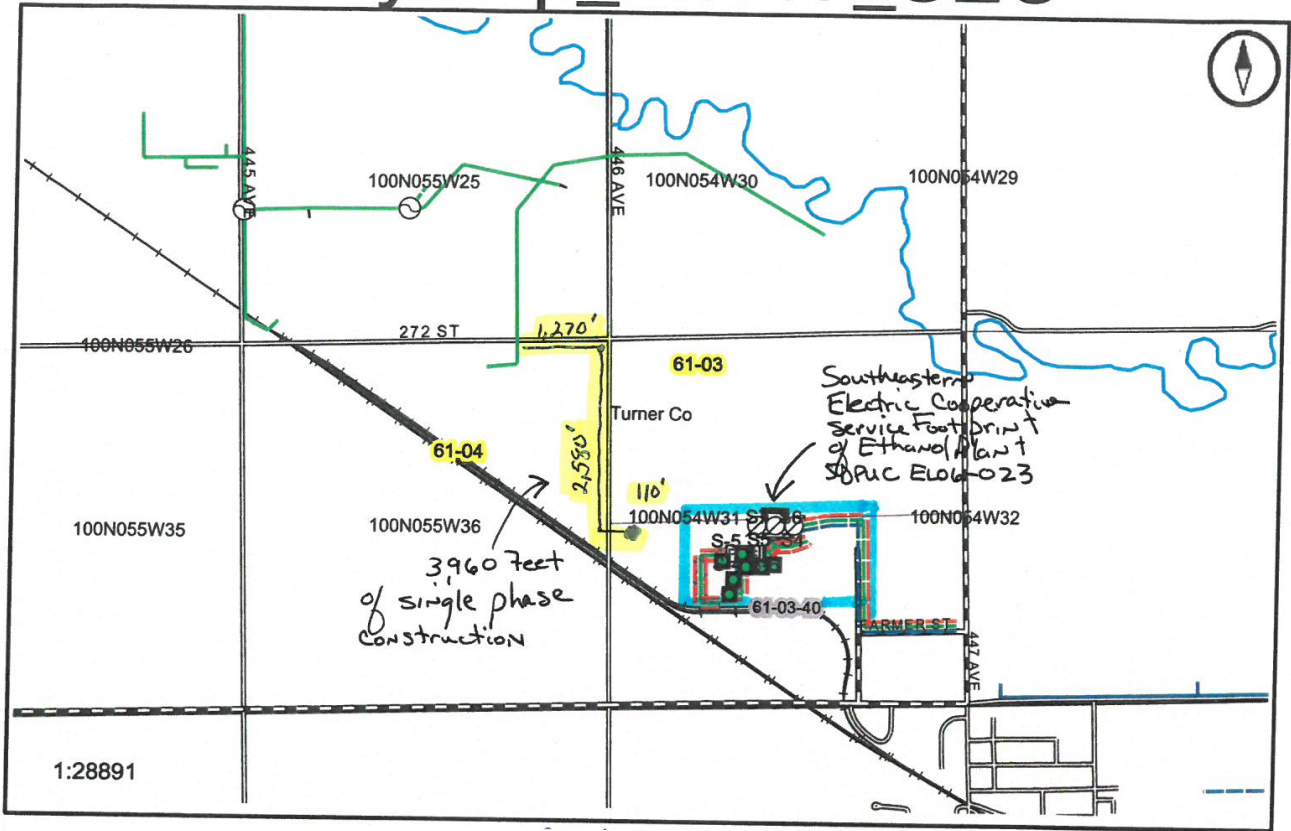


CarryMap_Mar17_SEC



SE Southeastern
Electric Cooperative, Inc.
MARION & ALCESTER, SD 1-800-333-2859

Attachment
"A"

- == City Streets-Concrete
- Trails-Asphalt
- Trails-Gravel
- 4.3 Airport
- 4.4 Railroad
- 4.5 County Line
- 4.6 County Limits
- 4.7 Developments
- 4.7.1 Auburn Hills
- 4.7.2 Beal Property
- 4.7.3 Bristol Court
- 4.7.4 Chasing Willows A...
- 4.7.5 Costello Addition Tea
- 4.7.6 Diamond Field Esta...
- 4.7.7 Emerald Valley
- 4.7.8 Galway Candlelight
- 4.7.9 Harrisburg High Sc...
- 4.7.10 Heavenly Meadows
- 4.7.11 Judee Estates
- 4.7.12 Lincoln Highlands
- 4.7.13 Maxwell
- 4.7.14 Ponderosa Park
- 4.7.15 Prairie Gardens
- 4.7.16 SFS Sub
- 4.7.17 SHills Vistas
- 4.7.18 Whispering Woods
- 4.7.19 Whisper Ridge
- 4.7.20 Bid Well Adams
- 4.7.21 Commerce Park
- 4.7.22 Country Acres
- 4.7.23 Gerald's Addition
- 4.7.24 Gloria Dei Church
- 4.7.25 Great Plains Ethanol
- 4.7.26 Greyhawk
- 4.7.27 Heart Hospital
- 4.7.28 KAV Addition
- 4.7.29 Millennium Ethanol
- 4.7.30 Newton Hills
- 4.7.31 Sonler
- 4.7.32 Southtown
- 4.7.33 Superior
- 4.7.34 USF_SFC
- 4.8 County Parcels
- 4.8.2 Union County Par...
- 4.8.3 Clay County Parc...
- 4.8.4 Irene Clay Count...
- 4.8.5 Hutchinson Count...
- 4.8.6 Lincoln County P...
- 4.8.7 McCook County...
- 4.8.8 Parkston City Par...
- 4.8.9 Turner County P...
- 4.8.10 Yankton County...
- 4.9 Section Line
- 4.10 Township Line
- 4.11 Lake
- 4.12 River
- 4.13 Creek
- 4.14 Subdivision

- OH-3PH
- UG
- UG-3PH
- A, true
- ABC, true
- 3.21 Primary_Underground
- = Rural Roads-Dirt
- = Rural Roads-Dirt
- = Rural Roads-Dirt