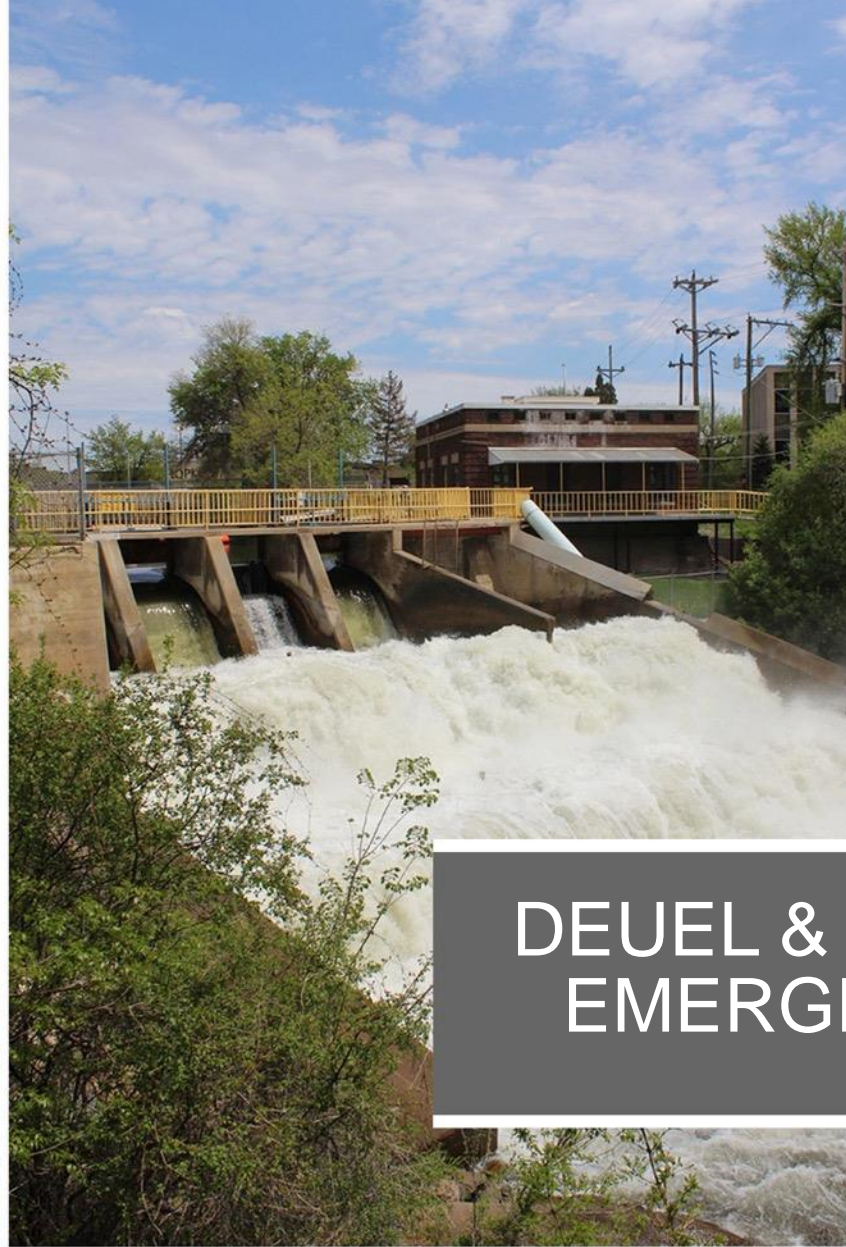


Appendix F: Documentation of Meeting with Emergency Response and Local Jurisdictions



DEUEL & BROOKINGS COUNTY EMERGENCY RESPONDERS



OUR VISION



Growth and success—for our company and the rural communities we serve.

We collaborate and prosper through responsible, resourceful action. We balance community, economic, and environmental commitments. **Always.**

OUR MISSION



To produce and deliver electricity as reliably, economically, and environmentally responsibly as possible to the balanced benefit of customers, shareholders, and employees and to improve the quality of life in the areas in which we do business

OUR COMMITMENT TO YOU

Astoria Station

Part of our commitment to low-cost, reliable, and increasingly clean energy



Astoria Station, in Deuel County, South Dakota, will help us continue to reliably and affordably serve our customers by providing energy when they need it—such as when our customers are using more energy than usual or when renewable generation conditions aren't ideal. In fact, once complete this simple-cycle natural gas combustion turbine will be able to quickly provide our customers with approximately 250 megawatts of capacity.

Our company will seek regulatory approvals, manage the construction process above, and operate the station. We expect the station to cost approximately \$165 million and to be on line in 2021.

Regional economic benefits

Tax benefits

Astoria Station will pay property tax totaling approximately \$3 million within the first five years of operation, then approximately \$1 million each subsequent year.

New jobs

During the 13-month construction period, we estimate that the project will create an average of 50 construction jobs, with a peak of 70 during the height of construction. This will equate to approximately \$30 million in construction labor costs. And, when complete, the station will require three to five full-time employees to operate it.

Infrastructure improvements

Infrastructure improvements needed for the station, such as the new electrical substation, could lead to additional commercial and industrial development in the area.

Natural gas enables renewable energy

By 2021 we project that more than 30 percent of the energy our customers use will come from renewables. But, because the sun doesn't always shine and the wind doesn't always blow, we need safe, reliable, and affordable dispatchable generation fuel sources—such as natural gas. Astoria Station will allow us to keep the lights on when we're unable to harness the sun or wind to generate energy.

About Otter Tail Power Company

Otter Tail Power Company is headquartered in Fergus Falls, Minnesota. With a balanced commitment to environmental, economic, and community stewardship, we provide electricity and energy services to more than a quarter million people in Minnesota, North Dakota, and South Dakota.

otpc.com/AstoriaStation



CONSTRUCTION SCHEDULE

2019

May 1 - May 15: Tree and brush clearing

June 1 - November 30:

- Civil work
- Rebuild 482nd Ave
- Foundation installation

July 1 - December 30: Erection of pre-engineered building

2020

February 1 - December 31: GWC construction of facility

2021

January 1 - July 31:

- Commissioning
- Start up
- Site restoration

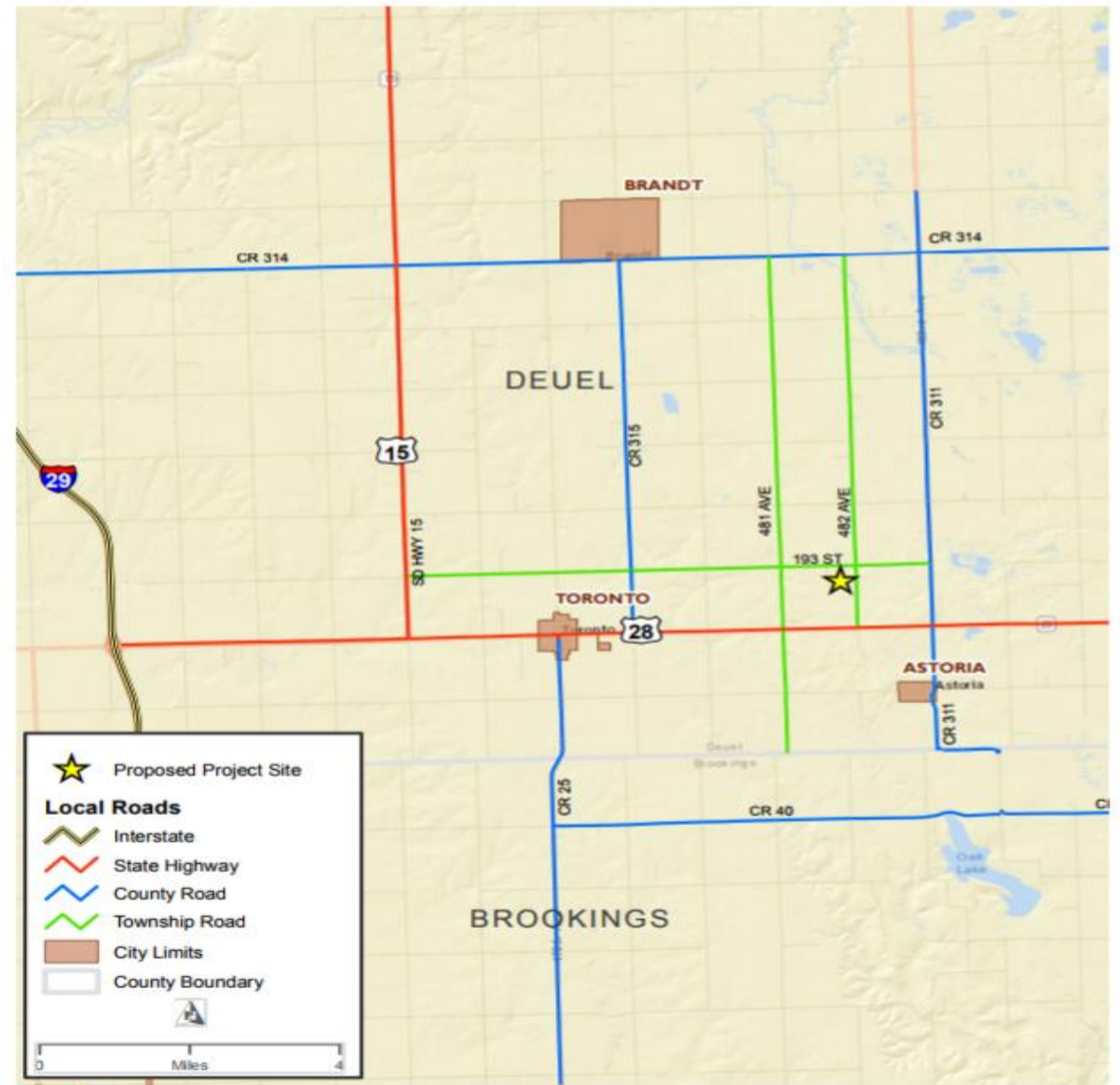


PROJECTED CONSTRUCTION WORKFORCE

Date	Number of Workers Onsite
Ground Breaking and Month 1	20
Month 2	30
Month 3	30
Month 4	40
Month 5	50
Month 6	60
Month 7	60
Month 8	70
Month 9	70
Month 10	70
Month 11	60
Month 12	40
Month 13	30

TRANSPORTATION

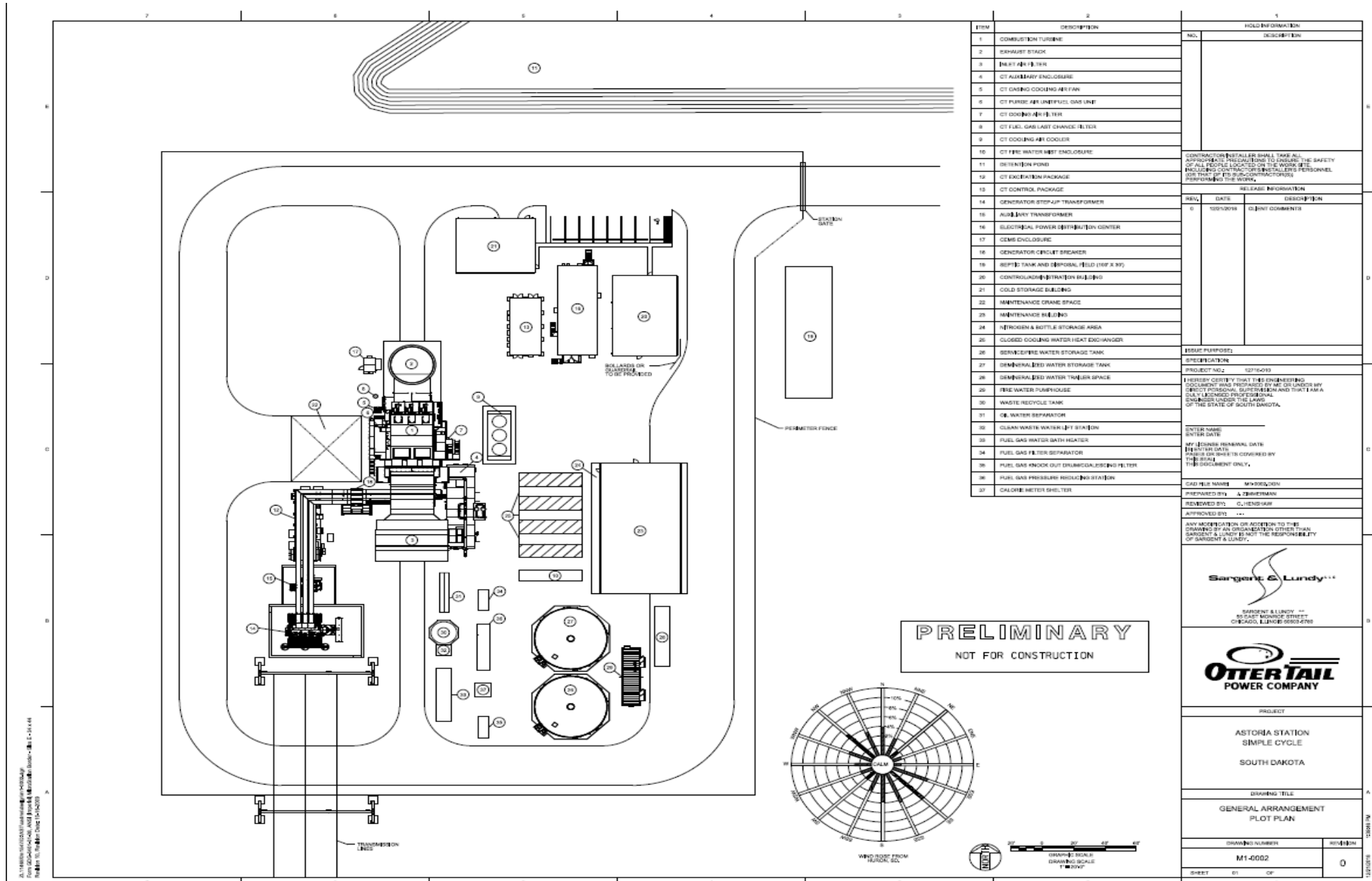
- Heavy haul route will likely be east along Hwy 28 from I29 to 482nd Ave.
- Road agreements and heavy haul permits will be reviewed with Township/County.
- Necessary roadway improvements will be made to 482nd Ave.
- May need to use alternate route during rebuild of 482nd Ave.



ALTERNATE ACCESS ROUTE

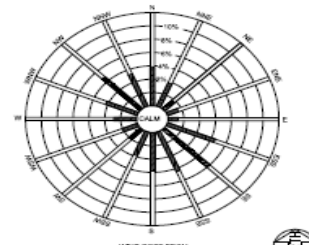


SITE LAYOUT



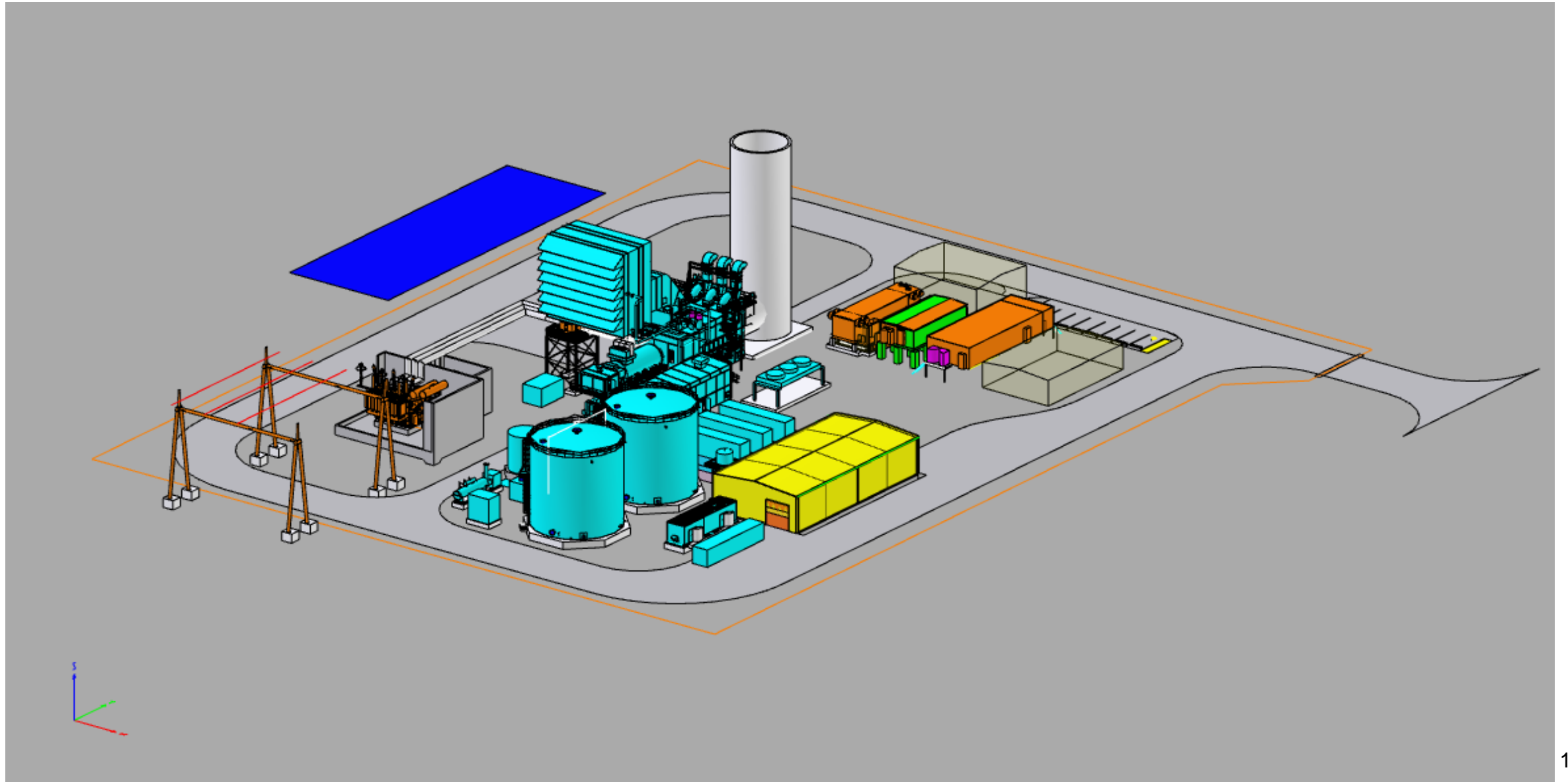
ITEM	DESCRIPTION	HOLD INFORMATION																		
1	COMBUSTION TURBINE	<table border="1"> <thead> <tr> <th>NO.</th> <th>DESCRIPTION</th> </tr> </thead> <tbody> <tr> <td> </td> <td> </td> </tr> <tr> <td> </td> <td> </td> </tr> <tr> <td> </td> <td> </td> </tr> <tr> <td> </td> <td> </td> </tr> <tr> <td> </td> <td> </td> </tr> <tr> <td> </td> <td> </td> </tr> <tr> <td> </td> <td> </td> </tr> <tr> <td> </td> <td> </td> </tr> </tbody> </table>	NO.	DESCRIPTION																
NO.	DESCRIPTION																			
2	EXHAUST STACK																			
3	EXHAUST AIR FAN																			
4	CT AUXILIARY ENCLOSURE																			
5	CT OILING COOLING AIR FAN																			
6	CT PURGE AIR LINE/FUEL GAS LINE																			
7	CT OILING AIR FAN																			
8	CT FUEL GAS LAST CHANGE FILTER																			
9	CT COOLING AIR COOLER																			
10	CT FIRE WATER PUMP ENCLOSURE	<p>CONTRACTOR/INSTALLER SHALL TAKE ALL NECESSARY PRECAUTIONS TO ENSURE THE SAFETY OF ALL PEOPLE LOCATED ON THE WORK SITE. INCLUDE CONTRACTOR/INSTALLER/ENGINEER PERSONNEL AND THAT OF THE SUB-CONTRACTORS PERFORMING THE WORK.</p> <table border="1"> <thead> <tr> <th>REV.</th> <th>DATE</th> <th>DESCRIPTION</th> </tr> </thead> <tbody> <tr> <td>0</td> <td>10/01/2018</td> <td>CLIENT COMMENTS</td> </tr> </tbody> </table> <p>RESULT PURPOSE:</p> <p>SPECIFICATIONS:</p> <p>PROJECT NO.: 10716009</p> <p>ENGINEER CERTIFY THAT THIS ENGINEERING DOCUMENT WAS PREPARED BY ME OR UNDER MY DIRECT PERSONAL SUPERVISION AND THAT I AM A FULLY LICENSED PROFESSIONAL ENGINEER UNDER THE LAWS OF THE STATE OF SOUTH DAKOTA.</p> <p>OWNER NAME: _____ OWNER DATE: _____</p> <p>MY LICENSE EXPIRES DATE: _____ MY EXPIRES DATE: _____ FUTURE DATES COVERED BY THIS SEAL: _____</p> <p>THIS DOCUMENT ONLY.</p> <p>OWNER NAME: _____ PREPARED BY: A. TRISTRAN REVIEWED BY: C. HENSEN APPROVED BY: _____</p> <p>ANY ADDITION OR DEVIATION TO THIS DRAWING BY AN ORGANIZATION OTHER THAN SARGENT & LUNDY IS NOT THE RESPONSIBILITY OF SARGENT & LUNDY.</p> <p>Sargent & Lundy</p> <p>SARGENT & LUNDY 55 EAST MONROE STREET CHICAGO, ILLINOIS 60601-4799</p> <p>OTTERTAIL POWER COMPANY</p> <p>PROJECT:</p> <p>ASTORIA STATION SIMPLE CYCLE SOUTH DAKOTA</p> <p>DRAWING TITLE:</p> <p>GENERAL ARRANGEMENT PLOT PLAN</p> <p>DRAWING NUMBER: M1-0002 REVISION: 0</p> <p>SHEET 01 OF 01</p>	REV.	DATE	DESCRIPTION	0	10/01/2018	CLIENT COMMENTS												
REV.	DATE		DESCRIPTION																	
0	10/01/2018		CLIENT COMMENTS																	
11	DEFLECTION POND																			
12	CT EXHAUST PACKAGE																			
13	CT CONTROL PACKAGE																			
14	GENERATOR STOP/UP TRANSFORMER																			
15	AUXILIARY TRANSFORMER																			
16	ELECTRICAL POWER DISTRIBUTION CENTER																			
17	CEMS ENCLOSURE																			
18	GENERATOR CIRCUIT BREAKER																			
19	SEPTIC TANK AND DISPOSAL FIELD (100' X 60')																			
20	CONTROL AND DISTRIBUTION BUILDING																			
21	COLD STORAGE BUILDING																			
22	MAINTENANCE CRANE SPACE																			
23	MAINTENANCE BUILDING																			
24	NITROGEN & BOTTLE STORAGE AREA																			
25	CLOSED COOLING WATER HEAT EXCHANGER																			
26	SEWAGE/EGG WATER STORAGE TANK																			
27	DEMINERALIZED WATER STORAGE TANK																			
28	DEMINERALIZED WATER TREATMENT SPACE																			
29	EGG WATER PUMPHOUSE																			
30	WASTE RECYCLE TANK																			
31	EGG WATER SEPARATOR																			
32	CLEAN WASTE WATER LIFT STATION																			
33	FUEL GAS WATER BATH HEATER																			
34	FUEL GAS FILTER SEPARATOR																			
35	FUEL GAS KNOCK OUT DRUM/CALDRON FILTER																			
36	FUEL GAS PRESSURE REGULATING STATION																			
37	CALORIE METER SHELTER																			

PRELIMINARY
NOT FOR CONSTRUCTION

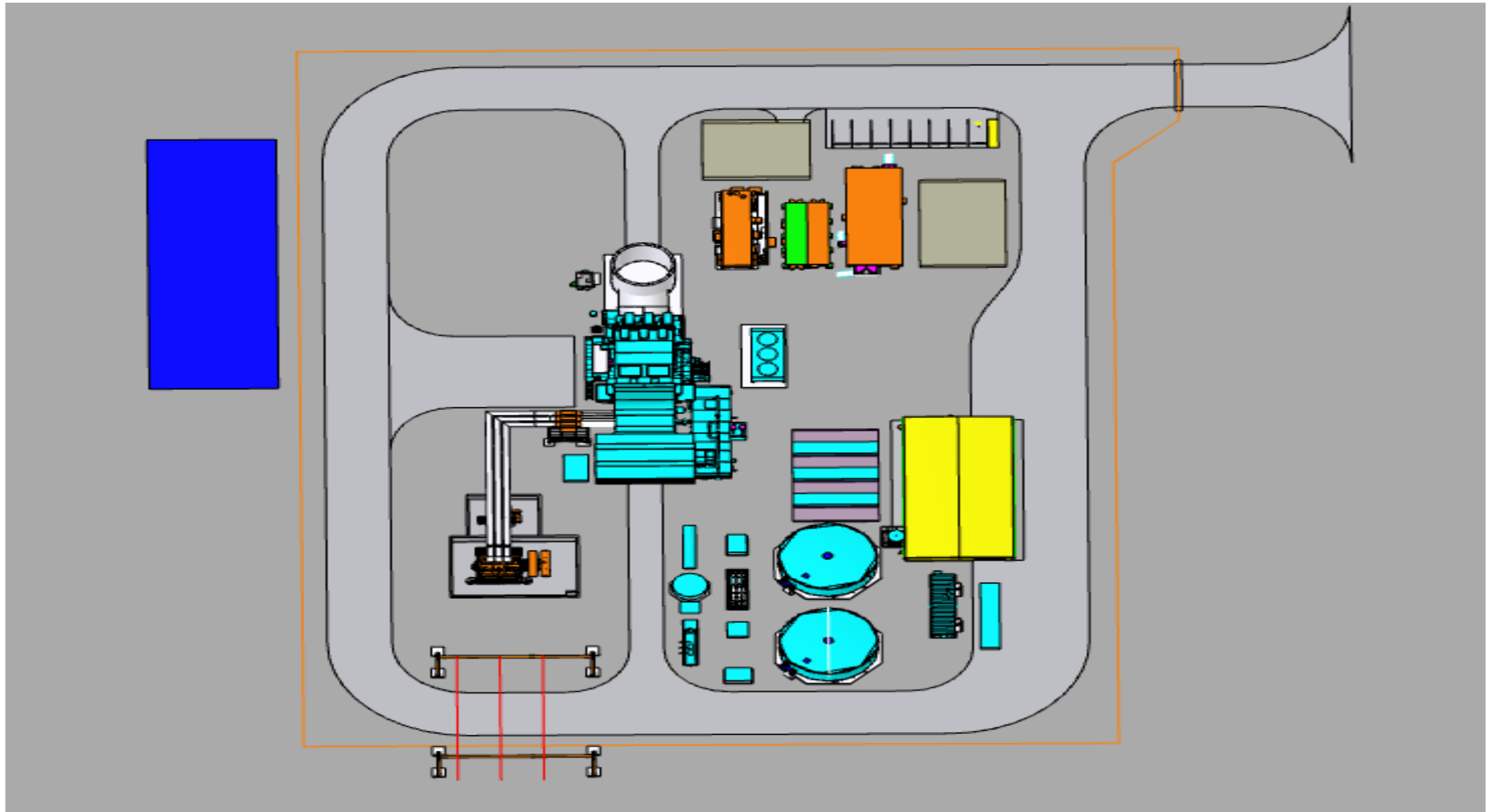


ALL DIMENSIONS UNLESS OTHERWISE SPECIFIED ARE IN FEET AND INCHES. DIMENSIONS IN PARENTHESES ARE IN METERS. DIMENSIONS IN METERS ARE APPROXIMATE. DATE: 10/01/2018. DRAWING NO.: M1-0002. SHEET NO.: 01 OF 01.

MODEL OF SITE



OVERHEAD VIEW



KEY ITEMS TO REMEMBER

- May need to use alternate route during Rebuild of 482nd Ave.
- We plan to have someone meet you at the entrance at 482nd Ave and escort you to the location.
- Site congestion REQUIRES slow travels through work site.
- Contacts:
 - Keith Kelly 605-880-3470
 - Jacob Robinson 651-900-3897
 - Kirk Phinney 605-924-0767

Questions?



Name	Dept	Phone	email
* Sheldon Crooks	Astoria (Housing)		
Jason Landmark	Astoria		
Sylvia Vich	Astoria		
DAVE BITEER	Brookings County S.O.		
Jose Christianson	Astoria		
Jacob Munro	Toronto		
Chad Gruntie	Toronto		
Mary Beth Silk	Sanford Clear Lake Hospital		
Laurie Smith	Deuel Co SO		
Madon Banderer	Toronto		

Astoria Station

Part of our commitment to low-cost, reliable, and increasingly clean energy



Astoria Station, in Deuel County, South Dakota, will help us continue to reliably and affordably serve our customers by providing energy when they need it—such as when our customers are using more energy than usual or when renewable generation conditions aren't ideal. In fact, once complete this simple-cycle natural gas combustion turbine will be able to quickly provide our customers with approximately 250 megawatts of capacity.

Our company will seek regulatory approvals, manage the construction process above, and operate the station. We expect the station to cost approximately \$165 million and to be on line in 2021.

Regional economic benefits

Tax benefits

Astoria Station will pay property tax totaling approximately \$3 million within the first five years of operation, then approximately \$1 million each subsequent year.

New jobs

During the 13-month construction period, we estimate that the project will create an average of 50 construction jobs, with a peak of 70 during the height of construction. This will equate to approximately \$30 million in construction labor costs. And, when complete, the station will require three to five full-time employees to operate it.

Infrastructure improvements

Infrastructure improvements needed for the station, such as the new electrical substation, could lead to additional commercial and industrial development in the area.

Natural gas enables renewable energy

By 2021 we project that more than 30 percent of the energy our customers use will come from renewables. But, because the sun doesn't always shine and the wind doesn't always blow, we need safe, reliable, and affordable dispatchable generation fuel sources—such as natural gas. Astoria Station will allow us to keep the lights on when we're unable to harness the sun or wind to generate energy.

About Otter Tail Power Company

Otter Tail Power Company is headquartered in Fergus Falls, Minnesota. With a balanced commitment to environmental, economic, and community stewardship, we provide electricity and energy services to more than a quarter million people in Minnesota, North Dakota, and South Dakota.

otpc.com/AstoriaStation

