

Appendix F:

Emergency Responder Presentation & Attendance Sheet

DEUEL AND BROOKINGS COUNTY

Emergency Responders



Saturday, October 31, 2020

ABOUT OTTER TAIL POWER COMPANY

Getting to know us

OUR VISION

**Growth and success—for our company
and the rural communities we serve.**

We collaborate and prosper through
responsible, resourceful action. We balance
community, economic, and environmental
commitments. **Always.**



OUR MISSION

To produce and deliver electricity as reliably, economically, and environmentally responsibly as possible to the balanced benefit of customers, shareholders, and employees and to improve the quality of life in the areas in which we do business



OUR VALUES



INTEGRITY

We conduct business responsibly and honestly.

SAFETY

We provide safe workplaces and require safe work practices.

CUSTOMER FOCUS

We provide reliable electricity and timely, courteous customer service.

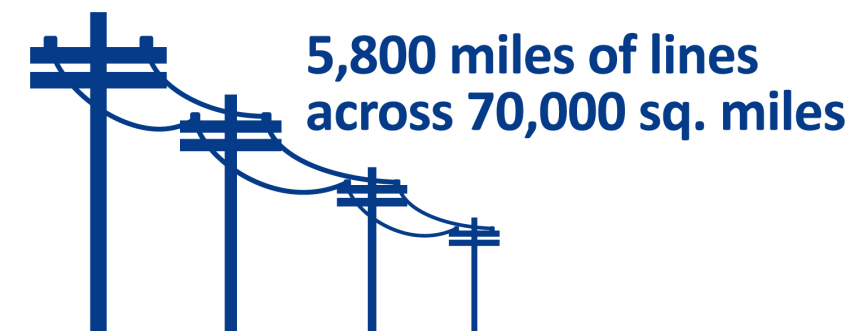
COMMUNITY

We care about the people and places we serve and improve the quality of life in the areas in which we do business.

RESOURCEFULNESS

We draw on the ingenuity and expertise of various resources to create strategic, balanced, practical plans.

WHO WE SERVE

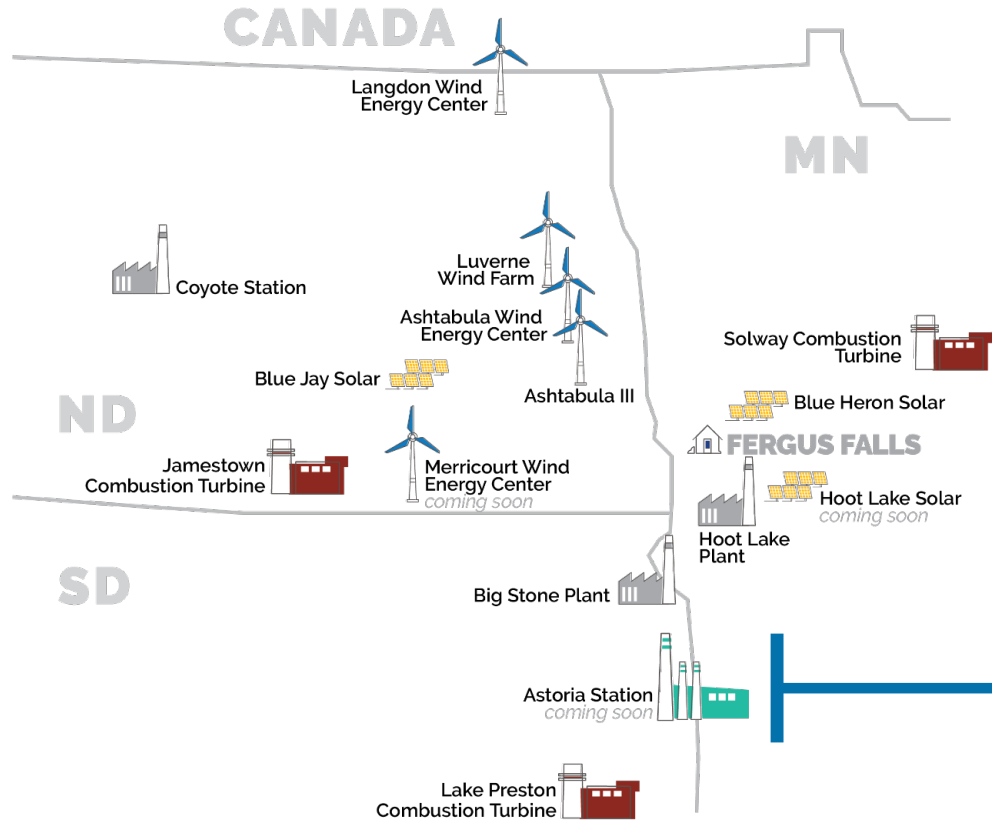


ABOUT ASTORIA STATION

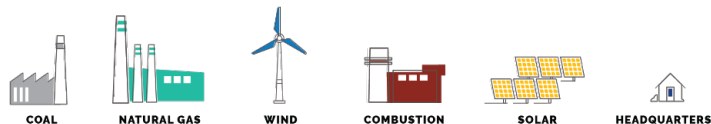
Part of our commitment to low-cost, reliable,
and increasingly clean energy



PROVIDING RELIABILITY

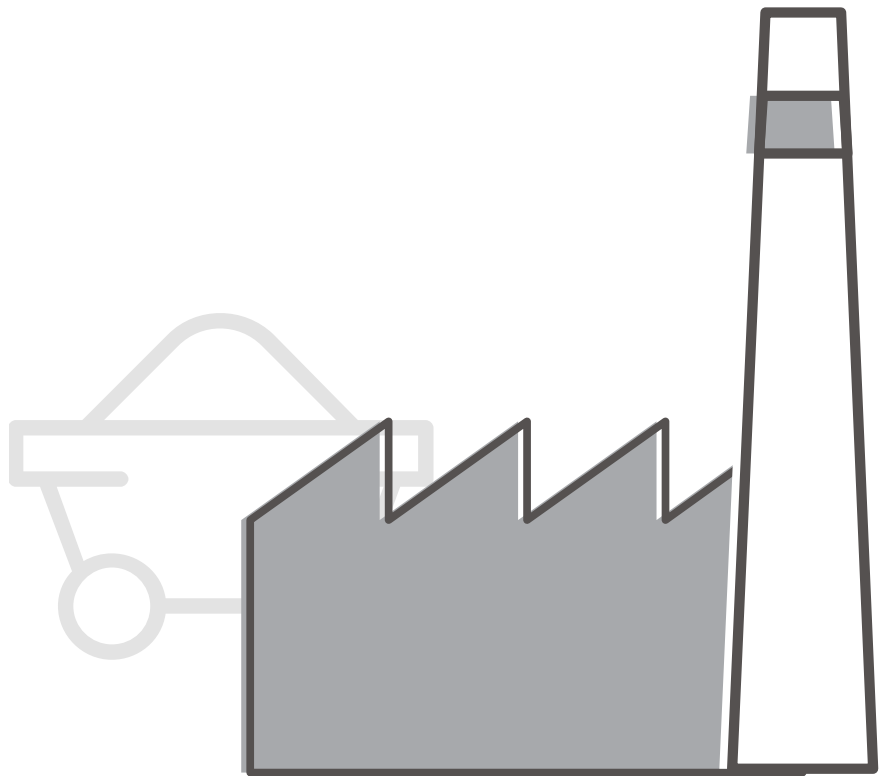


Astoria Station's natural gas generation will complement our wind resources by providing a reliable backstop when the wind isn't blowing.

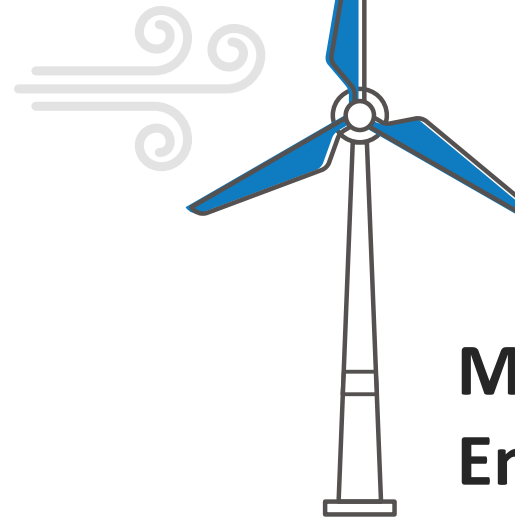
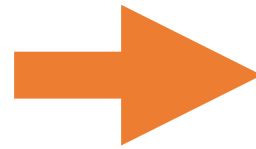




MEETING OUR CUSTOMERS' FUTURE ENERGY NEEDS

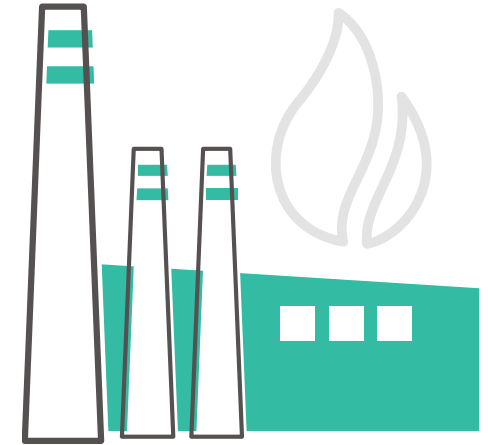


Hoot Lake Plant retirement





Merricourt Wind Energy Center


Astoria Station




How Astoria Station will **ADD VALUE:**

 Ramp up quickly to fill gaps in supply and demand

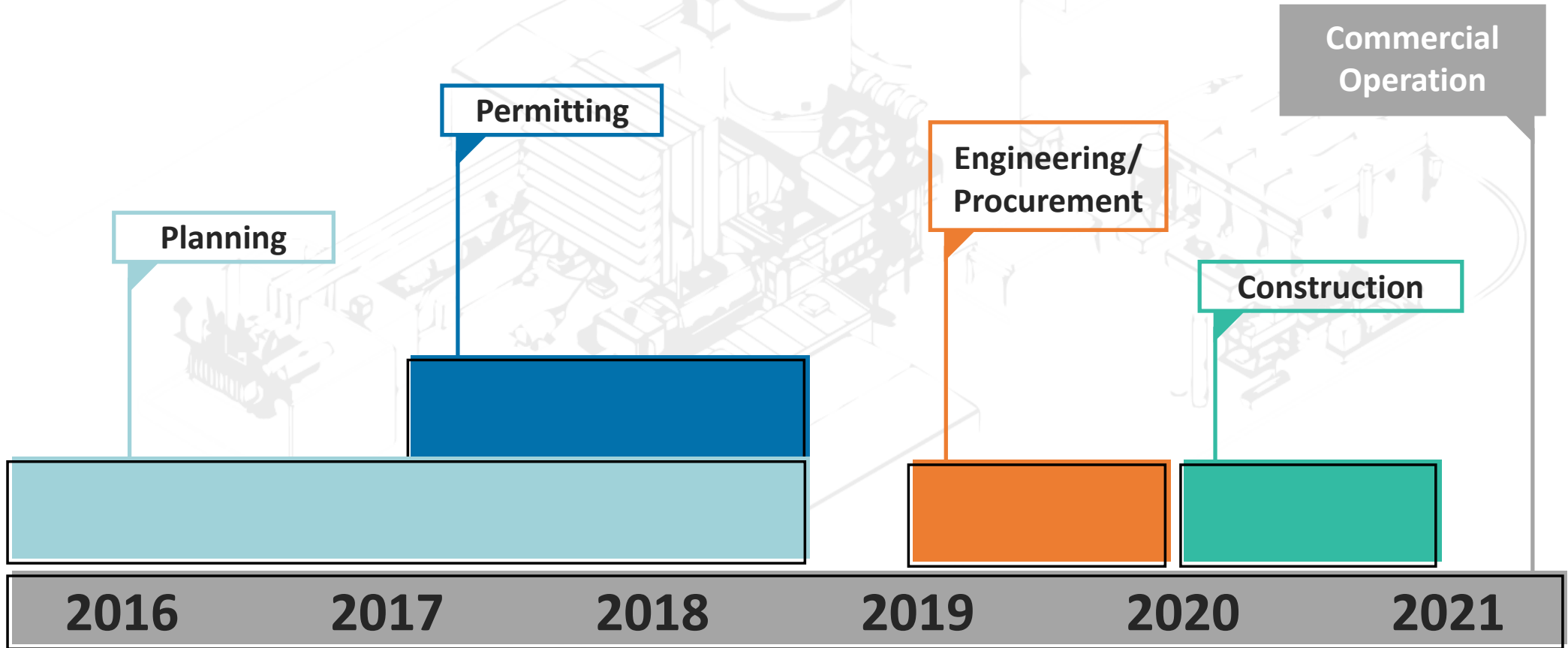
 Contribute **\$30M** to the local economy during construction

 Help fulfill our commitment to providing customers with **clean, low-cost, reliable energy**

 Provide **millions in property tax revenue** that will support local schools and government services



TIMELINE



CONSTRUCTION SCHEDULE

2019

- May 1 – May 15: Tree and brush clearing
- June 1 – November 30:
 - Civil work
 - Rebuild 482nd Ave.
 - Foundation installation
- July 1 – December 30: Erection of pre-engineered building

2020

February 1 – December 31:

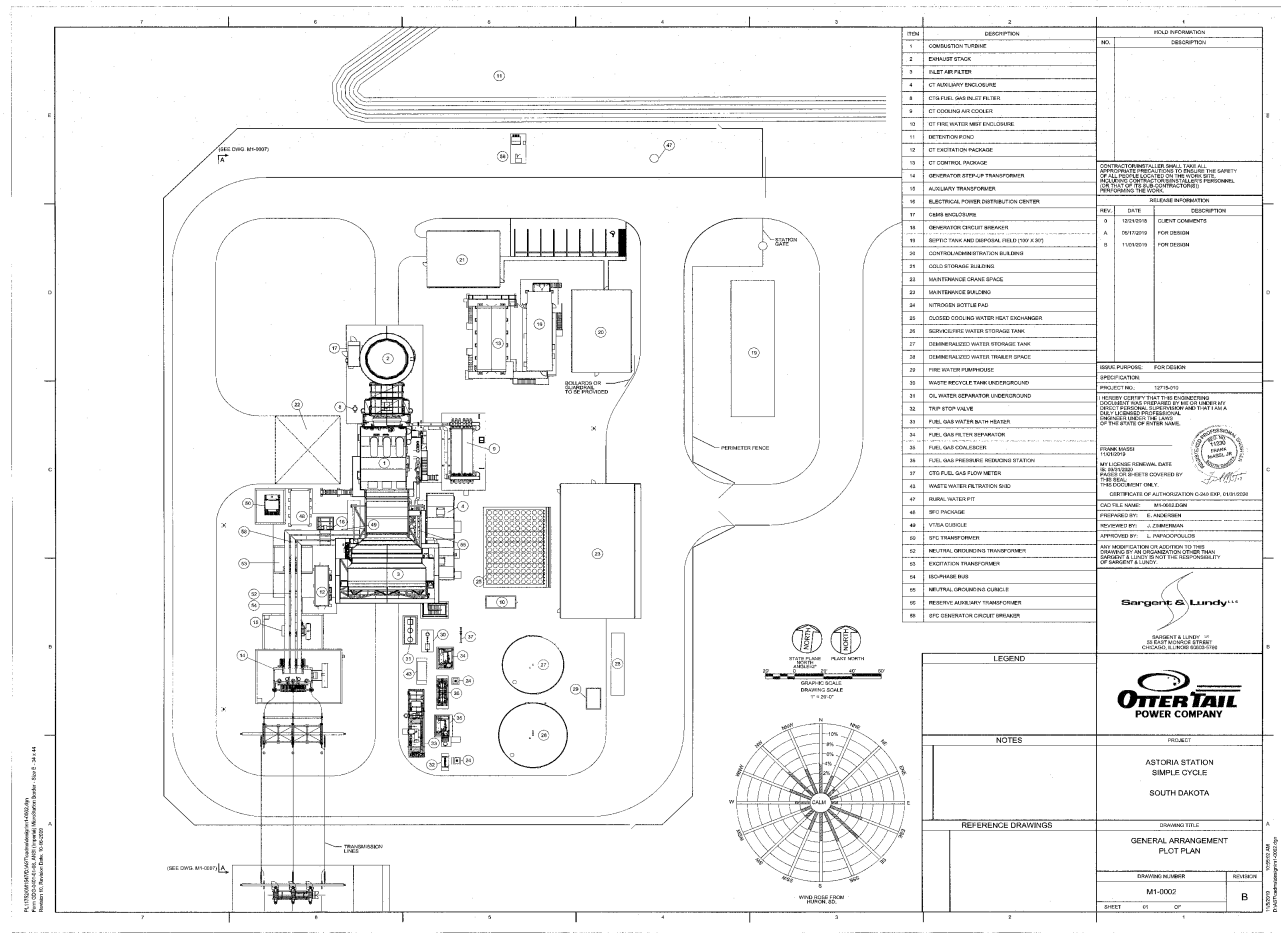
- GWC construction of facility
- Commissioning
- Start up

2021

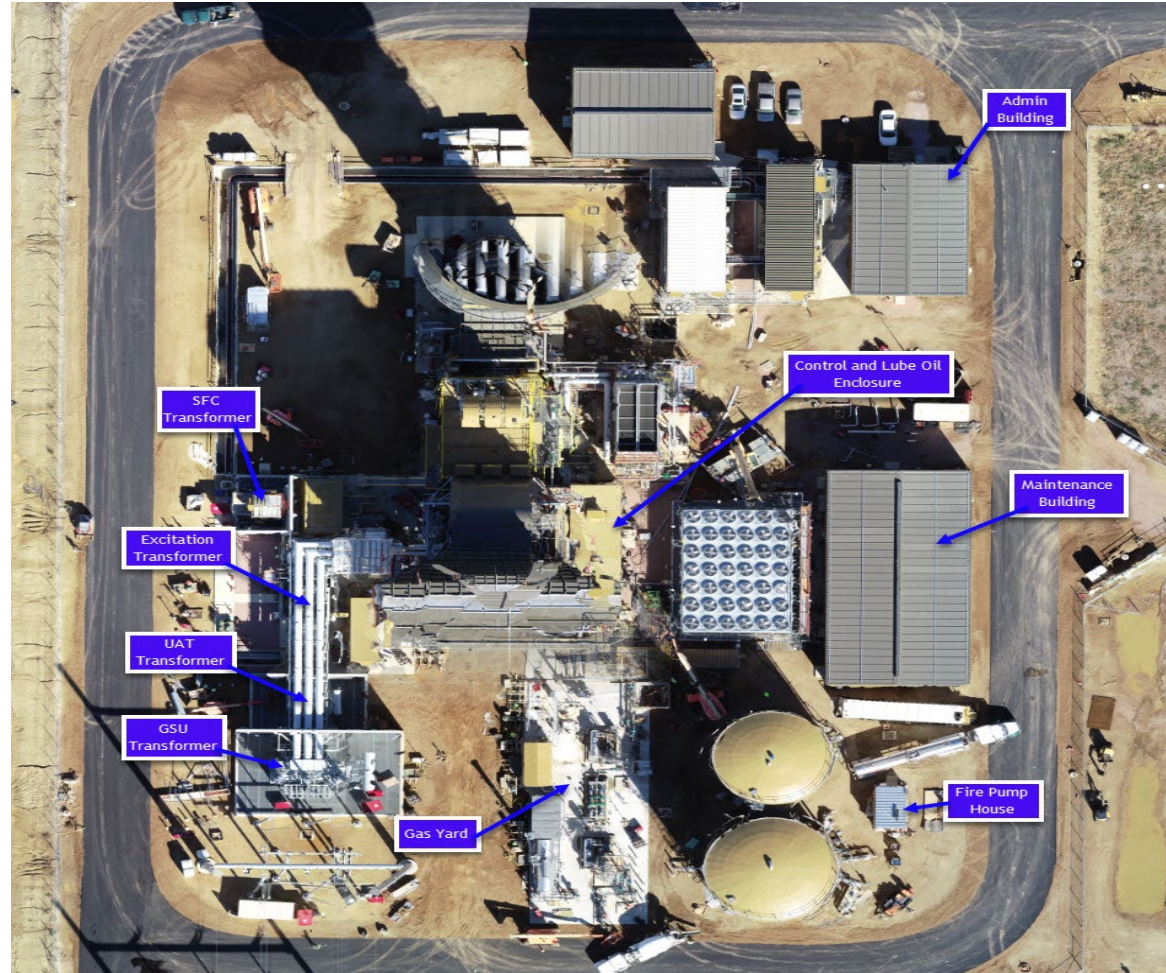
January 1 – July 31: Site restoration



SITE LAYOUT



VIEW FROM ABOVE



SCENARIOS THAT COULD BE ENCOUNTERED

Possible scenarios Emergency Responders may encounter at Astoria Station:

- Fire
- High-angle rescue
- Confined-space rescue
- Natural gas leaks

FIREFIGHTING INFORMATION

Diesel fire pump

- 1,000 gpm @130 lbs.

Jockey pump

- 25 gpm @ 135 lbs.

Hose connections

- Admin Building: north side has **one** 2 ½” hose connection
- Maintenance Building: southeast corner has **two** 2 ½” connections
- Fire Pump House: west side has **four** 2 ½” hose connections

Fire hydrants

- 1 hydrant between the Admin Building and the Maintenance Building
- 1 hydrant on the southwest corner of the site
- 1 hydrant west of the SFC Transformer

FIREFIGHTING INFORMATION (CONTINUED)

Sprinkler systems

- Admin Building
 - Designed for outside hose flow 100 gpm
 - Overhead sprinkler flow 210 gpm
 - 10 overhead sprinkler heads
- Maintenance Building
 - Designed for outside hose flow 500 gpm
 - Overhead sprinkler flow 746 gpm
 - 24 overhead sprinkler heads

CT fire mist system

- 4 zones
 - Zone 1: GT enclosure
 - Zone 2: Auxiliary enclosure
 - Zone 3: Turning gear enclosure
 - Zone 4: Generator enclosure
- A fire department connection is located on the northwest corner of the skid.

HOSE CONNECTIONS



Pump House



Southeast corner of
Maintenance Building



North side of Admin
Building



Fire hydrants

FIRE HAZARDS



Lube oil reservoirs



Gas Yard
(natural gas leak)

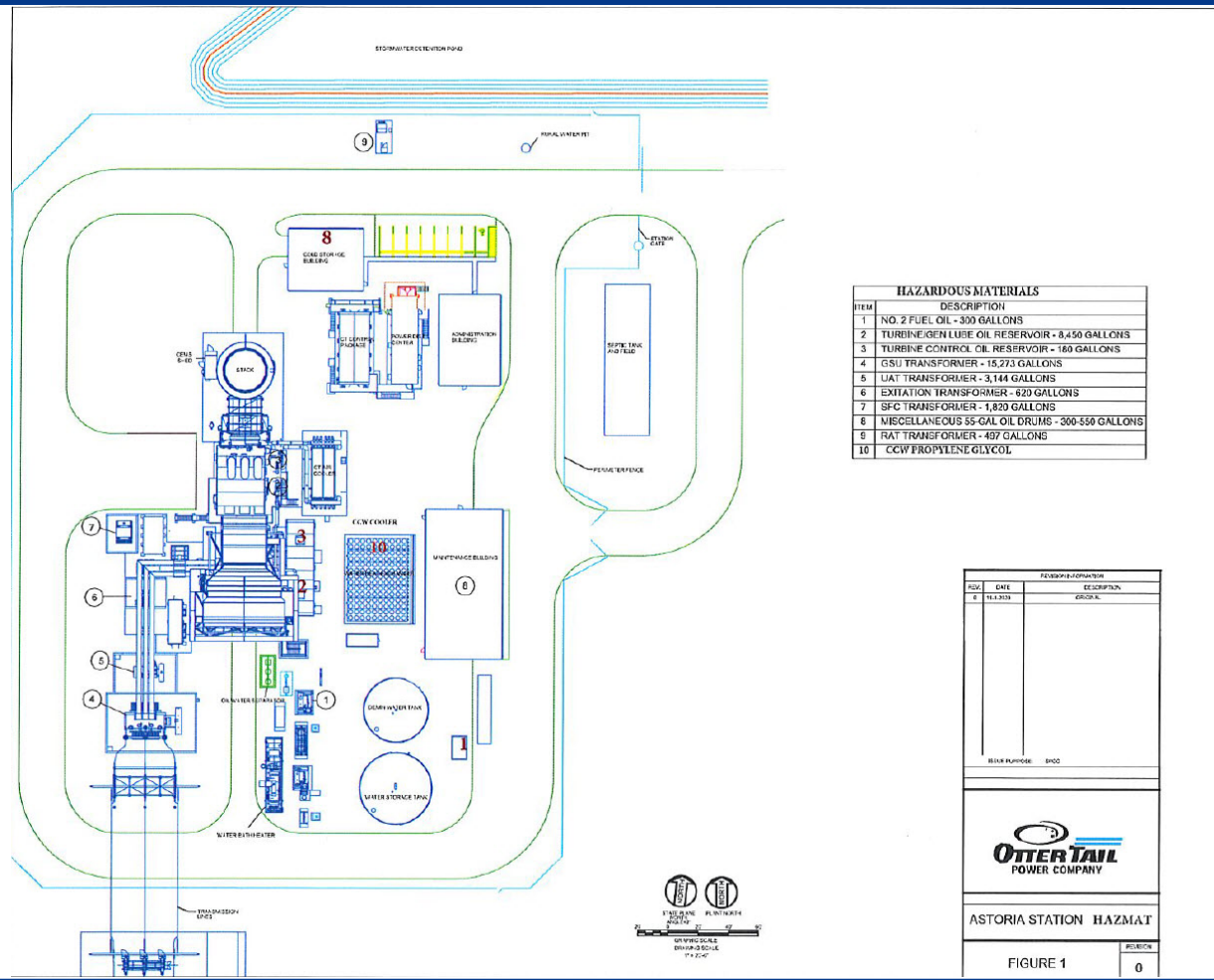


Air inlet filter

EQUIPMENT CONTAINING OIL

| Tank or Equipment | Volume (gallons) | Contents | Construction | Secondary Containment |
|-------------------|------------------|--------------------------------|--------------------------|-------------------------------|
| 1 | 300 | No. 2 Fuel Oil | Steel Tank | Dual Wall with leak detection |
| 2 | 8450 | Turbine/Gen Lube Oil Reservoir | Steel Oil Tank | Concrete Containment Dike |
| 3 | 180 | Turbine Control Oil Reservoir | Stainless Steel Oil Tank | Concrete Containment Dike |
| 4 | 15273 | GSU Transformer | Steel Transformer | Concrete Containment Dike |
| 5 | 3144 | UAT Transformer | Steel Transformer | Concrete Containment Dike |
| 6 | 620 | Excitation Transformer | Steel Transformer | Concrete Containment Dike |
| 7 | 1820 (6000kg) | SFC Transformer | Steel Transformer | Concrete Containment Dike |
| 8 | 300-550 | Misc. Oil Drums | Steel Drum | Spill Containment Pallets |
| 9 | 497 | RAT Transformer | Padmount Transformer | Stormwater Collection Pond |

LOCATOR



| HAZARDOUS MATERIALS | |
|---------------------|--|
| ITEM | DESCRIPTION |
| 1 | NO. 2 FUEL OIL - 300 GALLONS |
| 2 | TURBINE/GEN LUBE OIL RESERVOIR - 8,450 GALLONS |
| 3 | TURBINE CONTROL OIL RESERVOIR - 180 GALLONS |
| 4 | GSU TRANSFORMER - 15,275 GALLONS |
| 5 | LAT TRANSFORMER - 3,144 GALLONS |
| 6 | EXITATION TRANSFORMER - 620 GALLONS |
| 7 | SFC TRANSFORMER - 1,820 GALLONS |
| 8 | MISCELLANEOUS 55-GAL OIL DRUMS - 200-550 GALLONS |
| 9 | RAT TRANSFORMER - 497 GALLONS |
| 10 | CCW PROPYLENE GLYCOL |

| REVISIONS/CHANGES | | |
|-------------------|------------|-------------|
| REV. | DATE | DESCRIPTION |
| 0 | 01-19-2018 | ISSUED |

ASTORIA STATION HAZMAT
 FIGURE 1 REVISED 0

HIGH-ANGLE RESCUE

Air inlet filter, stack, and top-of-turbine enclosure



CONFINED SPACES

Water tanks, duct work, oily wastewater separator and tank



911 CALL OUT PROCEDURES

Manned

- If manned at the time of an alarm, CT techs will determine if a 911 call is needed.
- If manned, CT techs will meet units at the gate to direct to fire.

Unmanned

- There will be two types of alarms sent to our System Operations Department in Fergus Falls, MN.
 - **First level: Fire system trouble** will trigger to call a CT tech out to the site.
 - **Second level: Fire alarm** will trigger a Power System Operator to call 911 for dispatch of Fire Departments.
 - A call to a CT tech also will be placed.

KEY POINTS TO REMEMBER

- Astoria Station will be manned **5 days a week, 8 hours a day** (once operational).
- Site congestion requires **slow travel** throughout the work site.
- Contact information
 - During construction
 - **Keith Kelly:** 605-880-3470
 - **Kirk Phinney:** 605-924-0767
 - During normal operation
 - **Lance Koistinen:** 605-881-3160
 - **Luke Knutson:** 218-531-3449

QUESTIONS?



otpc.com
otpsustainability.com