

Exhibit 19

No. 16

5-7) Please refer to NorthWestern's response to Staff Data Request 1-20.

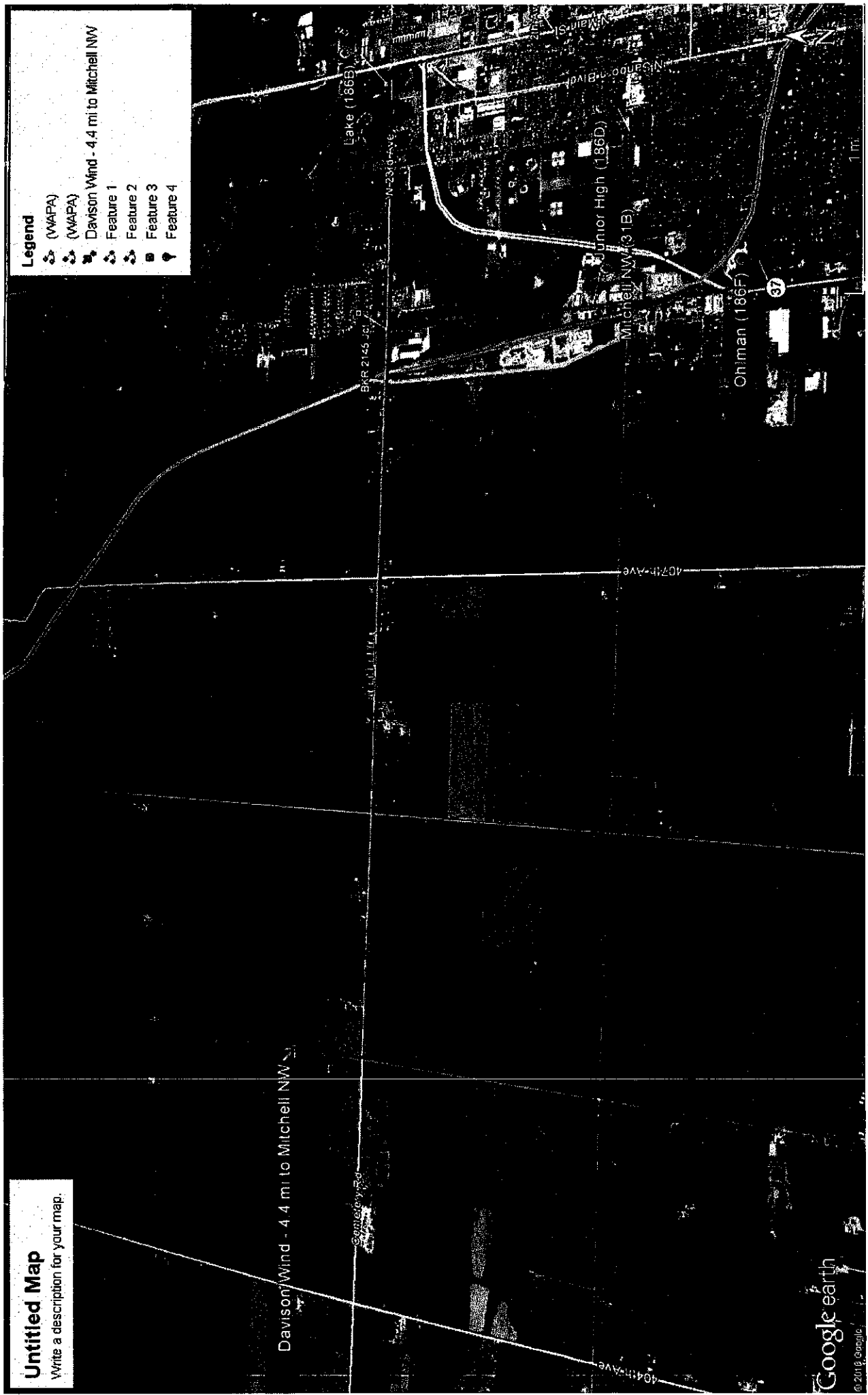
- b) For each of the three proposed network interconnections, please explain any and all system benefits, including reliability.

Original Response of Response of January 3, 2016:

- b) Response - There are no system benefits resulting from any of the three interconnection request

Untitled Map
Write a description for your map.

- Legend**
- (WAPA)
 - (WAPA)
 - Davison Wind - 4.4 mi to Mitchell NW
 - Feature 1
 - Feature 2
 - Feature 3
 - Feature 4



Davison Wind - 4.4 mi to Mitchell NW

Lake (186B)

Junior High (186D)

Mitchell NW (31B)

Oniman (186F)

407th Ave

N 2310 Ave

BRR 2145

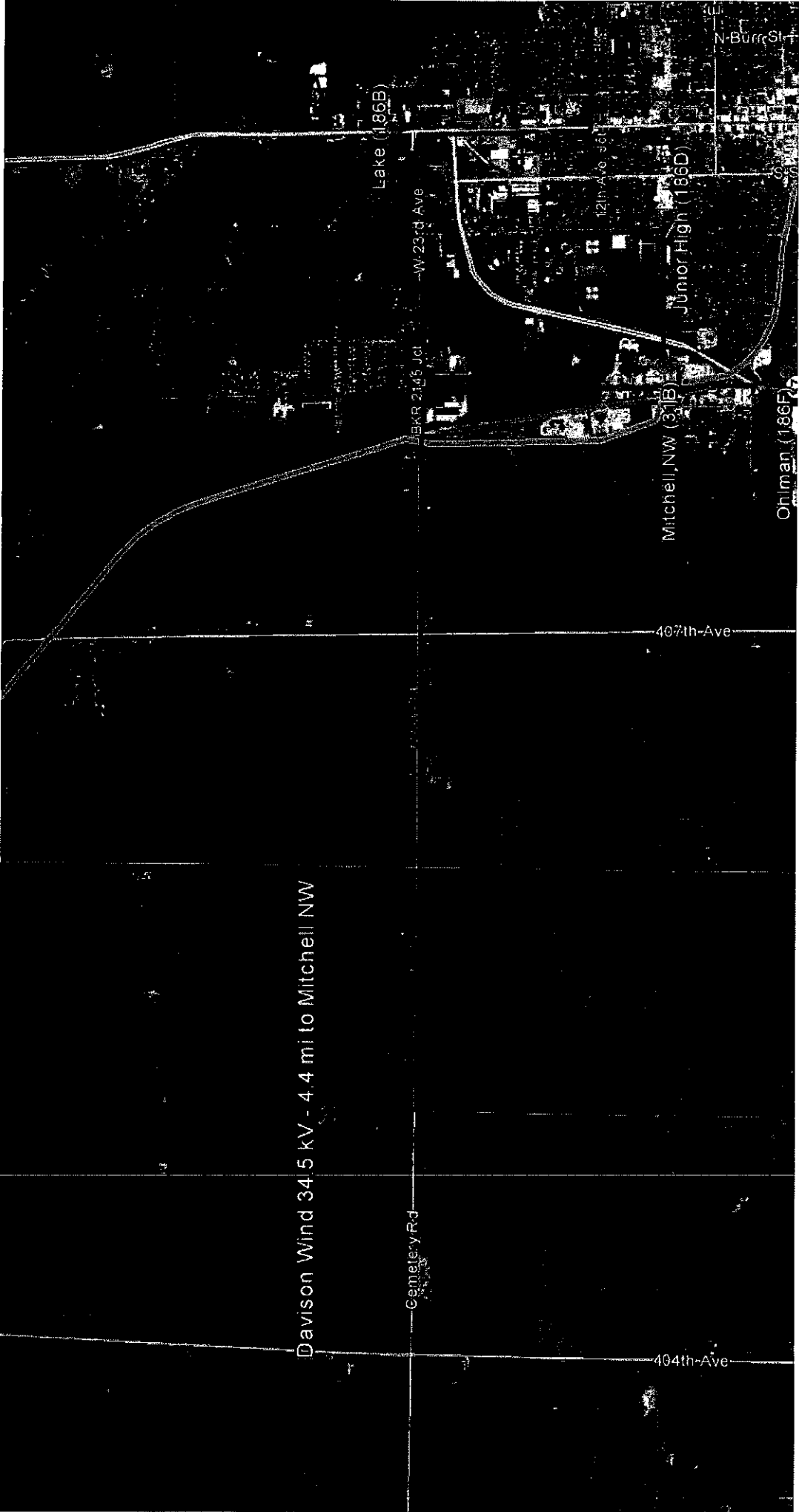
404th Ave

37

11th

Google earth

© 2016 Google



Davison Wind 34.5 kV - 4.4 mi to Mitchell NW

Lake (186B)

Cemetery Rd

BKR 2145 Jct

W 23rd Ave

407th Ave

404th Ave

Mitchell NW (31B)

Junior High (186D)

Ohlman (186F)

N Burr St