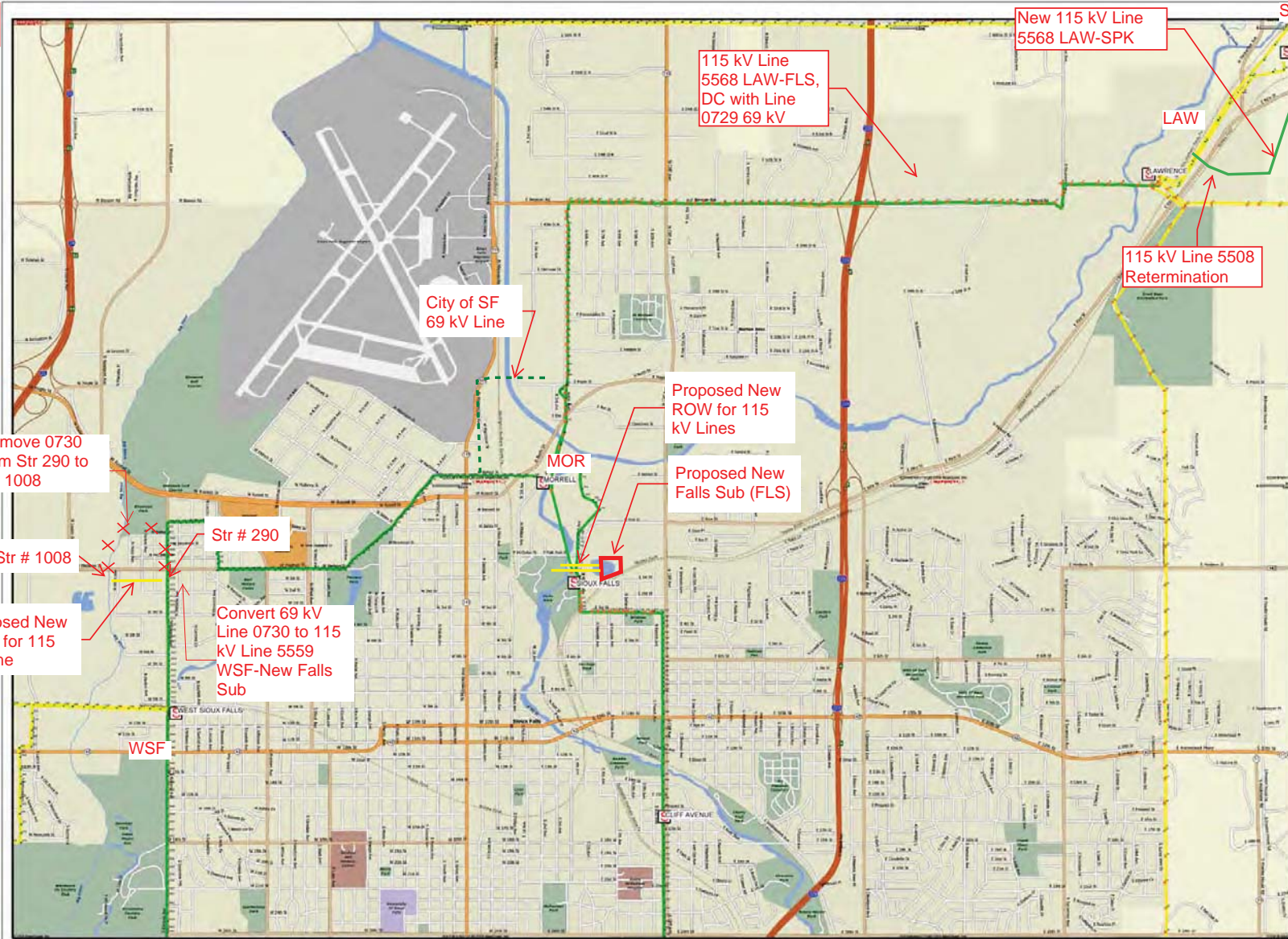


7.



Scale: 1" = 1000'

5508 LAW-FLS, 115 kV,
 959.6 kcmil 26/7 ACSS
 Conductors
 0729 LAW-MOR, 69 kV
 959.6 kcmil 26/7 ACSS
 Conductors
 5559 WSF-FLS, 115 kV,
 959.6 kcmil 26/7 ACSS
 Conductors

Ad Hoc Map

THIS MAP/DOCUMENT IS A TOOL TO ASSIST EMPLOYEES IN THE PERFORMANCE OF THEIR JOBS. YOUR PERSONAL SAFETY IS PROVIDED FOR BY USING SAFETY PRACTICES, PROCEDURES, AND EQUIPMENT AS DESCRIBED IN THE SAFETY TRAINING PROGRAMS, MANUALS AND SPARS.

By: gtcj/08
 Date: 01/14/2011

CONFIDENTIAL. DO NOT COPY OR DISTRIBUTE TO OTHERS WITHOUT EXPRESS WRITTEN CONSENT FROM XCEL ENERGY.

