

**Black Hills Power
South Dakota Surface Water**

<p>Hydrography</p> <ul style="list-style-type: none"> — Perennial Stream - - - Intermittent Stream · · · · · Ephemeral Stream ● Springs <p>Transportation</p> <ul style="list-style-type: none"> Public Road Railroad <p>Administrative Boundaries</p> <ul style="list-style-type: none"> County Boundary 	<p>Project Components</p> <ul style="list-style-type: none"> — Proposed Project Centerline One mile Buffer of Centerline <p>Jurisdiction</p> <ul style="list-style-type: none"> Black Hills National Forest Private
---	---

Figure 4 - Surface Water
230 kV Transmission Project

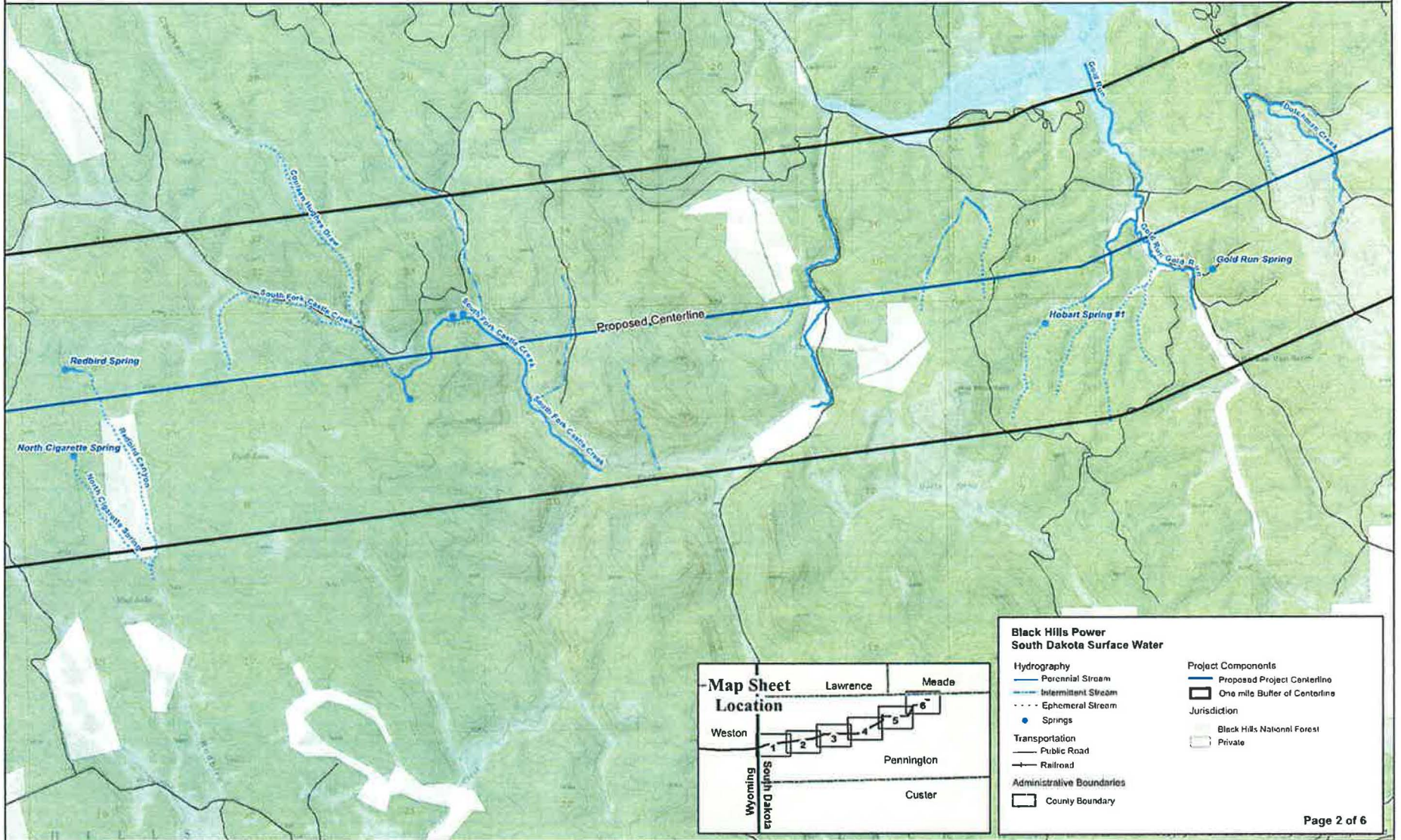


Figure 4 - Surface Water
230 kV Transmission Project

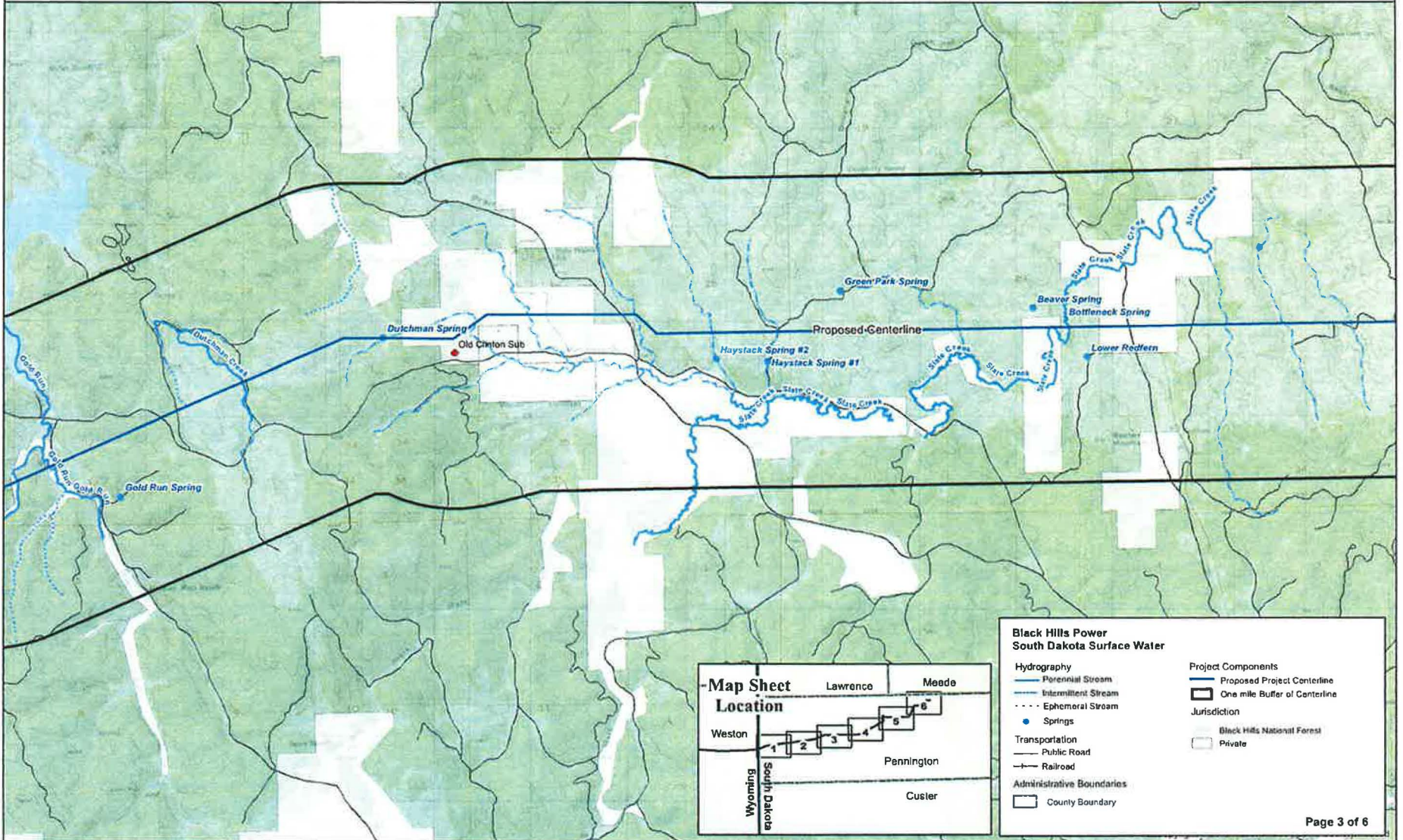


Figure 4 - Surface Water
230 kV Transmission Project

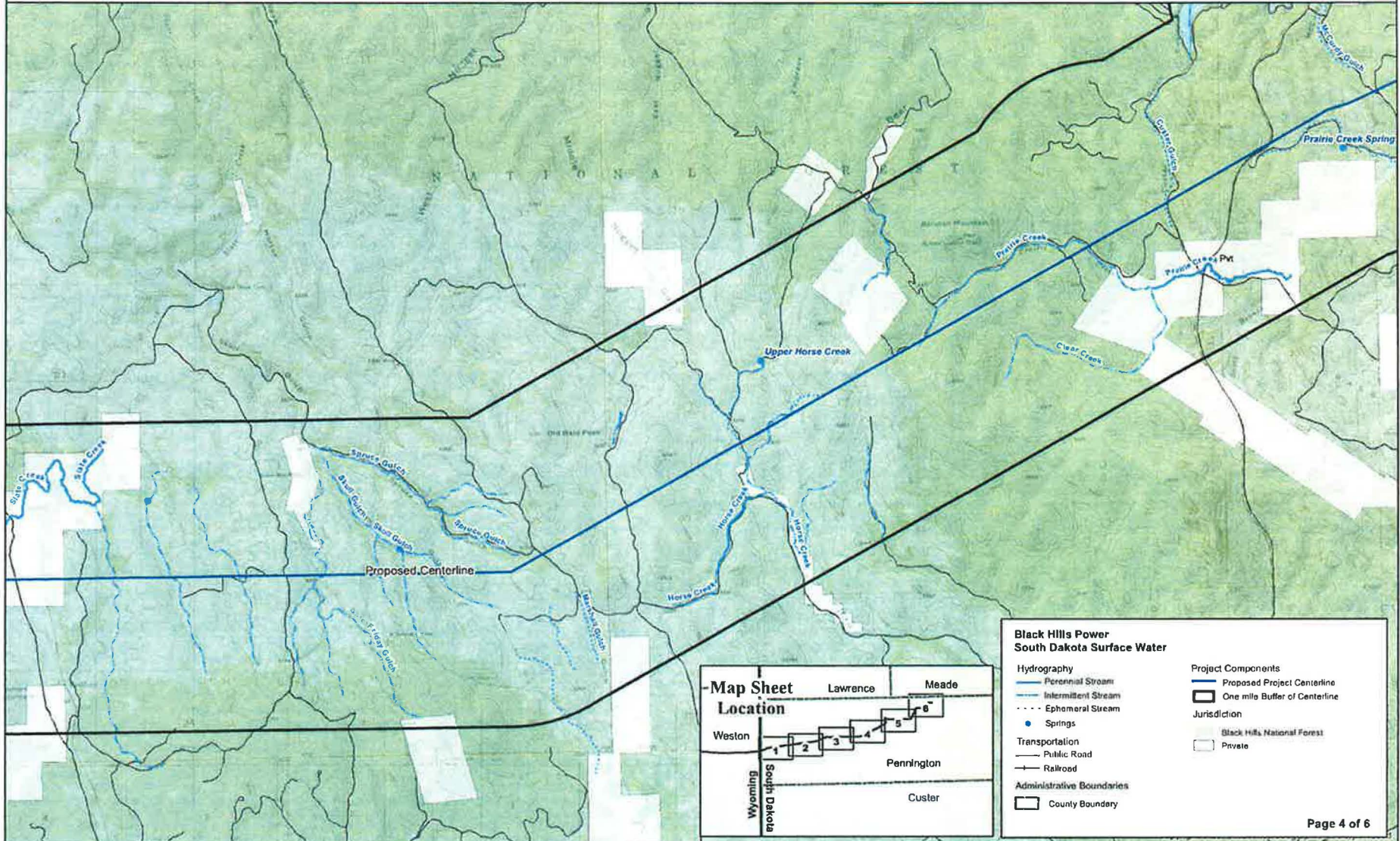


Figure 4 - Surface Water
230 kV Transmission Project

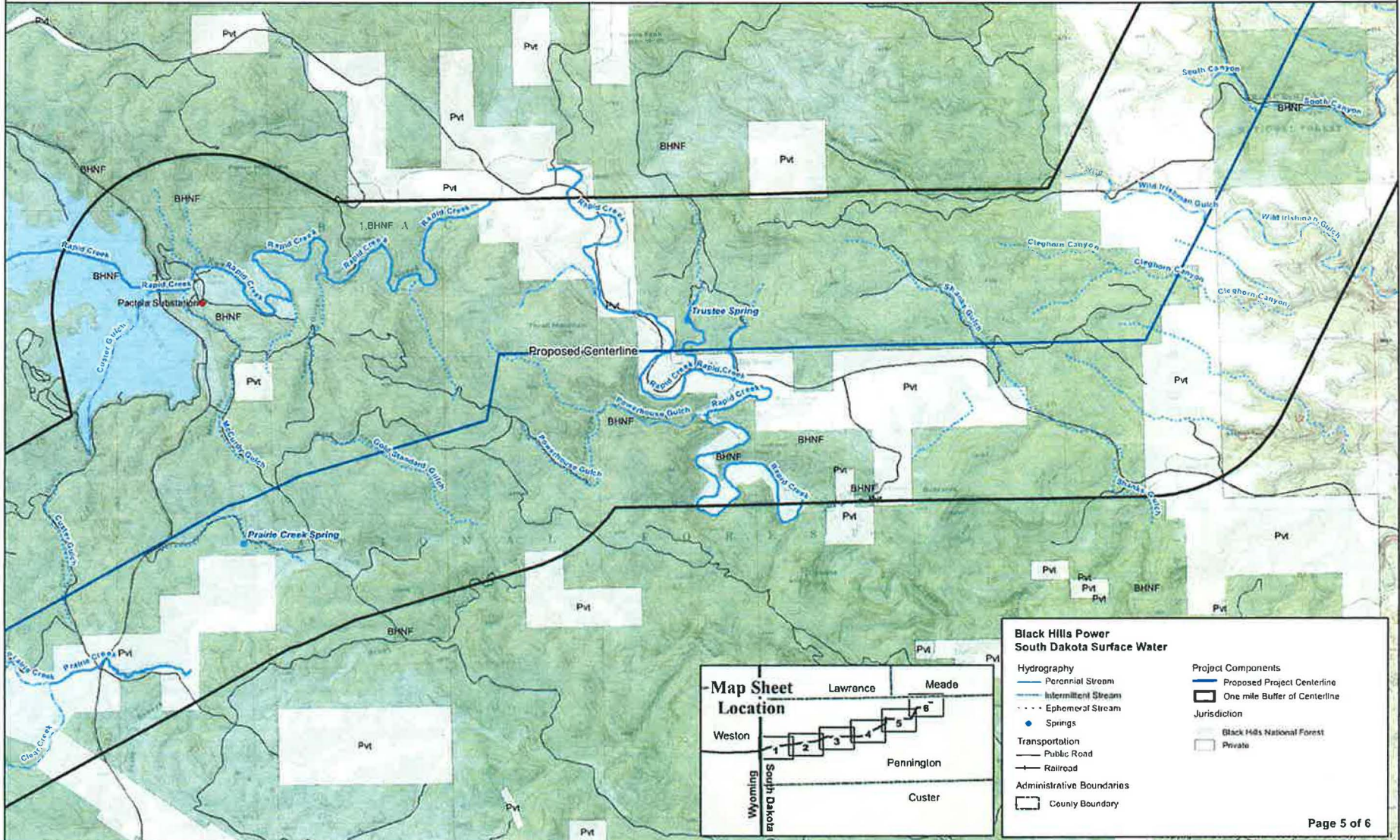


Figure 4 - Surface Water
230 kV Transmission Project

