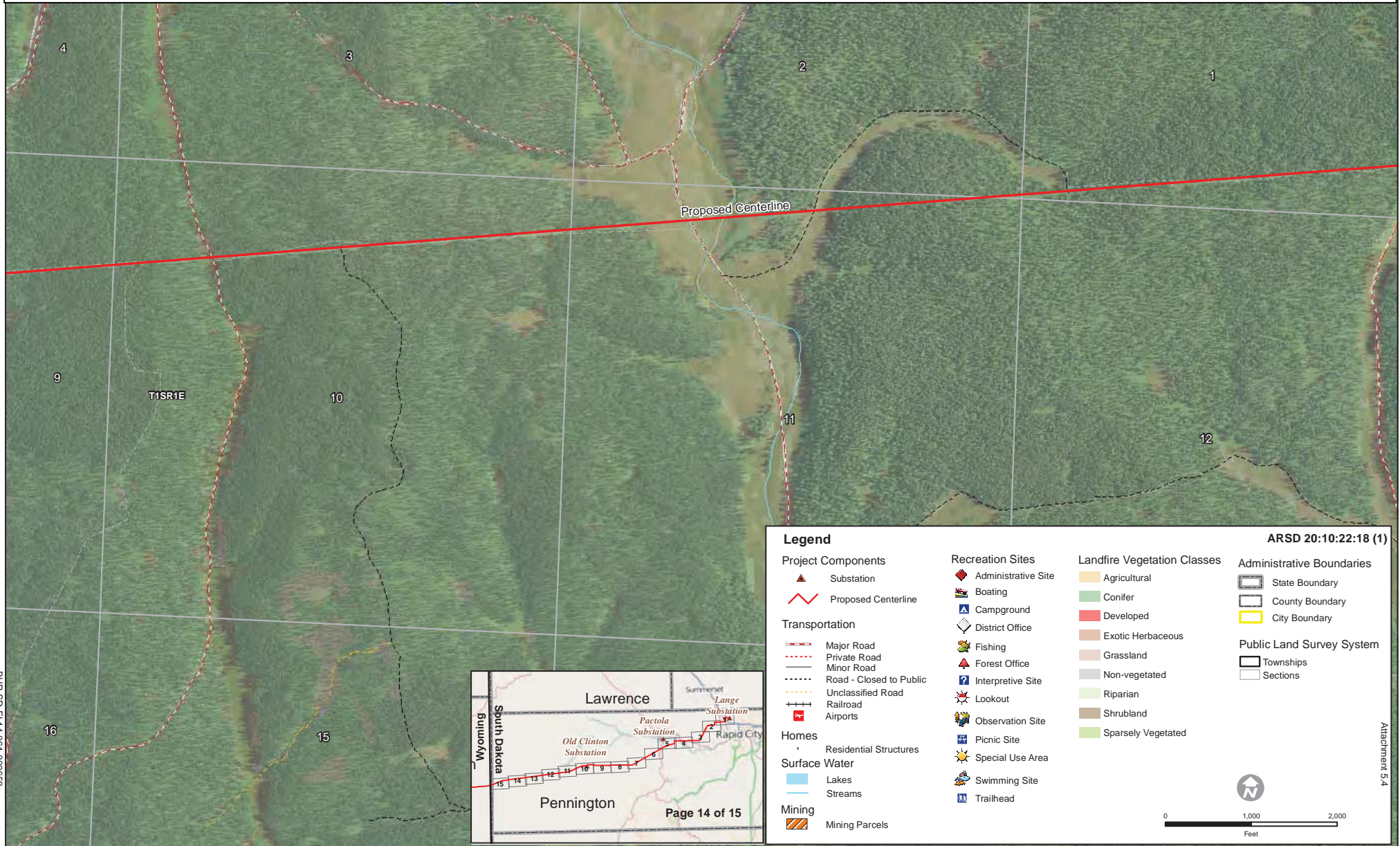
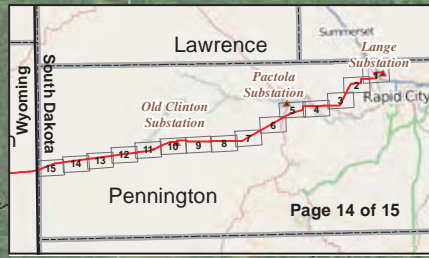


# Figure 8 - Existing Land Use 230 kV Transmission Project



**Legend** ARSD 20:10:22:18 (1)

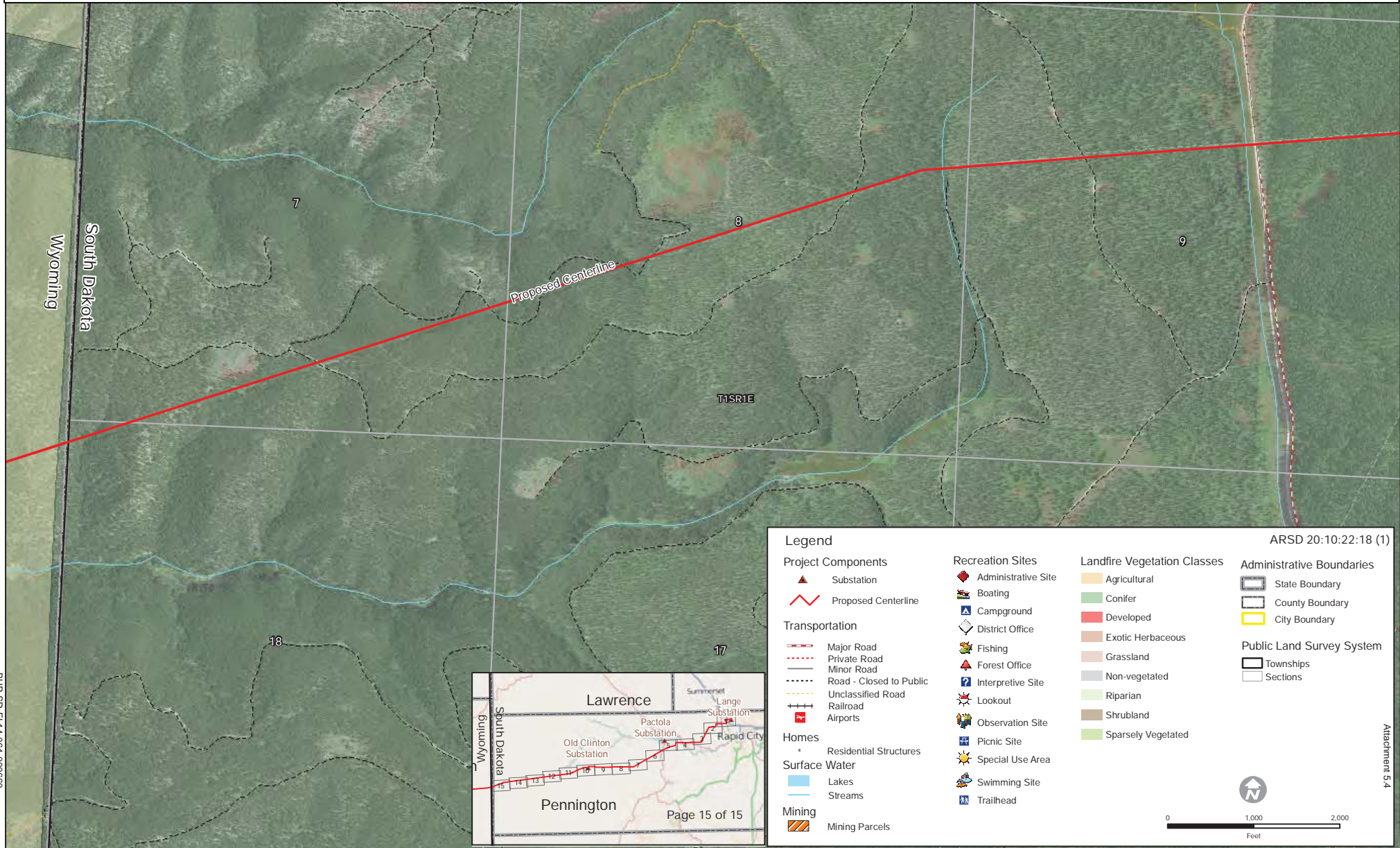
<p><b>Project Components</b></p> <ul style="list-style-type: none"> <li> Substation</li> <li> Proposed Centerline</li> </ul> <p><b>Transportation</b></p> <ul style="list-style-type: none"> <li> Major Road</li> <li> Private Road</li> <li> Minor Road</li> <li> Road - Closed to Public</li> <li> Unclassified Road</li> <li> Railroad</li> <li> Airports</li> </ul> <p><b>Homes</b></p> <ul style="list-style-type: none"> <li> Residential Structures</li> </ul> <p><b>Surface Water</b></p> <ul style="list-style-type: none"> <li> Lakes</li> <li> Streams</li> </ul> <p><b>Mining</b></p> <ul style="list-style-type: none"> <li> Mining Parcels</li> </ul>	<p><b>Recreation Sites</b></p> <ul style="list-style-type: none"> <li> Administrative Site</li> <li> Boating</li> <li> Campground</li> <li> District Office</li> <li> Fishing</li> <li> Forest Office</li> <li> Interpretive Site</li> <li> Lookout</li> <li> Observation Site</li> <li> Picnic Site</li> <li> Special Use Area</li> <li> Swimming Site</li> <li> Trailhead</li> </ul>	<p><b>Landfire Vegetation Classes</b></p> <ul style="list-style-type: none"> <li> Agricultural</li> <li> Conifer</li> <li> Developed</li> <li> Exotic Herbaceous</li> <li> Grassland</li> <li> Non-vegetated</li> <li> Riparian</li> <li> Shrubland</li> <li> Sparsely Vegetated</li> </ul>	<p><b>Administrative Boundaries</b></p> <ul style="list-style-type: none"> <li> State Boundary</li> <li> County Boundary</li> <li> City Boundary</li> </ul> <p><b>Public Land Survey System</b></p> <ul style="list-style-type: none"> <li> Townships</li> <li> Sections</li> </ul>
---	--	---	---



BHP-SD-ELI-14-061-000659

Attachment 5.4

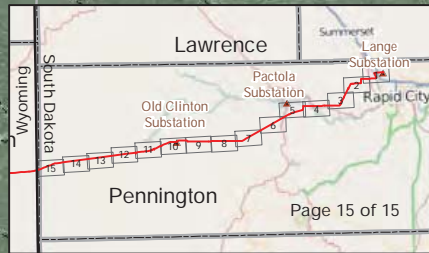
# Figure 8 - Existing Land Use 230 kV Transmission Project



ARSD 20:10:22:18 (1)

<p><b>Project Components</b></p> <ul style="list-style-type: none"> <li> Substation</li> <li> Proposed Centerline</li> </ul> <p><b>Transportation</b></p> <ul style="list-style-type: none"> <li> Major Road</li> <li> Private Road</li> <li> Minor Road</li> <li> Road - Closed to Public</li> <li> Unclassified Road</li> <li> Railroad</li> <li> Airports</li> </ul> <p><b>Homes</b></p> <ul style="list-style-type: none"> <li> Residential Structures</li> </ul> <p><b>Surface Water</b></p> <ul style="list-style-type: none"> <li> Lakes</li> <li> Streams</li> </ul> <p><b>Mining</b></p> <ul style="list-style-type: none"> <li> Mining Parcels</li> </ul>	<p><b>Recreation Sites</b></p> <ul style="list-style-type: none"> <li> Administrative Site</li> <li> Boating</li> <li> Campground</li> <li> District Office</li> <li> Fishing</li> <li> Forest Office</li> <li> Interpretive Site</li> <li> Lookout</li> <li> Observation Site</li> <li> Picnic Site</li> <li> Special Use Area</li> <li> Swimming Site</li> <li> Trailhead</li> </ul>	<p><b>Landfire Vegetation Classes</b></p> <ul style="list-style-type: none"> <li> Agricultural</li> <li> Conifer</li> <li> Developed</li> <li> Exotic Herbaceous</li> <li> Grassland</li> <li> Non-vegetated</li> <li> Riparian</li> <li> Shrubland</li> <li> Sparsely Vegetated</li> </ul>	<p><b>Administrative Boundaries</b></p> <ul style="list-style-type: none"> <li> State Boundary</li> <li> County Boundary</li> <li> City Boundary</li> </ul> <p><b>Public Land Survey System</b></p> <ul style="list-style-type: none"> <li> Townships</li> <li> Sections</li> </ul>
---	--	---	---

0 1,000 2,000  
Feet



BHP-SD-EL14-061-000680