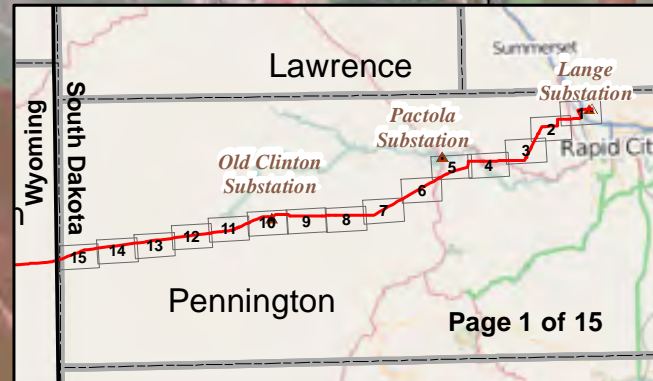


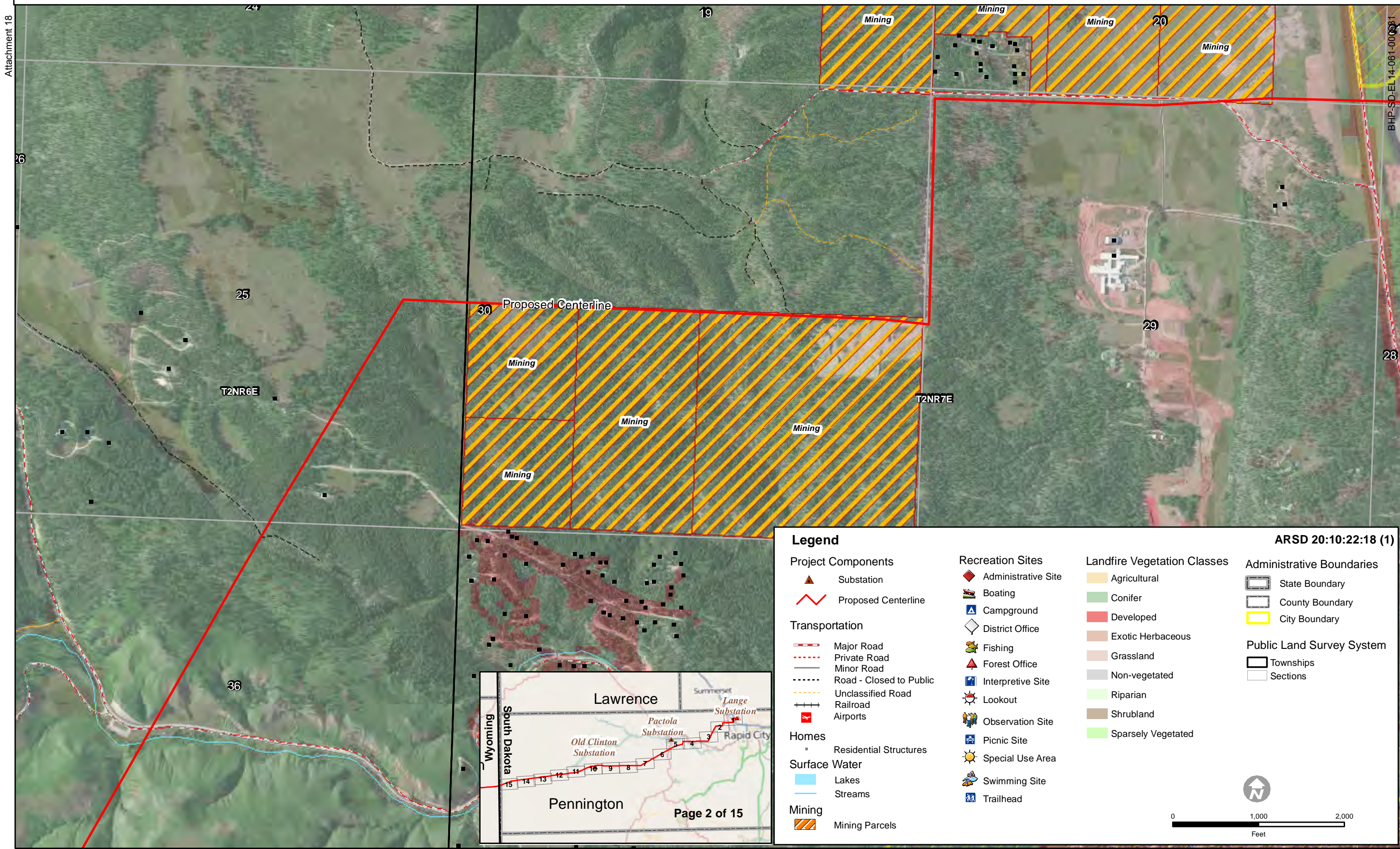
**Legend**

<p><b>Project Components</b></p> <ul style="list-style-type: none"> <li> Substation</li> <li> Proposed Centerline</li> </ul> <p><b>Transportation</b></p> <ul style="list-style-type: none"> <li> Major Road</li> <li> Private Road</li> <li> Minor Road</li> <li> Road - Closed to Public</li> <li> Unclassified Road</li> <li> Railroad</li> <li> Airports</li> </ul> <p><b>Homes</b></p> <ul style="list-style-type: none"> <li> Residential Structures</li> </ul> <p><b>Surface Water</b></p> <ul style="list-style-type: none"> <li> Lakes</li> <li> Streams</li> </ul> <p><b>Mining</b></p> <ul style="list-style-type: none"> <li> Mining Parcels</li> </ul>	<p><b>Recreation Sites</b></p> <ul style="list-style-type: none"> <li> Administrative Site</li> <li> Boating</li> <li> Campground</li> <li> District Office</li> <li> Fishing</li> <li> Forest Office</li> <li> Interpretive Site</li> <li> Lookout</li> <li> Observation Site</li> <li> Picnic Site</li> <li> Special Use Area</li> <li> Swimming Site</li> <li> Trailhead</li> </ul>	<p><b>Landfire Vegetation Classes</b></p> <ul style="list-style-type: none"> <li> Agricultural</li> <li> Conifer</li> <li> Developed</li> <li> Exotic Herbaceous</li> <li> Grassland</li> <li> Non-vegetated</li> <li> Riparian</li> <li> Shrubland</li> <li> Sparsely Vegetated</li> </ul>	<p><b>ARSD 20:10:22:18 (1)</b></p> <p><b>Administrative Boundaries</b></p> <ul style="list-style-type: none"> <li> State Boundary</li> <li> County Boundary</li> <li> City Boundary</li> </ul> <p><b>Public Land Survey System</b></p> <ul style="list-style-type: none"> <li> Townships</li> <li> Sections</li> </ul>
---	--	---	--

0 1,000 2,000  
Feet



Attachment 18

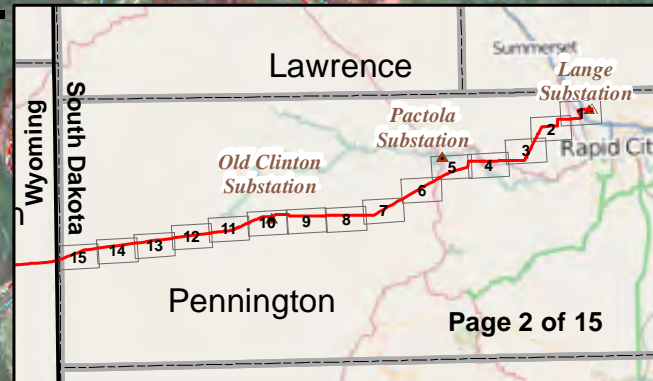


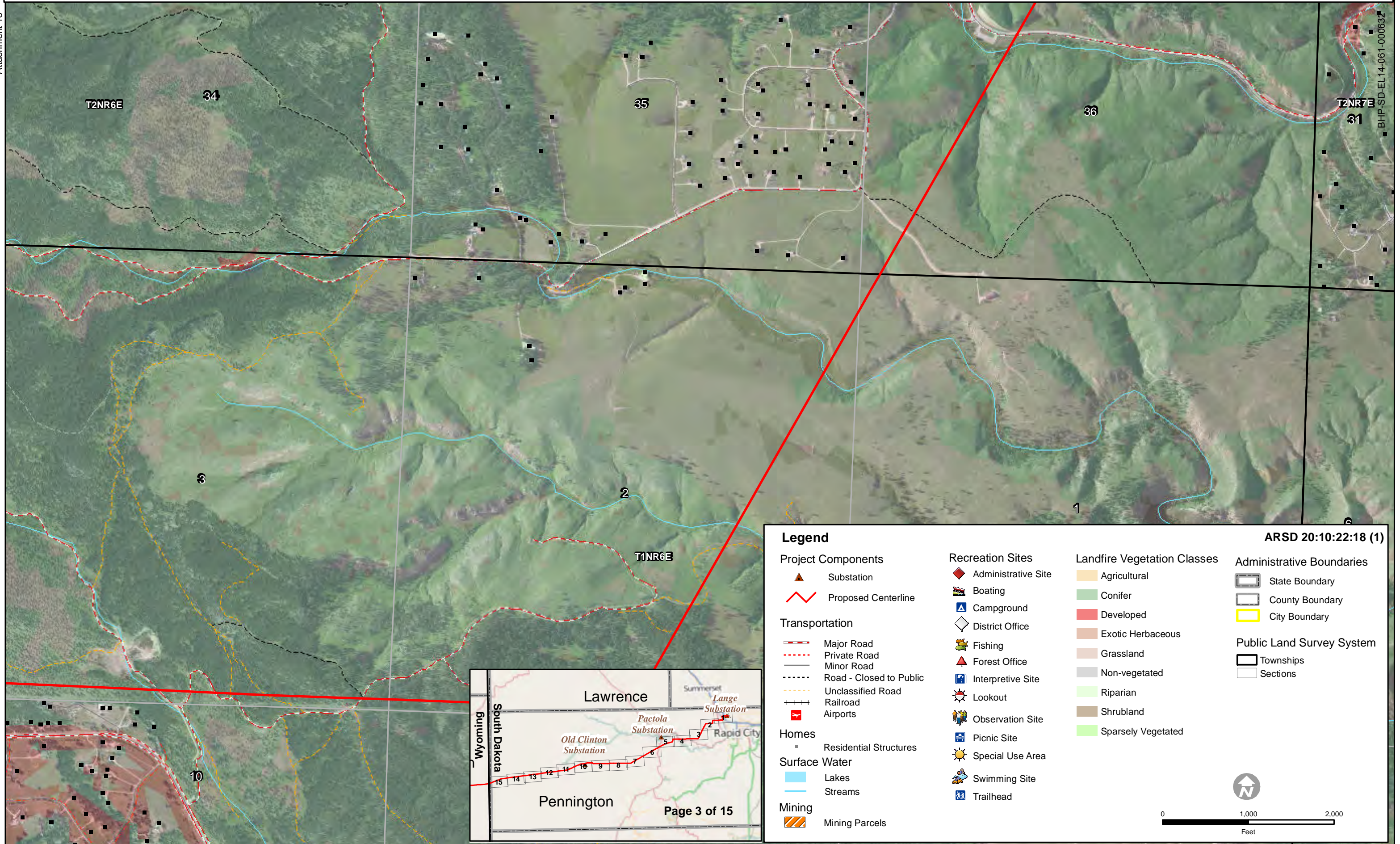
BHP-SD-EL 14-061-00081

**Legend**

<p><b>Project Components</b></p> <ul style="list-style-type: none"> <li> Substation</li> <li> Proposed Centerline</li> </ul> <p><b>Transportation</b></p> <ul style="list-style-type: none"> <li> Major Road</li> <li> Private Road</li> <li> Minor Road</li> <li> Road - Closed to Public</li> <li> Unclassified Road</li> <li> Railroad</li> <li> Airports</li> </ul> <p><b>Homes</b></p> <ul style="list-style-type: none"> <li> Residential Structures</li> </ul> <p><b>Surface Water</b></p> <ul style="list-style-type: none"> <li> Lakes</li> <li> Streams</li> </ul> <p><b>Mining</b></p> <ul style="list-style-type: none"> <li> Mining Parcels</li> </ul>	<p><b>Recreation Sites</b></p> <ul style="list-style-type: none"> <li> Administrative Site</li> <li> Boating</li> <li> Campground</li> <li> District Office</li> <li> Fishing</li> <li> Forest Office</li> <li> Interpretive Site</li> <li> Lookout</li> <li> Observation Site</li> <li> Picnic Site</li> <li> Special Use Area</li> <li> Swimming Site</li> <li> Trailhead</li> </ul>	<p><b>Landfire Vegetation Classes</b></p> <ul style="list-style-type: none"> <li> Agricultural</li> <li> Conifer</li> <li> Developed</li> <li> Exotic Herbaceous</li> <li> Grassland</li> <li> Non-vegetated</li> <li> Riparian</li> <li> Shrubland</li> <li> Sparsely Vegetated</li> </ul>	<p><b>ARSD 20:10:22:18 (1)</b></p> <p><b>Administrative Boundaries</b></p> <ul style="list-style-type: none"> <li> State Boundary</li> <li> County Boundary</li> <li> City Boundary</li> </ul> <p><b>Public Land Survey System</b></p> <ul style="list-style-type: none"> <li> Townships</li> <li> Sections</li> </ul>
---	--	---	--

0 1,000 2,000  
Feet



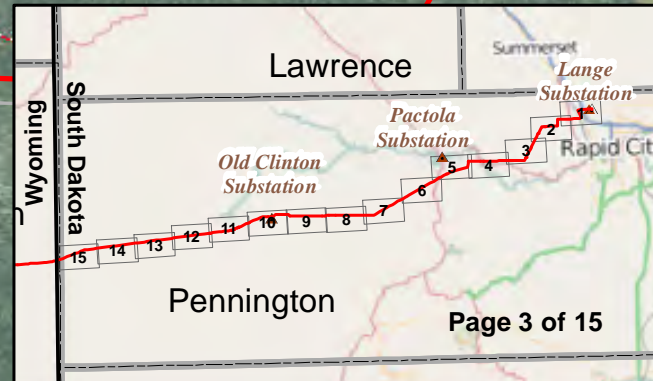


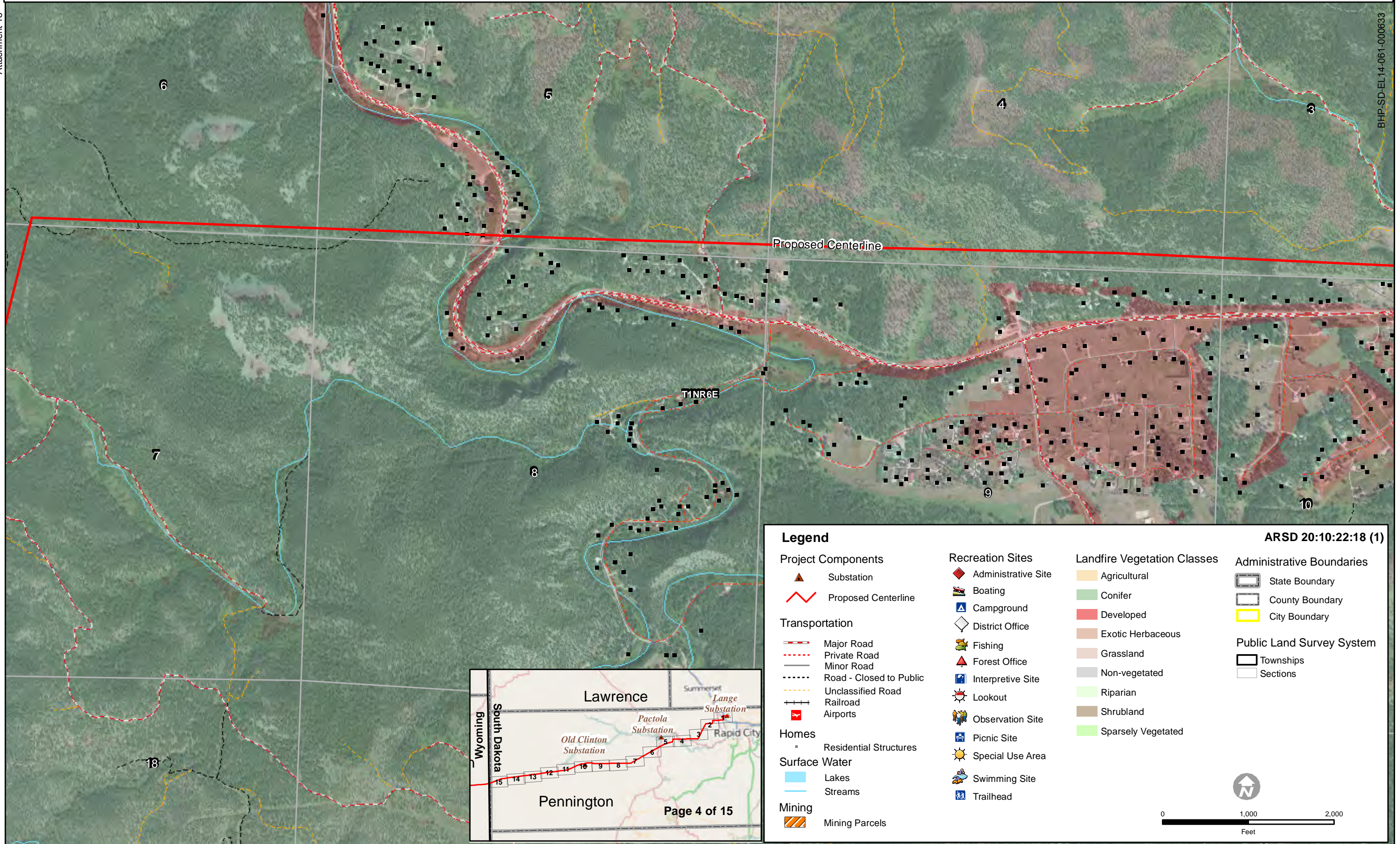
**Legend**

<p><b>Project Components</b></p> <ul style="list-style-type: none"> <li> Substation</li> <li> Proposed Centerline</li> </ul> <p><b>Transportation</b></p> <ul style="list-style-type: none"> <li> Major Road</li> <li> Private Road</li> <li> Minor Road</li> <li> Road - Closed to Public</li> <li> Unclassified Road</li> <li> Railroad</li> <li> Airports</li> </ul> <p><b>Homes</b></p> <ul style="list-style-type: none"> <li> Residential Structures</li> </ul> <p><b>Surface Water</b></p> <ul style="list-style-type: none"> <li> Lakes</li> <li> Streams</li> </ul> <p><b>Mining</b></p> <ul style="list-style-type: none"> <li> Mining Parcels</li> </ul>	<p><b>Recreation Sites</b></p> <ul style="list-style-type: none"> <li> Administrative Site</li> <li> Boating</li> <li> Campground</li> <li> District Office</li> <li> Fishing</li> <li> Forest Office</li> <li> Interpretive Site</li> <li> Lookout</li> <li> Observation Site</li> <li> Picnic Site</li> <li> Special Use Area</li> <li> Swimming Site</li> <li> Trailhead</li> </ul>	<p><b>Landfire Vegetation Classes</b></p> <ul style="list-style-type: none"> <li> Agricultural</li> <li> Conifer</li> <li> Developed</li> <li> Exotic Herbaceous</li> <li> Grassland</li> <li> Non-vegetated</li> <li> Riparian</li> <li> Shrubland</li> <li> Sparsely Vegetated</li> </ul>	<p><b>Administrative Boundaries</b></p> <ul style="list-style-type: none"> <li> State Boundary</li> <li> County Boundary</li> <li> City Boundary</li> </ul> <p><b>Public Land Survey System</b></p> <ul style="list-style-type: none"> <li> Townships</li> <li> Sections</li> </ul>
---	--	---	---

**ARSD 20:10:22:18 (1)**

0 1,000 2,000  
Feet



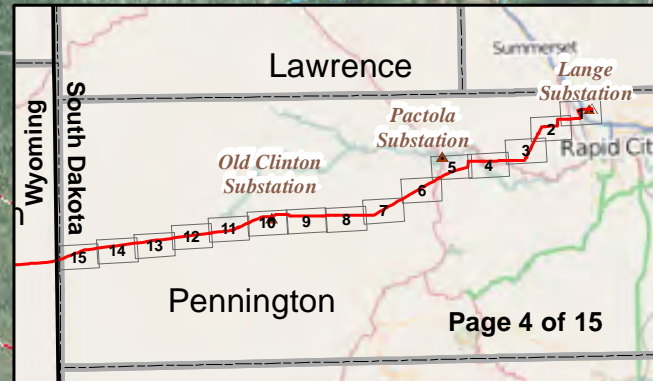


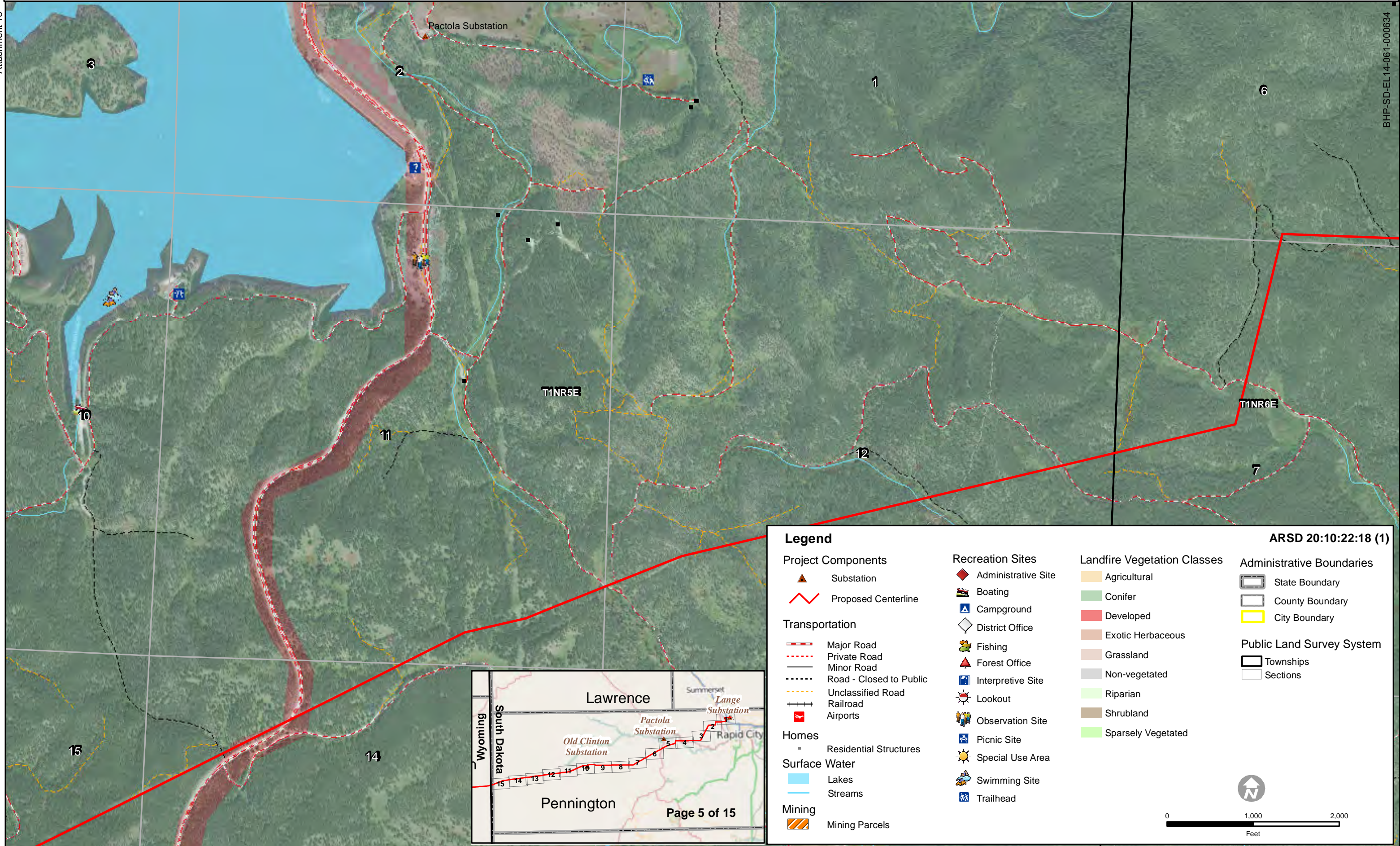
**Legend**

<p><b>Project Components</b></p> <ul style="list-style-type: none"> <li> Substation</li> <li> Proposed Centerline</li> </ul> <p><b>Transportation</b></p> <ul style="list-style-type: none"> <li> Major Road</li> <li> Private Road</li> <li> Minor Road</li> <li> Road - Closed to Public</li> <li> Unclassified Road</li> <li> Railroad</li> <li> Airports</li> </ul> <p><b>Homes</b></p> <ul style="list-style-type: none"> <li> Residential Structures</li> </ul> <p><b>Surface Water</b></p> <ul style="list-style-type: none"> <li> Lakes</li> <li> Streams</li> </ul> <p><b>Mining</b></p> <ul style="list-style-type: none"> <li> Mining Parcels</li> </ul>	<p><b>Recreation Sites</b></p> <ul style="list-style-type: none"> <li> Administrative Site</li> <li> Boating</li> <li> Campground</li> <li> District Office</li> <li> Fishing</li> <li> Forest Office</li> <li> Interpretive Site</li> <li> Lookout</li> <li> Observation Site</li> <li> Picnic Site</li> <li> Special Use Area</li> <li> Swimming Site</li> <li> Trailhead</li> </ul>	<p><b>Landfire Vegetation Classes</b></p> <ul style="list-style-type: none"> <li> Agricultural</li> <li> Conifer</li> <li> Developed</li> <li> Exotic Herbaceous</li> <li> Grassland</li> <li> Non-vegetated</li> <li> Riparian</li> <li> Shrubland</li> <li> Sparsely Vegetated</li> </ul>	<p><b>Administrative Boundaries</b></p> <ul style="list-style-type: none"> <li> State Boundary</li> <li> County Boundary</li> <li> City Boundary</li> </ul> <p><b>Public Land Survey System</b></p> <ul style="list-style-type: none"> <li> Townships</li> <li> Sections</li> </ul>
---	--	---	---

**ARSD 20:10:22:18 (1)**

0 1,000 2,000  
Feet



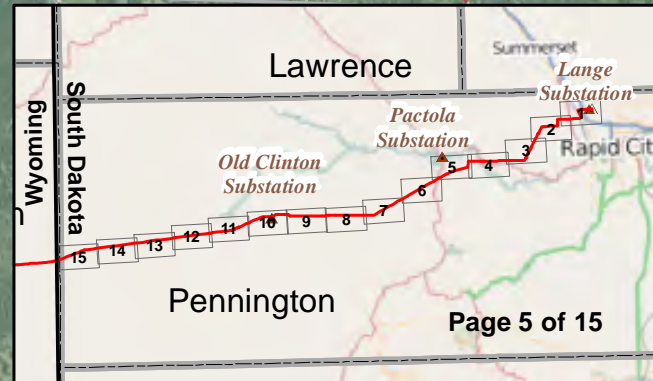


**Legend**

<p><b>Project Components</b></p> <ul style="list-style-type: none"> <li> Substation</li> <li> Proposed Centerline</li> </ul> <p><b>Transportation</b></p> <ul style="list-style-type: none"> <li> Major Road</li> <li> Private Road</li> <li> Minor Road</li> <li> Road - Closed to Public</li> <li> Unclassified Road</li> <li> Railroad</li> <li> Airports</li> </ul> <p><b>Homes</b></p> <ul style="list-style-type: none"> <li> Residential Structures</li> </ul> <p><b>Surface Water</b></p> <ul style="list-style-type: none"> <li> Lakes</li> <li> Streams</li> </ul> <p><b>Mining</b></p> <ul style="list-style-type: none"> <li> Mining Parcels</li> </ul>	<p><b>Recreation Sites</b></p> <ul style="list-style-type: none"> <li> Administrative Site</li> <li> Boating</li> <li> Campground</li> <li> District Office</li> <li> Fishing</li> <li> Forest Office</li> <li> Interpretive Site</li> <li> Lookout</li> <li> Observation Site</li> <li> Picnic Site</li> <li> Special Use Area</li> <li> Swimming Site</li> <li> Trailhead</li> </ul>	<p><b>Landfire Vegetation Classes</b></p> <ul style="list-style-type: none"> <li> Agricultural</li> <li> Conifer</li> <li> Developed</li> <li> Exotic Herbaceous</li> <li> Grassland</li> <li> Non-vegetated</li> <li> Riparian</li> <li> Shrubland</li> <li> Sparsely Vegetated</li> </ul>	<p><b>Administrative Boundaries</b></p> <ul style="list-style-type: none"> <li> State Boundary</li> <li> County Boundary</li> <li> City Boundary</li> </ul> <p><b>Public Land Survey System</b></p> <ul style="list-style-type: none"> <li> Townships</li> <li> Sections</li> </ul>
---	--	---	---

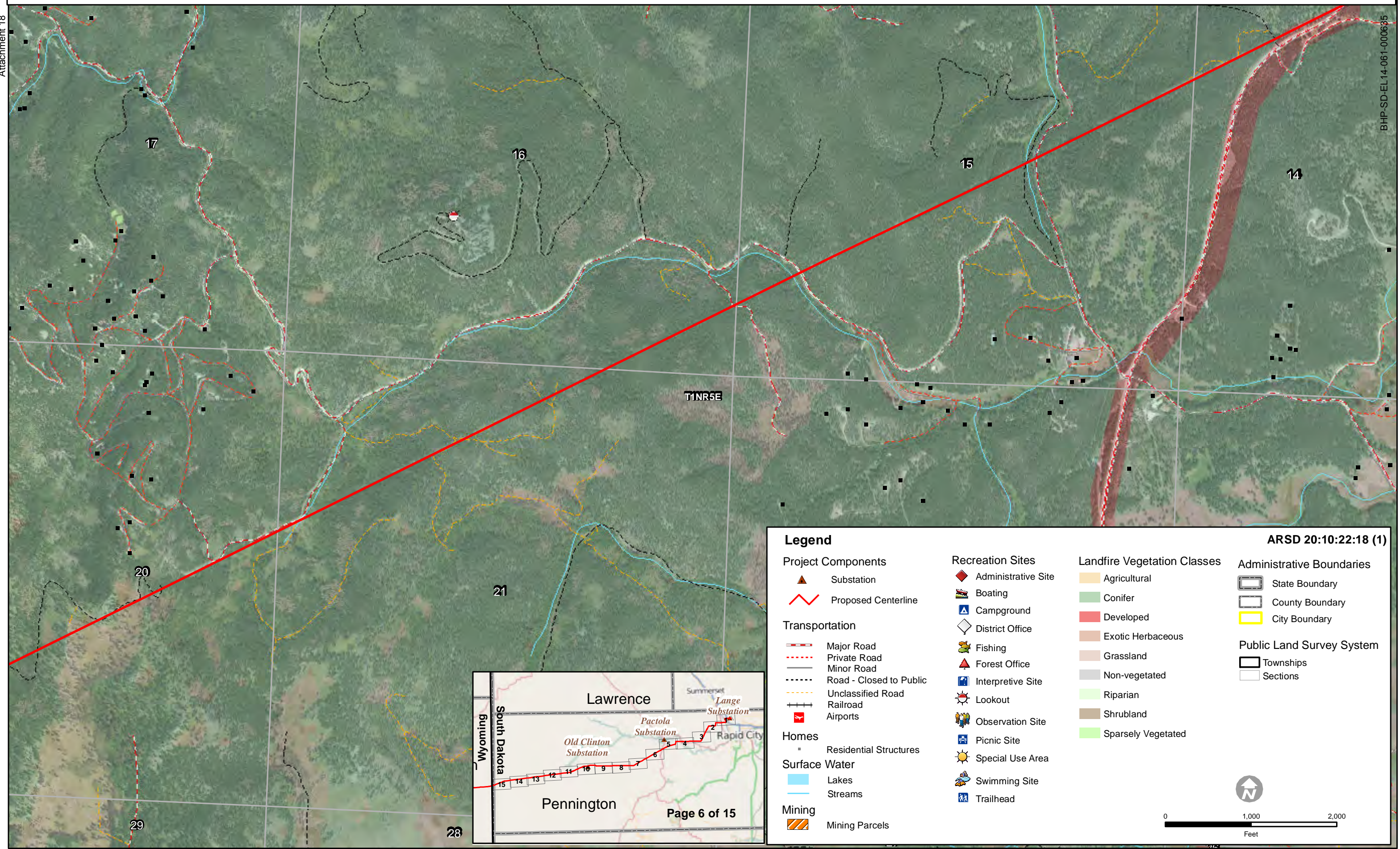
**ARSD 20:10:22:18 (1)**

0 1,000 2,000  
Feet



Attachment 18

BHP-SD-EL 14-061-000635

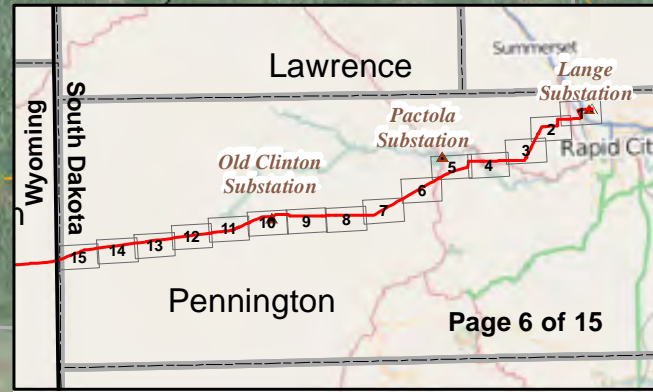


**Legend**

<p><b>Project Components</b></p> <ul style="list-style-type: none"> <li> Substation</li> <li> Proposed Centerline</li> </ul> <p><b>Transportation</b></p> <ul style="list-style-type: none"> <li> Major Road</li> <li> Private Road</li> <li> Minor Road</li> <li> Road - Closed to Public</li> <li> Unclassified Road</li> <li> Railroad</li> <li> Airports</li> </ul> <p><b>Homes</b></p> <ul style="list-style-type: none"> <li> Residential Structures</li> </ul> <p><b>Surface Water</b></p> <ul style="list-style-type: none"> <li> Lakes</li> <li> Streams</li> </ul> <p><b>Mining</b></p> <ul style="list-style-type: none"> <li> Mining Parcels</li> </ul>	<p><b>Recreation Sites</b></p> <ul style="list-style-type: none"> <li> Administrative Site</li> <li> Boating</li> <li> Campground</li> <li> District Office</li> <li> Fishing</li> <li> Forest Office</li> <li> Interpretive Site</li> <li> Lookout</li> <li> Observation Site</li> <li> Picnic Site</li> <li> Special Use Area</li> <li> Swimming Site</li> <li> Trailhead</li> </ul>	<p><b>Landfire Vegetation Classes</b></p> <ul style="list-style-type: none"> <li> Agricultural</li> <li> Conifer</li> <li> Developed</li> <li> Exotic Herbaceous</li> <li> Grassland</li> <li> Non-vegetated</li> <li> Riparian</li> <li> Shrubland</li> <li> Sparsely Vegetated</li> </ul>	<p><b>Administrative Boundaries</b></p> <ul style="list-style-type: none"> <li> State Boundary</li> <li> County Boundary</li> <li> City Boundary</li> </ul> <p><b>Public Land Survey System</b></p> <ul style="list-style-type: none"> <li> Townships</li> <li> Sections</li> </ul>
---	--	---	---

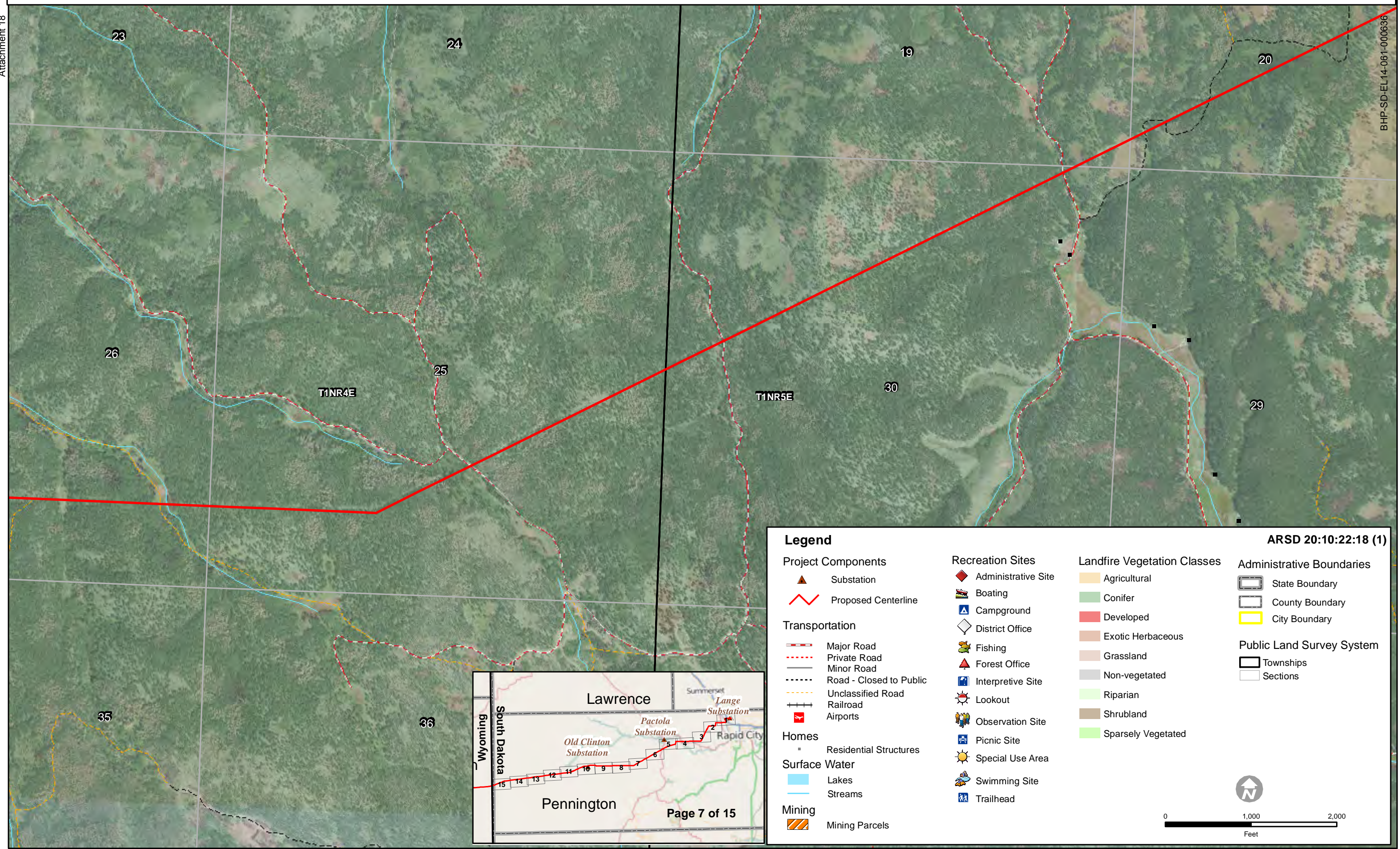
**ARSD 20:10:22:18 (1)**

0 1,000 2,000  
Feet



Attachment 18

BHP-SD-EL-14-061-000636

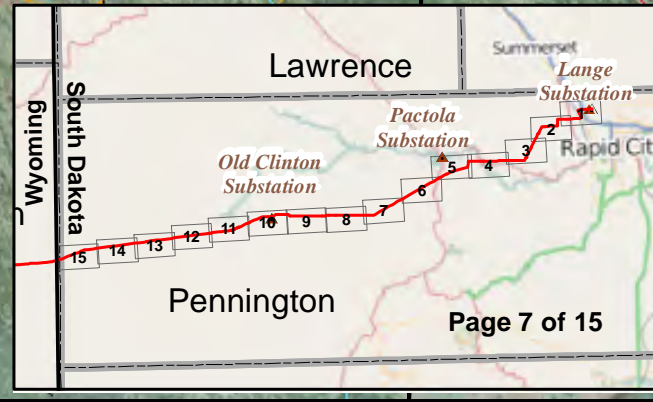


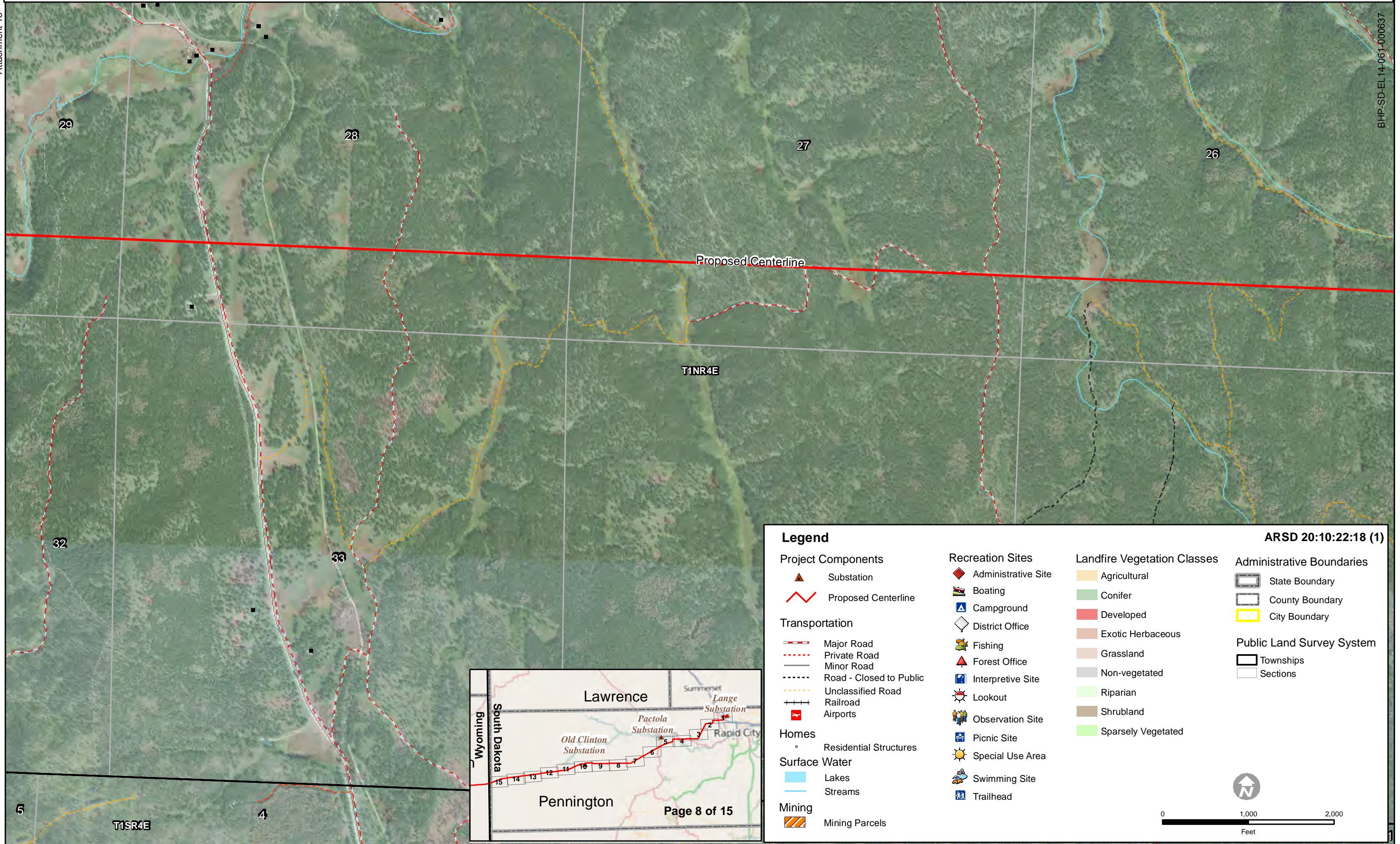
**Legend**

<p><b>Project Components</b></p> <ul style="list-style-type: none"> <li> Substation</li> <li> Proposed Centerline</li> </ul> <p><b>Transportation</b></p> <ul style="list-style-type: none"> <li> Major Road</li> <li> Private Road</li> <li> Minor Road</li> <li> Road - Closed to Public</li> <li> Unclassified Road</li> <li> Railroad</li> <li> Airports</li> </ul> <p><b>Homes</b></p> <ul style="list-style-type: none"> <li> Residential Structures</li> </ul> <p><b>Surface Water</b></p> <ul style="list-style-type: none"> <li> Lakes</li> <li> Streams</li> </ul> <p><b>Mining</b></p> <ul style="list-style-type: none"> <li> Mining Parcels</li> </ul>	<p><b>Recreation Sites</b></p> <ul style="list-style-type: none"> <li> Administrative Site</li> <li> Boating</li> <li> Campground</li> <li> District Office</li> <li> Fishing</li> <li> Forest Office</li> <li> Interpretive Site</li> <li> Lookout</li> <li> Observation Site</li> <li> Picnic Site</li> <li> Special Use Area</li> <li> Swimming Site</li> <li> Trailhead</li> </ul>	<p><b>Landfire Vegetation Classes</b></p> <ul style="list-style-type: none"> <li> Agricultural</li> <li> Conifer</li> <li> Developed</li> <li> Exotic Herbaceous</li> <li> Grassland</li> <li> Non-vegetated</li> <li> Riparian</li> <li> Shrubland</li> <li> Sparsely Vegetated</li> </ul>	<p><b>Administrative Boundaries</b></p> <ul style="list-style-type: none"> <li> State Boundary</li> <li> County Boundary</li> <li> City Boundary</li> </ul> <p><b>Public Land Survey System</b></p> <ul style="list-style-type: none"> <li> Townships</li> <li> Sections</li> </ul>
---	--	---	---

**ARSD 20:10:22:18 (1)**

0 1,000 2,000  
Feet

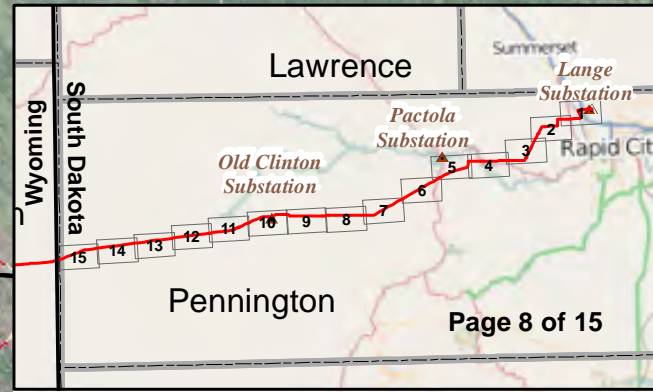




**Legend**

<p><b>Project Components</b></p> <ul style="list-style-type: none"> <li> Substation</li> <li> Proposed Centerline</li> </ul> <p><b>Transportation</b></p> <ul style="list-style-type: none"> <li> Major Road</li> <li> Private Road</li> <li> Minor Road</li> <li> Road - Closed to Public</li> <li> Unclassified Road</li> <li> Railroad</li> <li> Airports</li> </ul> <p><b>Homes</b></p> <ul style="list-style-type: none"> <li> Residential Structures</li> </ul> <p><b>Surface Water</b></p> <ul style="list-style-type: none"> <li> Lakes</li> <li> Streams</li> </ul> <p><b>Mining</b></p> <ul style="list-style-type: none"> <li> Mining Parcels</li> </ul>	<p><b>Recreation Sites</b></p> <ul style="list-style-type: none"> <li> Administrative Site</li> <li> Boating</li> <li> Campground</li> <li> District Office</li> <li> Fishing</li> <li> Forest Office</li> <li> Interpretive Site</li> <li> Lookout</li> <li> Observation Site</li> <li> Picnic Site</li> <li> Special Use Area</li> <li> Swimming Site</li> <li> Trailhead</li> </ul>	<p><b>Landfire Vegetation Classes</b></p> <ul style="list-style-type: none"> <li> Agricultural</li> <li> Conifer</li> <li> Developed</li> <li> Exotic Herbaceous</li> <li> Grassland</li> <li> Non-vegetated</li> <li> Riparian</li> <li> Shrubland</li> <li> Sparsely Vegetated</li> </ul>	<p><b>ARSD 20:10:22:18 (1)</b></p> <p><b>Administrative Boundaries</b></p> <ul style="list-style-type: none"> <li> State Boundary</li> <li> County Boundary</li> <li> City Boundary</li> </ul> <p><b>Public Land Survey System</b></p> <ul style="list-style-type: none"> <li> Townships</li> <li> Sections</li> </ul>
---	--	---	--

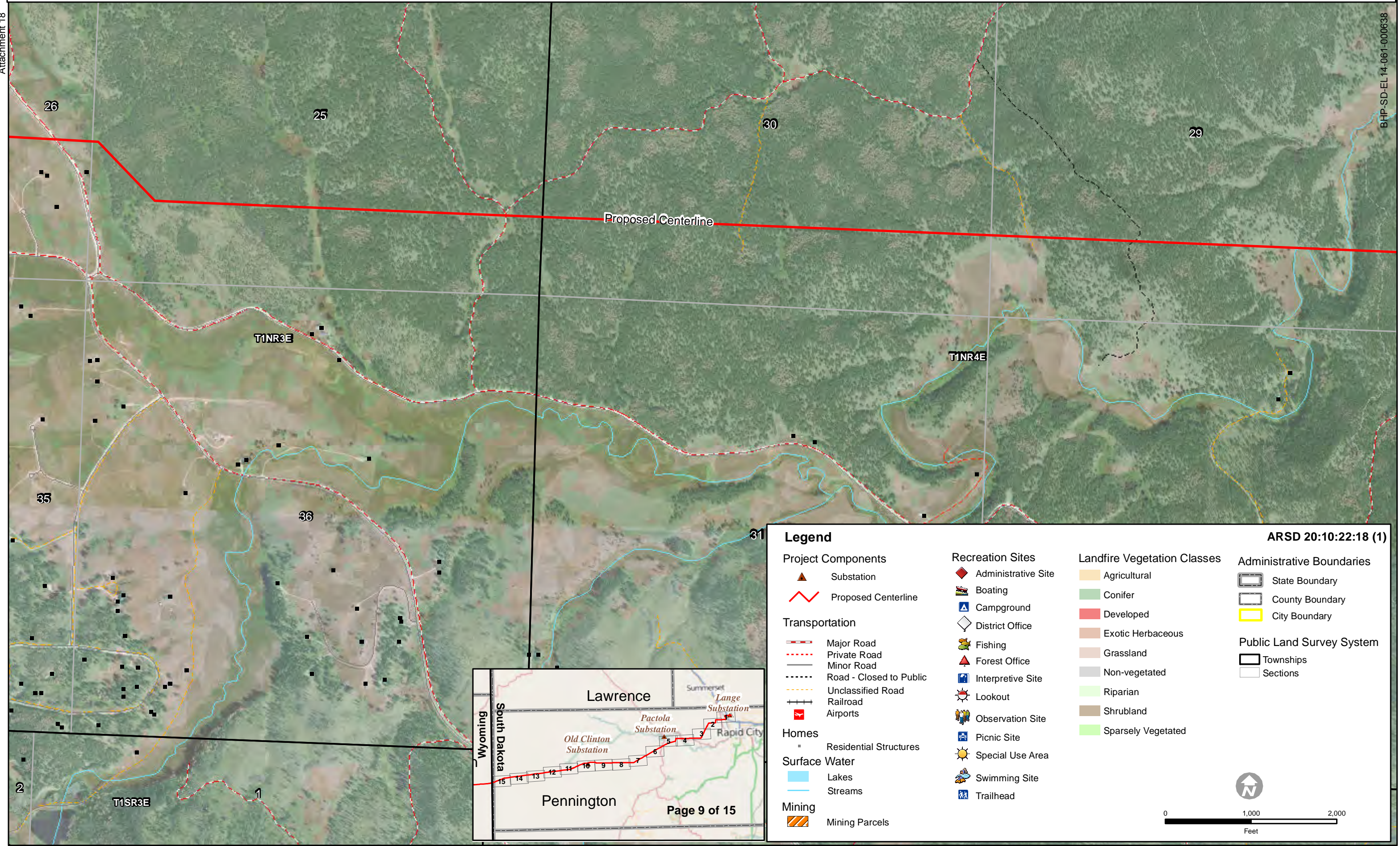
0 1,000 2,000  
Feet





Attachment 18

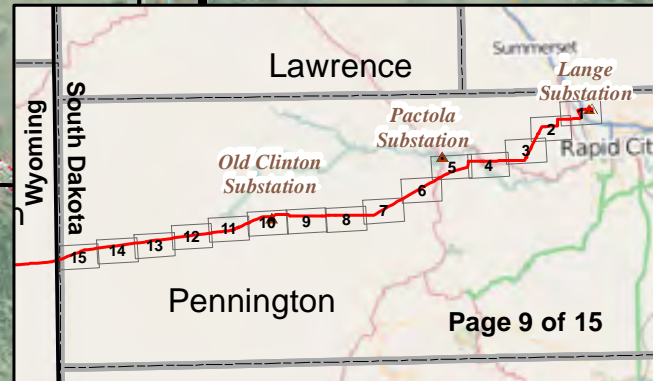
BHP-SD-EL 14-061-000638



**Legend**

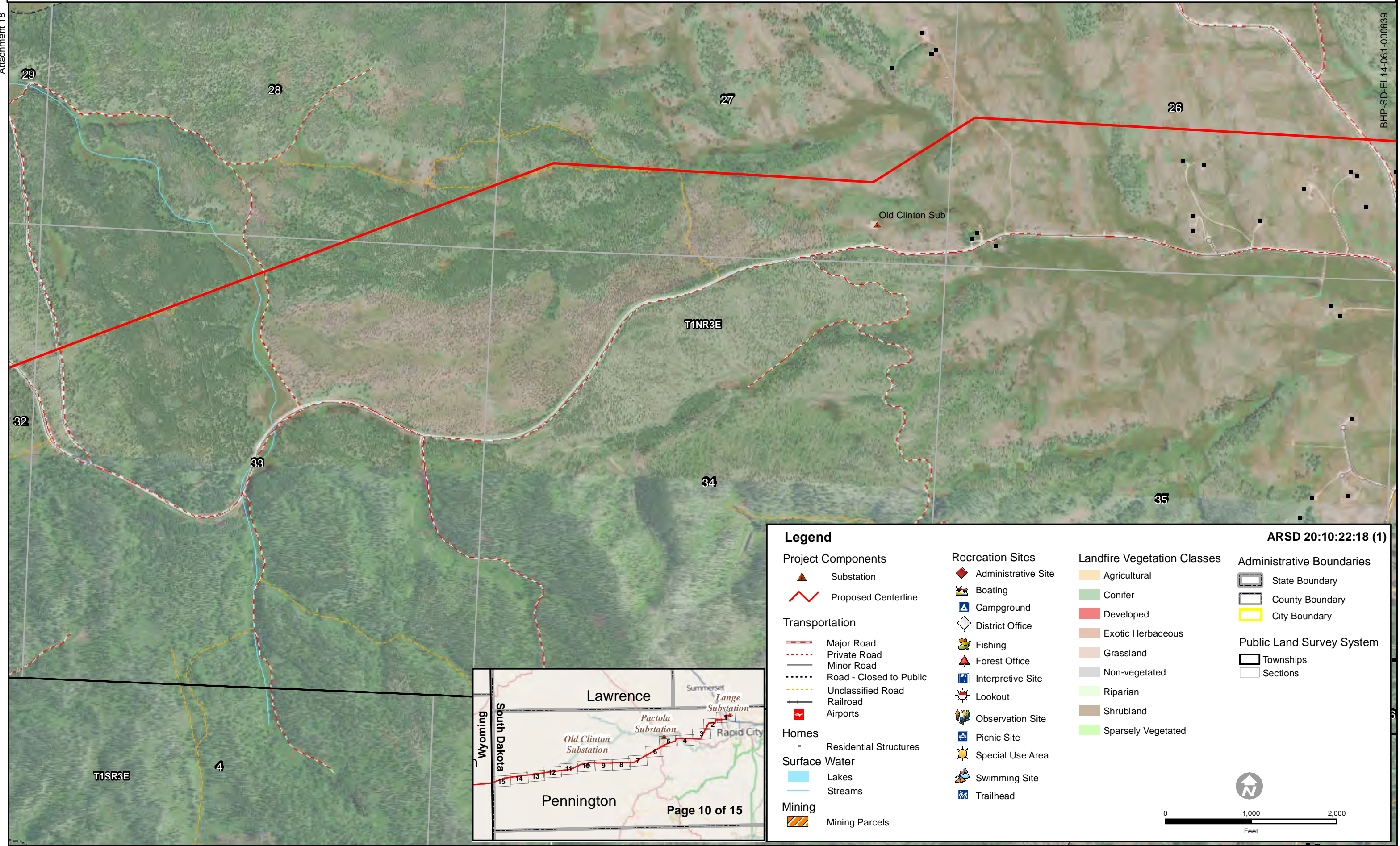
<p><b>Project Components</b></p> <ul style="list-style-type: none"> <li> Substation</li> <li> Proposed Centerline</li> </ul> <p><b>Transportation</b></p> <ul style="list-style-type: none"> <li> Major Road</li> <li> Private Road</li> <li> Minor Road</li> <li> Road - Closed to Public</li> <li> Unclassified Road</li> <li> Railroad</li> <li> Airports</li> </ul> <p><b>Homes</b></p> <ul style="list-style-type: none"> <li> Residential Structures</li> </ul> <p><b>Surface Water</b></p> <ul style="list-style-type: none"> <li> Lakes</li> <li> Streams</li> </ul> <p><b>Mining</b></p> <ul style="list-style-type: none"> <li> Mining Parcels</li> </ul>	<p><b>Recreation Sites</b></p> <ul style="list-style-type: none"> <li> Administrative Site</li> <li> Boating</li> <li> Campground</li> <li> District Office</li> <li> Fishing</li> <li> Forest Office</li> <li> Interpretive Site</li> <li> Lookout</li> <li> Observation Site</li> <li> Picnic Site</li> <li> Special Use Area</li> <li> Swimming Site</li> <li> Trailhead</li> </ul>	<p><b>Landfire Vegetation Classes</b></p> <ul style="list-style-type: none"> <li> Agricultural</li> <li> Conifer</li> <li> Developed</li> <li> Exotic Herbaceous</li> <li> Grassland</li> <li> Non-vegetated</li> <li> Riparian</li> <li> Shrubland</li> <li> Sparsely Vegetated</li> </ul>	<p><b>Administrative Boundaries</b></p> <ul style="list-style-type: none"> <li> State Boundary</li> <li> County Boundary</li> <li> City Boundary</li> </ul> <p><b>Public Land Survey System</b></p> <ul style="list-style-type: none"> <li> Townships</li> <li> Sections</li> </ul>
---	--	---	---

**ARSD 20:10:22:18 (1)**



Attachment 18

BHP-SD-EL-14-061-000639

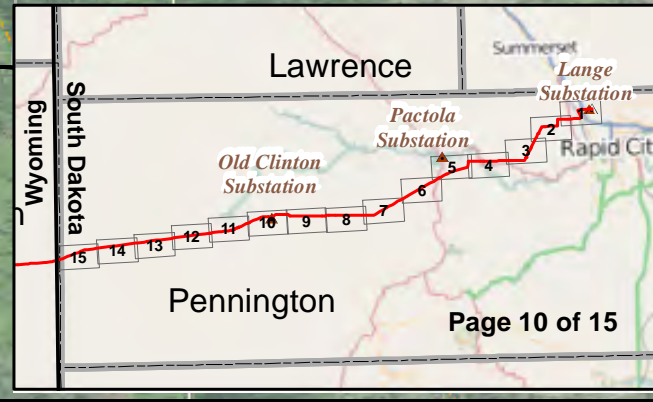


**Legend**

<p><b>Project Components</b></p> <ul style="list-style-type: none"> <li> Substation</li> <li> Proposed Centerline</li> </ul> <p><b>Transportation</b></p> <ul style="list-style-type: none"> <li> Major Road</li> <li> Private Road</li> <li> Minor Road</li> <li> Road - Closed to Public</li> <li> Unclassified Road</li> <li> Railroad</li> <li> Airports</li> </ul> <p><b>Homes</b></p> <ul style="list-style-type: none"> <li> Residential Structures</li> </ul> <p><b>Surface Water</b></p> <ul style="list-style-type: none"> <li> Lakes</li> <li> Streams</li> </ul> <p><b>Mining</b></p> <ul style="list-style-type: none"> <li> Mining Parcels</li> </ul>	<p><b>Recreation Sites</b></p> <ul style="list-style-type: none"> <li> Administrative Site</li> <li> Boating</li> <li> Campground</li> <li> District Office</li> <li> Fishing</li> <li> Forest Office</li> <li> Interpretive Site</li> <li> Lookout</li> <li> Observation Site</li> <li> Picnic Site</li> <li> Special Use Area</li> <li> Swimming Site</li> <li> Trailhead</li> </ul>	<p><b>Landfire Vegetation Classes</b></p> <ul style="list-style-type: none"> <li> Agricultural</li> <li> Conifer</li> <li> Developed</li> <li> Exotic Herbaceous</li> <li> Grassland</li> <li> Non-vegetated</li> <li> Riparian</li> <li> Shrubland</li> <li> Sparsely Vegetated</li> </ul>	<p><b>Administrative Boundaries</b></p> <ul style="list-style-type: none"> <li> State Boundary</li> <li> County Boundary</li> <li> City Boundary</li> </ul> <p><b>Public Land Survey System</b></p> <ul style="list-style-type: none"> <li> Townships</li> <li> Sections</li> </ul>
---	--	---	---

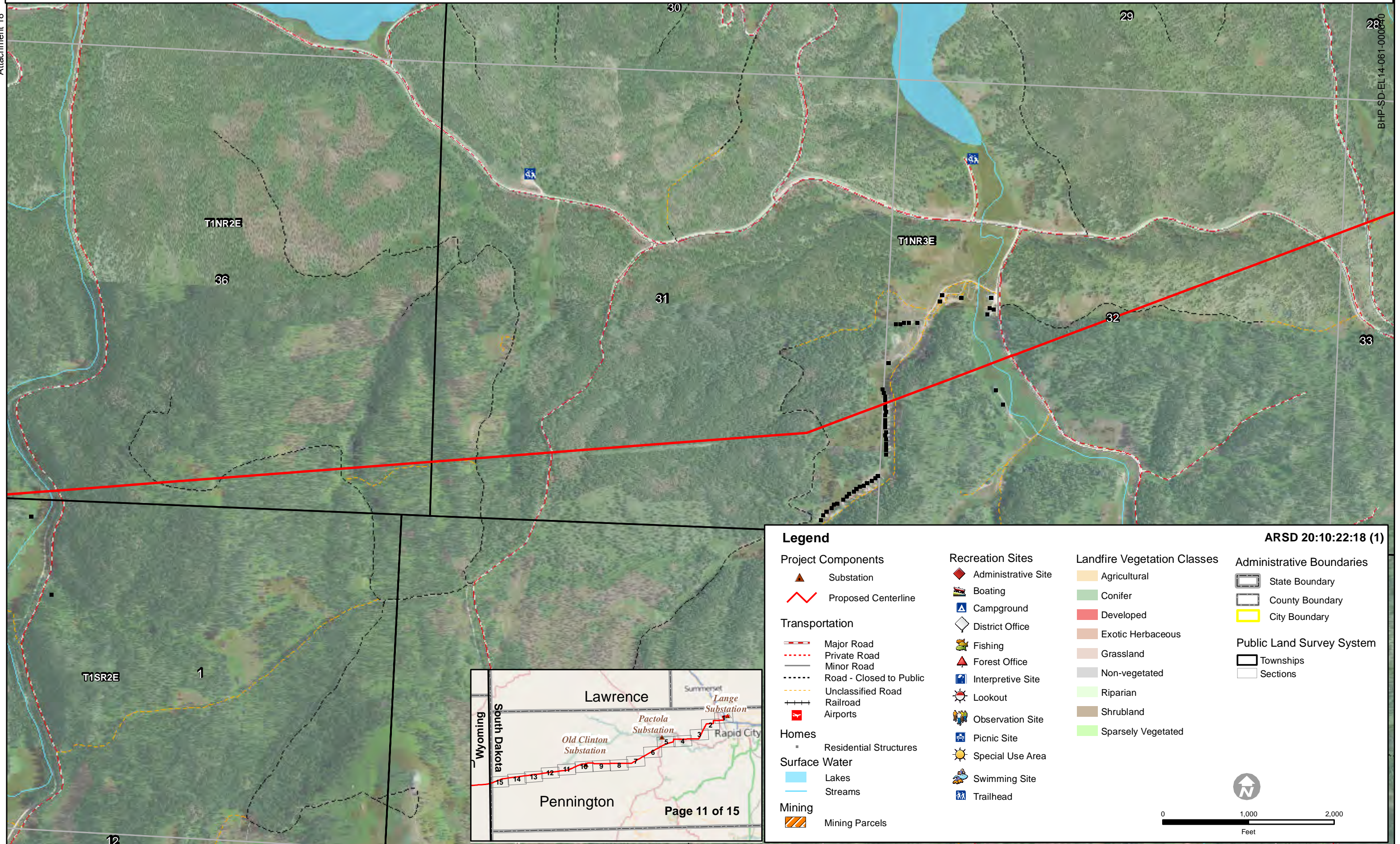
**ARSD 20:10:22:18 (1)**

0 1,000 2,000  
Feet



Attachment 18

BHP-SD-EL 14-061-000640

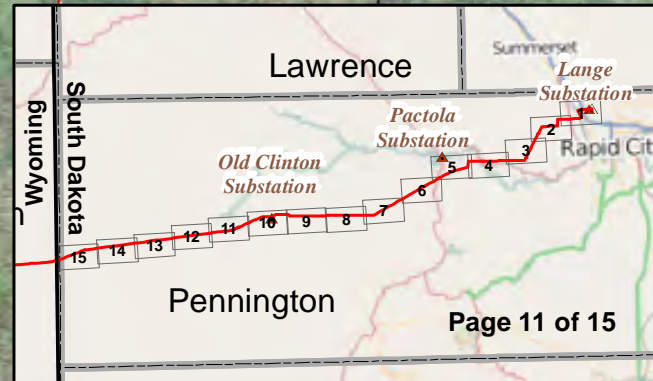


**Legend**

<p><b>Project Components</b></p> <ul style="list-style-type: none"> <li> Substation</li> <li> Proposed Centerline</li> </ul> <p><b>Transportation</b></p> <ul style="list-style-type: none"> <li> Major Road</li> <li> Private Road</li> <li> Minor Road</li> <li> Road - Closed to Public</li> <li> Unclassified Road</li> <li> Railroad</li> <li> Airports</li> </ul> <p><b>Homes</b></p> <ul style="list-style-type: none"> <li> Residential Structures</li> </ul> <p><b>Surface Water</b></p> <ul style="list-style-type: none"> <li> Lakes</li> <li> Streams</li> </ul> <p><b>Mining</b></p> <ul style="list-style-type: none"> <li> Mining Parcels</li> </ul>	<p><b>Recreation Sites</b></p> <ul style="list-style-type: none"> <li> Administrative Site</li> <li> Boating</li> <li> Campground</li> <li> District Office</li> <li> Fishing</li> <li> Forest Office</li> <li> Interpretive Site</li> <li> Lookout</li> <li> Observation Site</li> <li> Picnic Site</li> <li> Special Use Area</li> <li> Swimming Site</li> <li> Trailhead</li> </ul>	<p><b>Landfire Vegetation Classes</b></p> <ul style="list-style-type: none"> <li> Agricultural</li> <li> Conifer</li> <li> Developed</li> <li> Exotic Herbaceous</li> <li> Grassland</li> <li> Non-vegetated</li> <li> Riparian</li> <li> Shrubland</li> <li> Sparsely Vegetated</li> </ul>	<p><b>Administrative Boundaries</b></p> <ul style="list-style-type: none"> <li> State Boundary</li> <li> County Boundary</li> <li> City Boundary</li> </ul> <p><b>Public Land Survey System</b></p> <ul style="list-style-type: none"> <li> Townships</li> <li> Sections</li> </ul>
---	--	---	---

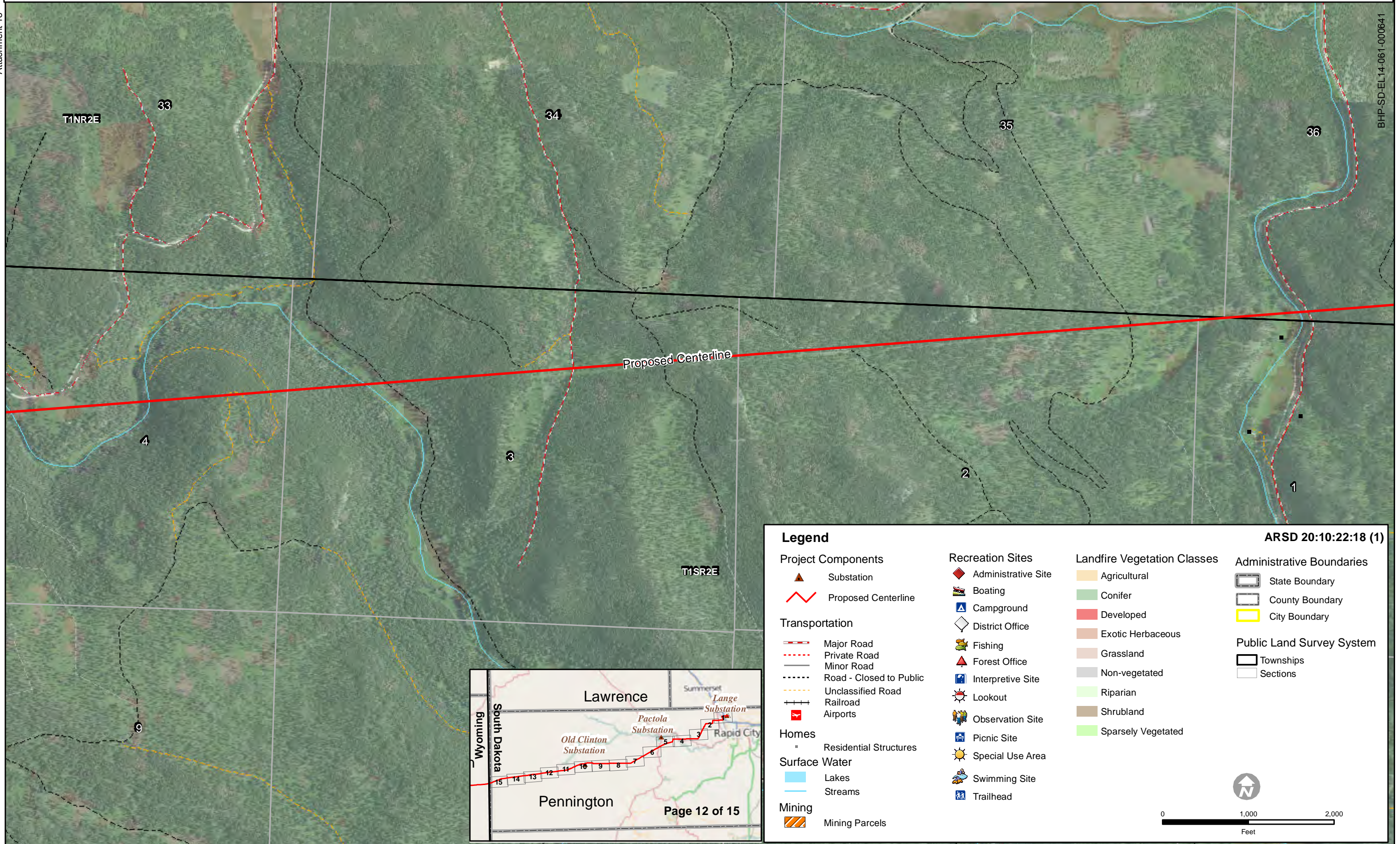
**ARSD 20:10:22:18 (1)**

0 1,000 2,000  
Feet



Attachment 18

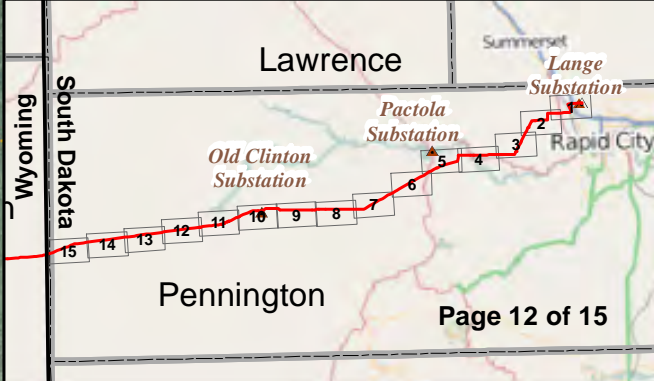
BHP-SD-EL-14-061-000641

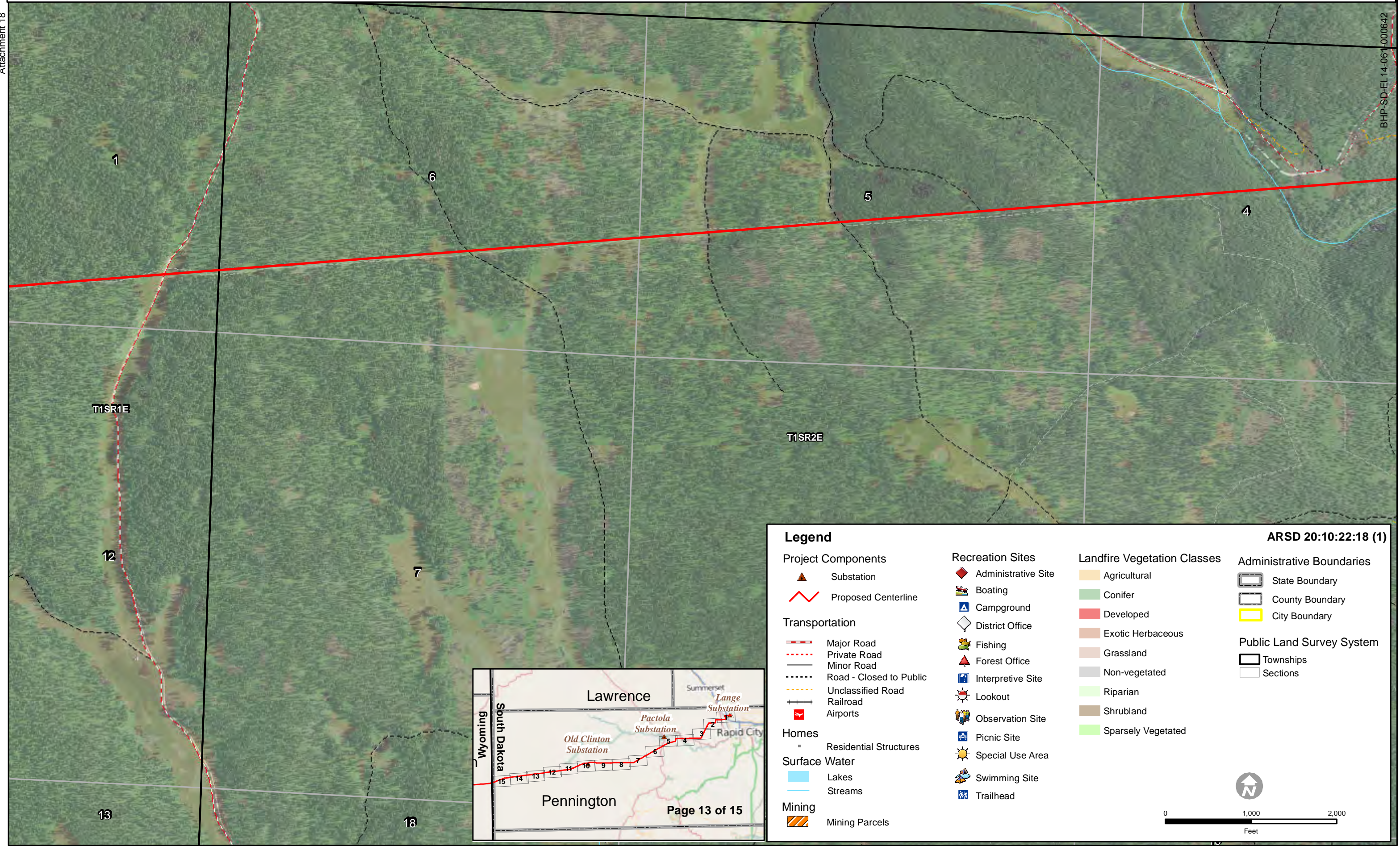


**ARSD 20:10:22:18 (1)**

<p><b>Project Components</b></p> <ul style="list-style-type: none"> <li> Substation</li> <li> Proposed Centerline</li> </ul> <p><b>Transportation</b></p> <ul style="list-style-type: none"> <li> Major Road</li> <li> Private Road</li> <li> Minor Road</li> <li> Road - Closed to Public</li> <li> Unclassified Road</li> <li> Railroad</li> <li> Airports</li> </ul> <p><b>Homes</b></p> <ul style="list-style-type: none"> <li> Residential Structures</li> </ul> <p><b>Surface Water</b></p> <ul style="list-style-type: none"> <li> Lakes</li> <li> Streams</li> </ul> <p><b>Mining</b></p> <ul style="list-style-type: none"> <li> Mining Parcels</li> </ul>	<p><b>Recreation Sites</b></p> <ul style="list-style-type: none"> <li> Administrative Site</li> <li> Boating</li> <li> Campground</li> <li> District Office</li> <li> Fishing</li> <li> Forest Office</li> <li> Interpretive Site</li> <li> Lookout</li> <li> Observation Site</li> <li> Picnic Site</li> <li> Special Use Area</li> <li> Swimming Site</li> <li> Trailhead</li> </ul>	<p><b>Landfire Vegetation Classes</b></p> <ul style="list-style-type: none"> <li> Agricultural</li> <li> Conifer</li> <li> Developed</li> <li> Exotic Herbaceous</li> <li> Grassland</li> <li> Non-vegetated</li> <li> Riparian</li> <li> Shrubland</li> <li> Sparsely Vegetated</li> </ul>	<p><b>Administrative Boundaries</b></p> <ul style="list-style-type: none"> <li> State Boundary</li> <li> County Boundary</li> <li> City Boundary</li> </ul> <p><b>Public Land Survey System</b></p> <ul style="list-style-type: none"> <li> Townships</li> <li> Sections</li> </ul>
---	--	---	---

0 1,000 2,000  
Feet



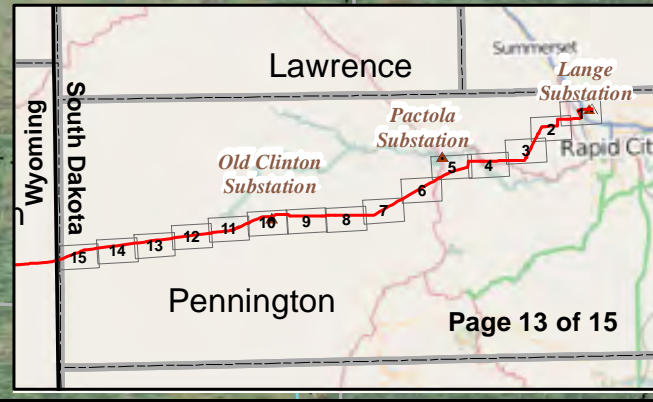


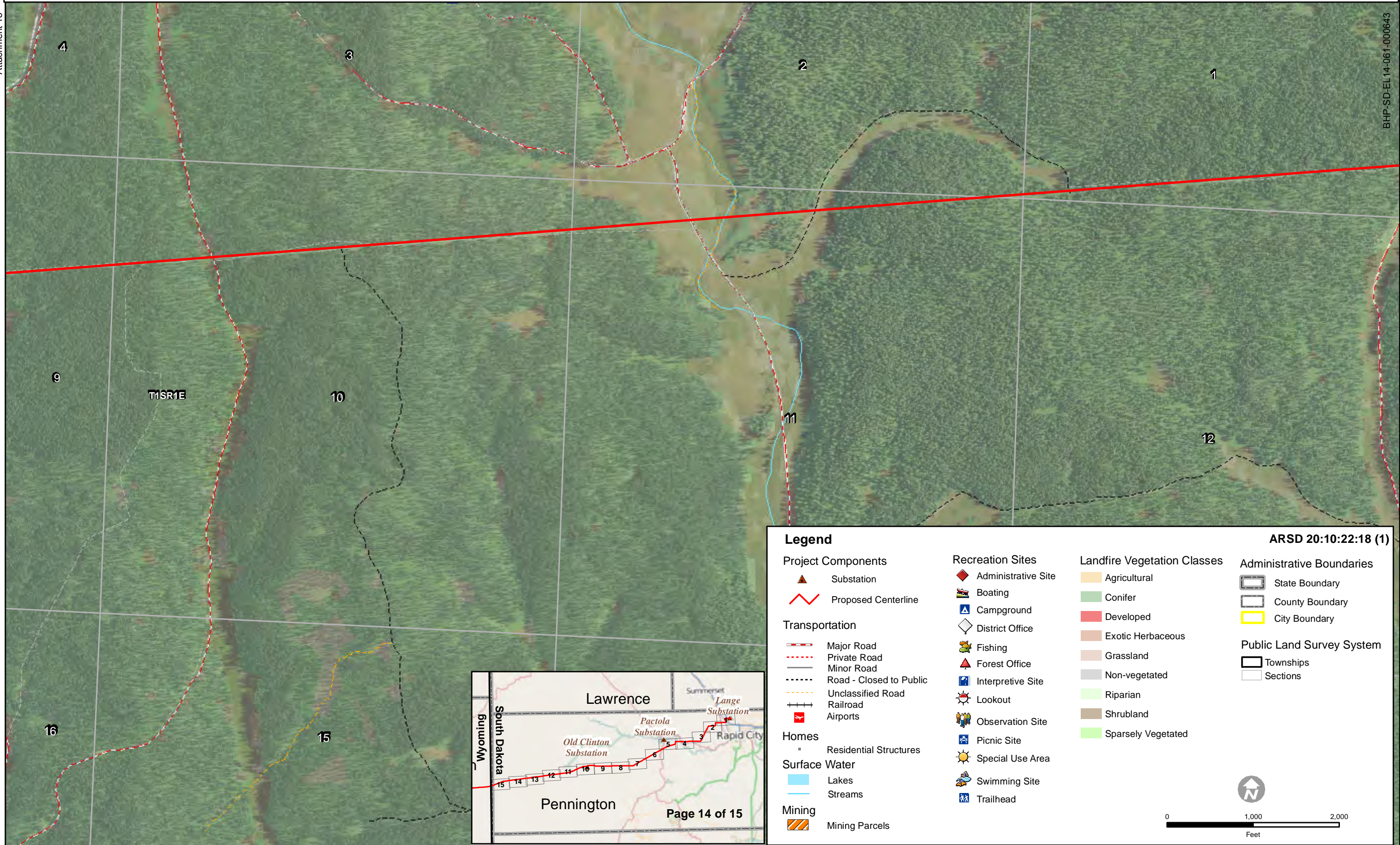
**Legend**

<p><b>Project Components</b></p> <ul style="list-style-type: none"> <li> Substation</li> <li> Proposed Centerline</li> </ul> <p><b>Transportation</b></p> <ul style="list-style-type: none"> <li> Major Road</li> <li> Private Road</li> <li> Minor Road</li> <li> Road - Closed to Public</li> <li> Unclassified Road</li> <li> Railroad</li> <li> Airports</li> </ul> <p><b>Homes</b></p> <ul style="list-style-type: none"> <li> Residential Structures</li> </ul> <p><b>Surface Water</b></p> <ul style="list-style-type: none"> <li> Lakes</li> <li> Streams</li> </ul> <p><b>Mining</b></p> <ul style="list-style-type: none"> <li> Mining Parcels</li> </ul>	<p><b>Recreation Sites</b></p> <ul style="list-style-type: none"> <li> Administrative Site</li> <li> Boating</li> <li> Campground</li> <li> District Office</li> <li> Fishing</li> <li> Forest Office</li> <li> Interpretive Site</li> <li> Lookout</li> <li> Observation Site</li> <li> Picnic Site</li> <li> Special Use Area</li> <li> Swimming Site</li> <li> Trailhead</li> </ul>	<p><b>Landfire Vegetation Classes</b></p> <ul style="list-style-type: none"> <li> Agricultural</li> <li> Conifer</li> <li> Developed</li> <li> Exotic Herbaceous</li> <li> Grassland</li> <li> Non-vegetated</li> <li> Riparian</li> <li> Shrubland</li> <li> Sparsely Vegetated</li> </ul>	<p><b>Administrative Boundaries</b></p> <ul style="list-style-type: none"> <li> State Boundary</li> <li> County Boundary</li> <li> City Boundary</li> </ul> <p><b>Public Land Survey System</b></p> <ul style="list-style-type: none"> <li> Townships</li> <li> Sections</li> </ul>
---	--	---	---

**ARSD 20:10:22:18 (1)**

0 1,000 2,000  
Feet



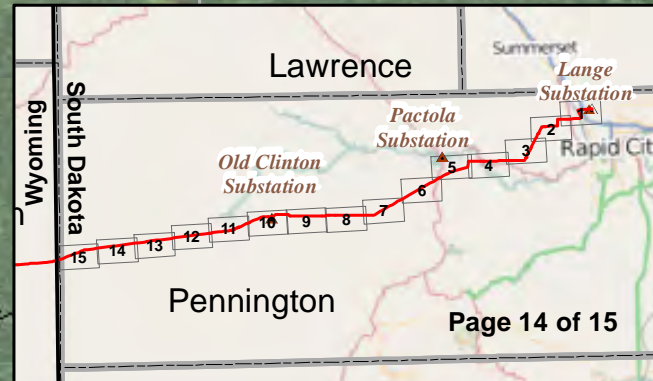


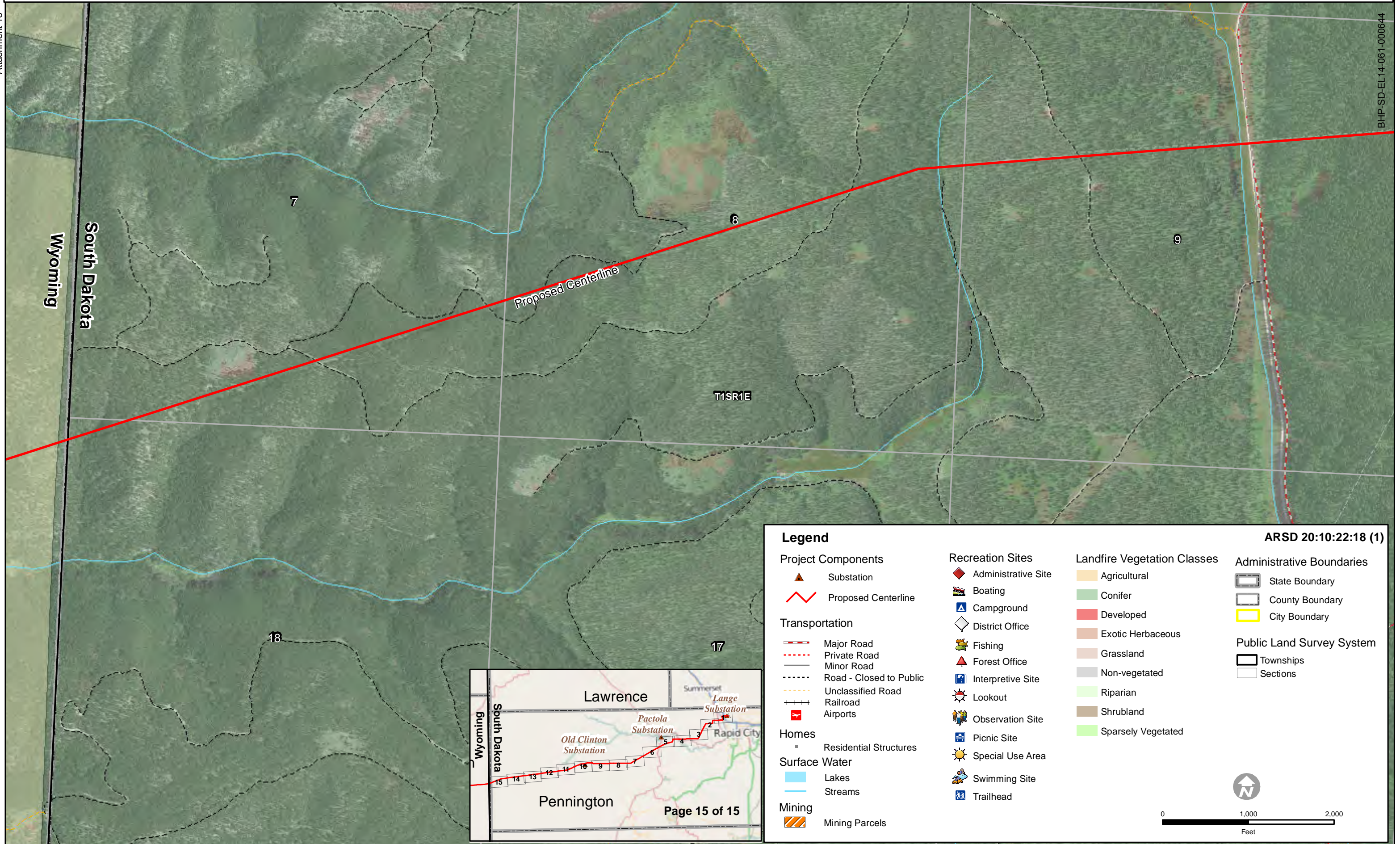
**Legend**

<p><b>Project Components</b></p> <ul style="list-style-type: none"> <li> Substation</li> <li> Proposed Centerline</li> </ul> <p><b>Transportation</b></p> <ul style="list-style-type: none"> <li> Major Road</li> <li> Private Road</li> <li> Minor Road</li> <li> Road - Closed to Public</li> <li> Unclassified Road</li> <li> Railroad</li> <li> Airports</li> </ul> <p><b>Homes</b></p> <ul style="list-style-type: none"> <li> Residential Structures</li> </ul> <p><b>Surface Water</b></p> <ul style="list-style-type: none"> <li> Lakes</li> <li> Streams</li> </ul> <p><b>Mining</b></p> <ul style="list-style-type: none"> <li> Mining Parcels</li> </ul>	<p><b>Recreation Sites</b></p> <ul style="list-style-type: none"> <li> Administrative Site</li> <li> Boating</li> <li> Campground</li> <li> District Office</li> <li> Fishing</li> <li> Forest Office</li> <li> Interpretive Site</li> <li> Lookout</li> <li> Observation Site</li> <li> Picnic Site</li> <li> Special Use Area</li> <li> Swimming Site</li> <li> Trailhead</li> </ul>	<p><b>Landfire Vegetation Classes</b></p> <ul style="list-style-type: none"> <li> Agricultural</li> <li> Conifer</li> <li> Developed</li> <li> Exotic Herbaceous</li> <li> Grassland</li> <li> Non-vegetated</li> <li> Riparian</li> <li> Shrubland</li> <li> Sparsely Vegetated</li> </ul>	<p><b>Administrative Boundaries</b></p> <ul style="list-style-type: none"> <li> State Boundary</li> <li> County Boundary</li> <li> City Boundary</li> </ul> <p><b>Public Land Survey System</b></p> <ul style="list-style-type: none"> <li> Townships</li> <li> Sections</li> </ul>
---	--	---	---

**ARSD 20:10:22:18 (1)**

0 1,000 2,000  
Feet





Wyoming  
South Dakota

Proposed Centerline

T1SR1E

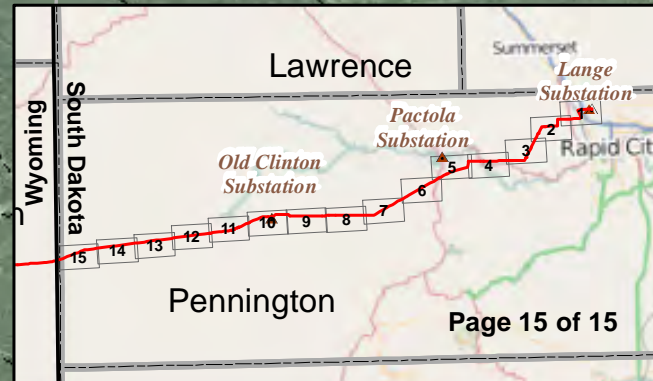
7

8

9

18

17



**Legend**

<p><b>Project Components</b></p> <ul style="list-style-type: none"> <li> Substation</li> <li> Proposed Centerline</li> </ul> <p><b>Transportation</b></p> <ul style="list-style-type: none"> <li> Major Road</li> <li> Private Road</li> <li> Minor Road</li> <li> Road - Closed to Public</li> <li> Unclassified Road</li> <li> Railroad</li> <li> Airports</li> </ul> <p><b>Homes</b></p> <ul style="list-style-type: none"> <li> Residential Structures</li> </ul> <p><b>Surface Water</b></p> <ul style="list-style-type: none"> <li> Lakes</li> <li> Streams</li> </ul> <p><b>Mining</b></p> <ul style="list-style-type: none"> <li> Mining Parcels</li> </ul>	<p><b>Recreation Sites</b></p> <ul style="list-style-type: none"> <li> Administrative Site</li> <li> Boating</li> <li> Campground</li> <li> District Office</li> <li> Fishing</li> <li> Forest Office</li> <li> Interpretive Site</li> <li> Lookout</li> <li> Observation Site</li> <li> Picnic Site</li> <li> Special Use Area</li> <li> Swimming Site</li> <li> Trailhead</li> </ul>	<p><b>Landfire Vegetation Classes</b></p> <ul style="list-style-type: none"> <li> Agricultural</li> <li> Conifer</li> <li> Developed</li> <li> Exotic Herbaceous</li> <li> Grassland</li> <li> Non-vegetated</li> <li> Riparian</li> <li> Shrubland</li> <li> Sparsely Vegetated</li> </ul>	<p><b>Administrative Boundaries</b></p> <ul style="list-style-type: none"> <li> State Boundary</li> <li> County Boundary</li> <li> City Boundary</li> </ul> <p><b>Public Land Survey System</b></p> <ul style="list-style-type: none"> <li> Townships</li> <li> Sections</li> </ul>
---	--	---	---

**ARSD 20:10:22:18 (1)**

0 1,000 2,000  
Feet