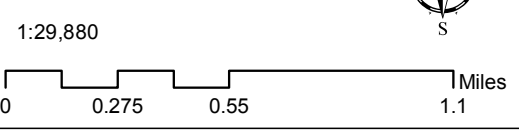
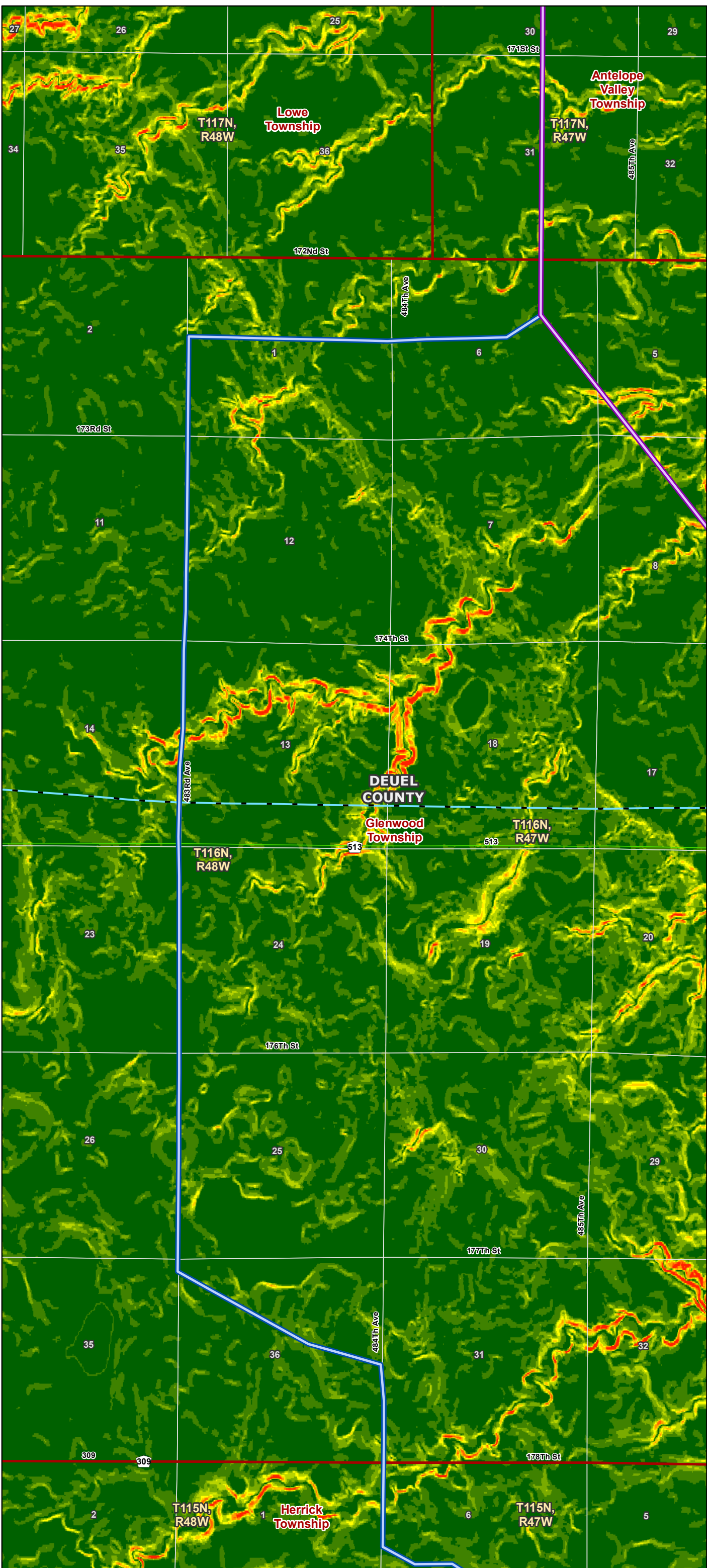
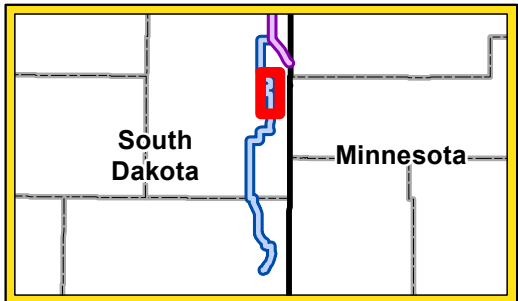


Legend

- Project End Point
 - Proposed Route
 - SDPUC Certificated Route
 - County Boundary
 - Municipal Boundary
 - Township Boundary
 - Section Boundary
- Existing Transmission Line**
- 345 kV
 - 230 kV
 - 115 kV
 - 69 kV
- Surface Slope**
- 0 - 2%
 - 2 - 4%
 - 4 - 6%
 - 6 - 8%
 - 8 - 10%
 - 10 - 12%
 - 12 - 14%
 - 14 - 16%
 - >16%

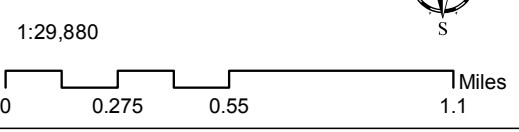


Big Stone South to Brookings County Project Slope

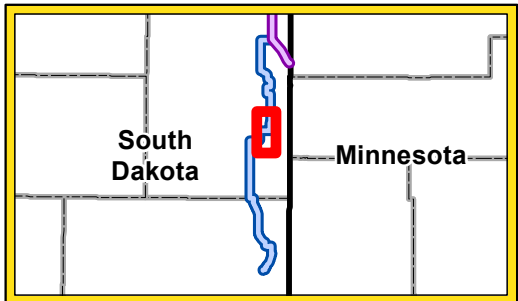


Legend

- Project End Point
 - Proposed Route
 - SDPUC Certificated Route
 - County Boundary
 - Municipal Boundary
 - Township Boundary
 - Section Boundary
- Existing Transmission Line**
- 345 kV
 - 230 kV
 - 115 kV
 - 69 kV
- Surface Slope**
- 0 - 2%
 - 2 - 4%
 - 4 - 6%
 - 6 - 8%
 - 8 - 10%
 - 10 - 12%
 - 12 - 14%
 - 14 - 16%
 - >16%



Big Stone South to Brookings County Project Slope



Legend

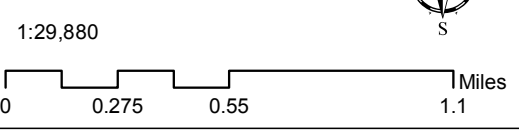
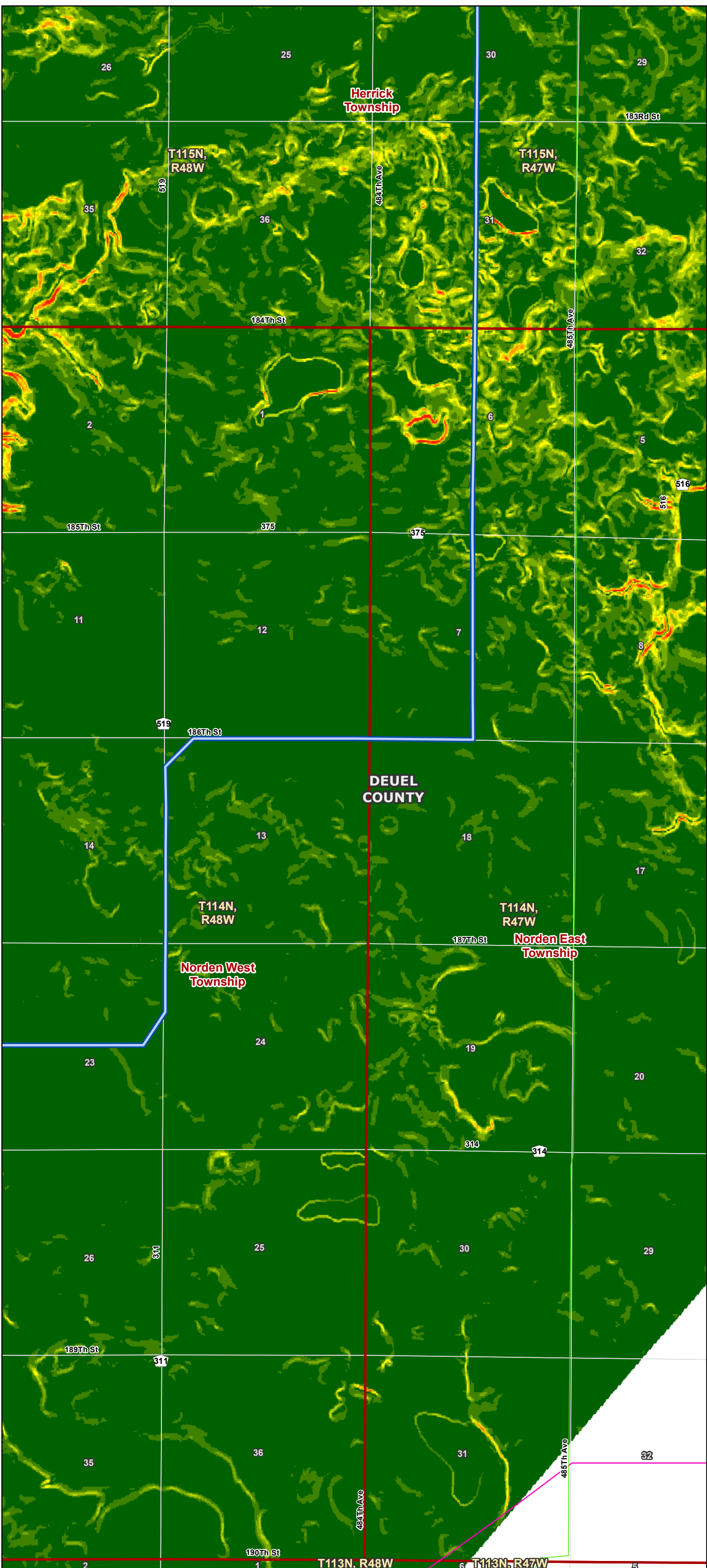
- Project End Point
- Proposed Route
- SDPUC Certificated Route
- County Boundary
- Municipal Boundary
- Township Boundary
- Section Boundary

Existing Transmission Line

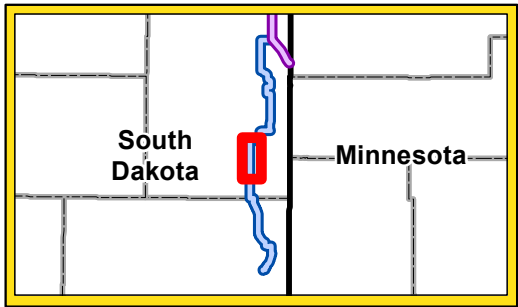
- 345 kV
- 230 kV
- 115 kV
- 69 kV

Surface Slope

- 0 - 2%
- 2 - 4%
- 4 - 6%
- 6 - 8%
- 8 - 10%
- 10 - 12%
- 12 - 14%
- 14 - 16%
- >16%



Big Stone South to Brookings County Project Slope



Legend

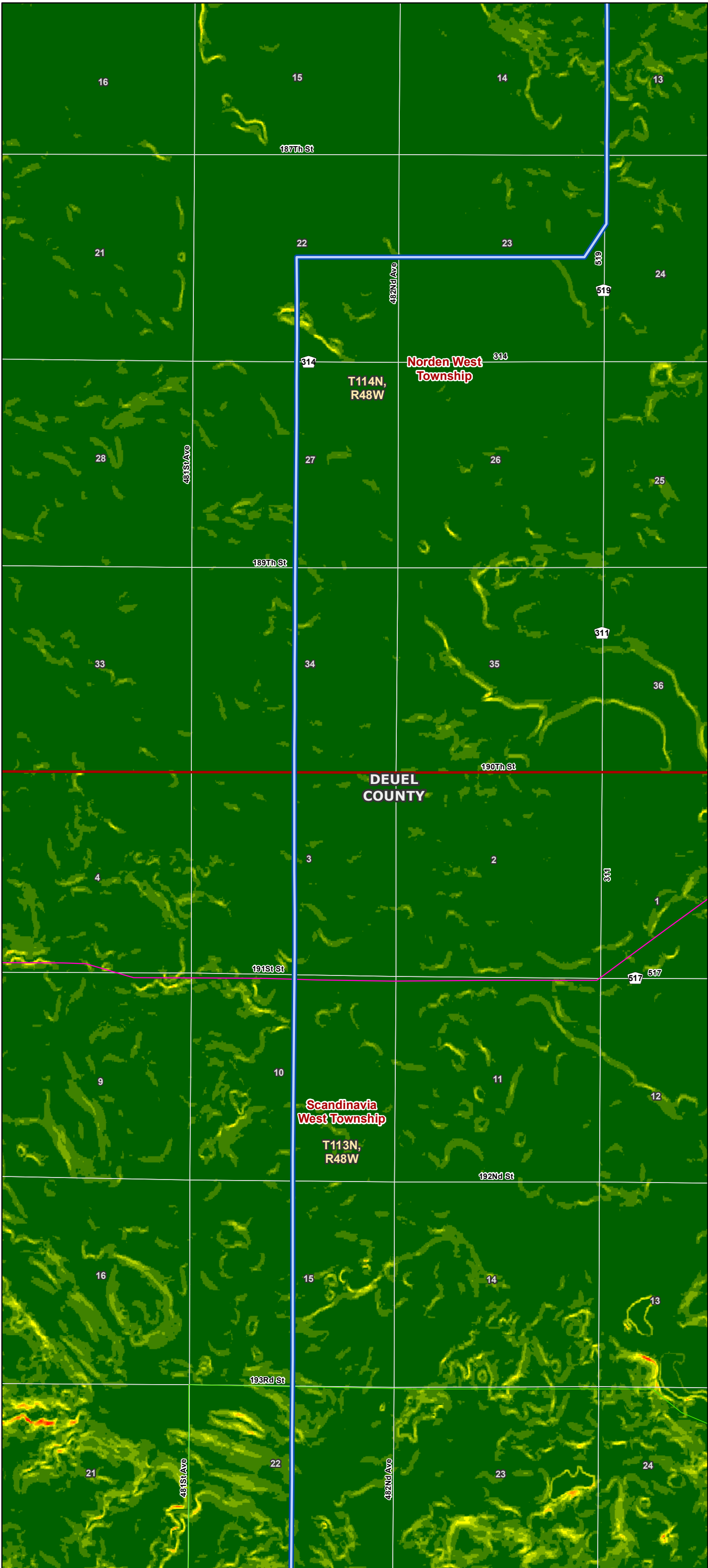
- Project End Point
- Proposed Route
- SDPUC Certificated Route
- County Boundary
- Municipal Boundary
- Township Boundary
- Section Boundary

Existing Transmission Line

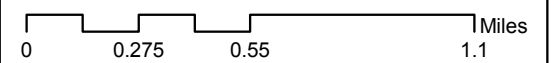
- 345 kV
- 230 kV
- 115 kV
- 69 kV

Surface Slope

- 0 - 2%
- 2 - 4%
- 4 - 6%
- 6 - 8%
- 8 - 10%
- 10 - 12%
- 12 - 14%
- 14 - 16%
- >16%



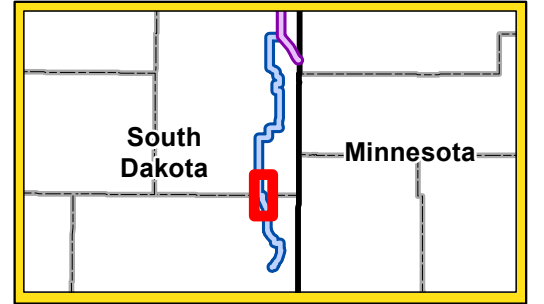
1:29,880



Big Stone South to Brookings County Project Slope

DRAWN BY: MLTEICHERT DATE: 07/17/13

S:\Xcel Energy\0159818 BigStone\GIS\GIS\MXD\2013\07\DataRequest\CapxB_Data RequestNumber_1-3.mxd



Legend

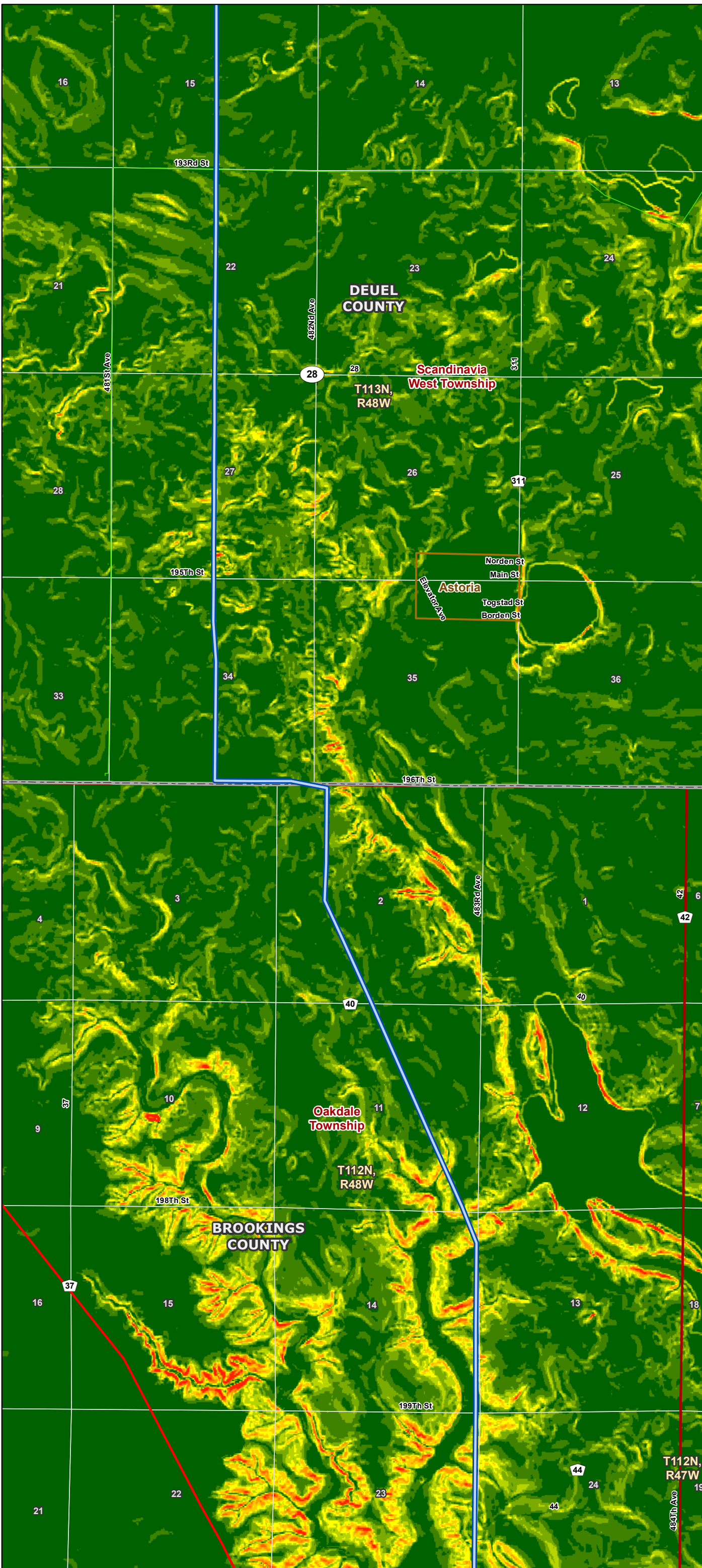
- Project End Point
- Proposed Route
- SDPUC Certificated Route
- County Boundary
- Municipal Boundary
- Township Boundary
- Section Boundary

Existing Transmission Line

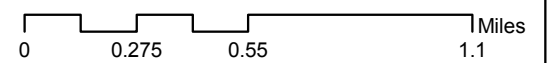
- 345 kV
- 230 kV
- 115 kV
- 69 kV

Surface Slope

- 0 - 2%
- 2 - 4%
- 4 - 6%
- 6 - 8%
- 8 - 10%
- 10 - 12%
- 12 - 14%
- 14 - 16%
- >16%



1:29,880

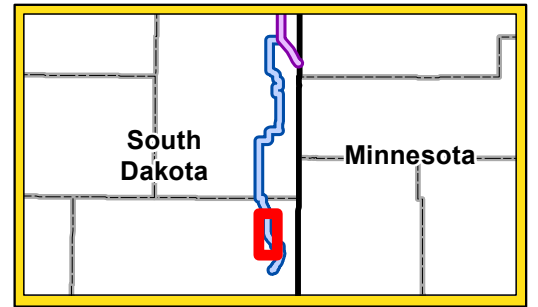


Big Stone South to Brookings County Project Slope

DRAWN BY: MLTEICHERT

DATE: 07/17/13

S:\Xcel Energy\0159818 BigStone\GIS\GIS\MXD\2013\07\DataRequest\Capx_Data RequestNumber_1-3.mxd



Legend

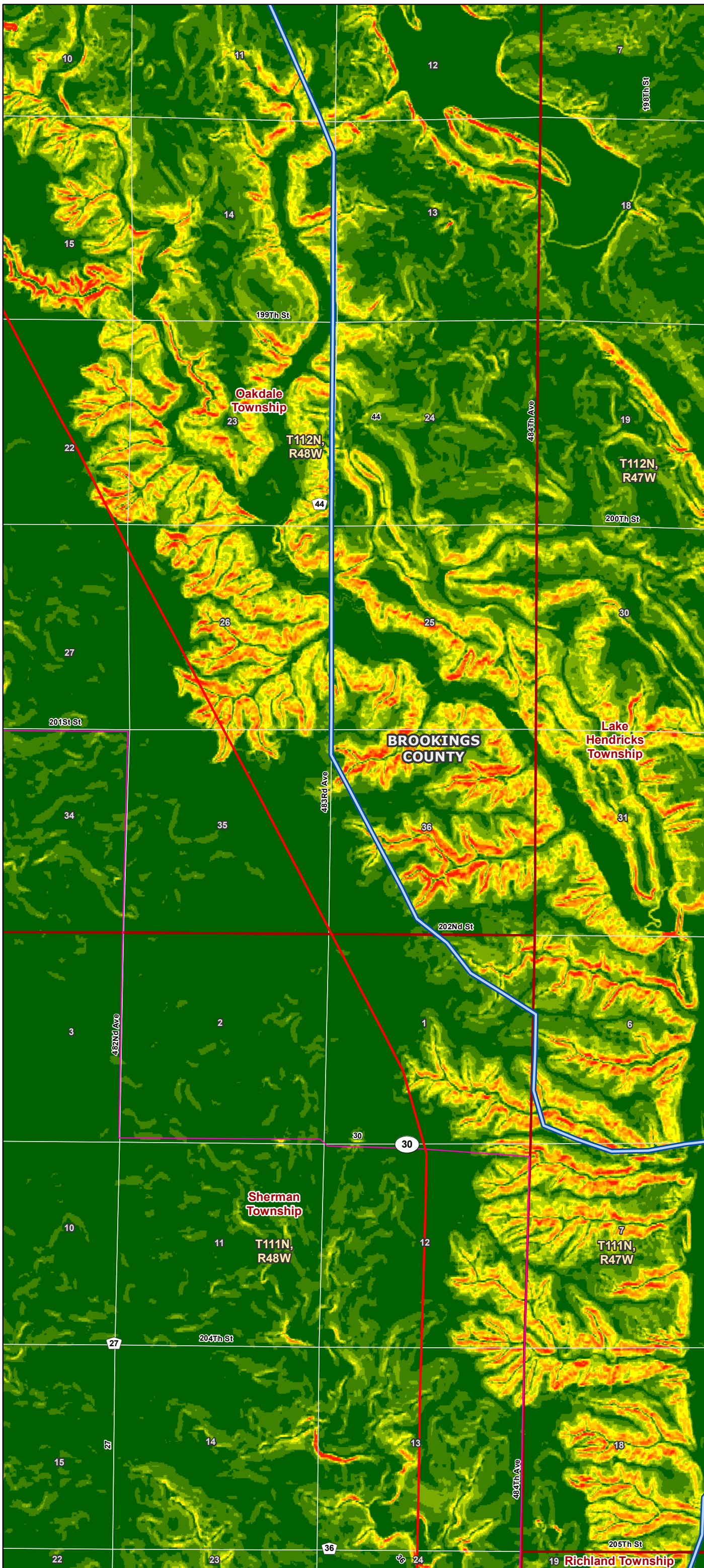
- Project End Point
- Proposed Route
- SDPUC Certificated Route
- County Boundary
- Municipal Boundary
- Township Boundary
- Section Boundary

Existing Transmission Line

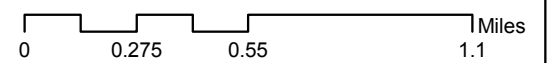
- 345 kV
- 230 kV
- 115 kV
- 69 kV

Surface Slope

- 0 - 2%
- 2 - 4%
- 4 - 6%
- 6 - 8%
- 8 - 10%
- 10 - 12%
- 12 - 14%
- 14 - 16%
- >16%



1:29,880

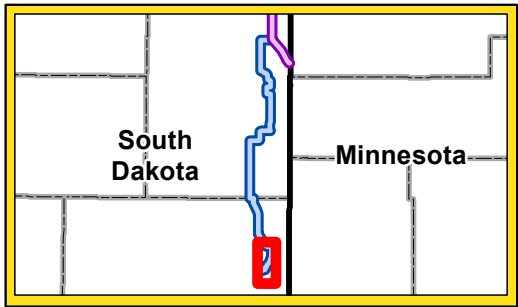


Big Stone South to Brookings County Project Slope

DRAWN BY: MLTEICHERT

DATE: 07/17/13

S:\Xcel Energy\0159818 BigStone\GIS\GIS\MXD\2013\07\DataRequest\CapxB_Data RequestNumber_1-3.mxd



Legend

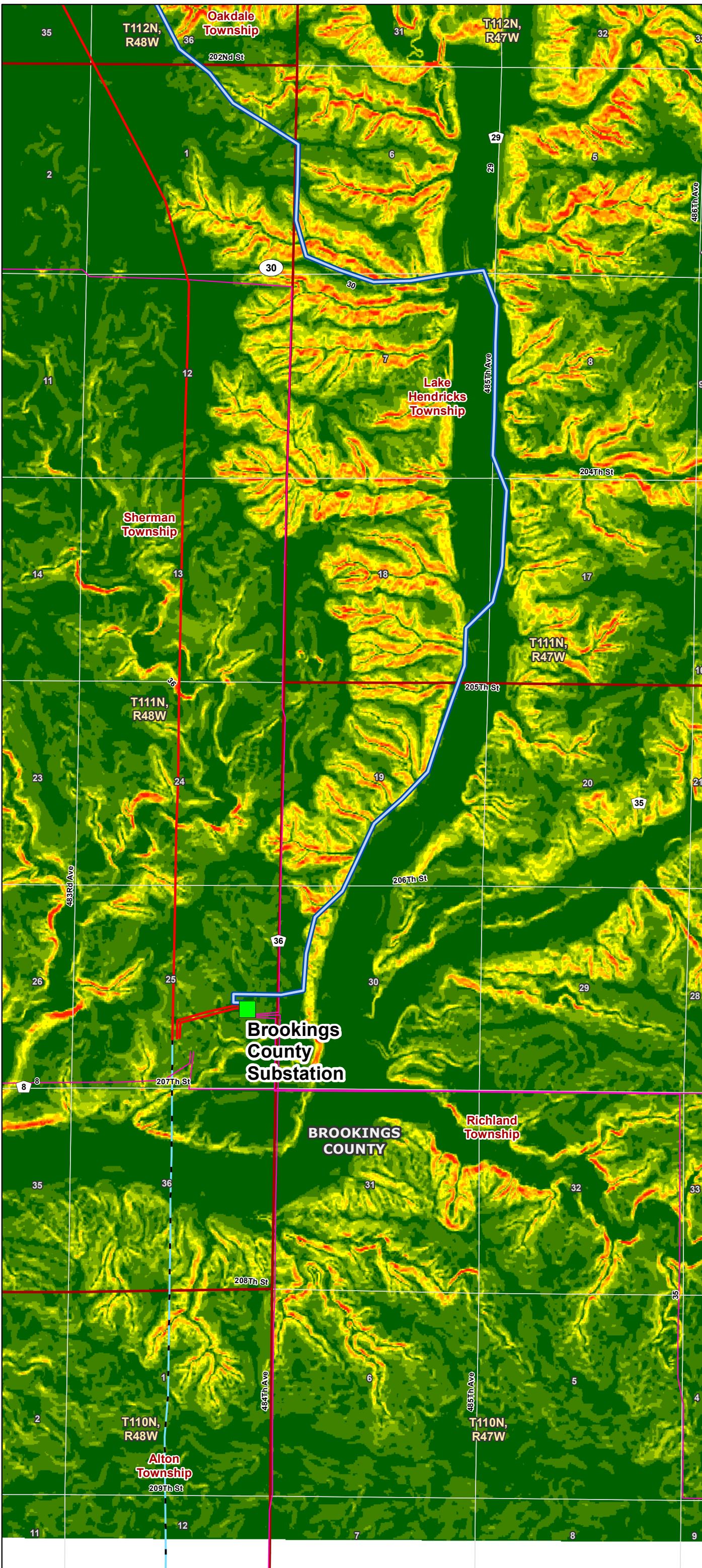
- Project End Point
- Proposed Route
- SDPUC Certificated Route
- County Boundary
- Municipal Boundary
- Township Boundary
- Section Boundary

Existing Transmission Line

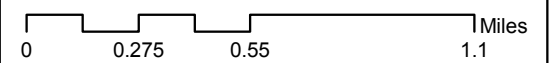
- 345 kV
- 230 kV
- 115 kV
- 69 kV

Surface Slope

- 0 - 2%
- 2 - 4%
- 4 - 6%
- 6 - 8%
- 8 - 10%
- 10 - 12%
- 12 - 14%
- 14 - 16%
- >16%



1:29,880



Big Stone South to Brookings County Project Slope

DRAWN BY: MLTEICHERT DATE: 07/17/13

S:\Xcel Energy\0159818 Big Stone\GIS\GIS\MXD\2013\07\DataRequest\Capx_Data RequestNumber_1-3.mxd