

Scale: 1" equals 6000'

**0832
Project
Area**

Ad Hoc Map

THIS MAP/DOCUMENT IS A TOOL TO ASSIST EMPLOYEES IN THE PERFORMANCE OF THEIR JOBS. YOUR PERSONAL SAFETY IS PROVIDED FOR BY USING SAFETY PRACTICES, PROCEDURES AND EQUIPMENT AS DESCRIBED IN THE SAFETY TRAINING PROGRAMS, MANUALS AND SPARS.

By: dbrc99

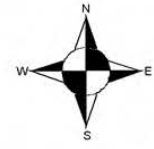
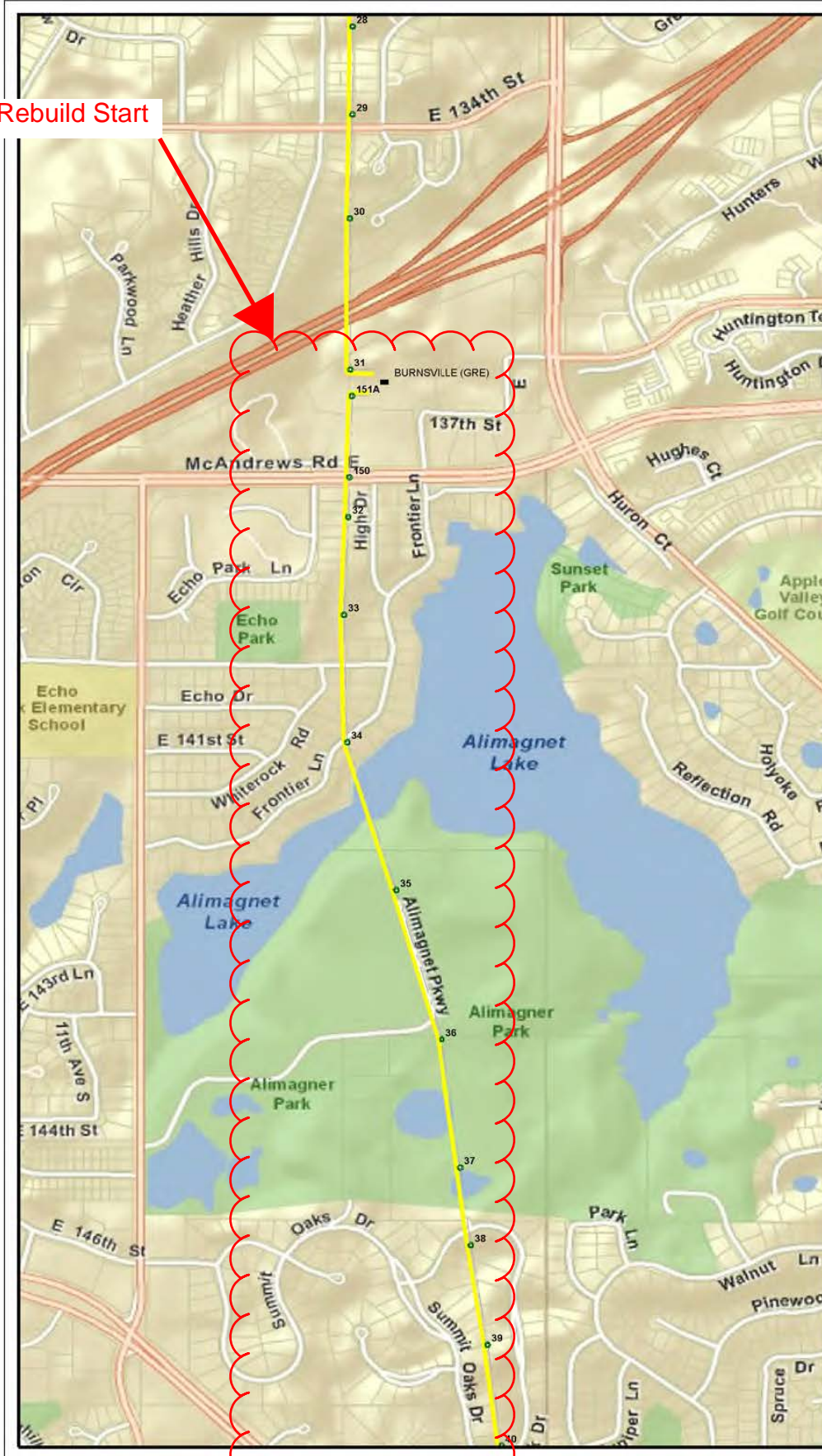
Date: 06/13/2012

CONFIDENTIAL. DO NOT COPY OR DISTRIBUTE TO OTHERS WITHOUT EXPRESS WRITTEN CONSENT FROM XCEL ENERGY.



DISCLAIMER: THERE ARE NO REPRESENTATIONS OR WARRANTIES (EXPRESS OR IMPLIED) ABOUT THE ACCURACY OF THIS PRINT. THIS PRINT IS PROVIDED WITH NO CLAIM AS TO PRINT COMPLETENESS, TIMELINESS, ACCURACY OF CONTENT OR USEFULNESS. STATE LAW REQUIRES ANYONE DIGGING, GRADING OR EXCAVATING TO OBTAIN A PRIOR FIELD LOCATE OF ALL UTILITIES. THIS PRINT DOES NOT DISCHARGE THIS REQUIREMENT OR ANY OTHER REQUIREMENT. THE COMPANY AND ITS AFFILIATES ASSUME NO LEGAL RESPONSIBILITY OR LIABILITY FOR THE RECIPIENT'S USE (OR ANY OTHER PARTIES' USE) OF THE PRINT, INCLUDING THE RECIPIENT'S INTENDED PURPOSE IN USING THE PRINT. NO COMPANY EMPLOYEE OR OTHER PARTY HAS BEEN AUTHORIZED TO PROVIDE THIS PRINT FOR PLANNING OR ESTIMATING PURPOSES. RELY ON THIS PRINT AT YOUR OWN RISK. BY ACCEPTING THIS PRINT, THE RECIPIENT & ANY OTHER PARTY RECEIVING A COPY OF THE PRINT ACKNOWLEDGES AND AGREES TO THIS DISCLAIMER. For All Field Locates Call 811

0832 Rebuild Start



Scale: 1" equals 1000'

Ad Hoc Map

THIS MAP/DOCUMENT IS A TOOL TO ASSIST EMPLOYEES IN THE PERFORMANCE OF THEIR JOBS. YOUR PERSONAL SAFETY IS PROVIDED FOR BY USING SAFETY PRACTICES, PROCEDURES AND EQUIPMENT AS DESCRIBED IN THE SAFETY TRAINING PROGRAMS, MANUALS AND SPARS.

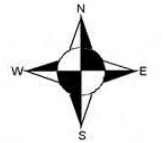
By: dbr99

Date: 06/13/2012

CONFIDENTIAL - DO NOT COPY OR DISTRIBUTE TO OTHERS WITHOUT EXPRESS WRITTEN CONSENT FROM XCEL ENERGY.



DISCLAIMER: THERE ARE NO REPRESENTATIONS OR WARRANTIES (EXPRESS OR IMPLIED) ABOUT THE ACCURACY OF THIS PRINT. THIS PRINT IS PROVIDED WITH NO CLAIM AS TO PRINT COMPLETENESS, TIMELINESS, ACCURACY OF CONTENT OR USEFULNESS. STATE LAW REQUIRES ANYONE DIGGING, GRADING OR EXCAVATING TO OBTAIN A PRIOR FIELD LOCATE OF ALL UTILITIES. THIS PRINT DOES NOT DISCHARGE THIS REQUIREMENT OR ANY OTHER REQUIREMENT. THE COMPANY AND ITS AFFILIATES ASSUME NO LEGAL RESPONSIBILITY OR LIABILITY FOR THE RECIPIENT'S USE (OR ANY OTHER PARTY'S USE) OF THE PRINT, INCLUDING THE RECIPIENT'S INTENDED PURPOSE IN USING THE PRINT. NO COMPANY EMPLOYEE OR OTHER PARTY HAS BEEN AUTHORIZED TO PROVIDE THIS PRINT FOR PLANNING OR ESTIMATING PURPOSES; RELY ON THIS PRINT AT YOUR OWN RISK. BY ACCEPTING THIS PRINT, THE RECIPIENT & ANY OTHER PARTY RECEIVING A COPY OF THE PRINT ACKNOWLEDGES AND AGREES TO THIS DISCLAIMER. For All Field Locates Call 811



Scale: 1" equals 1000'

Ad Hoc Map

THIS MAP/DOCUMENT IS A TOOL TO ASSIST EMPLOYEES IN THE PERFORMANCE OF THEIR JOBS. YOUR PERSONAL SAFETY IS PROVIDED FOR BY USING SAFETY PRACTICES, PROCEDURES AND EQUIPMENT AS DESCRIBED IN THE SAFETY TRAINING PROGRAMS, MANUALS AND SPARS.

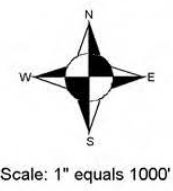
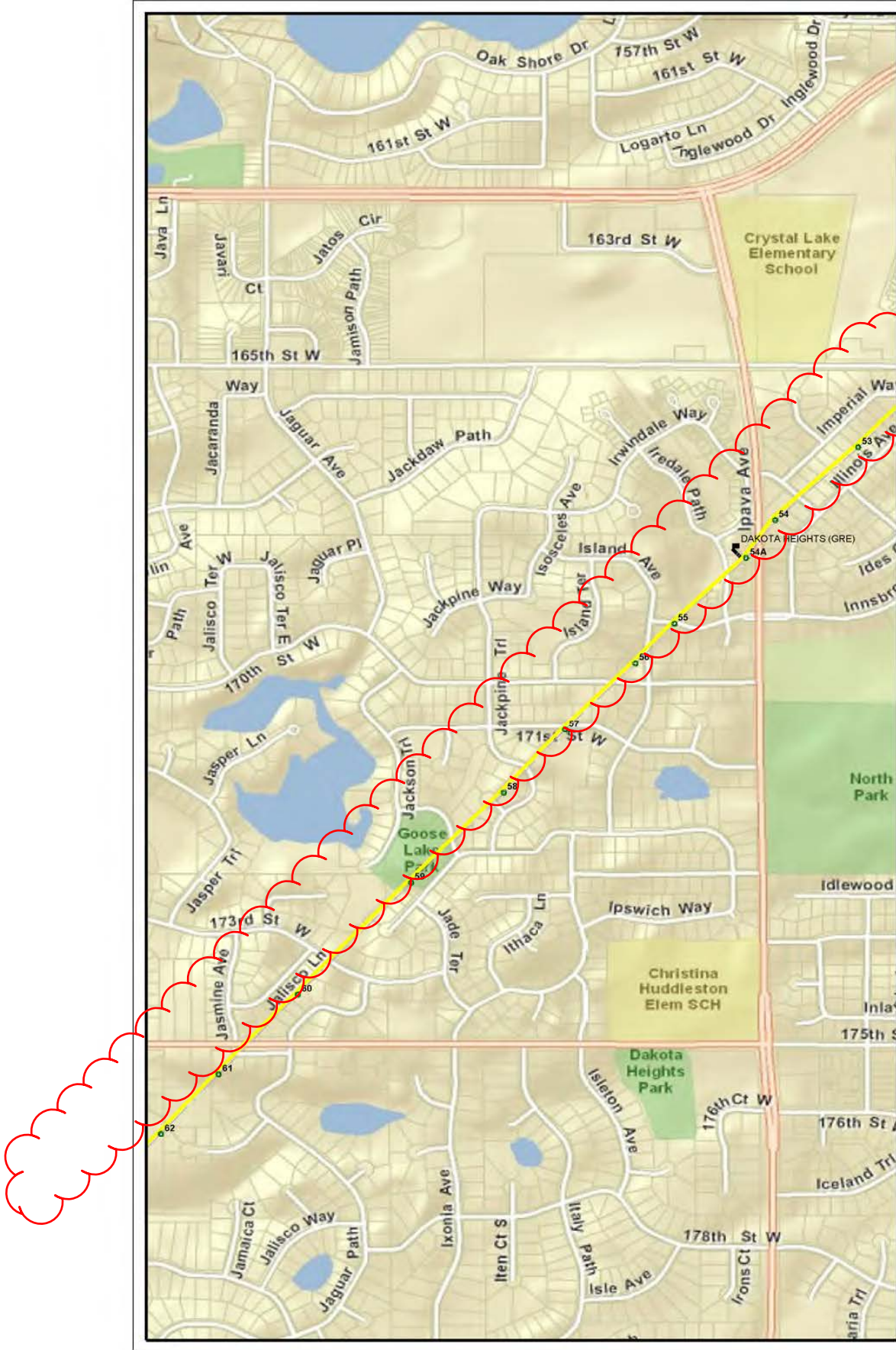
By: dbrc99

Date: 06/13/2012

CONFIDENTIAL. DO NOT COPY OR DISTRIBUTE TO OTHERS WITHOUT EXPRESS WRITTEN CONSENT FROM XCEL ENERGY.



DISCLAIMER: THERE ARE NO REPRESENTATIONS OR WARRANTIES (EXPRESS OR IMPLIED) ABOUT THE ACCURACY OF THIS PRINT. THIS PRINT IS PROVIDED WITH NO CLAIM AS TO PRINT COMPLETENESS, TIMELINESS, ACCURACY OF CONTENT OR USEFULNESS. STATE LAW REQUIRES ANYONE DIGGING, GRADING OR EXCAVATING TO OBTAIN A PRIOR FIELD LOCATE OF ALL UTILITIES. THIS PRINT DOES NOT DISCHARGE THIS REQUIREMENT OR ANY OTHER REQUIREMENT. THE COMPANY AND ITS AFFILIATES ASSUME NO LEGAL RESPONSIBILITY OR LIABILITY FOR THE RECIPIENT'S USE (OR ANY OTHER PARTY'S USE) OF THE PRINT, INCLUDING THE RECIPIENT'S INTENDED PURPOSE IN USING THE PRINT. NO COMPANY EMPLOYEE OR OTHER PARTY HAS BEEN AUTHORIZED TO PROVIDE THIS PRINT FOR PLANNING OR ESTIMATING PURPOSES. RELY ON THIS PRINT AT YOUR OWN RISK. BY ACCEPTING THIS PRINT, THE RECIPIENT & ANY OTHER PARTY RECEIVING A COPY OF THE PRINT ACKNOWLEDGES AND AGREES TO THIS DISCLAIMER. For All Field Locates Call 811



Ad Hoc Map

THIS MAP/DOCUMENT IS A TOOL TO ASSIST EMPLOYEES IN THE PERFORMANCE OF THEIR JOBS. YOUR PERSONAL SAFETY IS PROVIDED FOR BY USING SAFETY PRACTICES, PROCEDURES AND EQUIPMENT AS DESCRIBED IN THE SAFETY TRAINING PROGRAMS, MANUALS AND SPARS.

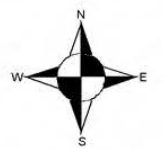
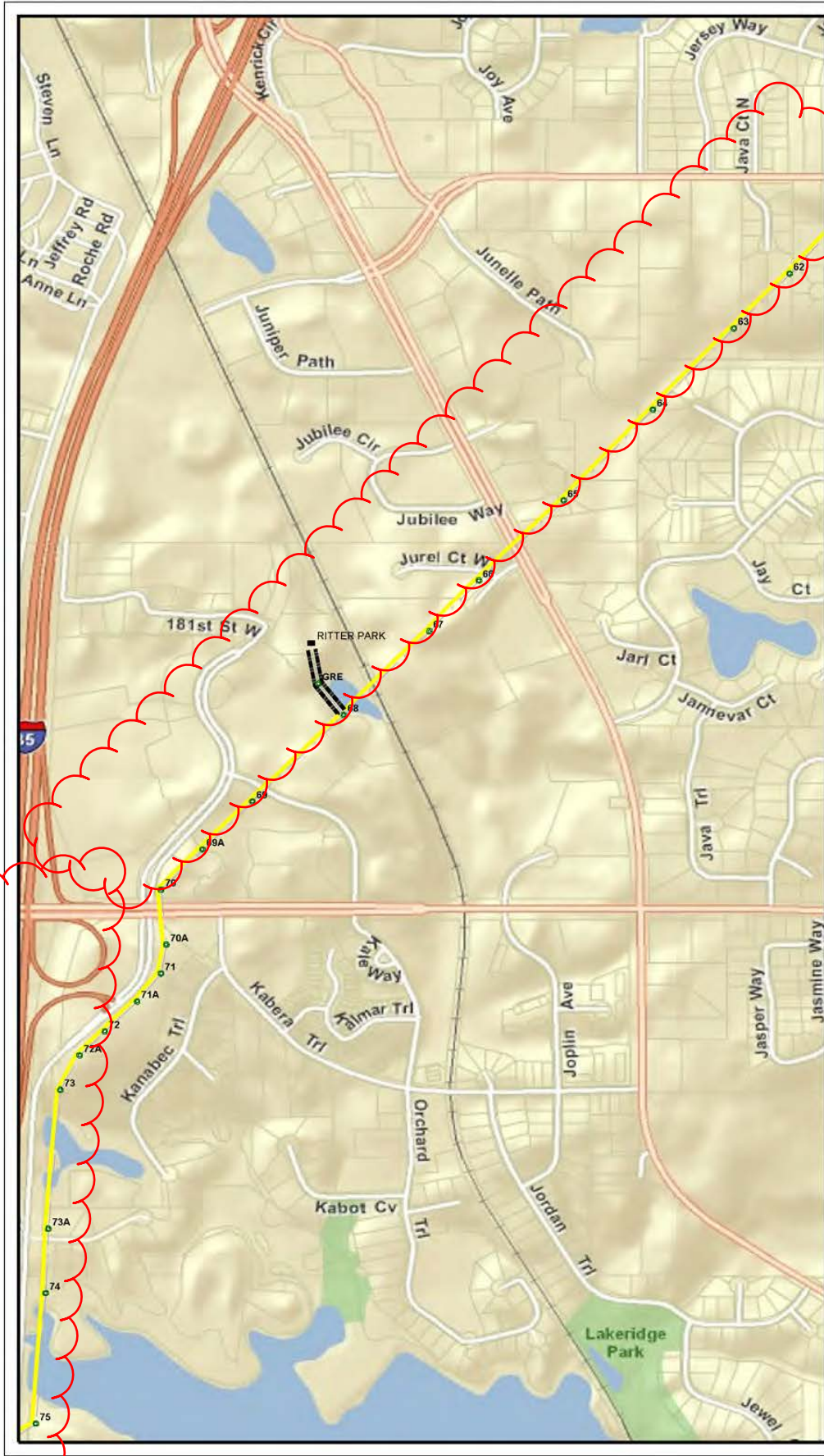
By: dbr99

Date: 06/13/2012

CONFIDENTIAL. DO NOT COPY OR DISTRIBUTE TO OTHERS WITHOUT EXPRESS WRITTEN CONSENT FROM XCEL ENERGY.



DISCLAIMER: THERE ARE NO REPRESENTATIONS OR WARRANTIES (EXPRESS OR IMPLIED) ABOUT THE ACCURACY OF THIS PRINT. THIS PRINT IS PROVIDED WITH NO CLAIM AS TO PRINT COMPLETENESS, TIMELINESS, ACCURACY OF CONTENT OR USEFULNESS. STATE LAW REQUIRES ANYONE DIGGING, GRADING OR EXCAVATING TO OBTAIN A PRIOR FIELD LOCATE OF ALL UTILITIES. THIS PRINT DOES NOT DISCHARGE THIS REQUIREMENT OR ANY OTHER REQUIREMENT. THE COMPANY AND ITS AFFILIATES ASSUME NO LEGAL RESPONSIBILITY OR LIABILITY FOR THE RECIPIENT'S USE (OR ANY OTHER PARTIES' USE) OF THE PRINT, INCLUDING THE RECIPIENT'S INTENDED PURPOSE IN USING THE PRINT. NO COMPANY EMPLOYEE OR OTHER PARTY HAS BEEN AUTHORIZED TO PROVIDE THIS PRINT FOR PLANNING OR ESTIMATING PURPOSES. RELY ON THIS PRINT AT YOUR OWN RISK. BY ACCEPTING THIS PRINT, THE RECIPIENT & ANY OTHER PARTY RECEIVING A COPY OF THE PRINT ACKNOWLEDGES AND AGREES TO THIS DISCLAIMER. For All Field Locates Call 811



Scale: 1" equals 1000'

Ad Hoc Map

THIS MAP/DOCUMENT IS A TOOL TO ASSIST EMPLOYEES IN THE PERFORMANCE OF THEIR JOBS. YOUR PERSONAL SAFETY IS PROVIDED FOR BY USING SAFETY PRACTICES, PROCEDURES AND EQUIPMENT AS DESCRIBED IN THE SAFETY TRAINING PROGRAMS, MANUALS AND SPARS.

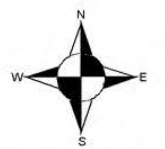
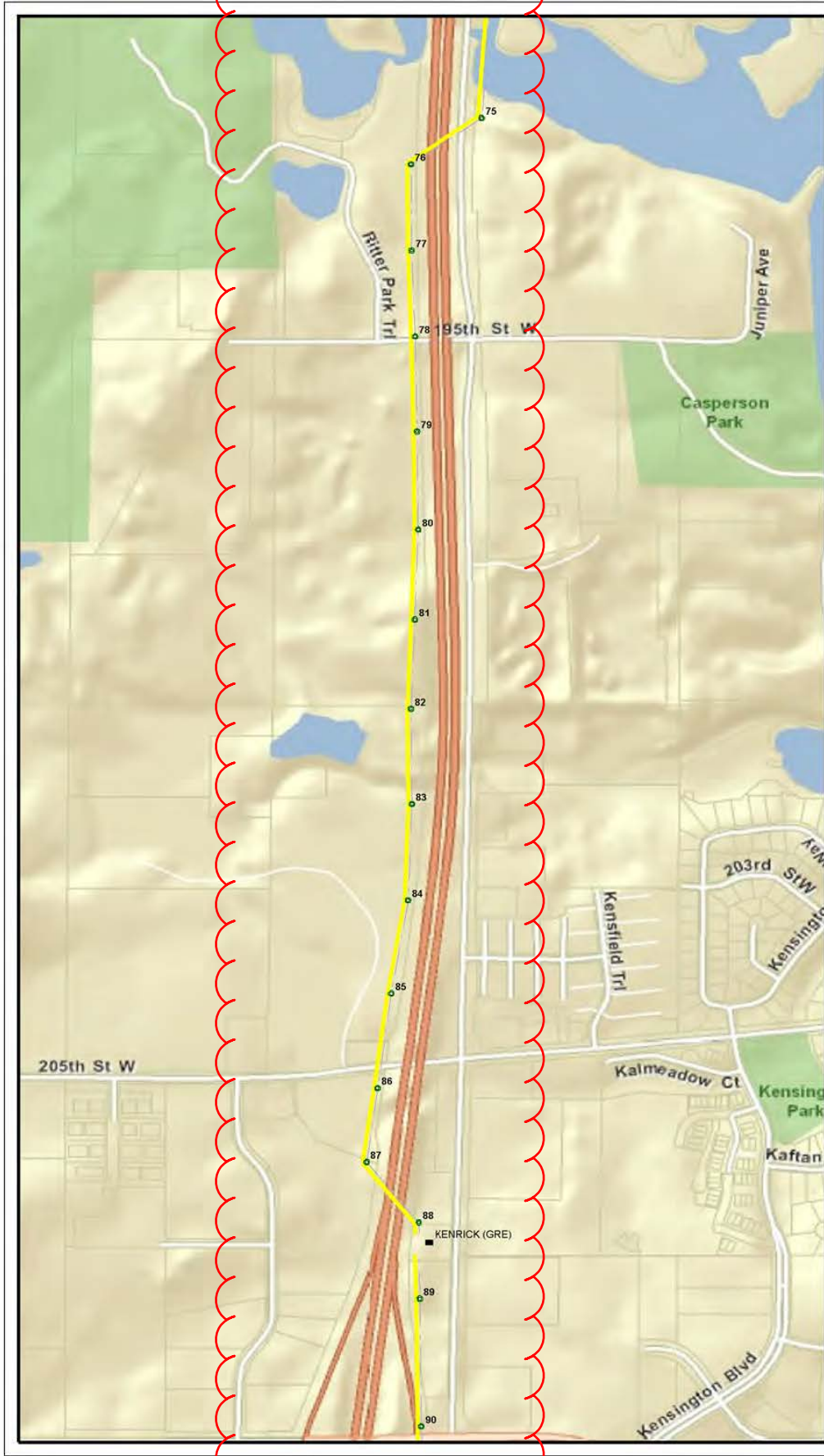
By: dbr99

Date: 06/13/2012

CONFIDENTIAL. DO NOT COPY OR DISTRIBUTE TO OTHERS WITHOUT EXPRESS WRITTEN CONSENT FROM XCEL ENERGY.



DISCLAIMER: THERE ARE NO REPRESENTATIONS OR WARRANTIES (EXPRESS OR IMPLIED) ABOUT THE ACCURACY OF THIS PRINT. THIS PRINT IS PROVIDED WITH NO CLAIM AS TO PRINT COMPLETENESS, TIMELINESS, ACCURACY OF CONTENT OR USEFULNESS. STATE LAW REQUIRES ANYONE DIGGING, GRADING OR EXCAVATING TO OBTAIN A PRIOR FIELD LOCATE OF ALL UTILITIES. THIS PRINT DOES NOT DISCHARGE THIS REQUIREMENT OR ANY OTHER REQUIREMENT. THE COMPANY AND ITS AFFILIATES ASSUME NO LEGAL RESPONSIBILITY OR LIABILITY FOR THE RECIPIENT'S USE (OR ANY OTHER PARTY'S USE) OF THE PRINT, INCLUDING THE RECIPIENT'S INTENDED PURPOSE IN USING THE PRINT. NO COMPANY EMPLOYEE OR OTHER PARTY HAS BEEN AUTHORIZED TO PROVIDE THIS PRINT FOR PLANNING OR ESTIMATING PURPOSES; RELY ON THIS PRINT AT YOUR OWN RISK. BY ACCEPTING THIS PRINT, THE RECIPIENT & ANY OTHER PARTY RECEIVING A COPY OF THE PRINT ACKNOWLEDGES AND AGREES TO THIS DISCLAIMER. For All Field Locates Call 811



Scale: 1" equals 1000'

Ad Hoc Map

THIS MAP/DOCUMENT IS A TOOL TO ASSIST EMPLOYEES IN THE PERFORMANCE OF THEIR JOBS. YOUR PERSONAL SAFETY IS PROVIDED FOR BY USING SAFETY PRACTICES, PROCEDURES AND EQUIPMENT AS DESCRIBED IN THE SAFETY TRAINING PROGRAMS, MANUALS AND SPARS.

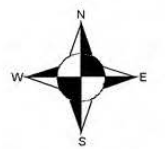
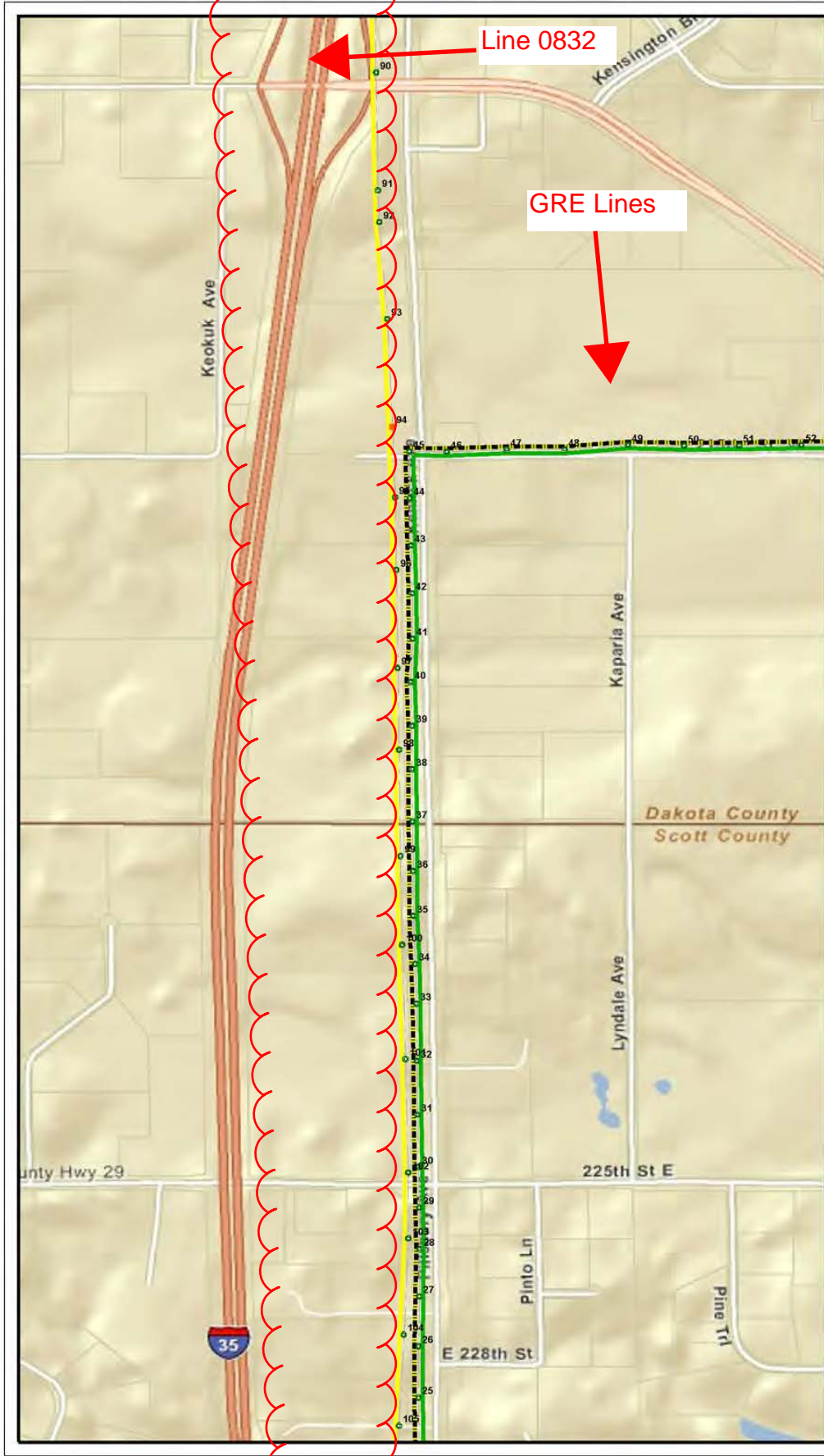
By: dbrc99

Date: 06/13/2012

CONFIDENTIAL. DO NOT COPY OR DISTRIBUTE TO OTHERS WITHOUT EXPRESS WRITTEN CONSENT FROM XCEL ENERGY.



DISCLAIMER: THERE ARE NO REPRESENTATIONS OR WARRANTIES (EXPRESS OR IMPLIED) ABOUT THE ACCURACY OF THIS PRINT. THIS PRINT IS PROVIDED WITH NO CLAIM AS TO PRINT COMPLETENESS, TIMELINESS, ACCURACY OF CONTENT OR USEFULNESS. STATE LAW REQUIRES ANYONE DIGGING, GRADING OR EXCAVATING TO OBTAIN A PRIOR FIELD LOCATE OF ALL UTILITIES. THIS PRINT DOES NOT DISCHARGE THIS REQUIREMENT OR ANY OTHER REQUIREMENT. THE COMPANY AND ITS AFFILIATES ASSUME NO LEGAL RESPONSIBILITY OR LIABILITY FOR THE RECIPIENT'S USE (OR ANY OTHER PARTY'S USE) OF THE PRINT, INCLUDING THE RECIPIENT'S INTENDED PURPOSE IN USING THE PRINT. NO COMPANY EMPLOYEE OR OTHER PARTY HAS BEEN AUTHORIZED TO PROVIDE THIS PRINT FOR PLANNING OR ESTIMATING PURPOSES; RELY ON THIS PRINT AT YOUR OWN RISK. BY ACCEPTING THIS PRINT, THE RECIPIENT & ANY OTHER PARTY RECEIVING A COPY OF THE PRINT ACKNOWLEDGES AND AGREES TO THIS DISCLAIMER. For All Field Locates Call 811



Scale: 1" equals 1000'

Ad Hoc Map

THIS MAP/DOCUMENT IS A TOOL TO ASSIST EMPLOYEES IN THE PERFORMANCE OF THEIR JOBS. YOUR PERSONAL SAFETY IS PROVIDED FOR BY USING SAFETY PRACTICES, PROCEDURES AND EQUIPMENT AS DESCRIBED IN THE SAFETY TRAINING PROGRAMS, MANUALS AND SPARS.

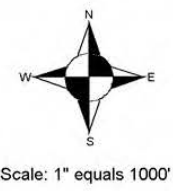
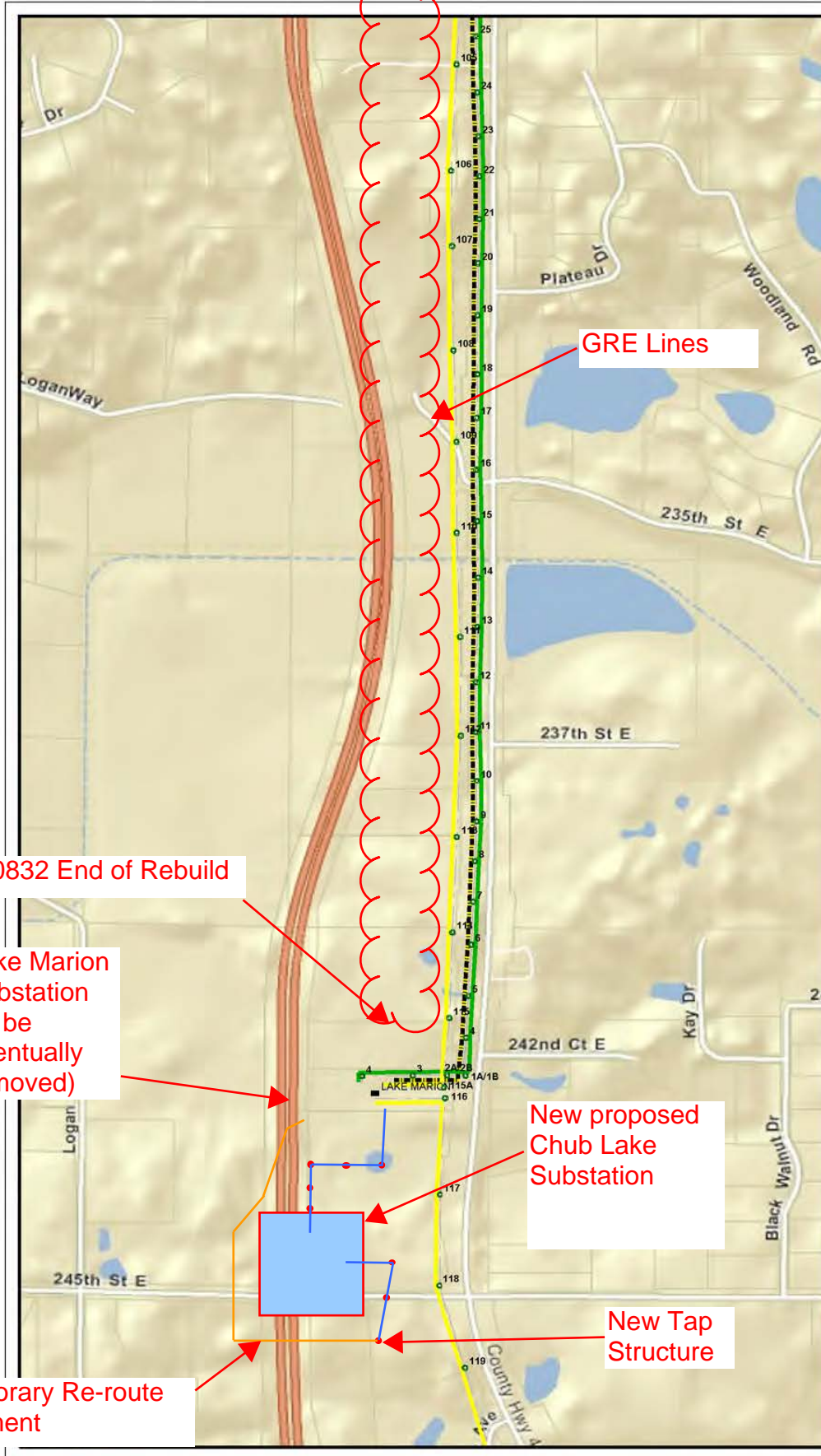
By: dbr99

Date: 06/13/2012

CONFIDENTIAL. DO NOT COPY OR DISTRIBUTE TO OTHERS WITHOUT EXPRESS WRITTEN CONSENT FROM XCEL ENERGY.



DISCLAIMER: THERE ARE NO REPRESENTATIONS OR WARRANTIES (EXPRESS OR IMPLIED) ABOUT THE ACCURACY OF THIS PRINT. THIS PRINT IS PROVIDED WITH NO CLAIM AS TO PRINT COMPLETENESS, TIMELINESS, ACCURACY OF CONTENT OR USEFULNESS. STATE LAW REQUIRES ANYONE DIGGING, GRADING OR EXCAVATING TO OBTAIN A PRIOR FIELD LOCATE OF ALL UTILITIES. THIS PRINT DOES NOT DISCHARGE THIS REQUIREMENT OR ANY OTHER REQUIREMENT. THE COMPANY AND ITS AFFILIATES ASSUME NO LEGAL RESPONSIBILITY OR LIABILITY FOR THE RECIPIENT'S USE (OR ANY OTHER PARTIES' USE) OF THE PRINT, INCLUDING THE RECIPIENT'S INTENDED PURPOSE IN USING THE PRINT. NO COMPANY EMPLOYEE OR OTHER PARTY HAS BEEN AUTHORIZED TO PROVIDE THIS PRINT FOR PLANNING OR ESTIMATING PURPOSES. RELY ON THIS PRINT AT YOUR OWN RISK. BY ACCEPTING THIS PRINT, THE RECIPIENT & ANY OTHER PARTY RECEIVING A COPY OF THE PRINT ACKNOWLEDGES AND AGREES TO THIS DISCLAIMER. For All Field Locates Call 811



GRE Lines

0832 End of Rebuild

Lake Marion Substation (to be eventually removed)

New proposed Chub Lake Substation

Temporary Re-route alignment

New Tap Structure

Ad Hoc Map

THIS MAP/DOCUMENT IS A TOOL TO ASSIST EMPLOYEES IN THE PERFORMANCE OF THEIR JOBS. YOUR PERSONAL SAFETY IS PROVIDED FOR BY USING SAFETY PRACTICES, PROCEDURES AND EQUIPMENT AS DESCRIBED IN THE SAFETY TRAINING PROGRAMS, MANUALS AND SPARS.

By: dbrc99

Date: 06/13/2012

CONFIDENTIAL. DO NOT COPY OR DISTRIBUTE TO OTHERS WITHOUT EXPRESS WRITTEN CONSENT FROM XCEL ENERGY.



DISCLAIMER: THERE ARE NO REPRESENTATIONS OR WARRANTIES (EXPRESS OR IMPLIED) ABOUT THE ACCURACY OF THIS PRINT. THIS PRINT IS PROVIDED WITH NO CLAIM AS TO PRINT COMPLETENESS, TIMELINESS, ACCURACY OF CONTENT OR USEFULNESS. STATE LAW REQUIRES ANYONE DIGGING, GRADING OR EXCAVATING TO OBTAIN A PRIOR FIELD LOCATE OF ALL UTILITIES. THIS PRINT DOES NOT DISCHARGE THIS REQUIREMENT OR ANY OTHER REQUIREMENT. THE COMPANY AND ITS AFFILIATES ASSUME NO LEGAL RESPONSIBILITY OR LIABILITY FOR THE RECIPIENT'S USE (OR ANY OTHER PARTIES' USE) OF THE PRINT, INCLUDING THE RECIPIENT'S INTENDED PURPOSE IN USING THE PRINT. NO COMPANY EMPLOYEE OR OTHER PARTY HAS BEEN AUTHORIZED TO PROVIDE THIS PRINT FOR PLANNING OR ESTIMATING PURPOSES. RELY ON THIS PRINT AT YOUR OWN RISK. BY ACCEPTING THIS PRINT, THE RECIPIENT & ANY OTHER PARTY RECEIVING A COPY OF THE PRINT ACKNOWLEDGES AND AGREES TO THIS DISCLAIMER. For All Field Locates Call 811