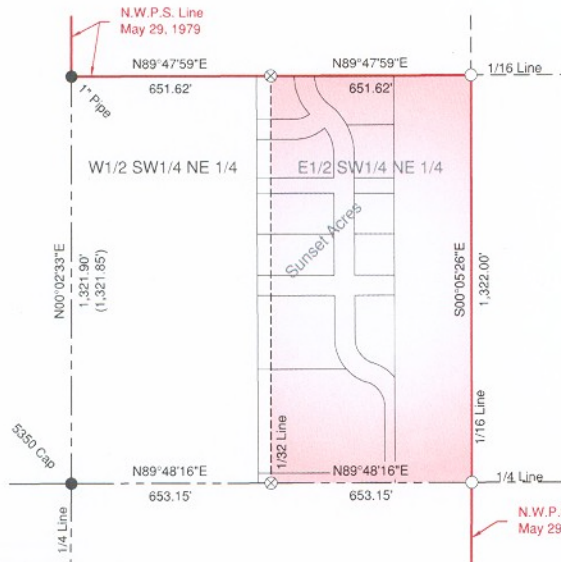
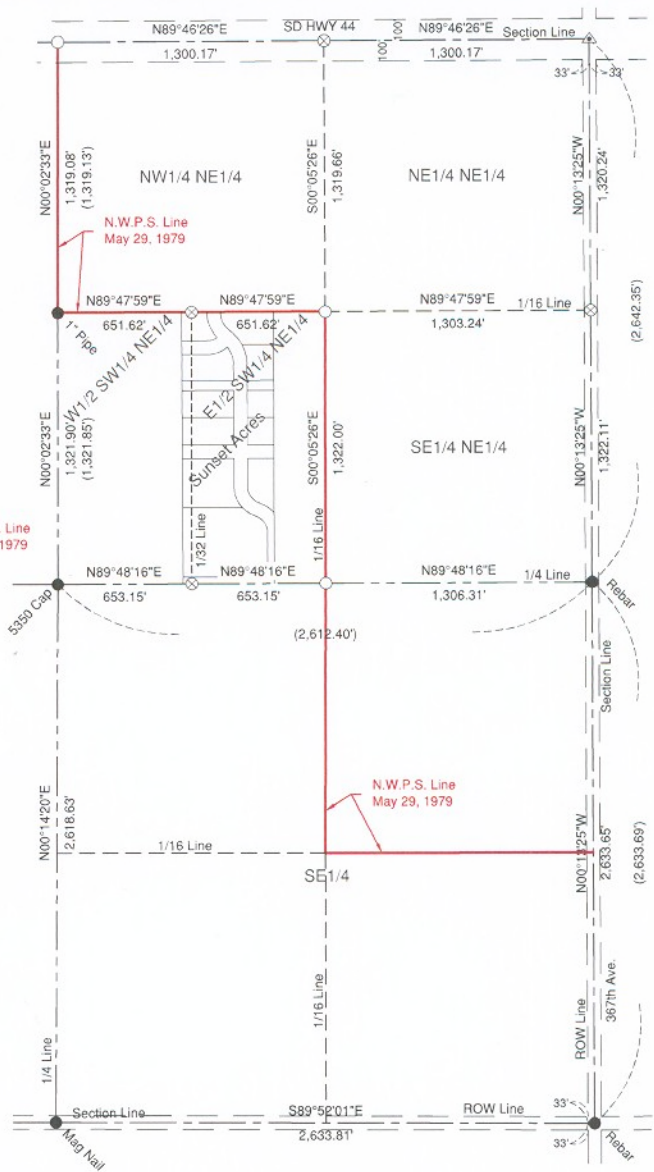


Petitioner's Claim (4A) Detail
Scale = 1" = 400'



Northwestern Energy Claim (4B) Detail
Scale = 1" = 400'



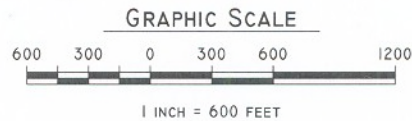
E 1/2 of Section 23, T 99 N, R 68 W
Charles Mix County, South Dakota

Legend

- Found Property Corner - As Noted
- Set 5/8" x 18" Rebar w/Cap Stamped "KENNEDY LS 5350"
- ⊗ Computed Corner
- ⚡ Inaccessible Corner
- (2,633.69') Recorded Distance in Feet



Basis of Bearing
Geodetic North



Surveyor's Certificate

I, Brett R. Kennedy, a Licensed Land Surveyor in the State of South Dakota, at the request of Charles Mix Electric Associates, Inc., did on or before March 21, 2013, complete a survey of the E 1/2, Section 23, Township 99 North, Range 68 West of the 5th P.M. Charles Mix County, South Dakota.

This Certificate is to the best of my knowledge and belief a true description of said survey. I hereby certify that this survey was performed by me or under my direct supervision, and I have executed this document this 28th day of March, 2013.



Brett R. Kennedy
Brett R. Kennedy LS #5350

EXHIBIT A

Sheet 1 of 1
JF# Y13121
CC: Tim L. Gobel, L.S.I.T.
DWG: Chris A. Gadeken, C.S.T.
CK BY: Brett R. Kennedy, L.S.

Prepared By
Eisenbraun & Associates
Professional Engineers & Surveyors
Innovative Solutions - Long Term Value
215 Walnut
Yankton, South Dakota 57078
605-665-8092
FAX 605-665-0523
www.eaweb.com