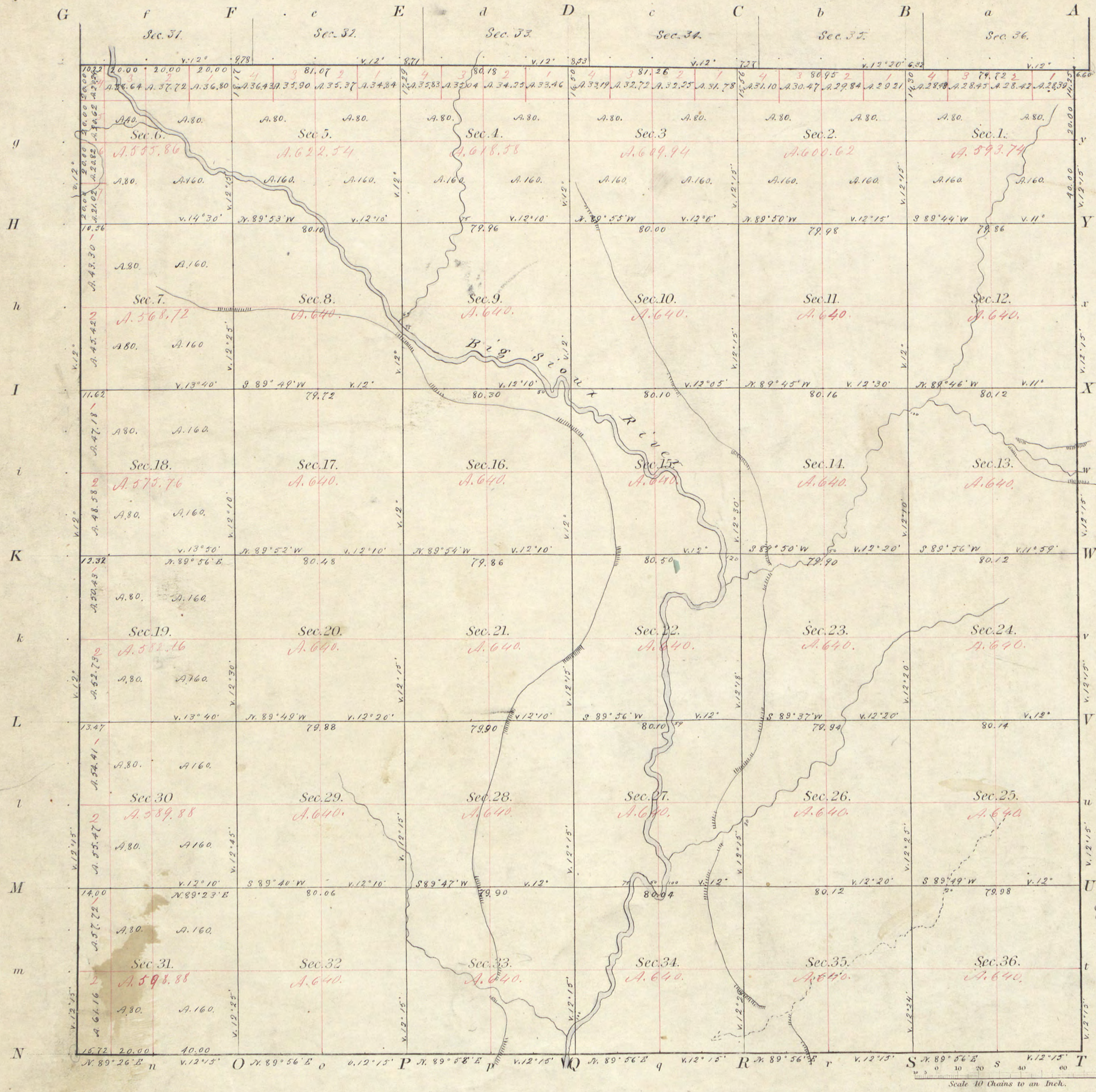


TOWNSHIP N^o 116 North RANGE N^o 52 West of the 5th Principal MERIDIAN

SOUTH DAKOTA

Read with Letter of Sur. Gen. dated Feb. 6. 1873.

Plat. Repit 23763



Meanders of								
Posts	Courses	Ch ^o Ik ^s	Posts	Courses	Ch ^o Ik ^s	Posts	Courses	Ch ^o Ik ^s

Duplicate plat filed in local office Sept. 1. 1873.

122112
PB

Total number of Acres. 22 516.68

Surveys Designated	By Whom Surveyed	Date of Contract	Amount of Surveys	When Surveyed
Township lines	Miles T. Woolley	July 5th 1872	$\frac{3}{4}$ Ch ^o $\frac{6}{37}$ Ik ^s	Aug & Sept 1872
Subdivisions	VanAntwerp & Blanning	July 22d 1872	$\frac{59}{65}$ $\frac{62}{62}$	Sept. 30 to Oct. 2d inclusive 1872

The above Map of Township N^o 116 North of Range N^o 52 West of the 5th Principal Meridian South Dakota Territory is strictly conformable to the field notes of the survey thereof on file in this Office, which have been examined and approved.

Surveyor General's Office,
 Yankton D.T. Feb 5th 1873.

Wm. H. Brown
 Sur. Gen.

