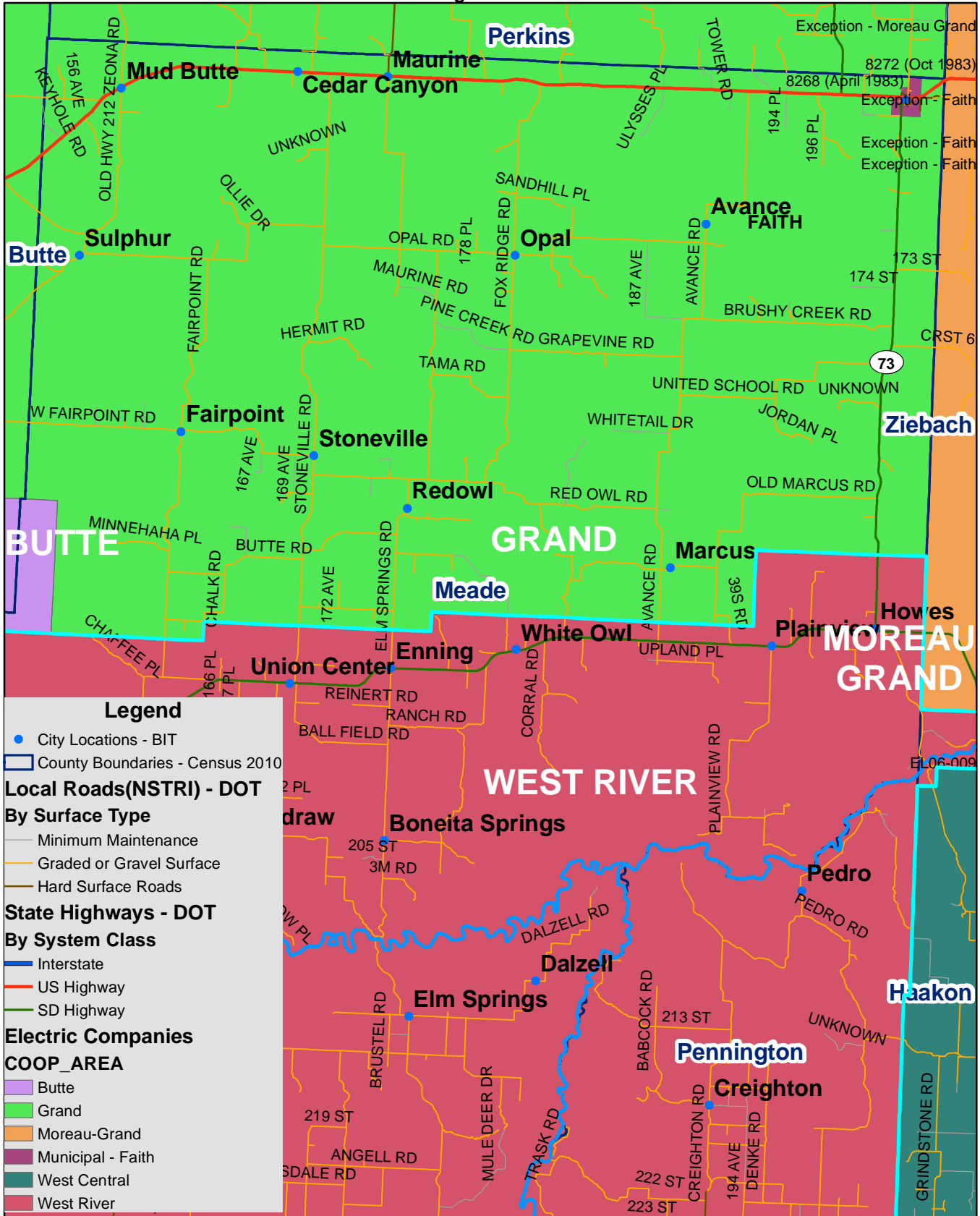


# Exhibit B

## Grand & West River Electric Service Boundary

Page 1 of 11

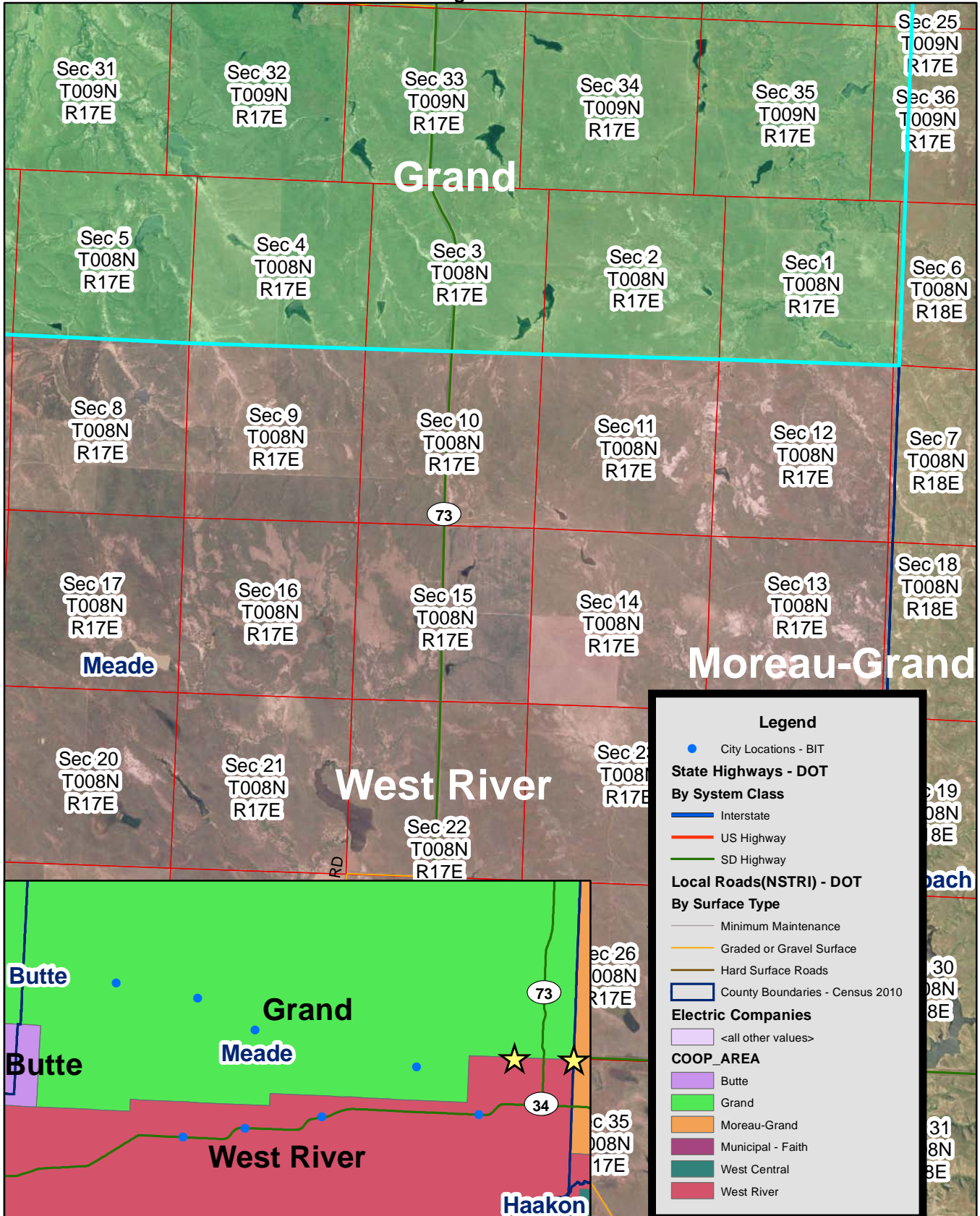


# Exhibit B

## Grand & West River Electric Service Boundary

Section 6 of T8N, R18E

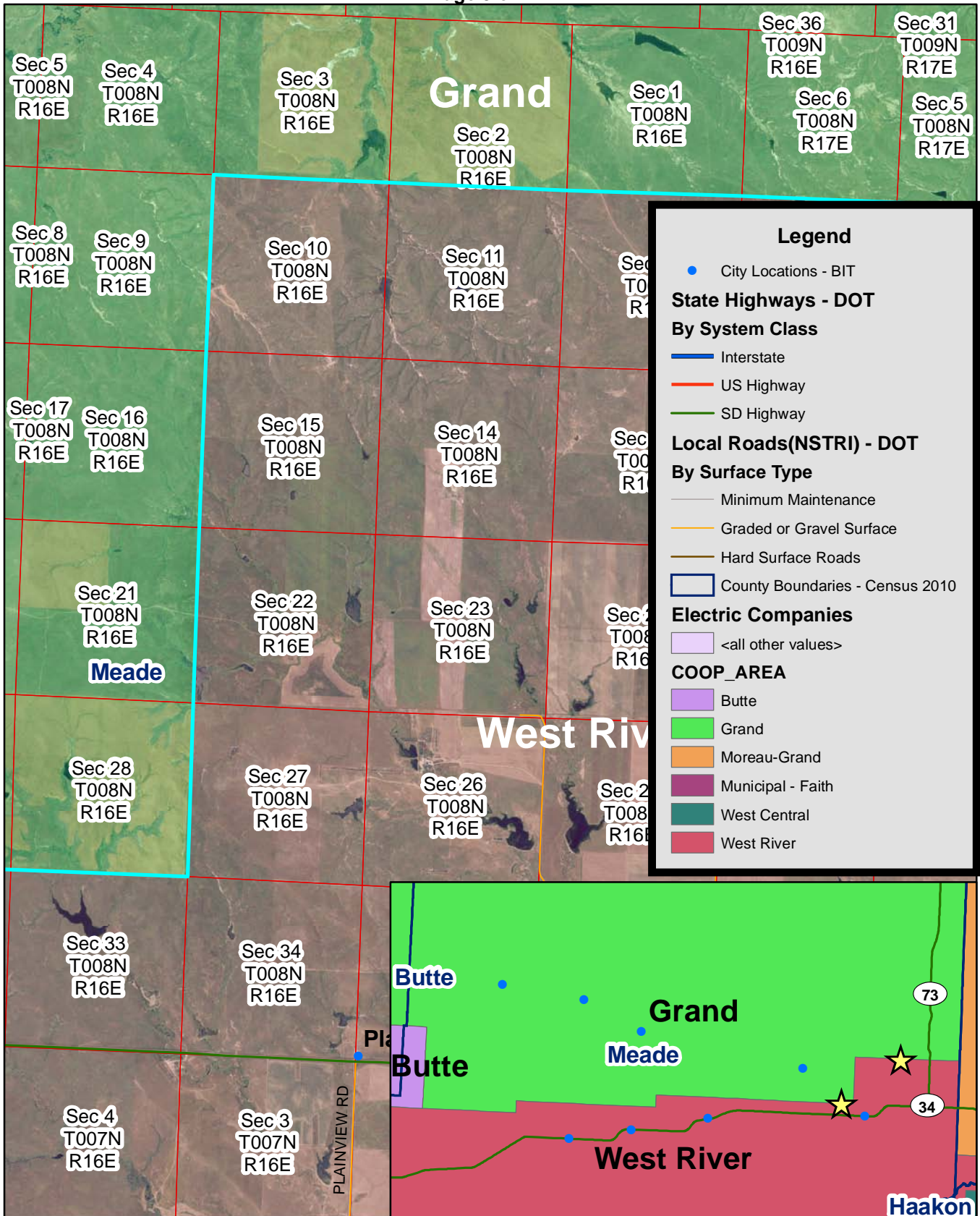
Page 2 of 11





# Exhibit B

Grand & West River Electric Service Boundary  
 Section 10 & Section 27 of T8N, R16E  
 Page 3 of 11



**Legend**

- City Locations - BIT
- State Highways - DOT**
- By System Class**
- Interstate
- US Highway
- SD Highway
- Local Roads(NSTRI) - DOT**
- By Surface Type**
- Minimum Maintenance
- Graded or Gravel Surface
- Hard Surface Roads
- County Boundaries - Census 2010
- Electric Companies**
- <all other values>
- COOP\_AREA**
- Butte
- Grand
- Moreau-Grand
- Municipal - Faith
- West Central
- West River



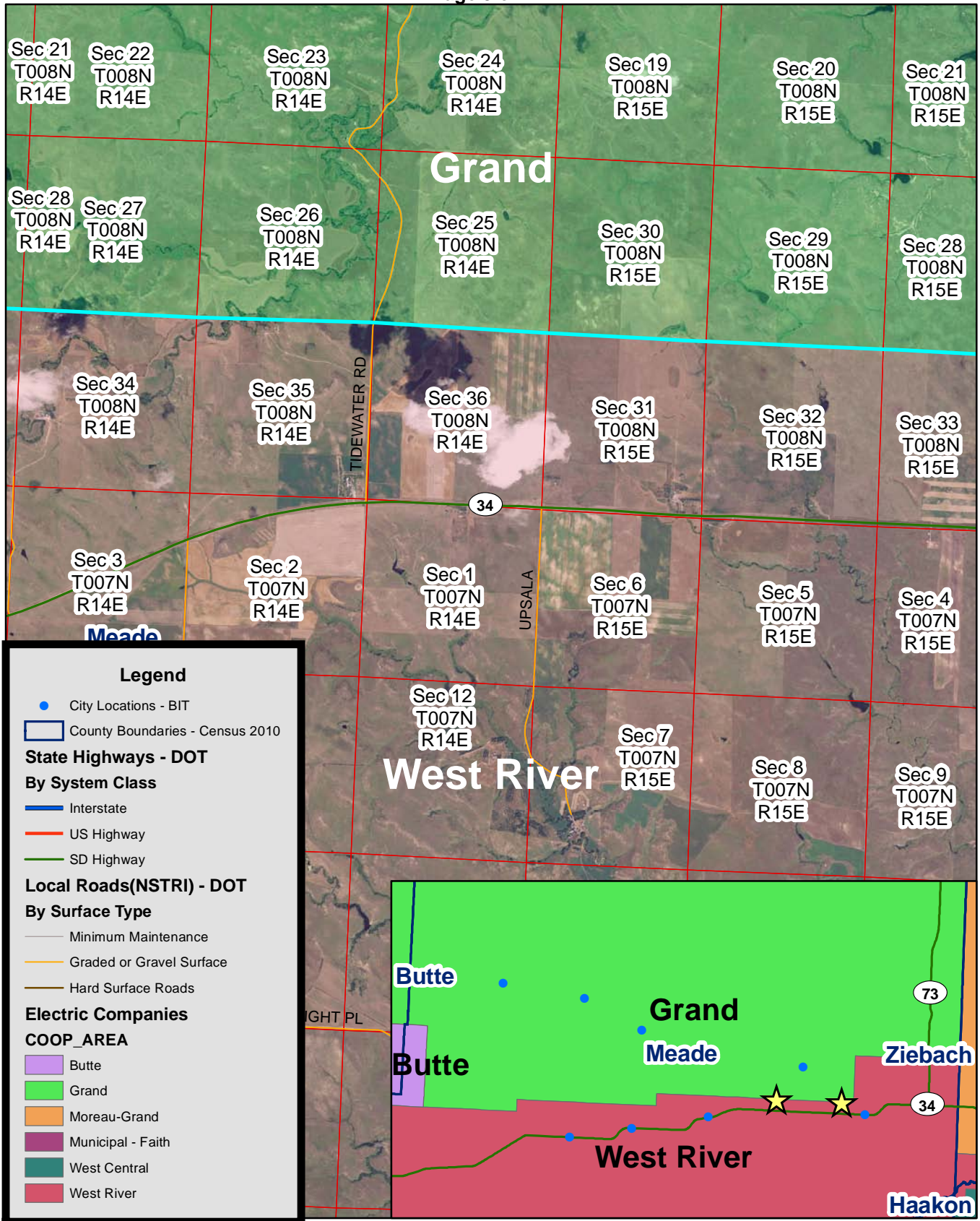


# Exhibit B

## Grand & West River Electric Service Boundary

Highway 34

Page 5 of 11

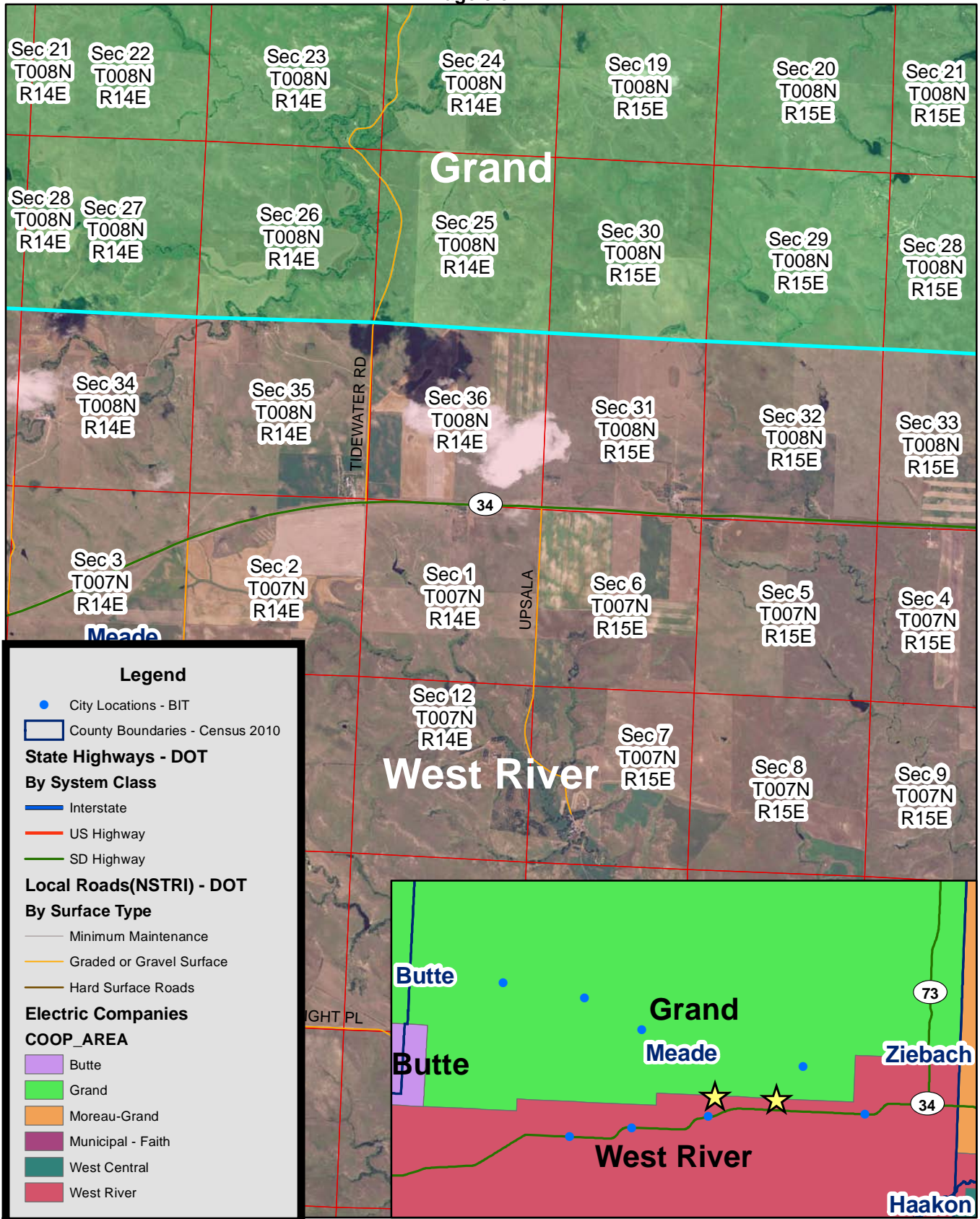


### Legend

- City Locations - BIT
- ▭ County Boundaries - Census 2010
- State Highways - DOT**
- By System Class**
- Interstate
- US Highway
- SD Highway
- Local Roads(NSTRI) - DOT**
- By Surface Type**
- Minimum Maintenance
- Graded or Gravel Surface
- Hard Surface Roads
- Electric Companies**
- COOP\_AREA**
- ▭ Butte
- ▭ Grand
- ▭ Moreau-Grand
- ▭ Municipal - Faith
- ▭ West Central
- ▭ West River

# Exhibit B

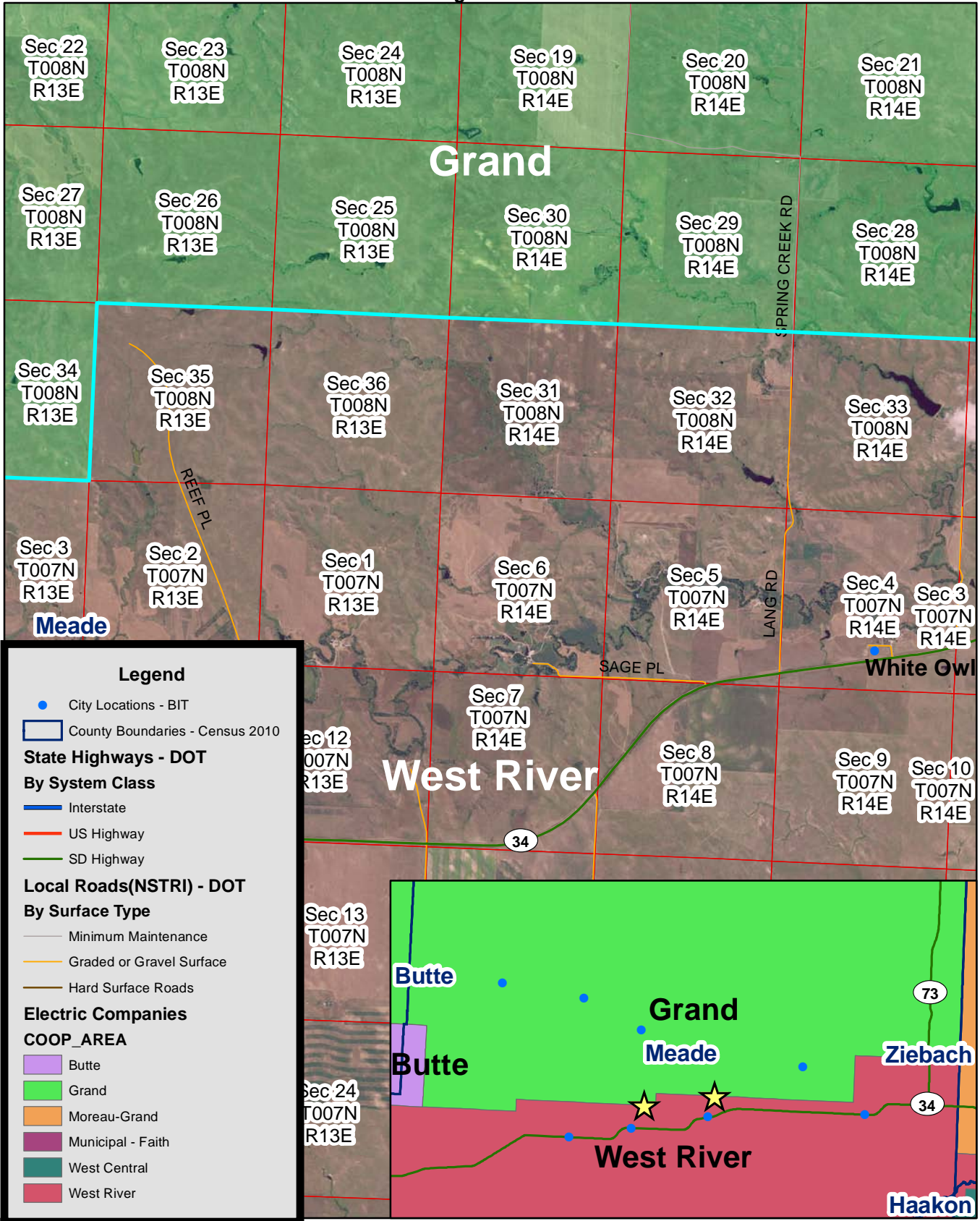
## Grand & West River Electric Service Boundary Highway 34 - White Owl Page 6 of 11





# Exhibit B

Grand & West River Electric Service Boundary  
 Section 35, T8N, R13E - White Owl area  
 Page 7 of 11

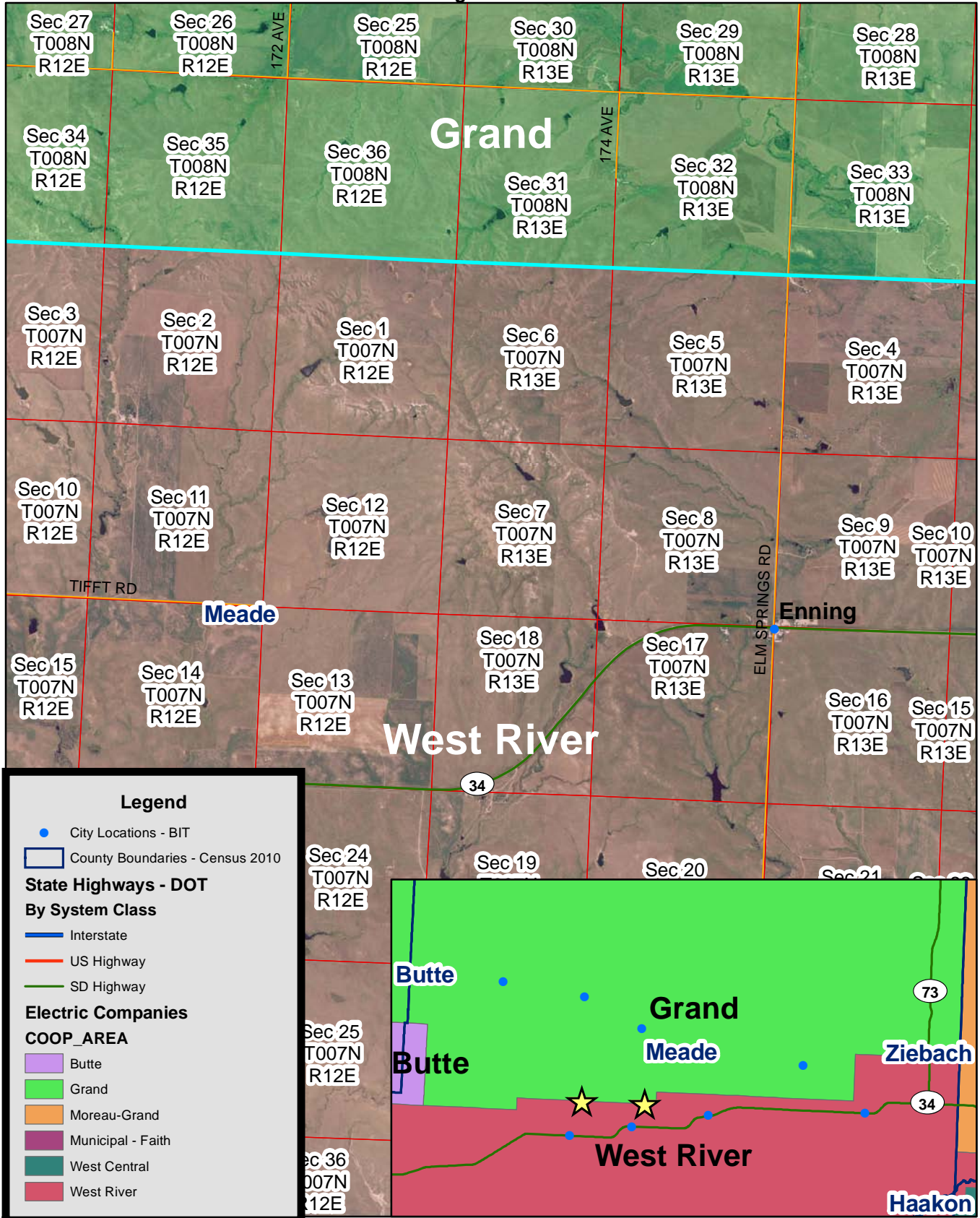


# Exhibit B

## Grand & West River Electric Service Boundary

Enning area

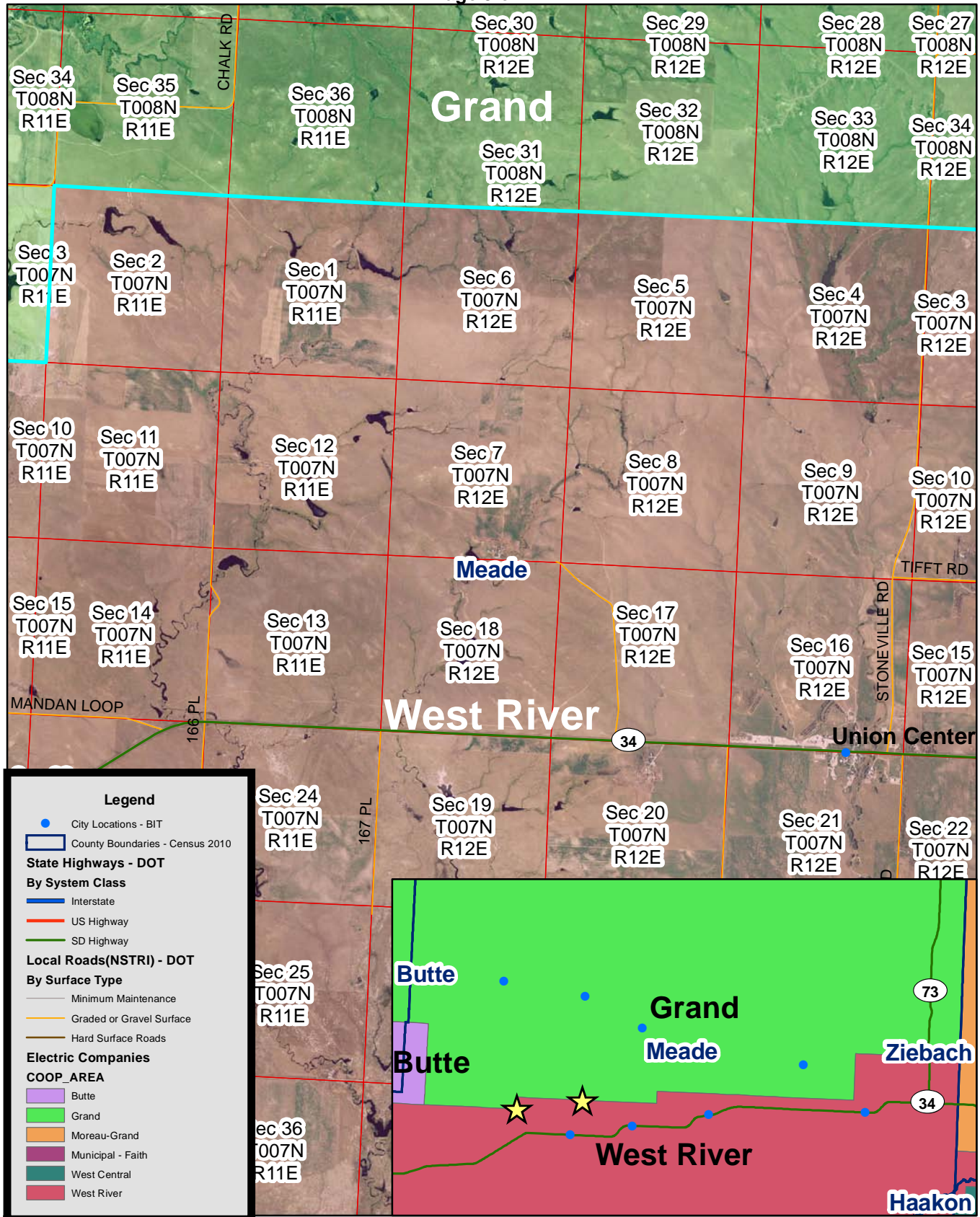
Page 8 of 11





# Exhibit B

## Grand & West River Electric Service Boundary Union Center area Page 9 of 11

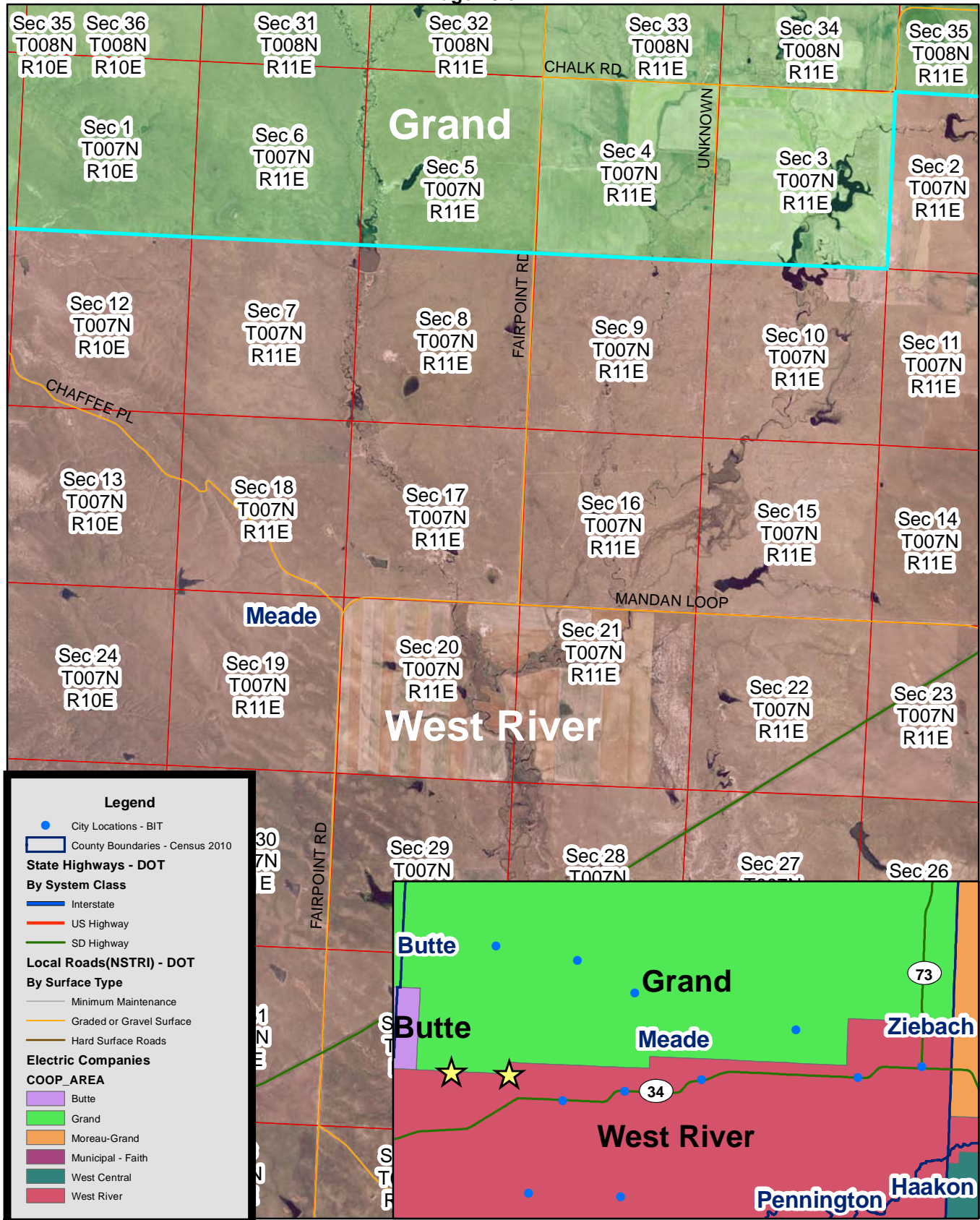


# Exhibit B

## Grand & West River Electric Service Boundary

Section 2, T7N, R11E

Page 10 of 11





# Exhibit B

## Grand & West River Electric Service Boundary

Section 9, T7N, R10E

Page 11 of 11

