

Exhibit B

Page 1 of 6

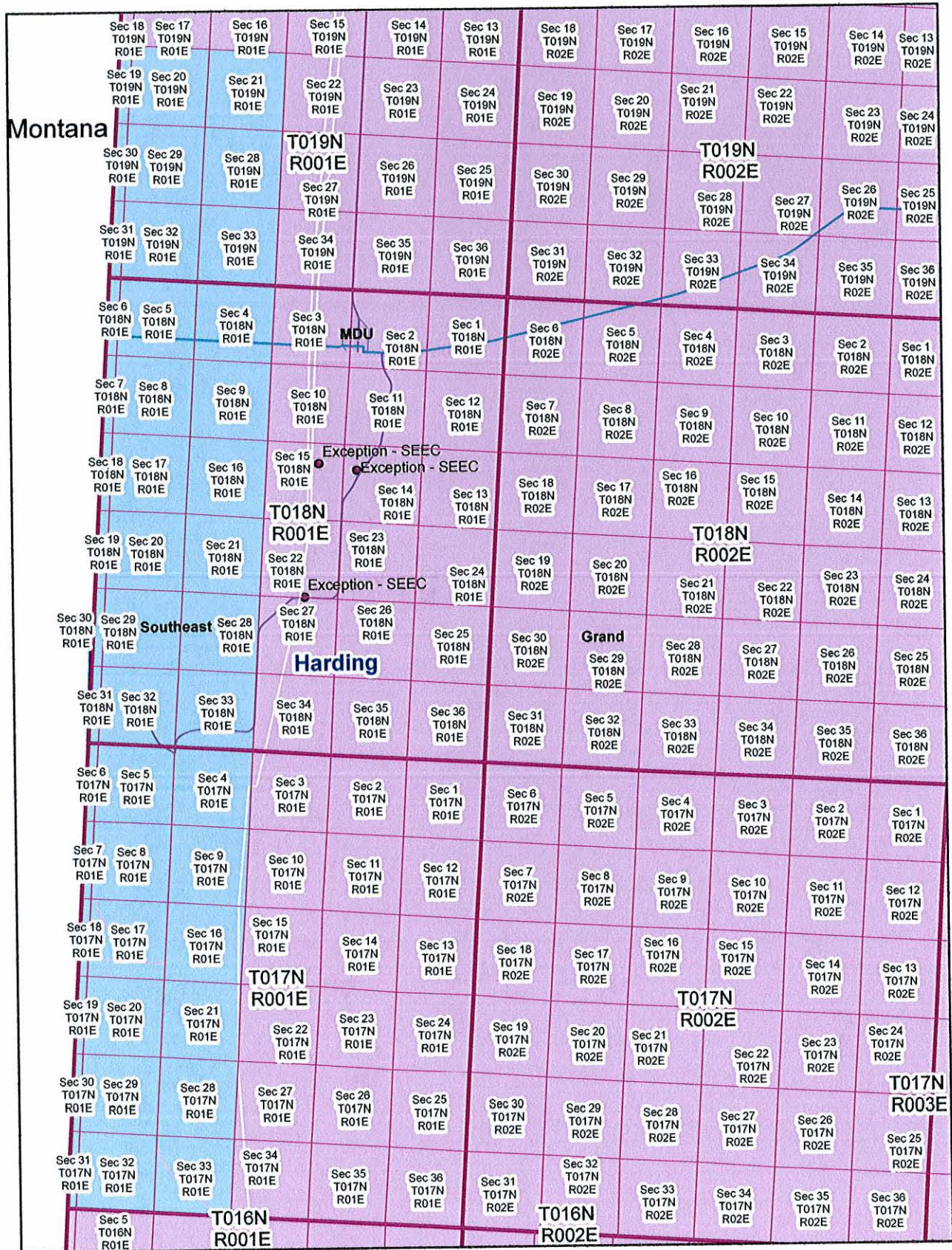


Exhibit B

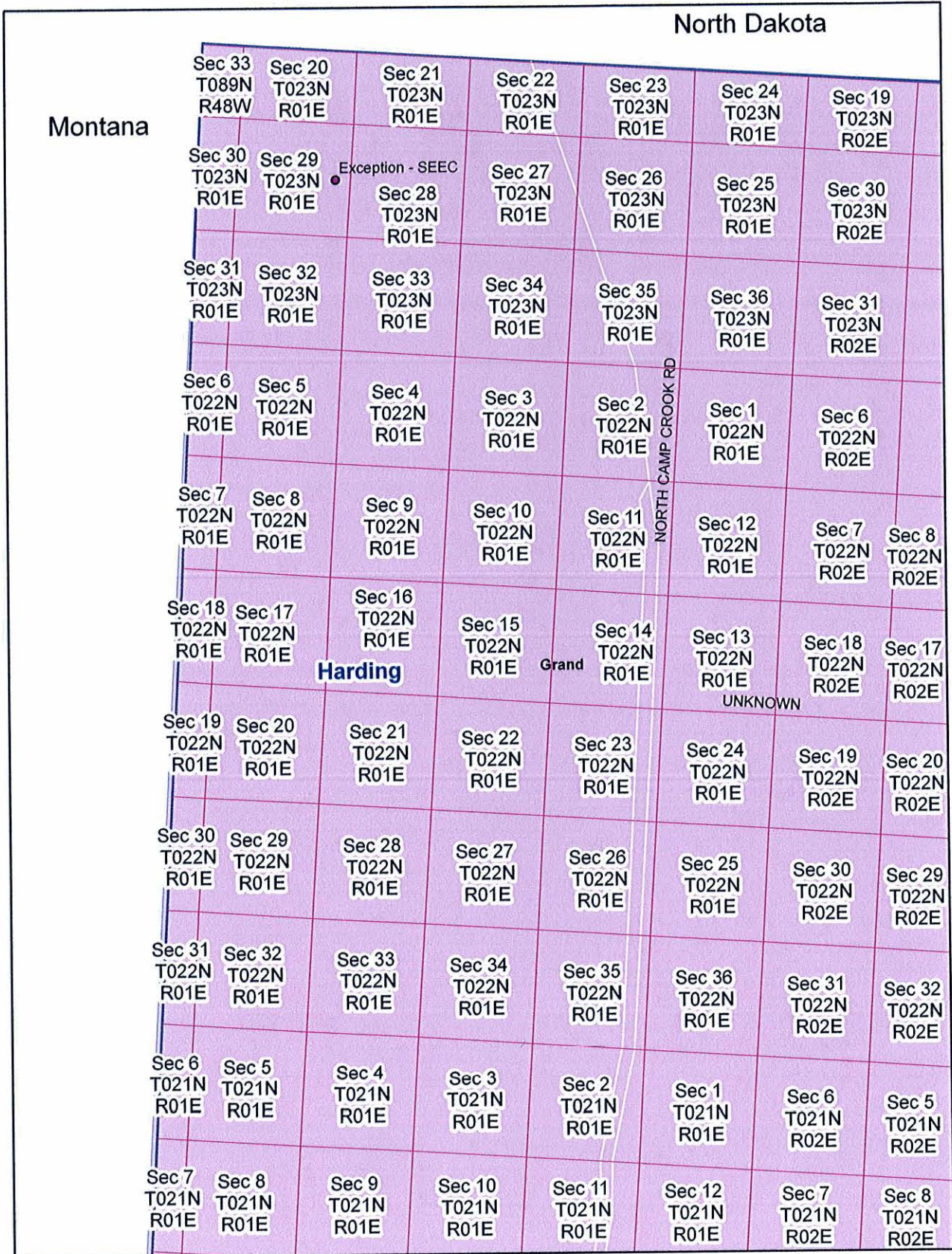


Exhibit B

Page 3 of 6

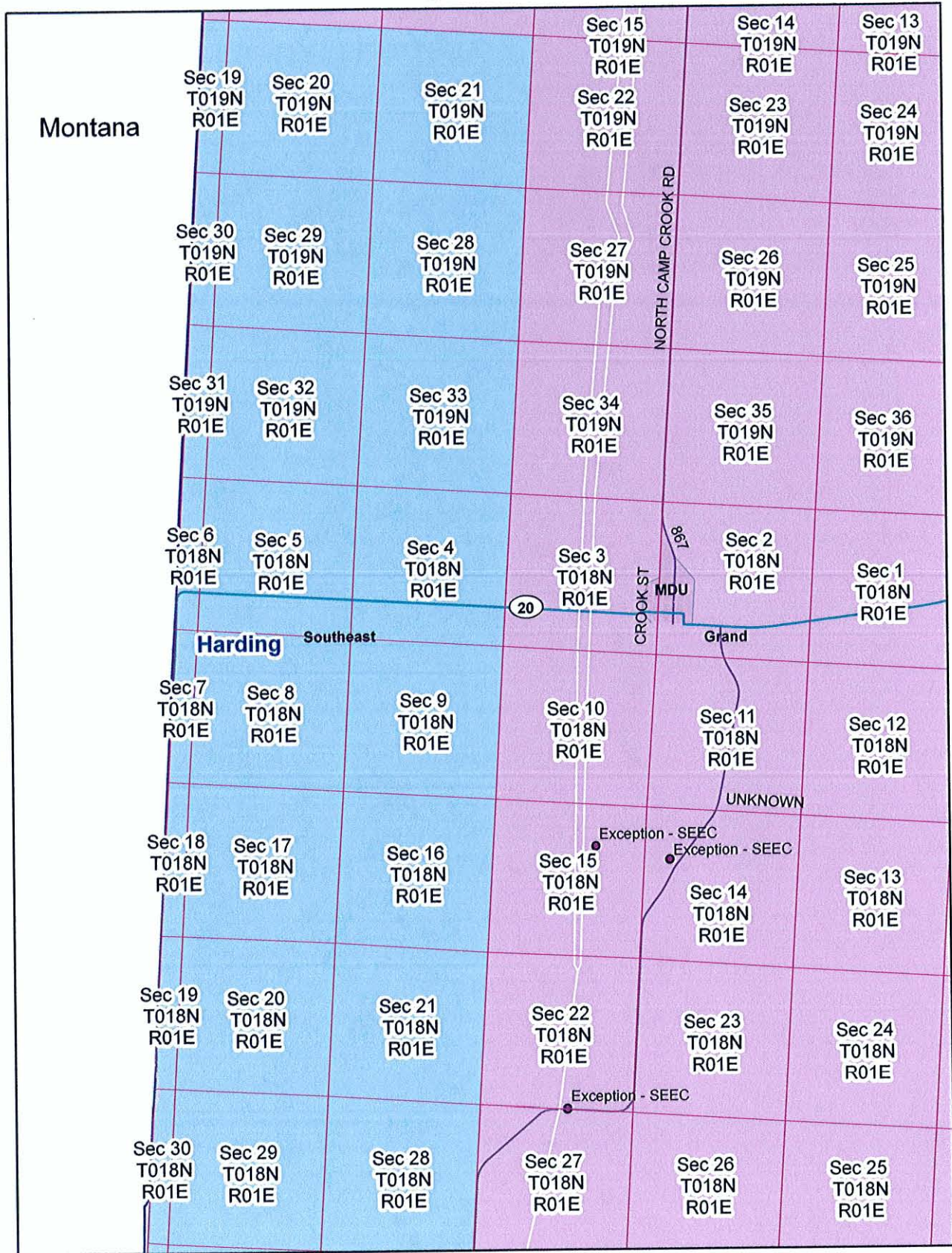


Exhibit B

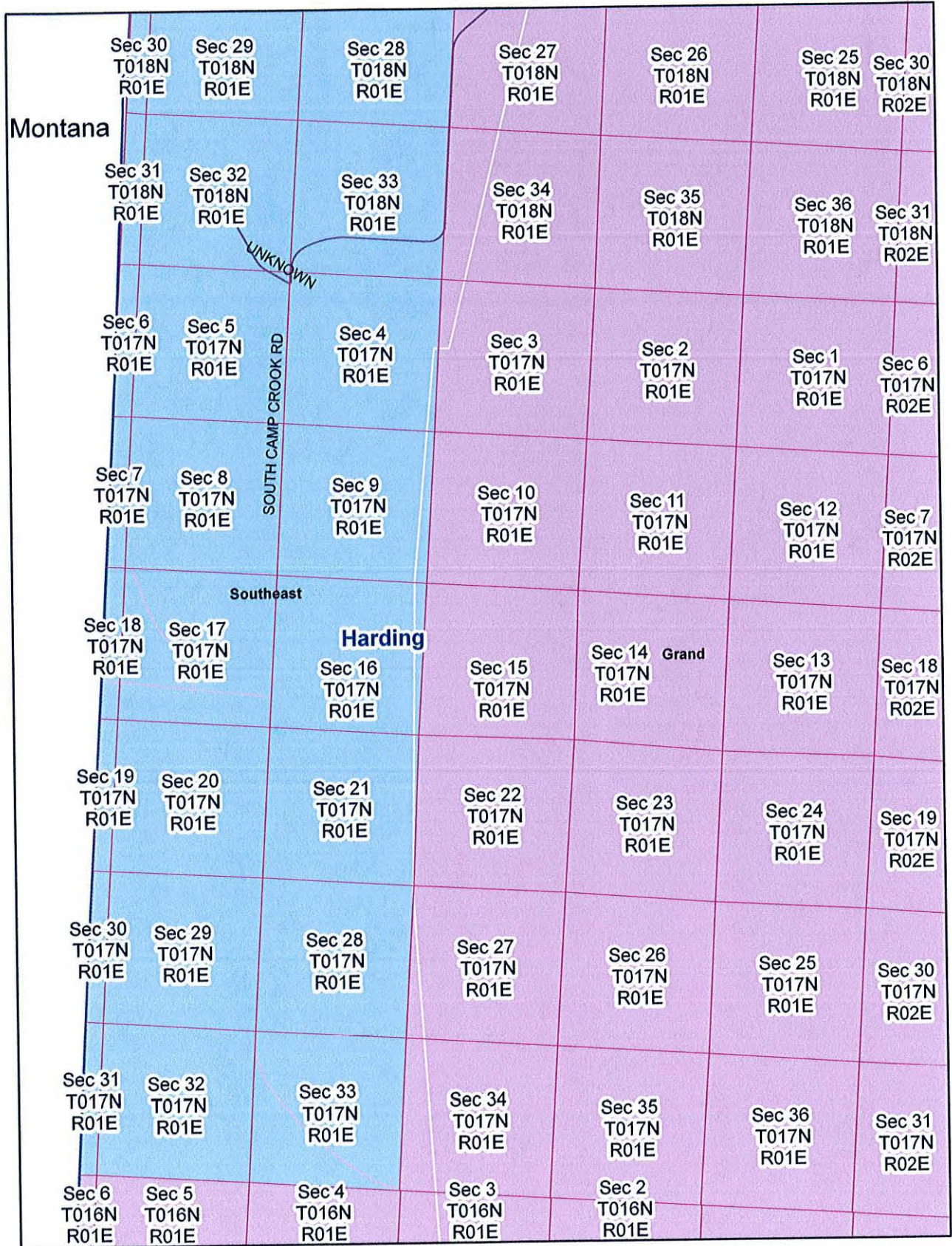
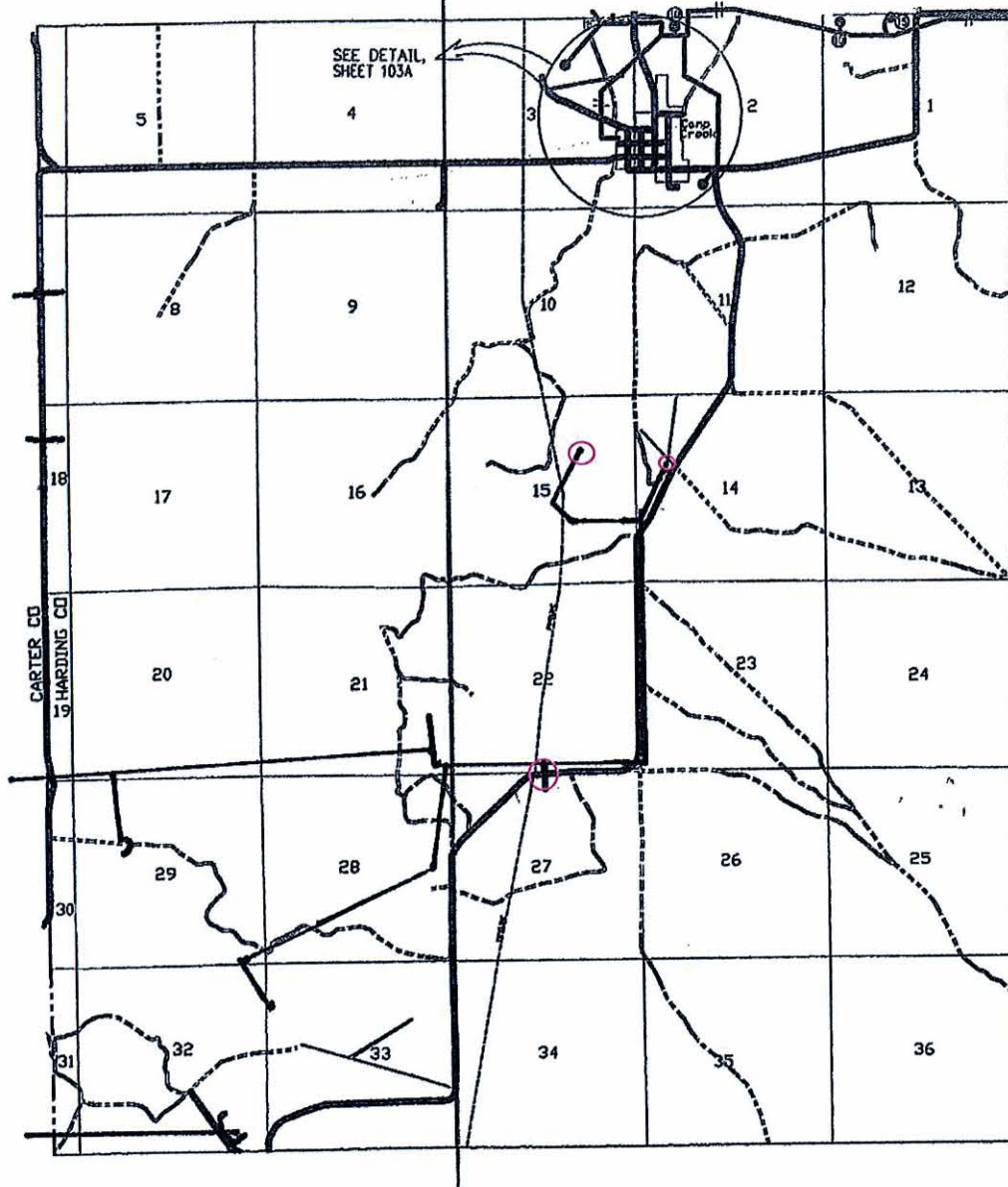


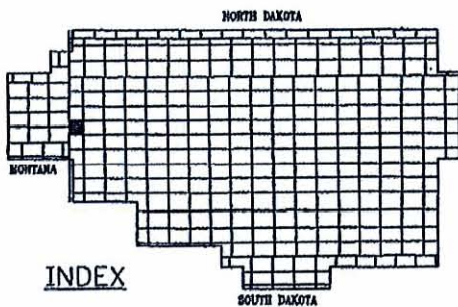
Exhibit B

Page 5 of 6

JOINS DETAIL MAP 81

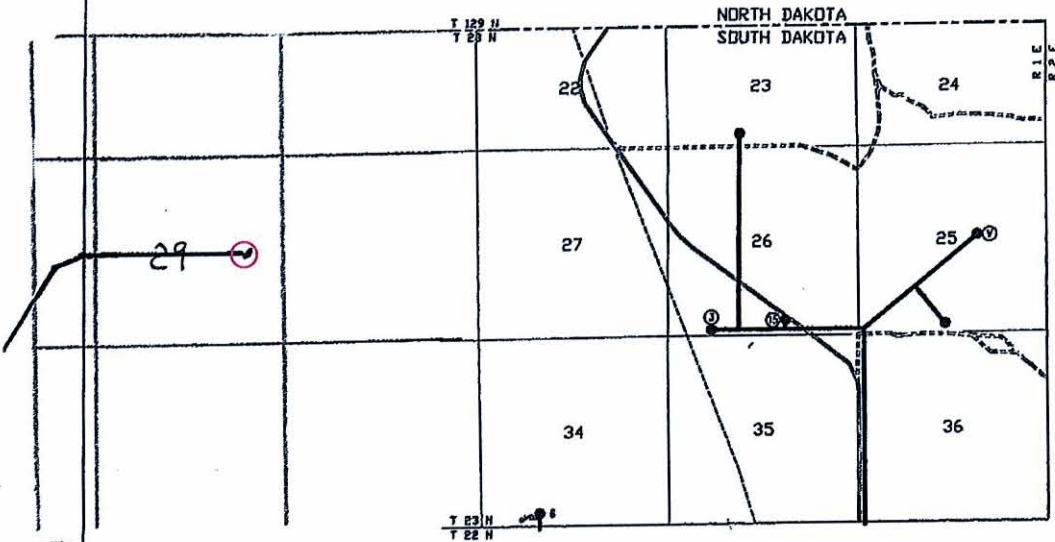


JOINS DETAIL MAP 104



Southeast exceptions: ○

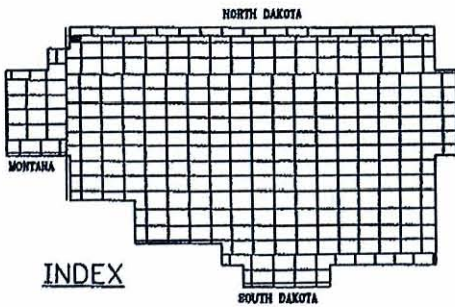
	DATE	REVISION AND PURPOSE	SCALE 	
				DETAIL MAP
			RANGE TOWN DETAIL R1E T18N 103	
		DRAWN BY: CLG DATE: 10-21-94		



JOINS DETAIL MAP 2

JOINS DETAIL MAP 19

Southeast exceptions: ○



ELECTRICAL CONSULTANTS, INC.
MEMBER OF THE GRAND ELECTRIC COOPERATIVE

DATE	REVISION AND PURPOSE



GRAND ELECTRIC COOPERATIVE
BISON, SOUTH DAKOTA

DRAWN BY: GLC DATE: 10-21-94

SCALE		
0 1/4 1/2 3/4 1 MILE		
DETAIL MAP		
RANGE	TOWN	DETAIL
R1E	T23N	1

**Current Exceptions of the Territory Boundary between Grand Electric
Cooperative, Inc. and Southeast Electric Cooperative, Inc.**

EXCEPTIONS:

All customers served by Southeast as of February 15, 2011.

- 1) T23N, R1E, Section 29 (See Detail Map 1).
- 2) T18N, R1E, Sections 14, 15, 22, and 27 (See Detail Map 103).