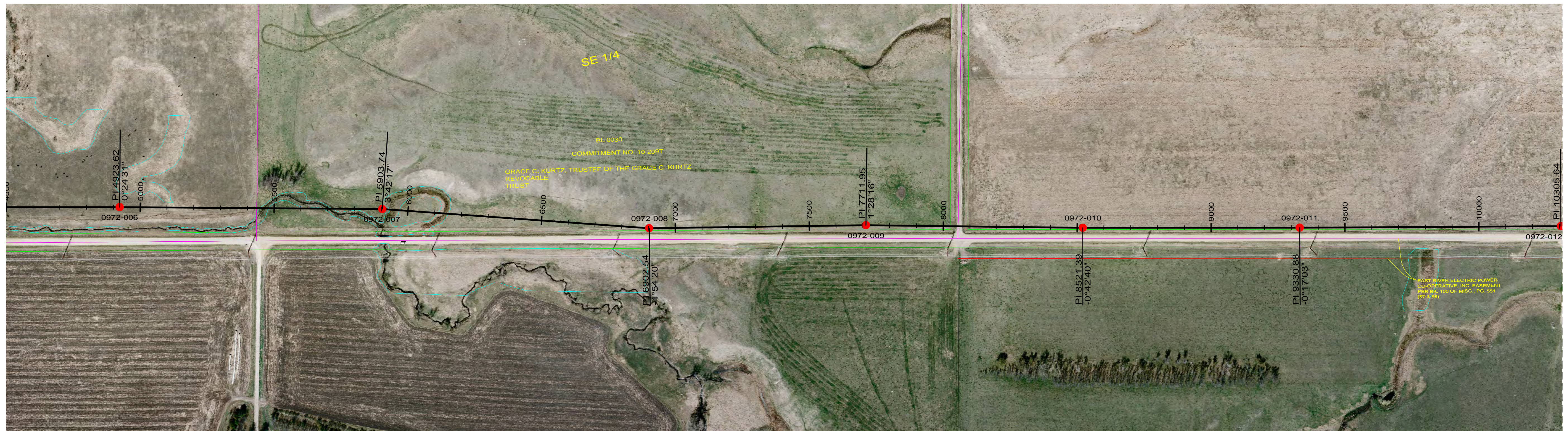


0972-004 - 0972-015, OKV, 3, 8-7, STRAND, EHS, STEEL WIR, RULING SPAN 935 (FT), TENSION 1752 (LBS) AT 60 (DEG F) INITIAL, DISPLAYED -20 DEG F MAX SAG 1755 (LBS)
 0972-004 - 0972-015, OKV, OPGW, DNO-8959 WIR, RULING SPAN 941 (FT), TENSION 2850 (LBS) AT 60 (DEG F) INITIAL, DISPLAYED -20 DEG F MAX SAG 2760 (LBS)
 0972-004 - 0972-015, 345KV, CARDINAL_ACSS_TW,WIR, RULING SPAN 941 (FT), TENSION 5551 (LBS) AT 60 (DEG F) INITIAL, DISPLAYED MAX OP TEMP (200 DEG C) MAX SAG 3482 (LBS)



NOTE: REFER TO THE STRUCTURE LIST FOR DETAILED DESIGN INFORMATION.

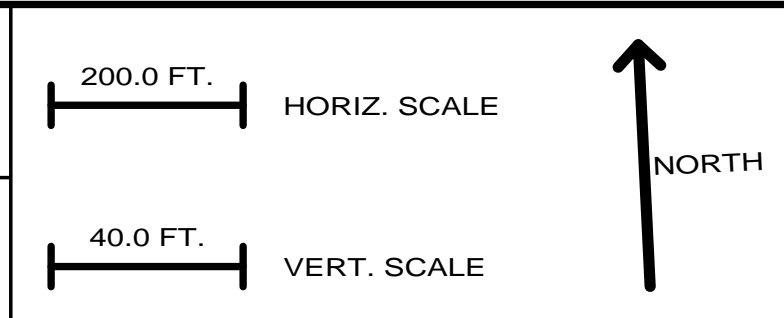
FILED UNDER: XXXX



REV	DESCRIPTION	DWN	DGN	CHK	DATE	APPROVALS	DATE	DESIGN DATA
12	AS-BUILT W.O. #8972	MWB	MWB	HWD	05/01/15			
11	RELINE MARKUPS INCORPORATED	MWB	MWB	HWD	07/25/14			
10	SWAPPED STRUCTURE #301 WITH #84 (145') IN SEG 7. SEE STRUCTURE LOCATION MATRIX REV 11 FOR DETAILS.	MWB	MWB	HWD	06/26/14			
9	MOVED STRUCTURE 043 WEST. SEE 0972 BROOKINGS-LYON STRUCTURE LOCATION MATRIX REV 10 FOR DETAILS.	MWB	MWB	HWD	02/04/14			
8	UPDATED STRUCTURE NOTES	MWB	MWB	HWD	12/13/13			
7	VARIOUS STAKING REVIEW MOVES. SEE 0972 BROOKINGS-LYON STRUCTURE MATRIX REV 8 FOR DETAILS.	MWB	MWB	HWD	05/01/15			
6		MWB	MWB	HWD	05/01/15			
5		MWB	MWB	HWD	05/01/15			
4		MWB	MWB	HWD	05/01/15			
3		MWB	MWB	HWD	05/01/15			
2		MWB	MWB	HWD	05/01/15			
1		MWB	MWB	HWD	05/01/15			

GREAT RIVER ENERGY™

BROOKINGS - LYON COUNTY
345 KV DOUBLE CIRCUIT TRANSMISSION LINE



DWG. NO.
0972-91D
REVISION: 12
SHEET 2 OF 60