

BROOKINGS SUB - 0972-001, 0KV, 3-8-7 STRAND EHS STEEL - SLACK WIR, RULING SPAN 325 (FT), TENSION 666 (LBS) AT 60 (DEG F) INITIAL, DISPLAYED -20 DEG F MAX SAG 826 (LBS)
 BROOKINGS SUB - 0972-001, 345KV, CARDINAL ACSS TW - SLACK WIR, RULING SPAN 329 (FT), TENSION 1472 (LBS) AT 60 (DEG F) INITIAL, DISPLAYED MAX OP TEMP (200 DEG C) MAX SAG 1108 (LBS)
 BROOKINGS SUB - 0972-001, 0KV, 3-8-7 STRAND EHS STEEL - SLACK WIR, RULING SPAN 323 (FT), TENSION 671 (LBS) AT 60 (DEG F) INITIAL, DISPLAYED -20 DEG F MAX SAG 836 (LBS)
 0972-001 - 0972-002, 0KV, 3-8-7 STRAND EHS STEEL WIR, RULING SPAN 568 (FT), TENSION 2292 (LBS) AT 60 (DEG F) INITIAL, DISPLAYED -20 DEG F MAX SAG 2716 (LBS)
 0972-001 - 0972-002, 0KV, OPGW DNO-8959 WIR, RULING SPAN 531 (FT), TENSION 2438 (LBS) AT 60 (DEG F) INITIAL, DISPLAYED -20 DEG F MAX SAG 3119 (LBS)
 0972-001 - 0972-002, 345KV, CARDINAL ACSS TW WIR, RULING SPAN 567 (FT), TENSION 4998 (LBS) AT 60 (DEG F) INITIAL, DISPLAYED MAX OP TEMP (200 DEG C) MAX SAG 2506 (LBS)
 0972-001 - 0972-002, 345KV, CARDINAL ACSS TW WIR, RULING SPAN 531 (FT), TENSION 4923 (LBS) AT 60 (DEG F) INITIAL, DISPLAYED MAX OP TEMP (200 DEG C) MAX SAG 2393 (LBS)
 0972-002 - 0972-004, 0KV, 3-8-7 STRAND EHS STEEL WIR, RULING SPAN 1044 (FT), TENSION 2476 (LBS) AT 60 (DEG F) INITIAL, DISPLAYED -20 DEG F MAX SAG 2266 (LBS)
 0972-002 - 0972-004, 0KV, OPGW DNO-8959 WIR, RULING SPAN 1044 (FT), TENSION 2728 (LBS) AT 60 (DEG F) INITIAL, DISPLAYED -20 DEG F MAX SAG 2591 (LBS)
 0972-002 - 0972-004, 345KV, CARDINAL ACSS TW WIR, RULING SPAN 1044 (FT), TENSION 5653 (LBS) AT 60 (DEG F) INITIAL, DISPLAYED MAX OP TEMP (200 DEG C) MAX SAG 3694 (LBS)
 0972-004 - 0972-015, 0KV, 3-8-7 STRAND EHS STEEL WIR, RULING SPAN 935 (FT), TENSION 2435 (LBS) AT 60 (DEG F) INITIAL, DISPLAYED -20 DEG F MAX SAG 2943 (LBS)
 0972-004 - 0972-015, 0KV, OPGW DNO-8959 WIR, RULING SPAN 941 (FT), TENSION 2850 (LBS) AT 60 (DEG F) INITIAL, DISPLAYED -20 DEG F MAX SAG 2761 (LBS)
 0972-004 - 0972-015, 345KV, CARDINAL ACSS TW WIR, RULING SPAN 941 (FT), TENSION 5551 (LBS) AT 60 (DEG F) INITIAL, DISPLAYED MAX OP TEMP (200 DEG C) MAX SAG 3482 (LBS)

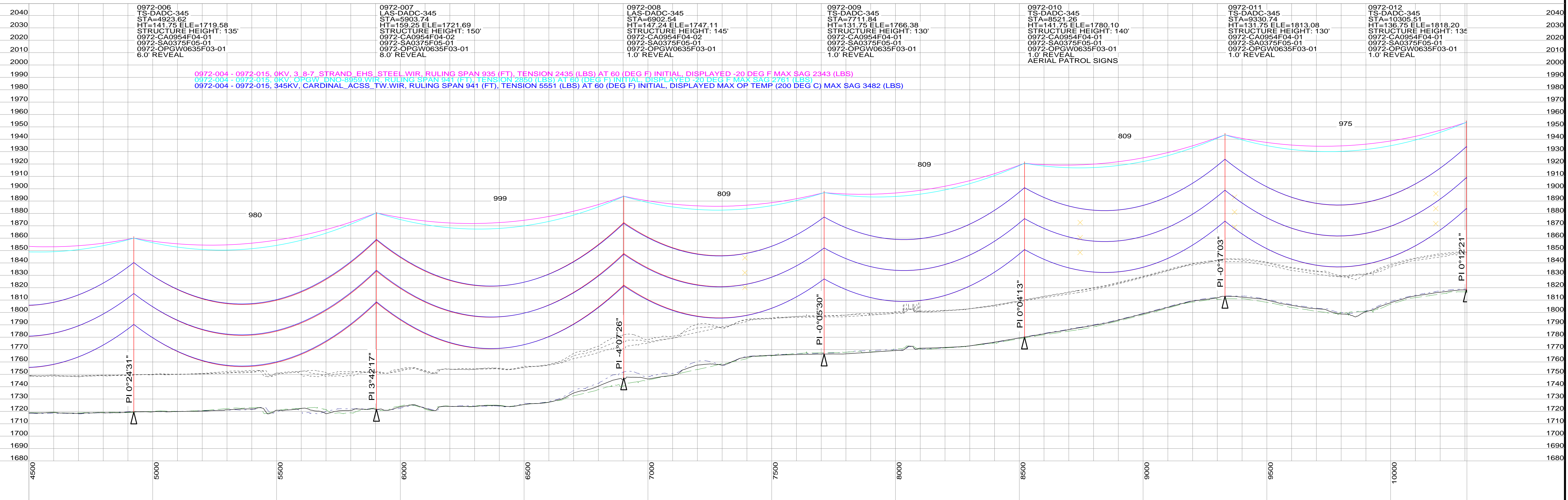


NOTE: REFER TO THE STRUCTURE LIST FOR DETAILED DESIGN INFORMATION.

FILED UNDER: XXXXX

REVISIONS					APPROVALS		DATE	DESIGN DATA
1	ISSUED FOR SD PUC	MWB	MWB	HWD	08/20/13		CONDUCTOR: 954 ACSS/TW 20/7 SHIELD WIRE: 3/8 EHS / DNO-8959 OPGW	
REV	DESCRIPTION	DWN	DGN	CHK	DATE			

DWG. NO. 0972-91D
 REVISION: 1
 SHEET 1 OF 60



0972-004 - 0972-015, 0KV, 3 8-7 STRAND EHS STEEL WIR, RULING SPAN 935 (FT), TENSION 2435 (LBS) AT 60 (DEG F) INITIAL, DISPLAYED -20 DEG F MAX SAG 2343 (LBS)
 0972-004 - 0972-015, 345KV, CARDINAL_ACSS_TW.WIR, RULING SPAN 941 (FT), TENSION 5551 (LBS) AT 60 (DEG F) INITIAL, DISPLAYED MAX OP TEMP (200 DEG C) MAX SAG 3482 (LBS)

0972-006
 TS-DADC-345
 STA=4923.62
 HT=141.75 ELE=1719.58
 STRUCTURE HEIGHT: 135'
 0972-CA0954F04-01
 0972-SA0375F05-01
 0972-OPGW0635F03-01
 6.0' REVEAL

0972-007
 LAS-DADC-345
 STA=5903.74
 HT=139.25 ELE=1721.69
 STRUCTURE HEIGHT: 150'
 0972-CA0954F04-02
 0972-SA0375F05-01
 0972-OPGW0635F03-01
 8.0' REVEAL

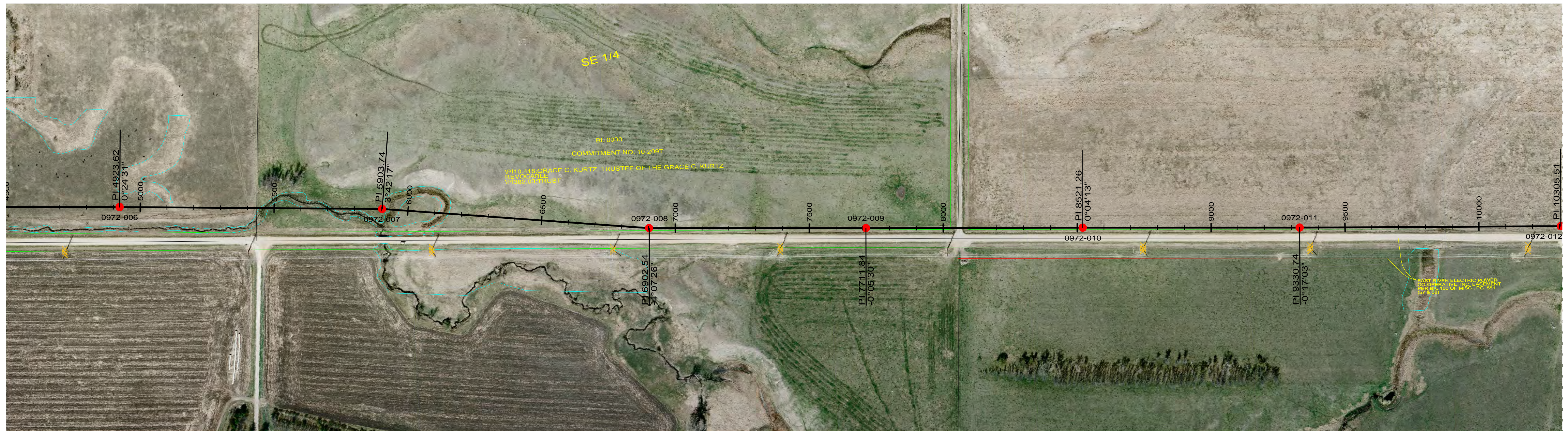
0972-008
 LAS-DADC-345
 STA=6902.54
 HT=147.24 ELE=1747.11
 STRUCTURE HEIGHT: 145'
 0972-CA0954F04-02
 0972-SA0375F05-01
 0972-OPGW0635F03-01
 1.0' REVEAL

0972-009
 TS-DADC-345
 STA=7711.84
 HT=131.75 ELE=1766.38
 STRUCTURE HEIGHT: 130'
 0972-CA0954F04-01
 0972-SA0375F05-01
 0972-OPGW0635F03-01
 1.0' REVEAL

0972-010
 TS-DADC-345
 STA=8521.26
 HT=141.75 ELE=1780.10
 STRUCTURE HEIGHT: 140'
 0972-CA0954F04-01
 0972-SA0375F05-01
 0972-OPGW0635F03-01
 1.0' REVEAL
 AERIAL PATROL SIGNS

0972-011
 TS-DADC-345
 STA=9330.74
 HT=131.75 ELE=1813.08
 STRUCTURE HEIGHT: 130'
 0972-CA0954F04-01
 0972-SA0375F05-01
 0972-OPGW0635F03-01
 1.0' REVEAL

0972-012
 TS-DADC-345
 STA=10305.51
 HT=136.75 ELE=1818.20
 STRUCTURE HEIGHT: 135'
 0972-CA0954F04-01
 0972-SA0375F05-01
 0972-OPGW0635F03-01
 1.0' REVEAL



NOTE: REFER TO THE STRUCTURE LIST FOR DETAILED DESIGN INFORMATION.

FILED UNDER: XXXX

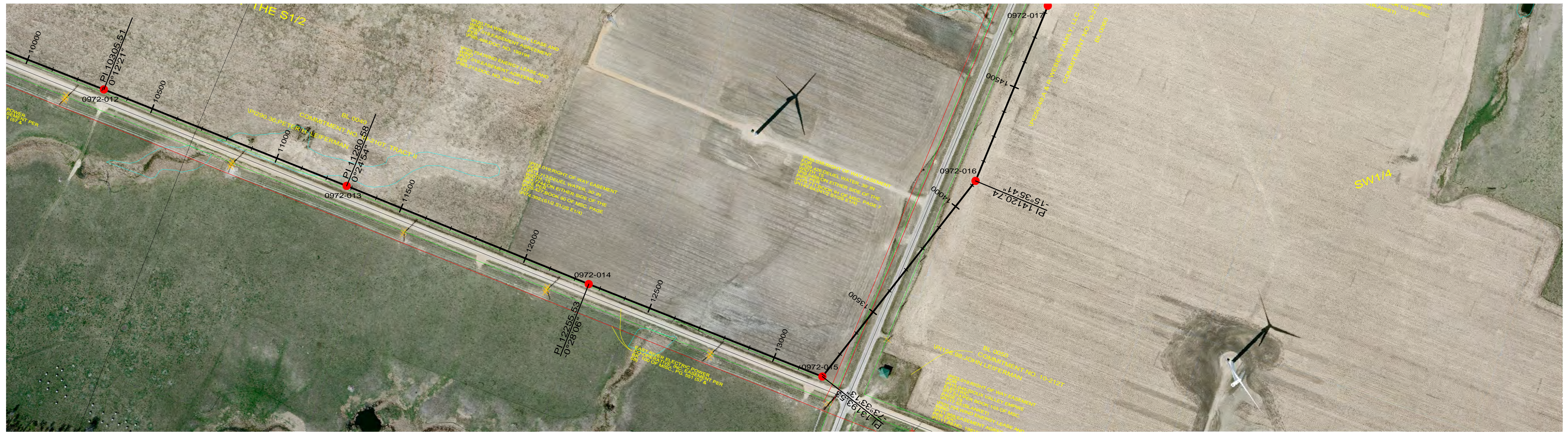
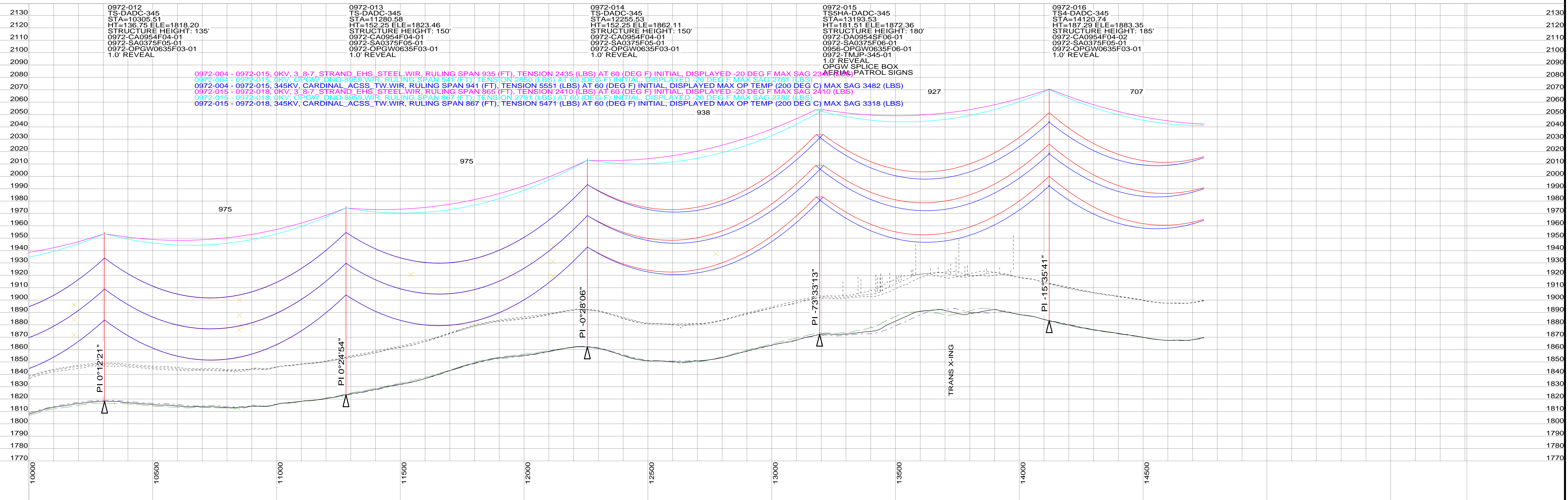
REVISIONS					APPROVALS		DATE	DESIGN DATA
1	ISSUED FOR SD PUC	MWB	MWB	HWD	08/20/13		CONDUCTOR: 954 ACSS/TW 20/7 SHIELD WIRE: 3/8 EHS / DNO-8959 OPGW	
REV	DESCRIPTION	DWN	DGN	CHK	DATE			

GREAT RIVER ENERGY

BROOKINGS - LYON COUNTY
 345 KV DOUBLE CIRCUIT TRANSMISSION LINE

200.0 FT. HORIZ. SCALE
 40.0 FT. VERT. SCALE
 NORTH

DWG. NO.
 0972-91D
 REVISION: 1
 SHEET 2 OF 60



NOTE: REFER TO THE STRUCTURE LIST FOR DETAILED DESIGN INFORMATION.

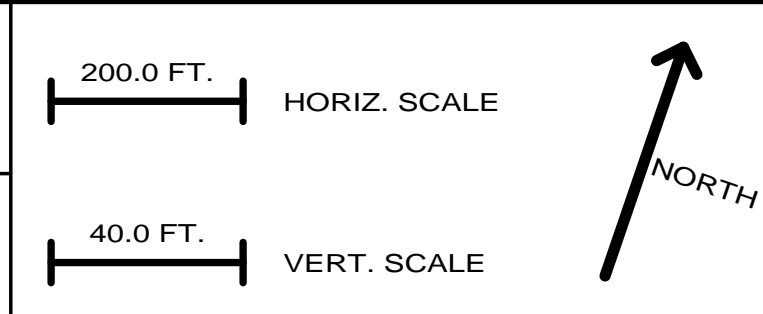
FILED UNDER: XXXX



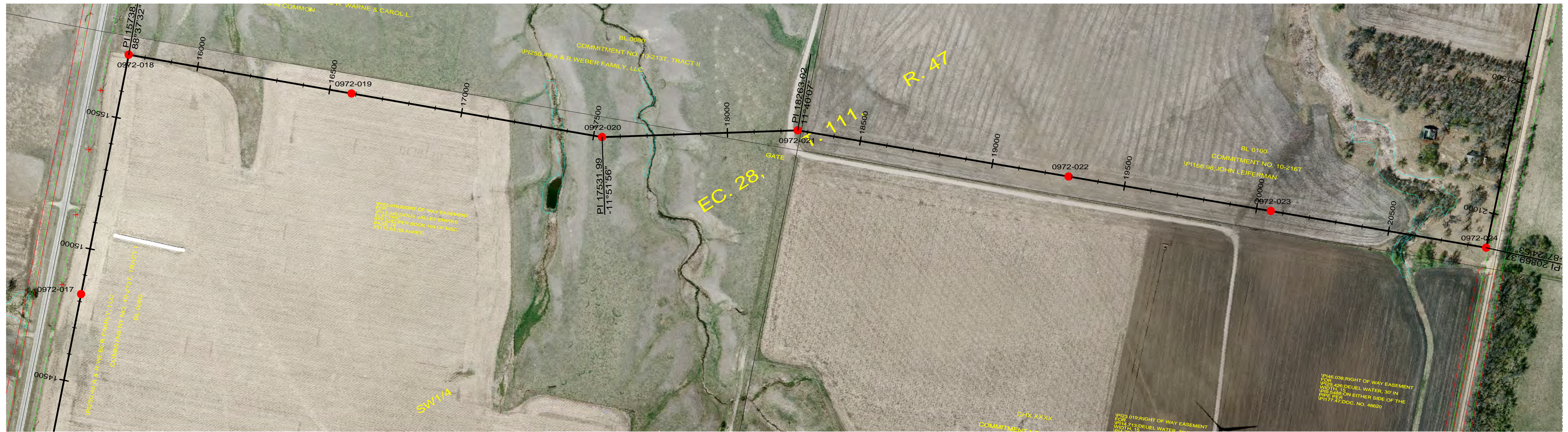
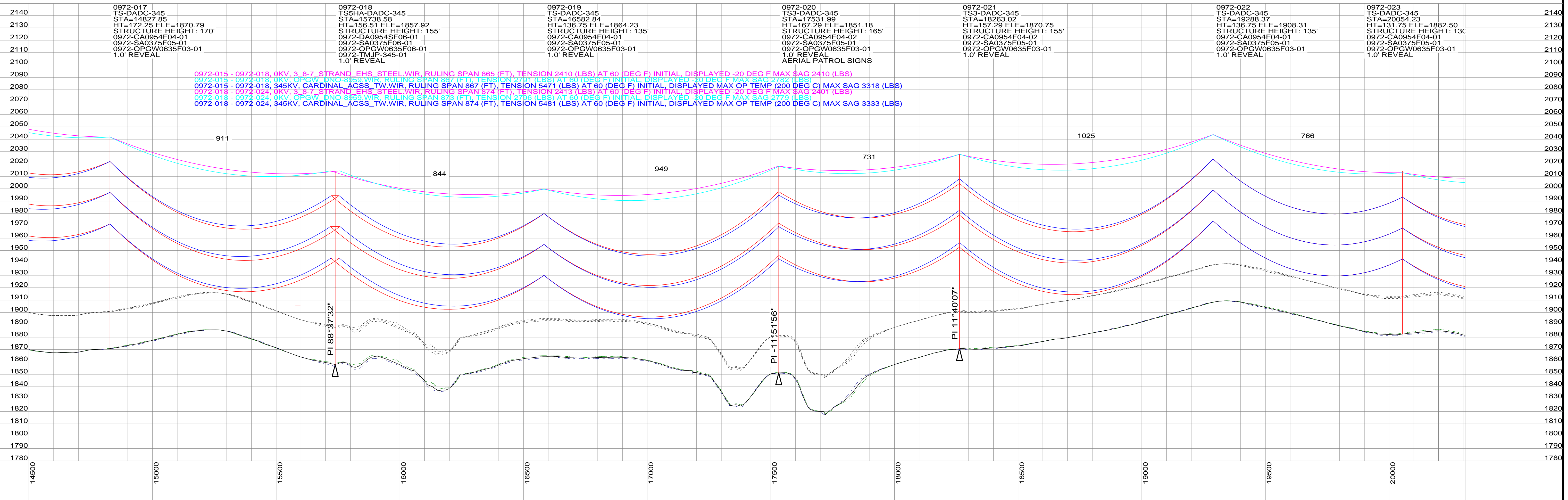
REVISIONS					APPROVALS		DATE	DESIGN DATA
1	ISSUED FOR SD PUC	MWB	MWB	HWD	08/20/13		CONDUCTOR: 954 ACSS/TW 20/7 SHIELD WIRE: 3/8 EHS / DNO-8959 OPGW	
REV	DESCRIPTION	DWN	DGN	CHK	DATE			

GREAT RIVER ENERGY

BROOKINGS - LYON COUNTY
345 KV DOUBLE CIRCUIT TRANSMISSION LINE



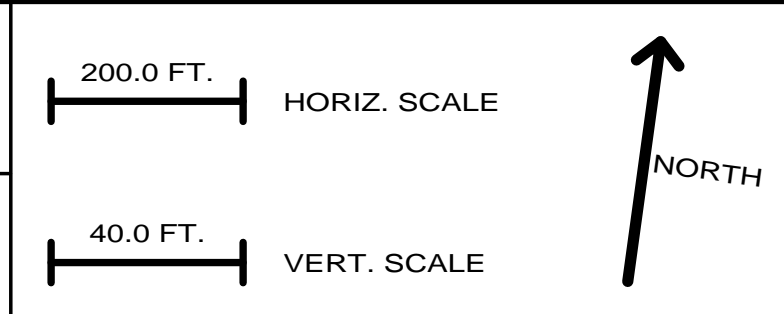
DWG. NO.
0972-91D
REVISION: 1
SHEET 3 OF 60



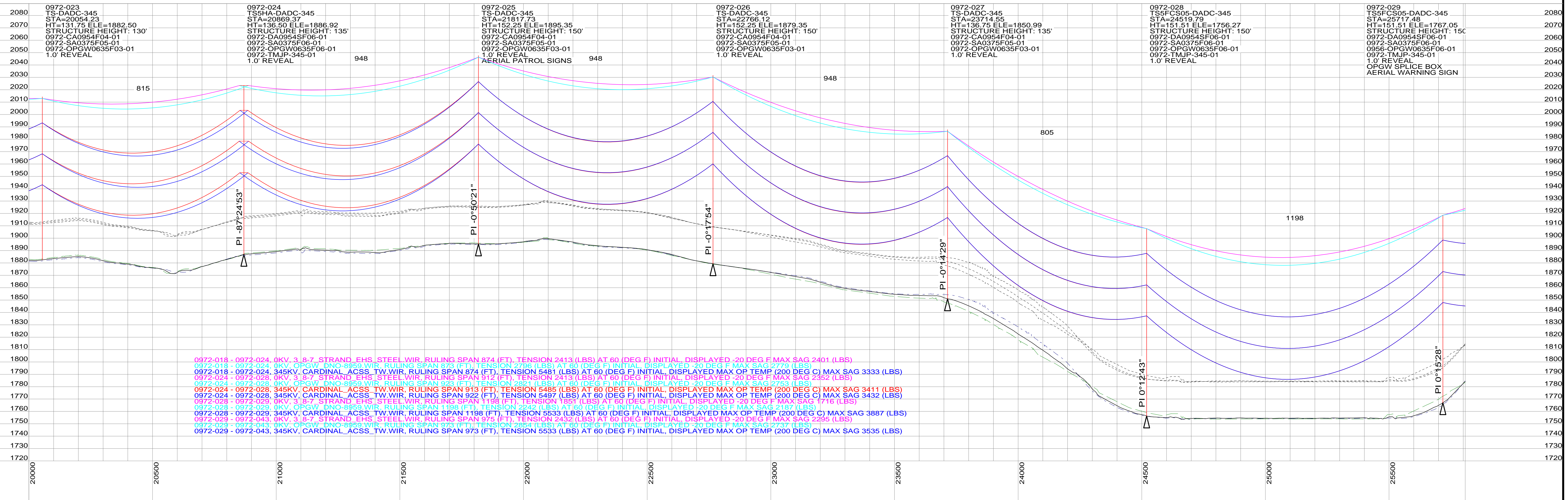
REVISIONS					APPROVALS		DATE	DESIGN DATA
1	ISSUED FOR SD PUC	MWB	MWB	HWD	08/20/13		CONDUCTOR: 954 ACSS/TW 20/7 SHIELD WIRE: 3/8 EHS / DNO-8959 OPGW	
REV	DESCRIPTION	DWN	DGN	CHK	DATE			

GREAT RIVER ENERGY

BROOKINGS - LYON COUNTY
345 KV DOUBLE CIRCUIT TRANSMISSION LINE



DWG. NO.
0972-91D
REVISION: 1
SHEET 4 OF 60



NOTE: REFER TO THE STRUCTURE LIST FOR DETAILED DESIGN INFORMATION.

FILED UNDER: XXXXX



REVISIONS		APPROVALS		DATE	DESIGN DATA
					CONDUCTOR: 954 ACSS/TW 20/7
					SHIELD WIRE: 3/8 EHS / DNO-8959 OPGW
1	ISSUED FOR SD PUC	MWB	MWB	HWD	08/20/13
REV	DESCRIPTION	DWN	DGN	CHK	DATE

GREAT RIVER ENERGY

BROOKINGS - LYON COUNTY
345 KV DOUBLE CIRCUIT TRANSMISSION LINE

200.0 FT. HORIZ. SCALE

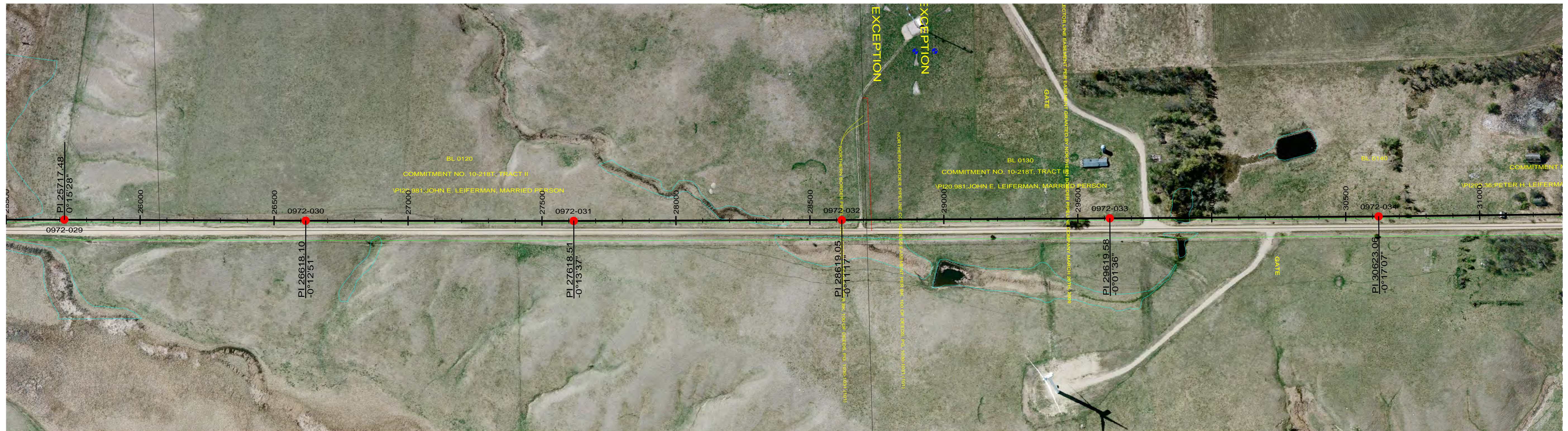
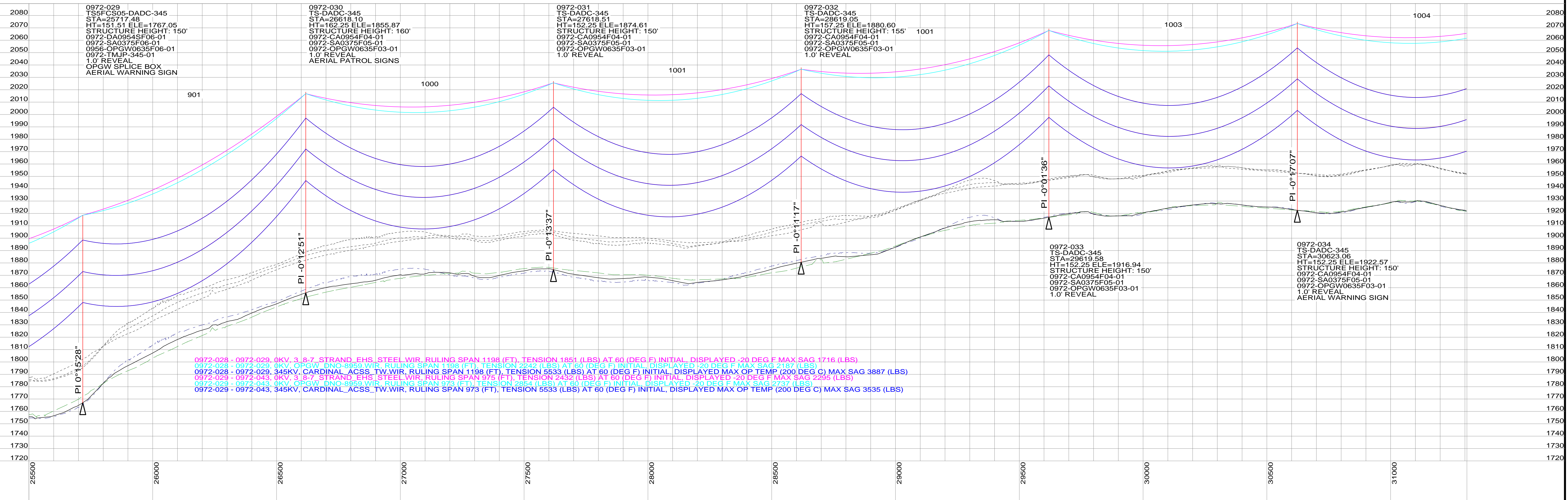
40.0 FT. VERT. SCALE

NORTH

DWG. NO.
0972-91D

REVISION: 1

SHEET 5 OF 60



NOTE: REFER TO THE STRUCTURE LIST FOR DETAILED DESIGN INFORMATION.

FILED UNDER: XXXXX

Stanley Consultants INC.

REGISTERED PROFESSIONAL ENGINEER
REG. NO. 11393
MARK D. JENNINGS
NORTH DAKOTA

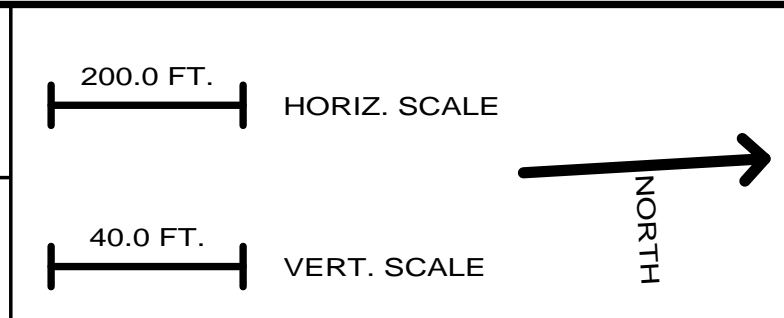
DATE: 08/20/2013

REVISIONS		APPROVALS		DATE	DESIGN DATA
1	ISSUED FOR SD PUC	MWB	MWB	HWD	08/20/13
REV	DESCRIPTION	DWN	DGN	CHK	DATE

DRAWN BY: MWB	08/20/13	CONDUCTOR: 954 ACSS/TW 20/7
DESIGN BY: MWB	08/20/13	SHIELD WIRE: 3/8 EHS / DNO-8959 OPGW
CHECKED BY: HWD	08/20/13	
APPROVED BY: MFJ	08/20/13	

GREAT RIVER ENERGY

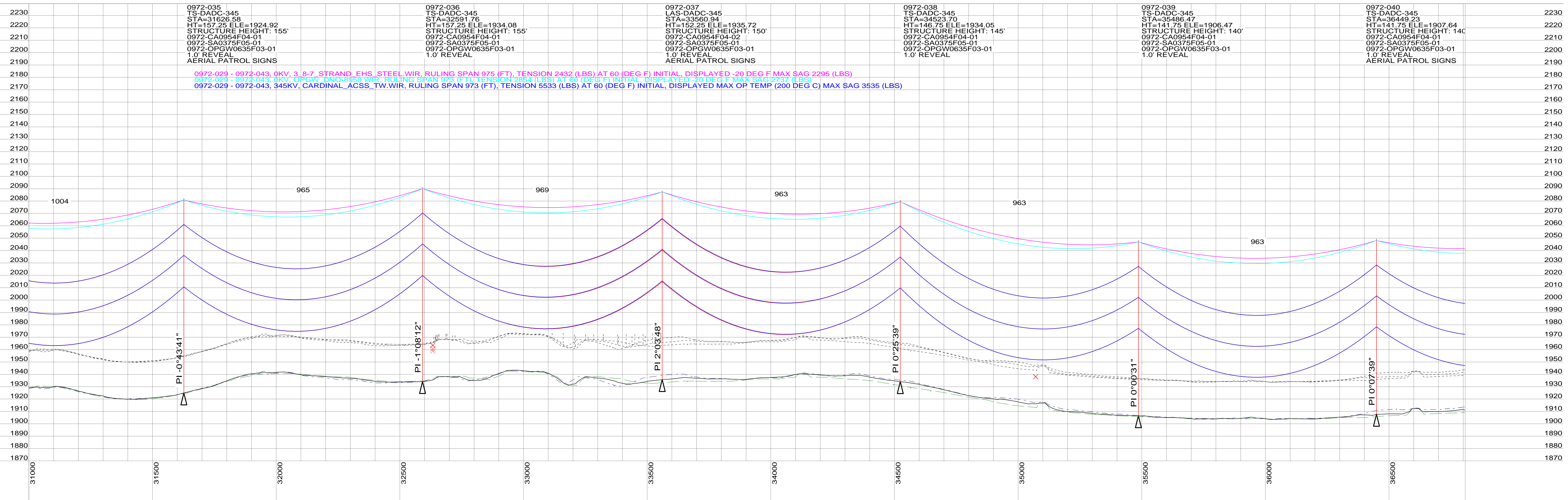
BROOKINGS - LYON COUNTY
345 KV DOUBLE CIRCUIT TRANSMISSION LINE



DWG. NO.
0972-91D

REVISION: 1

SHEET 6 OF 60



0972-035
TS-DADC-345
STA=31626.58
HT=157.25 ELE=1924.92
STRUCTURE HEIGHT: 155'
0972-CA0954F04-01
0972-SA0375F05-01
0972-OPGW0635F03-01
1.0' REVEAL
AERIAL PATROL SIGNS

0972-036
TS-DADC-345
STA=32591.76
HT=157.25 ELE=1934.08
STRUCTURE HEIGHT: 155'
0972-CA0954F04-01
0972-SA0375F05-01
0972-OPGW0635F03-01
1.0' REVEAL
AERIAL PATROL SIGNS

0972-037
LAS-DADC-345
STA=33560.94
HT=152.25 ELE=1935.72
STRUCTURE HEIGHT: 150'
0972-CA0954F04-02
0972-SA0375F05-01
0972-OPGW0635F03-01
1.0' REVEAL
AERIAL PATROL SIGNS

0972-038
TS-DADC-345
STA=34523.70
HT=146.75 ELE=1934.05
STRUCTURE HEIGHT: 145'
0972-CA0954F04-01
0972-SA0375F05-01
0972-OPGW0635F03-01
1.0' REVEAL

0972-039
TS-DADC-345
STA=35486.47
HT=141.75 ELE=1906.47
STRUCTURE HEIGHT: 140'
0972-CA0954F04-01
0972-SA0375F05-01
0972-OPGW0635F03-01
1.0' REVEAL

0972-040
TS-DADC-345
STA=36449.23
HT=141.75 ELE=1907.64
STRUCTURE HEIGHT: 140'
0972-CA0954F04-01
0972-SA0375F05-01
0972-OPGW0635F03-01
1.0' REVEAL
AERIAL PATROL SIGNS

0972-029 - 0972-043, 0KV, 3 8-7 STRAND EHS STEEL WIR, RULING SPAN 975 (FT), TENSION 2432 (LBS) AT 60 (DEG F) INITIAL, DISPLAYED -20 DEG F MAX SAG 2295 (LBS)
0972-029 - 0972-043, 345KV, CARDINAL ACSS_TW.WIR, RULING SPAN 973 (FT), TENSION 5533 (LBS) AT 60 (DEG F) INITIAL, DISPLAYED MAX OP TEMP (200 DEG C) MAX SAG 3535 (LBS)



NOTE: REFER TO THE STRUCTURE LIST FOR DETAILED DESIGN INFORMATION.

FILED UNDER: XXXXX

REVISIONS					APPROVALS	DATE	DESIGN DATA
1	ISSUED FOR SD PUC	MWB	MWB	HWD	08/20/13		CONDUCTOR: 954 ACSS/TW 20/7 SHIELD WIRE: 3/8 EHS / DNO-8959 OPGW
REV	DESCRIPTION	DWN	DGN	CHK	DATE		

GREAT RIVER ENERGY

BROOKINGS - LYON COUNTY
345 KV DOUBLE CIRCUIT TRANSMISSION LINE

200.0 FT. HORIZ. SCALE

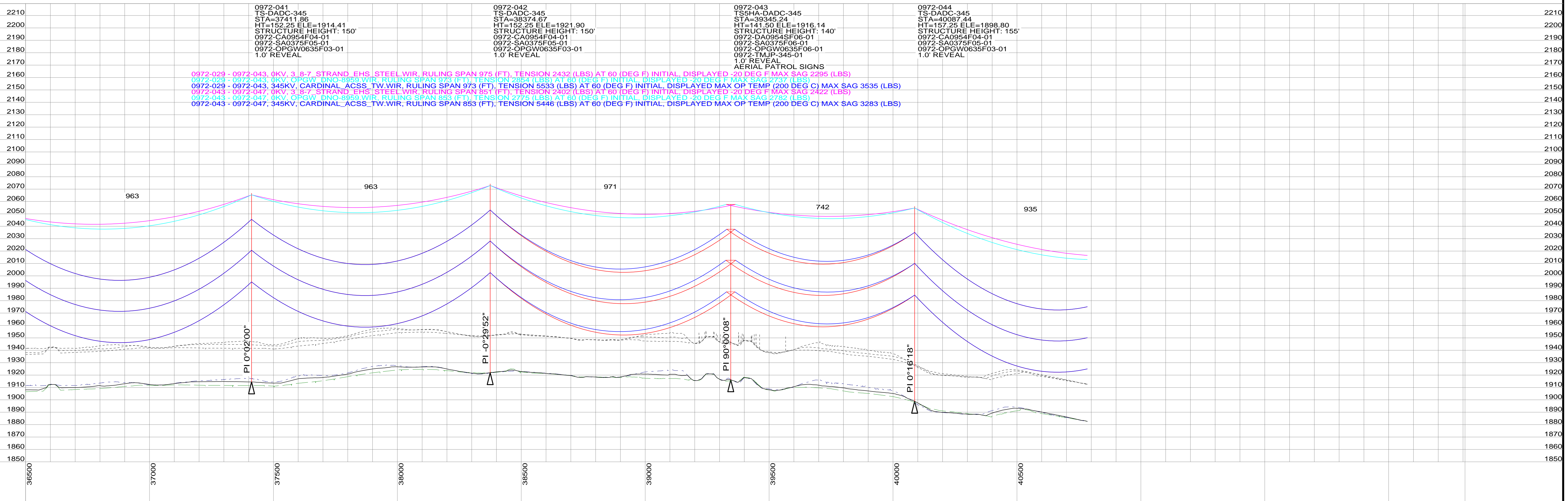
40.0 FT. VERT. SCALE

NORTH

DWG. NO.
0972-91D

REVISION: 1

SHEET 7 OF 60



0972-041
TS-DADC-345
STA=37411.96
HT=152.25 ELE=1914.41
STRUCTURE HEIGHT: 150'
0972-CA0954F04-01
0972-SA0375F05-01
0972-OPGW0635F03-01
1.0' REVEAL

0972-042
TS-DADC-345
STA=38374.67
HT=152.25 ELE=1921.90
STRUCTURE HEIGHT: 150'
0972-CA0954F04-01
0972-SA0375F05-01
0972-OPGW0635F03-01
1.0' REVEAL

0972-043
TS-DADC-345
STA=39345.24
HT=141.50 ELE=1916.14
STRUCTURE HEIGHT: 140'
0972-DA0954SF06-01
0972-SA0375F05-01
0972-OPGW0635F06-01
0972-TMJP-345-01
1.0' REVEAL
AERIAL PATROL SIGNS

0972-044
TS-DADC-345
STA=40087.44
HT=157.25 ELE=1898.80
STRUCTURE HEIGHT: 155'
0972-CA0954F04-01
0972-SA0375F05-01
0972-OPGW0635F03-01
1.0' REVEAL

0972-029 - 0972-043, 0KV, 3 8-7 STRAND EHS STEEL WIR, RULING SPAN 975 (FT), TENSION 2432 (LBS) AT 60 (DEG F) INITIAL, DISPLAYED -20 DEG F MAX SAG 2295 (LBS)

0972-029 - 0972-043, 345KV, CARDINAL_ACSS_TW.WIR, RULING SPAN 973 (FT), TENSION 5533 (LBS) AT 60 (DEG F) INITIAL, DISPLAYED MAX OP TEMP (200 DEG C) MAX SAG 3535 (LBS)

0972-043 - 0972-047, 0KV, 3 8-7 STRAND EHS STEEL WIR, RULING SPAN 851 (FT), TENSION 2402 (LBS) AT 60 (DEG F) INITIAL, DISPLAYED -20 DEG F MAX SAG 2422 (LBS)

0972-043 - 0972-047, 0KV, OPGW DNO-8959 WIR, RULING SPAN 853 (FT), TENSION 2775 (LBS) AT 60 (DEG F) INITIAL, DISPLAYED -20 DEG F MAX SAG 2732 (LBS)

0972-043 - 0972-047, 345KV, CARDINAL_ACSS_TW.WIR, RULING SPAN 853 (FT), TENSION 5446 (LBS) AT 60 (DEG F) INITIAL, DISPLAYED MAX OP TEMP (200 DEG C) MAX SAG 3283 (LBS)



NOTE: REFER TO THE STRUCTURE LIST FOR DETAILED DESIGN INFORMATION.

FILED UNDER: XXXXX

REVISIONS					APPROVALS		DATE	DESIGN DATA
1	ISSUED FOR SD PUC	MWB	MWB	HWD			08/20/13	CONDUCTOR: 954 ACSS/TW 20/7 SHIELD WIRE: 3/8 EHS / DNO-8959 OPGW
REV	DESCRIPTION	DWN	DGN	CHK			DATE	

GREAT RIVER ENERGY

BROOKINGS - LYON COUNTY
345 KV DOUBLE CIRCUIT TRANSMISSION LINE

200.0 FT. HORIZ. SCALE

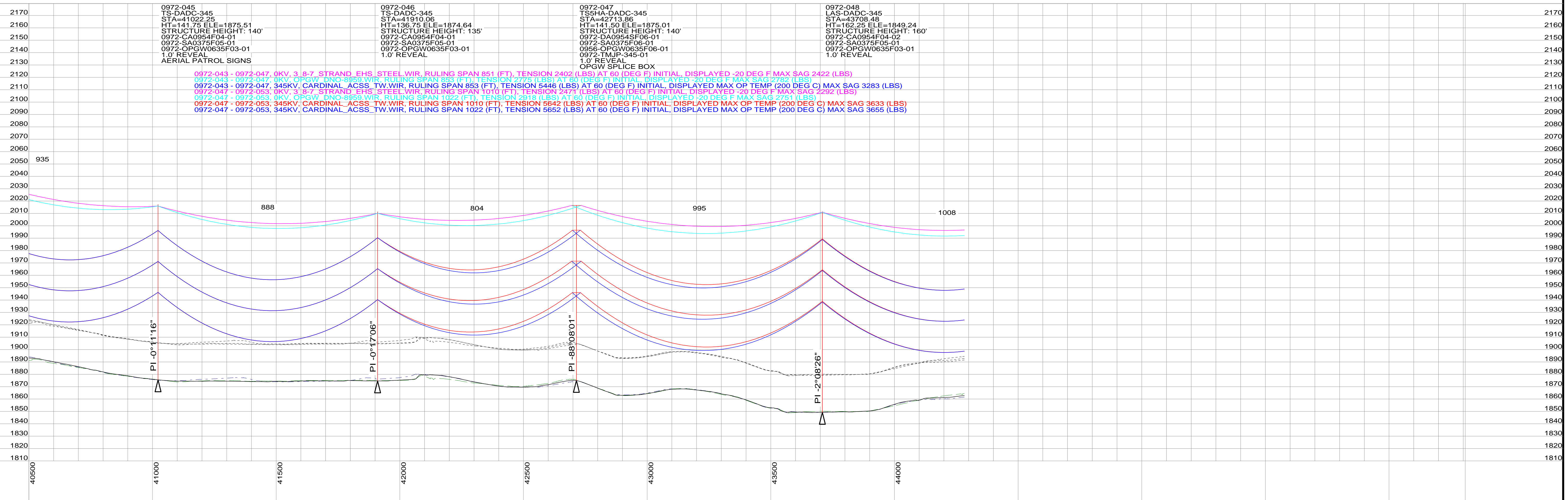
40.0 FT. VERT. SCALE

NORTH

DWG. NO.
0972-91D

REVISION: 1

SHEET 8 OF 60



NOTE: REFER TO THE STRUCTURE LIST FOR DETAILED DESIGN INFORMATION.

FILED UNDER: XXXX

REVISIONS					APPROVALS		DATE	DESIGN DATA
1	ISSUED FOR SD PUC	MWB	MWB	HWD	08/20/13		CONDUCTOR: 954 ACSS/TW 20/7 SHIELD WIRE: 3/8 EHS / DNO-8959 OPGW	
REV	DESCRIPTION	DWN	DGN	CHK	DATE			

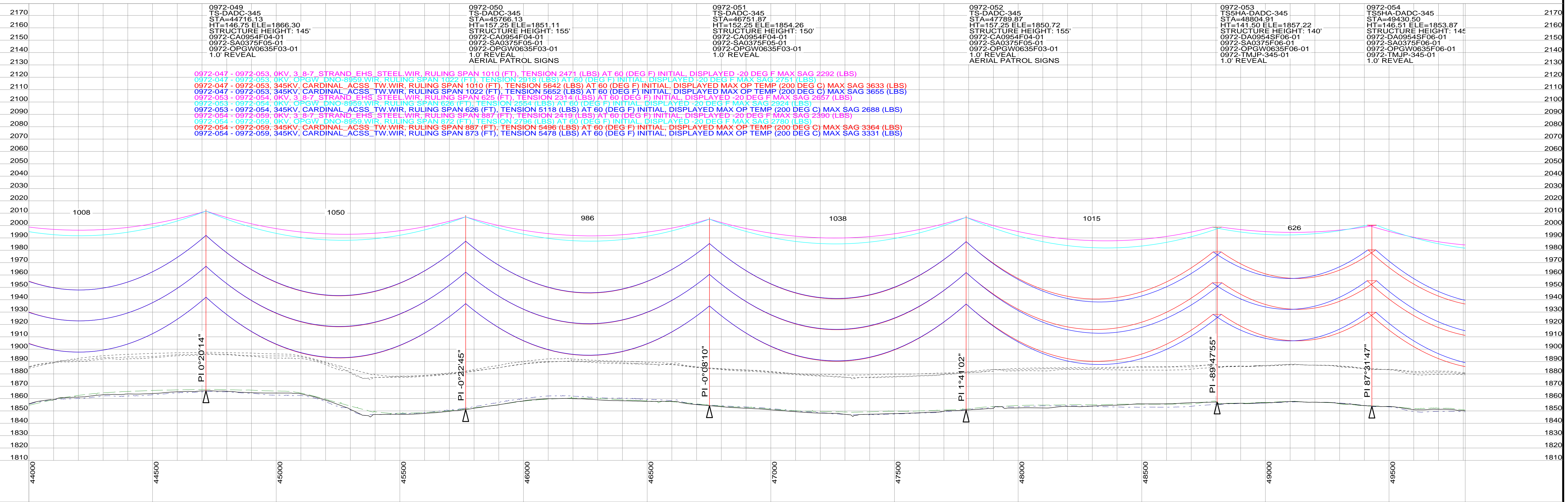
GREAT RIVER ENERGY

BROOKINGS - LYON COUNTY
345 KV DOUBLE CIRCUIT TRANSMISSION LINE

200.0 FT. HORIZ. SCALE
40.0 FT. VERT. SCALE

NORTH

DWG. NO.
0972-91D
REVISION: 1
SHEET 9 OF 60



NOTE: REFER TO THE STRUCTURE LIST FOR DETAILED DESIGN INFORMATION.

FILED UNDER: XXXX

Stanley Consultants INC.

REVISIONS				APPROVALS	DATE	DESIGN DATA
1	ISSUED FOR SD PUC	MWB	MWB	HWD	08/20/13	CONDUCTOR: 954 ACSS/TW 20/7 SHIELD WIRE: 3/8 EHS / DNO-8959 OPGW
REV	DESCRIPTION	DWN	DGN	CHK	DATE	

GREAT RIVER ENERGY

BROOKINGS - LYON COUNTY
345 KV DOUBLE CIRCUIT TRANSMISSION LINE

200.0 FT. HORIZ. SCALE

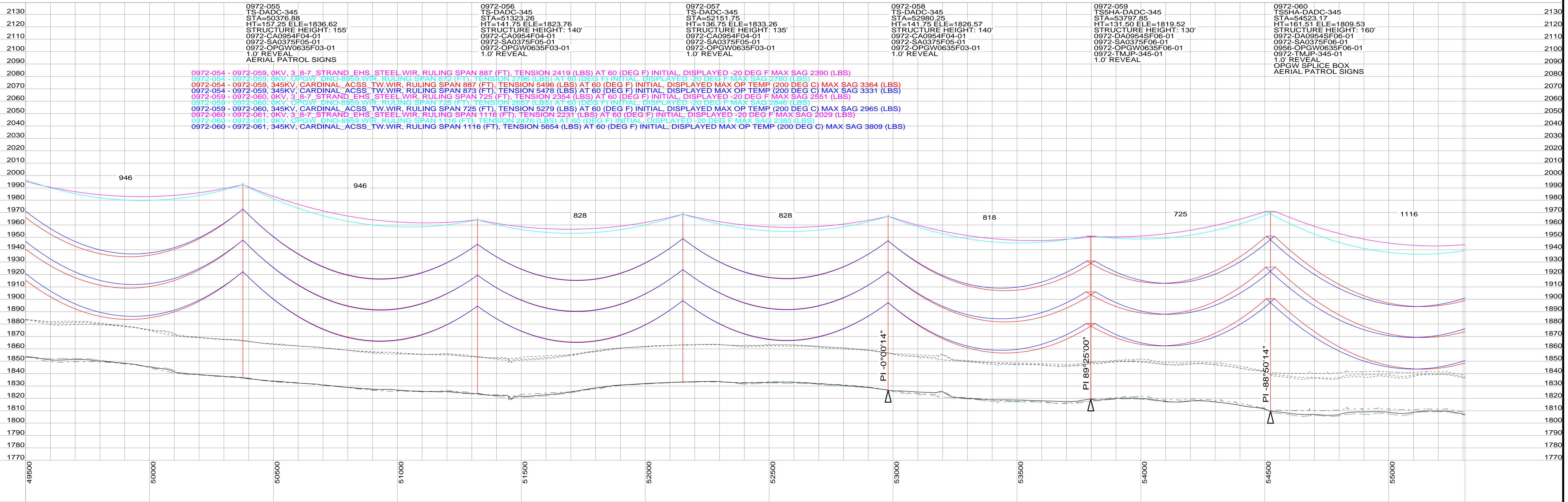
40.0 FT. VERT. SCALE

NORTH

DWG. NO.
0972-91D

REVISION: 1

SHEET 10 OF 60



0972-055 TS-DADC-345 STA=50376.88 HT=157.25 ELE=1836.62 STRUCTURE HEIGHT: 155' 0972-CA0954F04-01 0972-SA0375F06-01 0972-OPGW0635F03-01 1.0' REVEAL AERIAL PATROL SIGNS	0972-056 TS-DADC-345 STA=51223.26 HT=141.75 ELE=1823.76 STRUCTURE HEIGHT: 140' 0972-CA0954F04-01 0972-SA0375F06-01 0972-OPGW0635F03-01 1.0' REVEAL	0972-057 TS-DADC-345 STA=52161.75 HT=136.75 ELE=1833.26 STRUCTURE HEIGHT: 135' 0972-CA0954F04-01 0972-SA0375F06-01 0972-OPGW0635F03-01 1.0' REVEAL	0972-058 TS-DADC-345 STA=52990.25 HT=141.75 ELE=1826.57 STRUCTURE HEIGHT: 140' 0972-CA0954F04-01 0972-SA0375F06-01 0972-OPGW0635F03-01 1.0' REVEAL	0972-059 TS5HA-DADC-345 STA=53797.85 HT=131.50 ELE=1819.52 STRUCTURE HEIGHT: 130' 0972-DA0954SF06-01 0972-SA0375F06-01 0972-OPGW0635F06-01 0972-TMJP-345-01 1.0' REVEAL OPGW SPLICE BOX AERIAL PATROL SIGNS	0972-060 TS5HA-DADC-345 STA=54523.17 HT=161.51 ELE=1809.53 STRUCTURE HEIGHT: 160' 0972-DA0954SF06-01 0972-SA0375F06-01 0956-OPGW0635F06-01 0972-TMJP-345-01 1.0' REVEAL OPGW SPLICE BOX AERIAL PATROL SIGNS
---------------------------------------------------------------------------------------------------------------------------------------------------------------------------------------------------	----------------------------------------------------------------------------------------------------------------------------------------------------------------------------	----------------------------------------------------------------------------------------------------------------------------------------------------------------------------	----------------------------------------------------------------------------------------------------------------------------------------------------------------------------	----------------------------------------------------------------------------------------------------------------------------------------------------------------------------------------------------------------------------------------------	----------------------------------------------------------------------------------------------------------------------------------------------------------------------------------------------------------------------------------------------



I HEREBY CERTIFY THAT THIS IS AN SPECIFICATION OR REPORT WAS PREPARED BY ME OR UNDER MY DIRECT SUPERVISION AND THAT I AM A DULY LICENSED PROFESSIONAL ENGINEER UNDER THE LAWS OF THE STATE OF MINNESOTA.

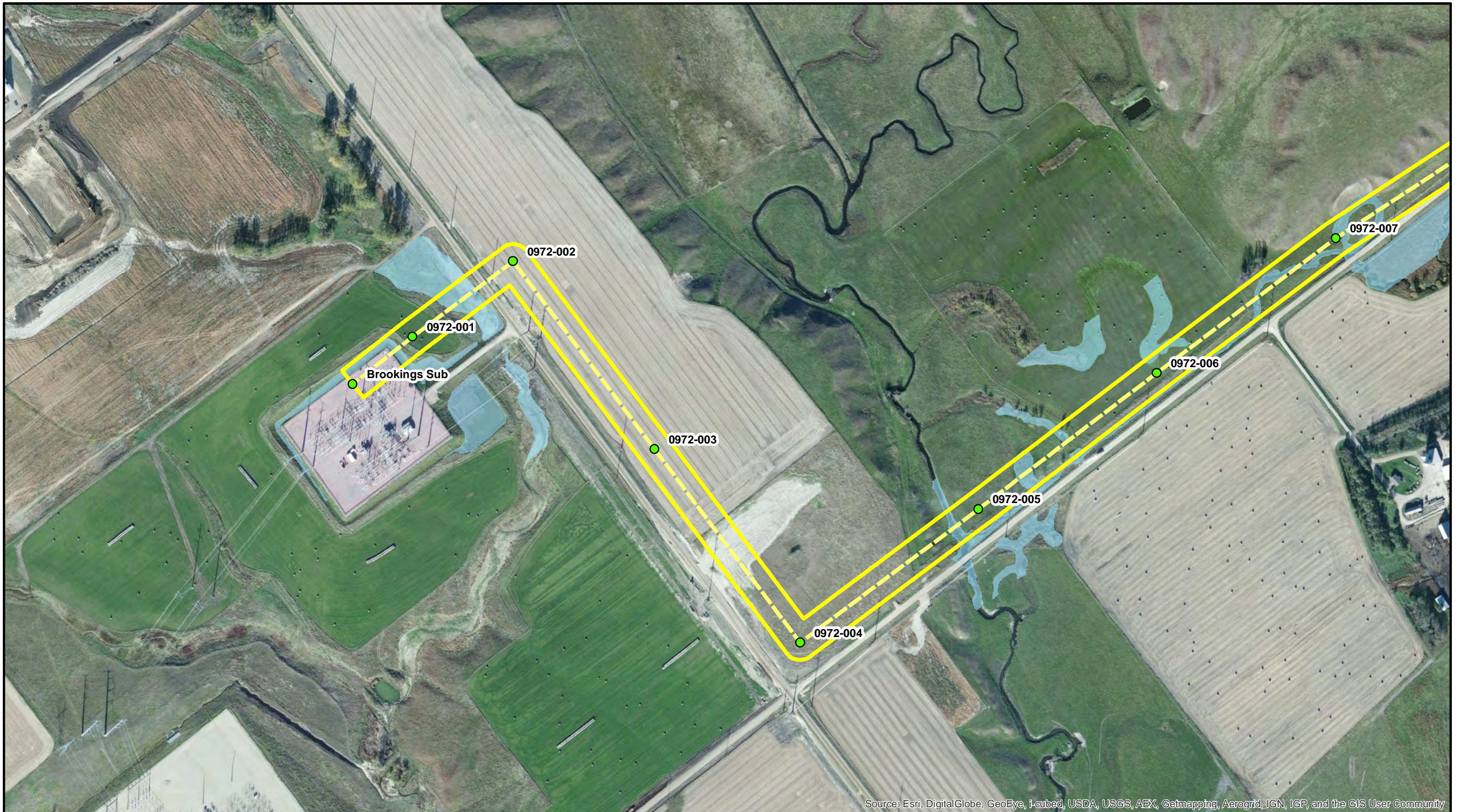
SIGNATURE: *Mark F. Junsemeyer*
 NAME (TYPED): MARK F. JUNSEMAYER
 OR (PRINTED)
 DATE: 08/20/2013 LICENSE #: 47815

NOTE: REFER TO THE STRUCTURE LIST FOR DETAILED DESIGN INFORMATION.

FILED UNDER: XXXX

	REVISIONS				APPROVALS		DATE		DESIGN DATA			200.0 FT. HORIZ. SCALE 40.0 FT. VERT. SCALE NORTH	DWG. NO. 0972-91D REVISION: 1 SHEET 11 OF 60
	1 ISSUED FOR SD PUC MWB MWB HWD 08/20/13	DRAWN BY: MWB DESIGN BY: MWB CHECKED BY: HWD APPROVED BY: MFJ	08/20/13 08/20/13 08/20/13 08/20/13	CONDUCTOR: 954 ACSS/TW 20/7 SHIELD WIRE: 3/8 EHS / DNO-8959 OPGW	BROOKINGS - LYON COUNTY 345 KV DOUBLE CIRCUIT TRANSMISSION LINE								

Path: \\mspe-gis-file\GISProj\GRE\160408\map_docs\final\PERMIT\TS\EnergyFacilityPermitting\Brookings_to_Lyon_SD_LineModMap.mxd



Source: Esri, DigitalGlobe, GeoEye, i-cubed, USDA, USGS, AEX, Getmapping, Aerogrid, IGN, IGP, and the GIS User Community



1:4,800

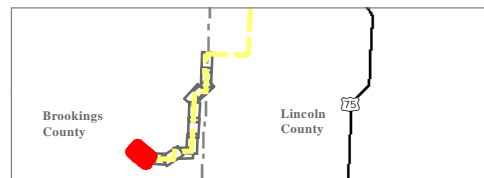


Date: 8/29/2013

Due to differences in accuracy between GIS and survey data, small shifts from the permitted route alignment may be observed.

Permitted alignment was generated in GIS. Modified alignment, pole locations, and 150 ft ROW was generated by land survey.

The area shown with masked aerial imagery is outside of the permitted route corridor.



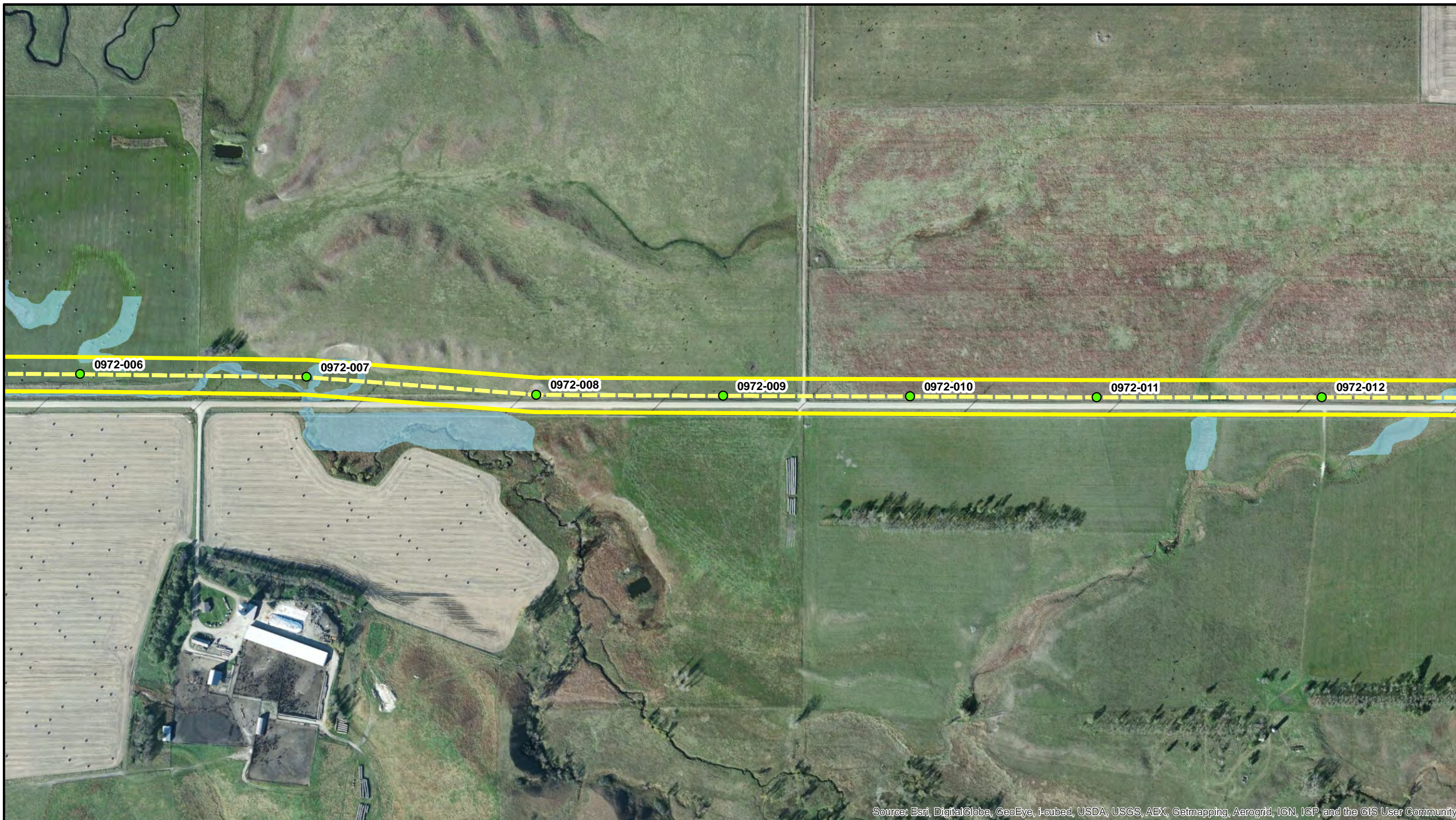
- Pole Location
- 150ft ROW
- Centerline
- Lake
- Wetland
- ~ Stream/River
- Railroad
- Section
- Township
- County

Alignment Maps Brookings to Lyon (SD)

Page 1 of 60

*Brookings County to Hampton
345 kV Transmission Line*

Path: \\mspe-gis-file\GISProj\GRE\160408\map_docs\final\PERMIT\TS\EnergyFacilityPermitting\Brookings_to_Lyon_SD_LineModMap.mxd



Source: Esri, DigitalGlobe, GeoEye, i-cubed, USDA, USGS, AEX, Getmapping, Aerogrid, IGN, IGP, and the GIS User Community

CapX2020

Delivering electricity you can rely on

1:4,800

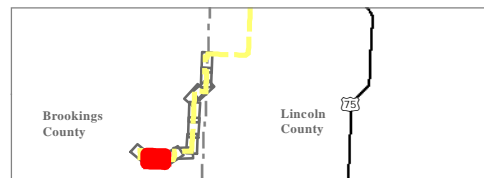


Date: 8/29/2013

Due to differences in accuracy between GIS and survey data, small shifts from the permitted route alignment may be observed.

Permitted alignment was generated in GIS. Modified alignment, pole locations, and 150 ft ROW was generated by land survey.

The area shown with masked aerial imagery is outside of the permitted route corridor.



- Pole Location
- 150ft ROW
- Centerline
- Lake
- Wetland
- Stream/River
- Railroad
- Section
- Township
- County

Alignment Maps
Brookings to Lyon (SD)

Page 2 of 60

*Brookings County to Hampton
345 kV Transmission Line*

Path: \\mspe-gis-file\GISProj\GRE\160408\map_docs\final\PERMIT\EnergyFacilityPermitting\Brookings_to_Lyon_SD_LineModMap.mxd



Source: Esri, DigitalGlobe, GeoEye, i-cubed, USDA, USGS, AEX, Getmapping, Aerogrid, IGN, IGP, and the GIS User Community

CapX2020
Delivering electricity you can rely on

1:4,800

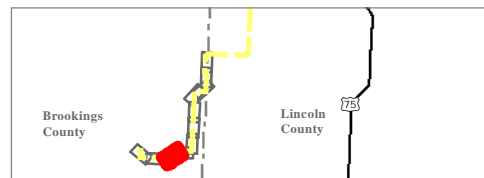



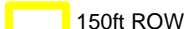








Date: 8/29/2013

Due to differences in accuracy between GIS and survey data, small shifts from the permitted route alignment may be observed.

Permitted alignment was generated in GIS. Modified alignment, pole locations, and 150 ft ROW was generated by land survey.

The area shown with masked aerial imagery is outside of the permitted route corridor.



-  Pole Location
-  150ft ROW
-  Centerline
-  Lake
-  Wetland
-  Stream/River
-  Railroad
-  Section
-  Township
-  County

Alignment Maps
Brookings to Lyon (SD)

Page 3 of 60

*Brookings County to Hampton
345 kV Transmission Line*

Path: \\mspe-gis-file\GISProj\GRE\160408\map_docs\final\PERMIT\EnergyFacilityPermitting\Brookings_to_Lyon_SD_LineModMap.mxd

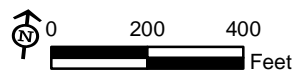


Source: Esri, DigitalGlobe, GeoEye, i-cubed, USDA, USGS, AEX, Getmapping, Aerogrid, IGN, IGP, and the GIS User Community

CapX2020

Delivering electricity you can rely on

1:4,800

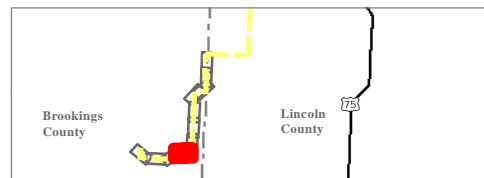


Date: 8/29/2013

Due to differences in accuracy between GIS and survey data, small shifts from the permitted route alignment may be observed.

Permitted alignment was generated in GIS. Modified alignment, pole locations, and 150 ft ROW was generated by land survey.

The area shown with masked aerial imagery is outside of the permitted route corridor.



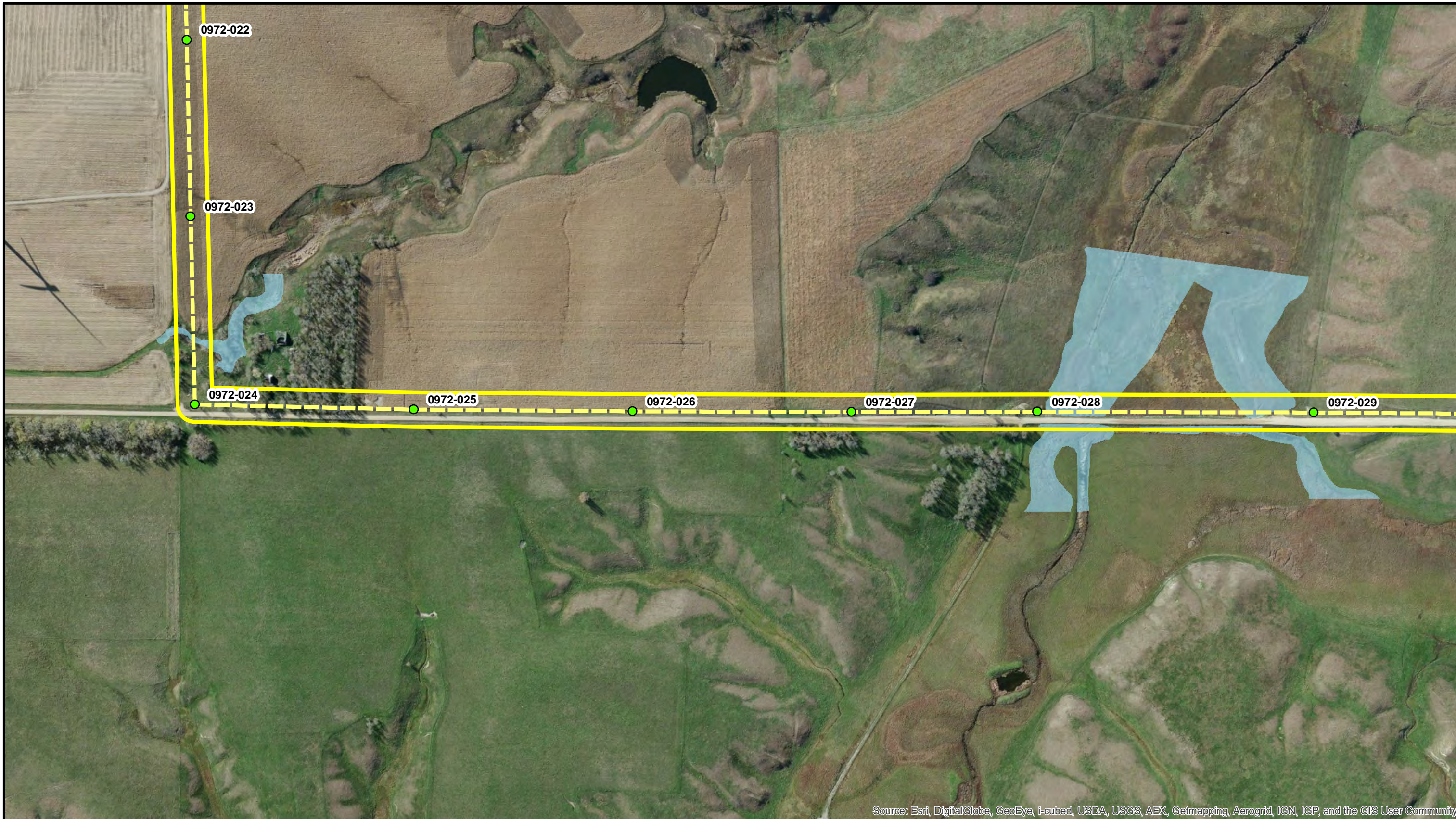
- Pole Location
- 150ft ROW
- Centerline
- Lake
- Wetland
- Stream/River
- Railroad
- Section
- Township
- County

Alignment Maps Brookings to Lyon (SD)

Page 4 of 60

*Brookings County to Hampton
345 kV Transmission Line*

Path: \\mspe-gis-file\GISProj\GRE\160408\map_docs\final\PERMIT\TS\EnergyFacilityPermitting\Brookings_to_Lyon_SD_LineModMap.mxd



Source: Esri, DigitalGlobe, GeoEye, i-cubed, USDA, USGS, AEX, Getmapping, Aerogrid, IGN, IGP, and the GIS User Community

CapX2020

Delivering electricity you can rely on

1:4,800

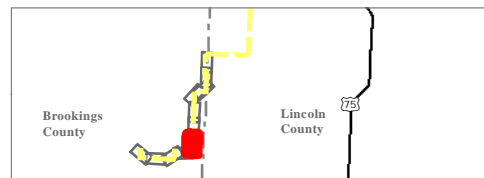


Date: 8/29/2013

Due to differences in accuracy between GIS and survey data, small shifts from the permitted route alignment may be observed.

Permitted alignment was generated in GIS. Modified alignment, pole locations, and 150 ft ROW was generated by land survey.

The area shown with masked aerial imagery is outside of the permitted route corridor.



- Pole Location
- 150ft ROW
- Centerline

- Lake
- Wetland
- Stream/River

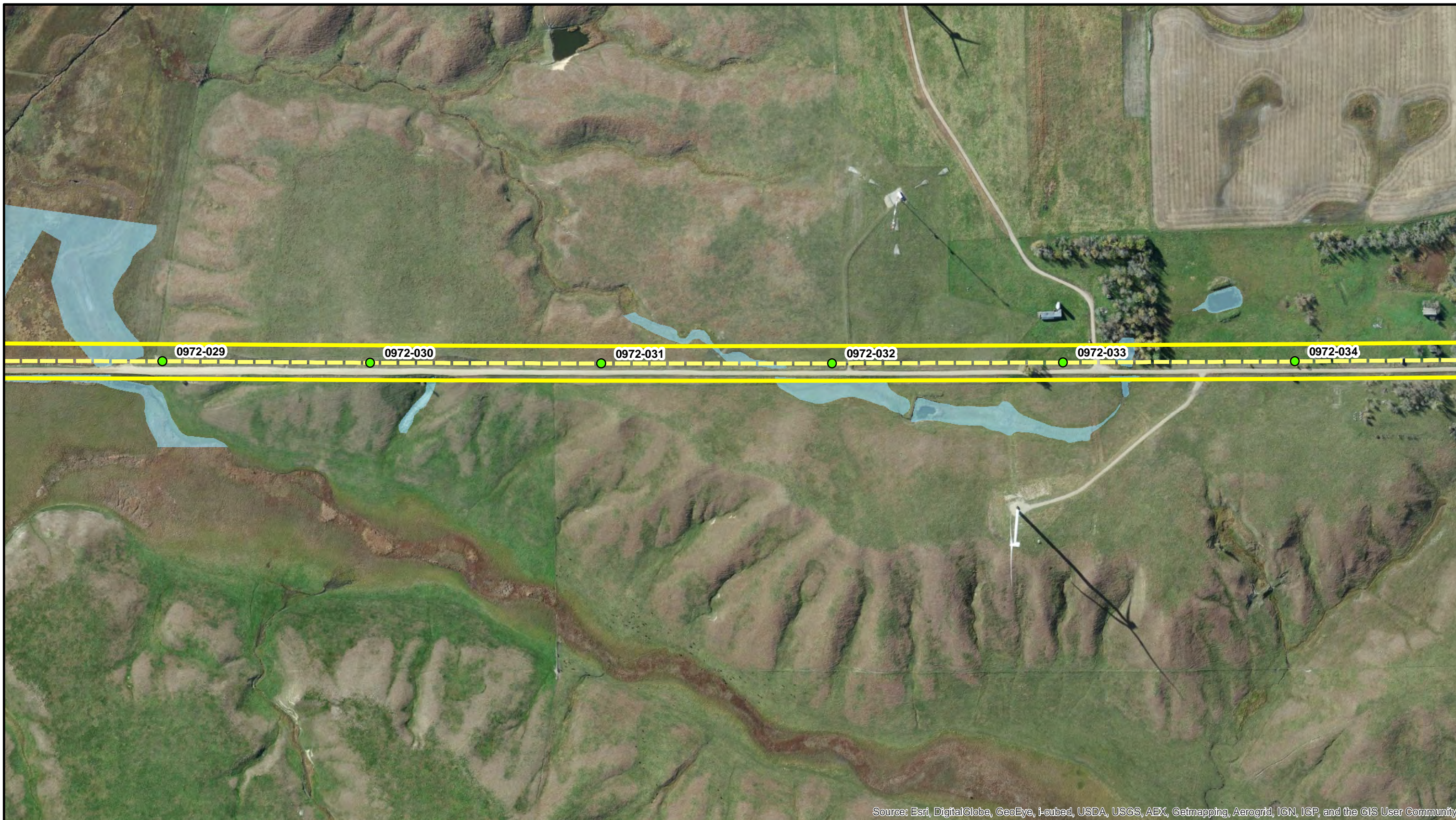
- Railroad
- Section
- Township
- County

Alignment Maps
Brookings to Lyon (SD)

Page 5 of 60

*Brookings County to Hampton
345 kV Transmission Line*

Path: \\mspe-gis-file\GISProj\GRE\160408\map_docs\final\PERMIT\TS\EnergyFacilityPermitting\Brookings_to_Lyon_SD_LineModMap.mxd

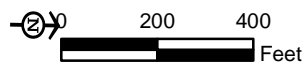


Source: Esri, DigitalGlobe, GeoEye, i-cubed, USDA, USGS, AEX, Getmapping, Aerogrid, IGN, IGP, and the GIS User Community

CapX2020

Delivering electricity you can rely on

1:4,800

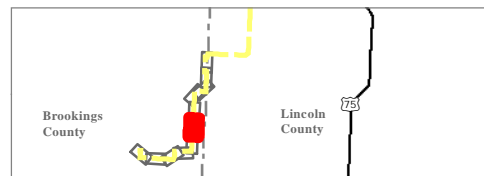


Date: 8/29/2013

Due to differences in accuracy between GIS and survey data, small shifts from the permitted route alignment may be observed.

Permitted alignment was generated in GIS. Modified alignment, pole locations, and 150 ft ROW was generated by land survey.

The area shown with masked aerial imagery is outside of the permitted route corridor.



- Pole Location
- 150ft ROW
- Centerline
- Lake
- Wetland
- Stream/River
- Railroad
- Section
- Township
- County

Alignment Maps
Brookings to Lyon (SD)

Page 6 of 60

*Brookings County to Hampton
345 kV Transmission Line*

Path: \\mspe-gis-file\GISProj\GRE\160408\map_docs\final\PERMIT\TS\EnergyFacilityPermitting\Brookings_to_Lyon_SD_LineModMap.mxd



Source: Esri, DigitalGlobe, GeoEye, i-cubed, USDA, USGS, AEX, Getmapping, Aerogrid, IGN, IGP, and the GIS User Community

CapX2020

Delivering electricity you can rely on

1:4,800

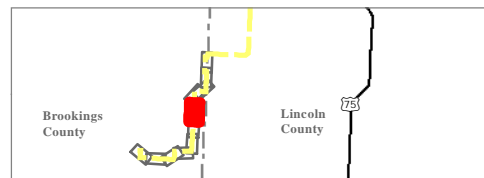


Date: 8/29/2013

Due to differences in accuracy between GIS and survey data, small shifts from the permitted route alignment may be observed.

Permitted alignment was generated in GIS. Modified alignment, pole locations, and 150 ft ROW was generated by land survey.

The area shown with masked aerial imagery is outside of the permitted route corridor.



- Pole Location
- 150ft ROW
- Centerline
- Lake
- Wetland
- Stream/River
- Railroad
- Section
- Township
- County

Alignment Maps Brookings to Lyon (SD)

Page 7 of 60

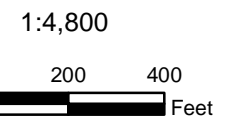
*Brookings County to Hampton
345 kV Transmission Line*

Path: \\mspe-gis-file\GISProj\GRE\160408\map_docs\final\PERMIT\EnergyFacilityPermitting\Brookings_to_Lyon_SD_LineModMap.mxd



Source: Esri, DigitalGlobe, GeoEye, i-cubed, USDA, USGS, AEX, Getmapping, Aerogrid, IGN, IGP, and the GIS User Community

T111N
R47W

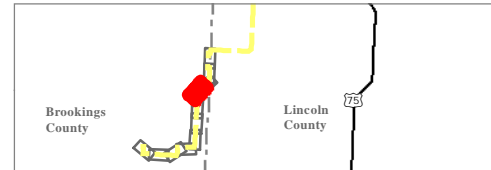


Date: 8/29/2013

Due to differences in accuracy between GIS and survey data, small shifts from the permitted route alignment may be observed.

Permitted alignment was generated in GIS. Modified alignment, pole locations, and 150 ft ROW was generated by land survey.

The area shown with masked aerial imagery is outside of the permitted route corridor.



- Pole Location
- 150ft ROW
- Centerline
- Lake
- Wetland
- ~ Stream/River
- Railroad
- Section
- Township
- County

Path: \\mspe-gis-file\GISProj\GRE\160408\map_docs\final\PERMIT\TS\EnergyFacilityPermitting\Brookings_to_Lyon_SD_LineModMap.mxd



Source: Esri, DigitalGlobe, GeoEye, I-cubed, USDA, USGS, AEX, Getmapping, Aerogrid, IGN, IGP, and the GIS User Community



1:4,800

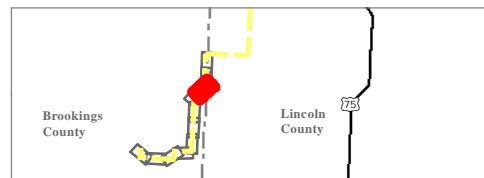


Date: 8/29/2013

Due to differences in accuracy between GIS and survey data, small shifts from the permitted route alignment may be observed.

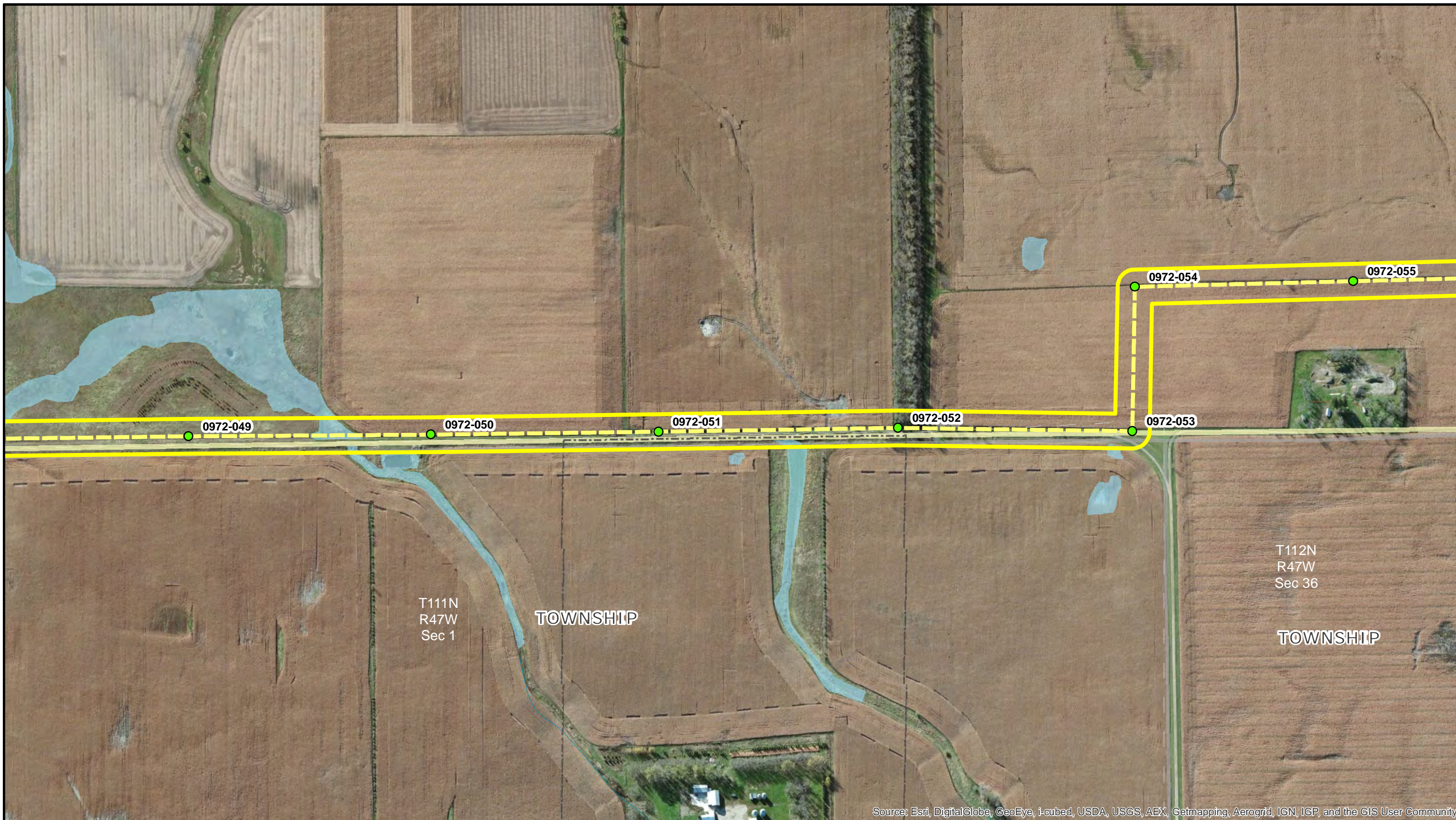
Permitted alignment was generated in GIS. Modified alignment, pole locations, and 150 ft ROW was generated by land survey.

The area shown with masked aerial imagery is outside of the permitted route corridor.



- Pole Location
- 150ft ROW
- Centerline
- Lake
- Wetland
- Stream/River
- Railroad
- Section
- Township
- County

Path: \\mspe-gis-file\GISProj\GRE\160408\map_docs\final\PERMIT\TS\EnergyFacilityPermitting\Brookings_to_Lyon_SD_LineModMap.mxd



Source: Esri, DigitalGlobe, GeoEye, i-cubed, USDA, USGS, AEX, Getmapping, Aerogrid, IGN, IGP, and the GIS User Community

CapX2020

Delivering electricity you can rely on

1:4,800

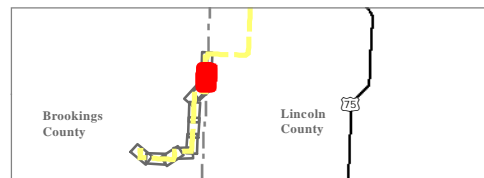


Date: 8/29/2013

Due to differences in accuracy between GIS and survey data, small shifts from the permitted route alignment may be observed.

Permitted alignment was generated in GIS. Modified alignment, pole locations, and 150 ft ROW was generated by land survey.

The area shown with masked aerial imagery is outside of the permitted route corridor.



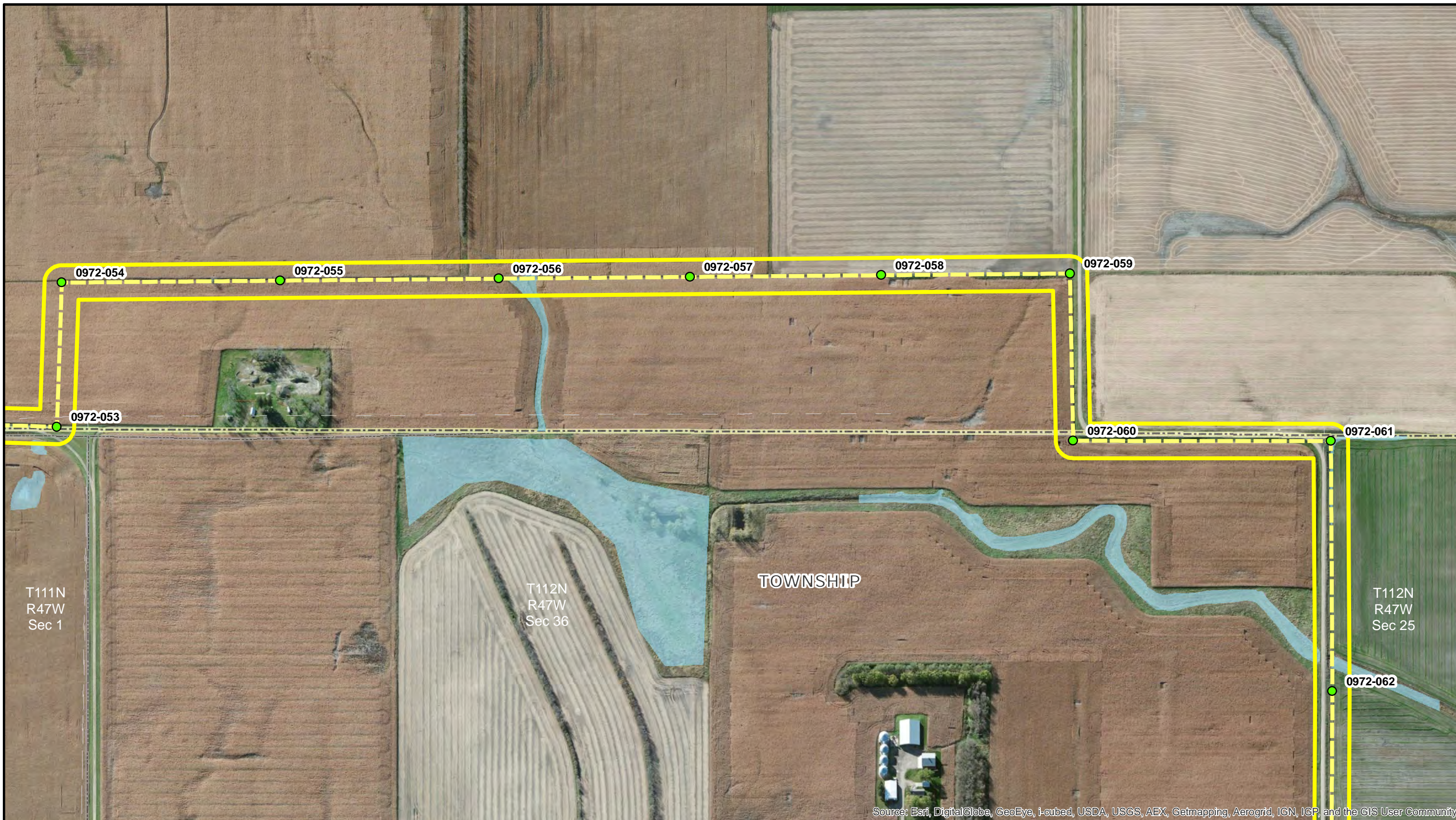
- Pole Location
- 150ft ROW
- Centerline
- Lake
- Wetland
- Stream/River
- Railroad
- Section
- Township
- County

Alignment Maps
Brookings to Lyon (SD)

Page 10 of 60

*Brookings County to Hampton
345 kV Transmission Line*

Path: \\mspe-gis-file\GISProj\GRE\160408\map_docs\final\PERMIT\TS\EnergyFacilityPermitting\Brookings_to_Lyon_SD_LineModMap.mxd



Source: Esri, DigitalGlobe, GeoEye, i-cubed, USDA, USGS, AEX, Getmapping, Aerogrid, IGN, IGP, and the GIS User Community



1:4,800

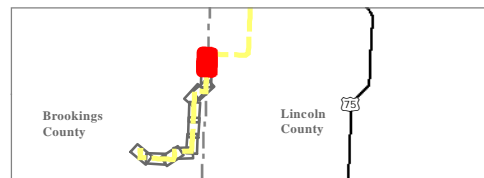


Date: 8/29/2013

Due to differences in accuracy between GIS and survey data, small shifts from the permitted route alignment may be observed.

Permitted alignment was generated in GIS. Modified alignment, pole locations, and 150 ft ROW was generated by land survey.

The area shown with masked aerial imagery is outside of the permitted route corridor.



- Pole Location
- 150ft ROW
- Centerline
- Lake
- Wetland
- Stream/River
- Railroad
- Section
- Township
- County

Alignment Maps Brookings to Lyon (SD)

Page 11 of 60

*Brookings County to Hampton
345 kV Transmission Line*