

Appendix F

Structural Drawings and Photographs

F.1 – Double Circuit 345 kV Transmission Line Photograph

F.2 – Double Circuit 345 kV Single Pole Structure with Davit Arm Configuration

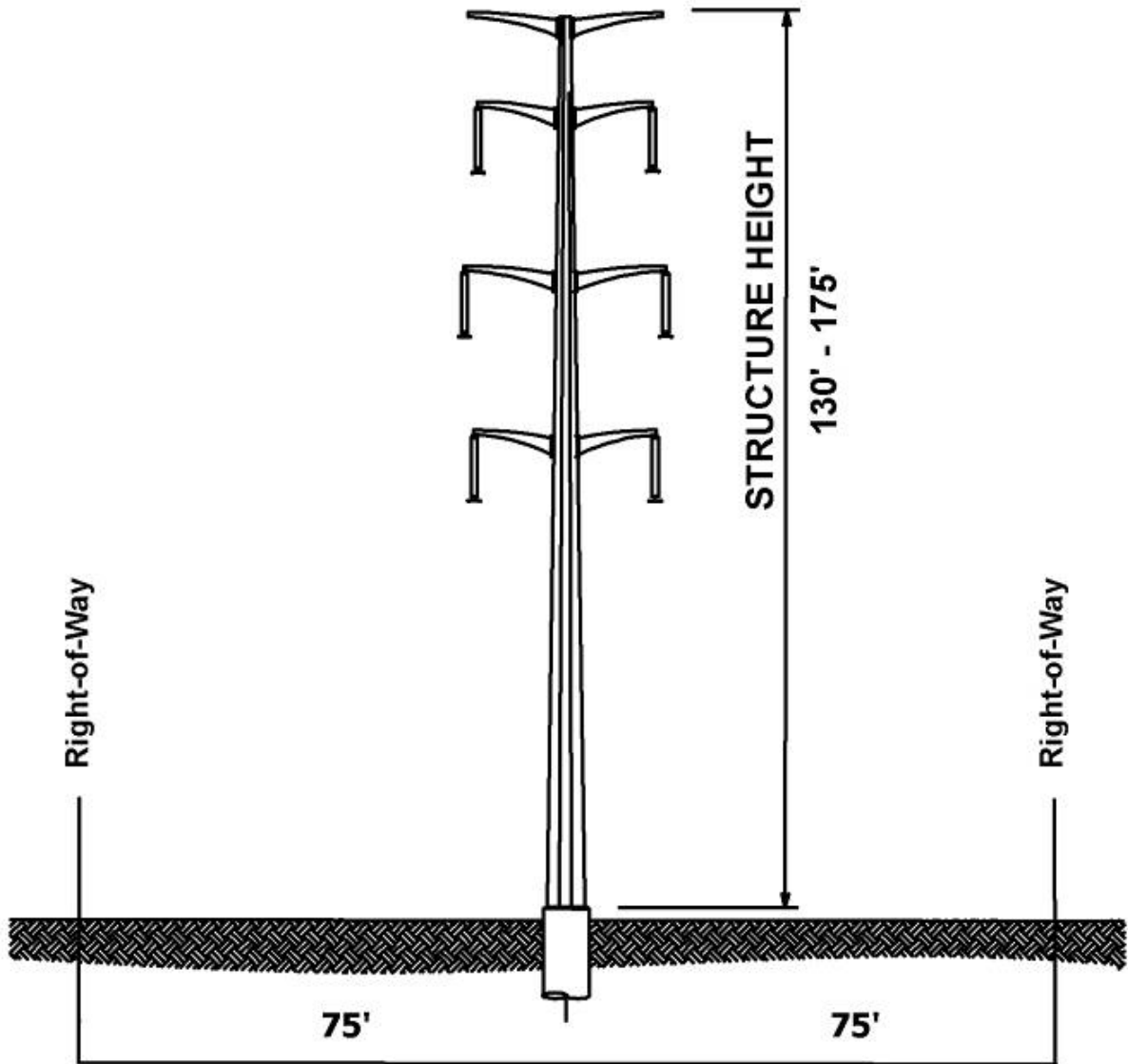
This page intentionally left blank.

F.1 - Double Circuit 345 kV Transmission Line Photograph



F.2 – Double Circuit 345 kV Single Pole Structure with Davit Arm Configuration

**Double Circuit 345 kV / 345 kV
Single Pole Structure (Davit Arm)**



**345 kV / 345 kV Line Typical Span
150' Typical Total Right-of-Way Width**