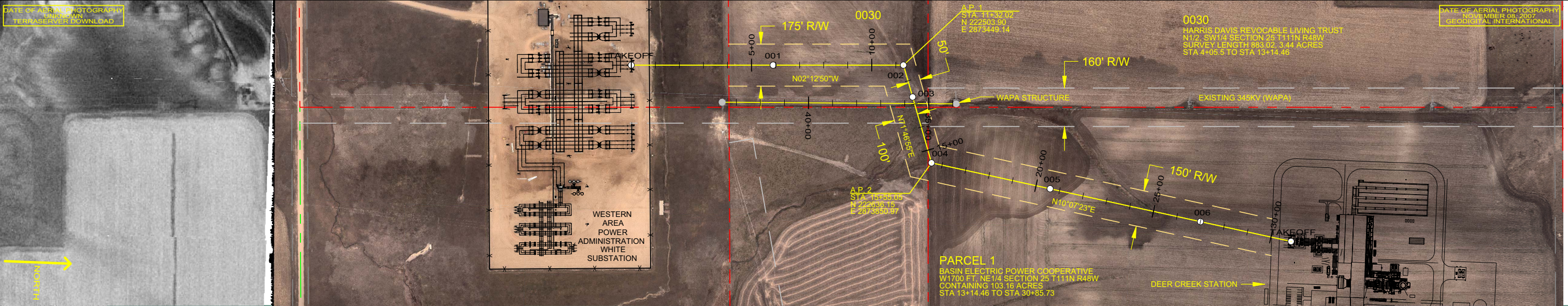


**Appendix F:  
Preliminary Engineering Drawings of the Electric  
Transmission Line and Structures**

Basin Electric Deer Creek Station Project

This page intentionally left blank.



STEEL A-FRAME  
 STA=0+00.00  
 TAKEOFF

HD3-090  
 STA=5+90.00  
 001  
 AP 1

HD3-070  
 STA=11+32.02  
 002  
 AP 2

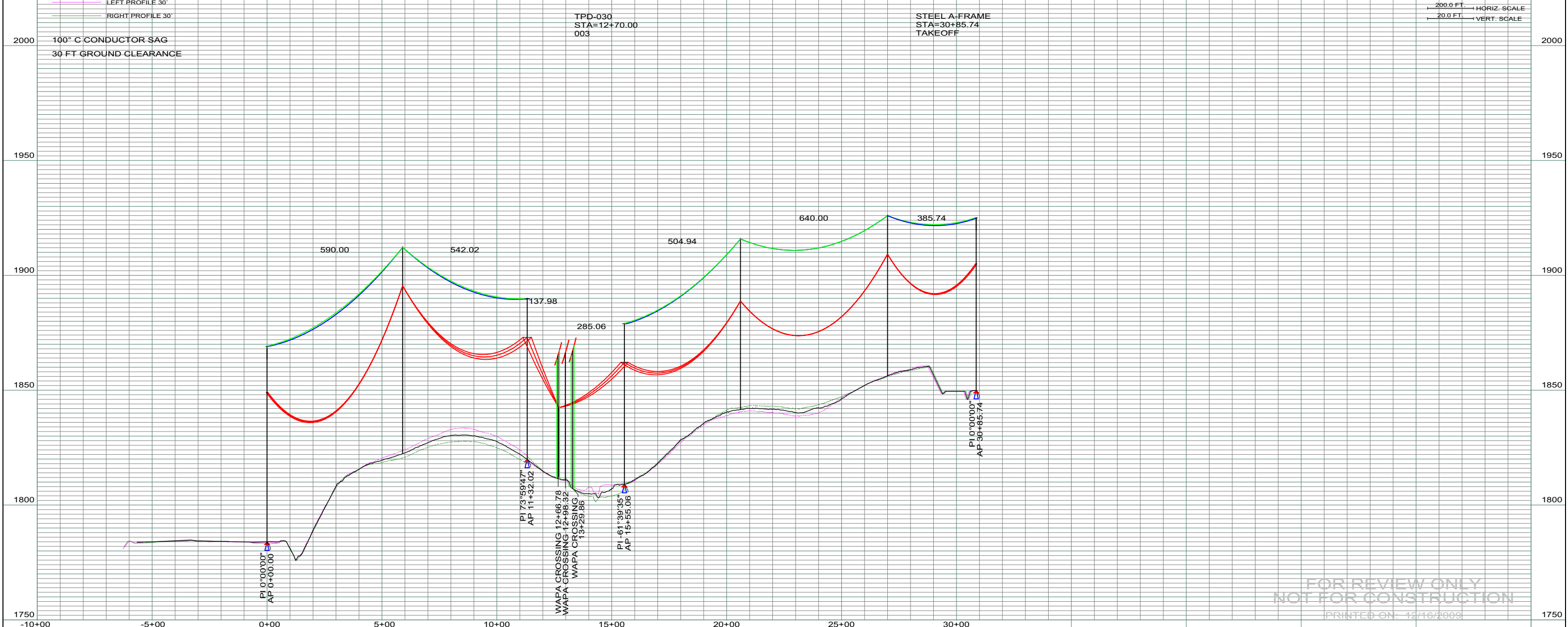
HD3-070  
 STA=15+55.06  
 004  
 AP 3

HS3-085  
 STA=20+60.00  
 005

HD3-070  
 STA=27+00.00  
 006

TPD-030  
 STA=12+70.00  
 003

STEEL A-FRAME  
 STA=30+85.74  
 TAKEOFF



FOR REVIEW ONLY  
 NOT FOR CONSTRUCTION  
 PRINTED ON: 12/16/2009

| REV | DESCRIPTION | DRWN | DSGN | APPD | DATE | REV | DESCRIPTION | DRWN | DSGN | APPD | DATE | STATE NAME: SOUTH DAKOTA | ZONE: SD NORTH 4001    | DESIGN BY: CDB | 10-29-09                         | FACILITY: TRANSMISSION SYSTEM MAINTENANCE                             |                        |                    |                                  |  |                        |
|-----|-------------|------|------|------|------|-----|-------------|------|------|------|------|--------------------------|------------------------|----------------|----------------------------------|---|------------------------|--------------------|----------------------------------|--|------------------------|
| 1   |             |      |      |      |      |     |             |      |      |      |      | DESIGN INFORMATION       |                        |                | 10-29-09                         | LOCATION UNIT: 478 - 345KV LINE - DEER CREEK TO WAPA WHITE SUBSTATION |                        |                    |                                  |  |                        |
| 2   |             |      |      |      |      |     |             |      |      |      |      | OHGW                     | 7/16" E.H.S. STEEL     | -              | -                                | VARIES  | VARIES                 | DESIGN CHK: SW     | 11-23-09                         | DEER CREEK 345KV TIE LINE<br>PLAN AND PROFILE<br>DEER CREEK STATION TO WAPA SUBSTATION |                        |
| 3   |             |      |      |      |      |     |             |      |      |      |      | CONDUCTOR                | 1272.0 KCMIL 45/7 ACSR | -              | 10,230                           | VARIES  | VARIES                 | DRAFT CHK:         |                                  |  |                        |
| 4   |             |      |      |      |      |     |             |      |      |      |      |                          |                        |                |                                  |   |                        | APPROVED: SW/DGE   | 11-24-09                         | SCALE: AS SHOWN  | COUNTY NAME: BROOKINGS |
|     |             |      |      |      |      |     |             |      |      |      |      |                          |                        |                | BASIN ELECTRIC POWER COOPERATIVE | 1717 EAST INTERSTATE AVENUE   | BISMARCK, NORTH DAKOTA | PHONE 701-223-0441 | BASIN DRAWING NO. 478-090-T3-001 | REV. 0   |                        |

