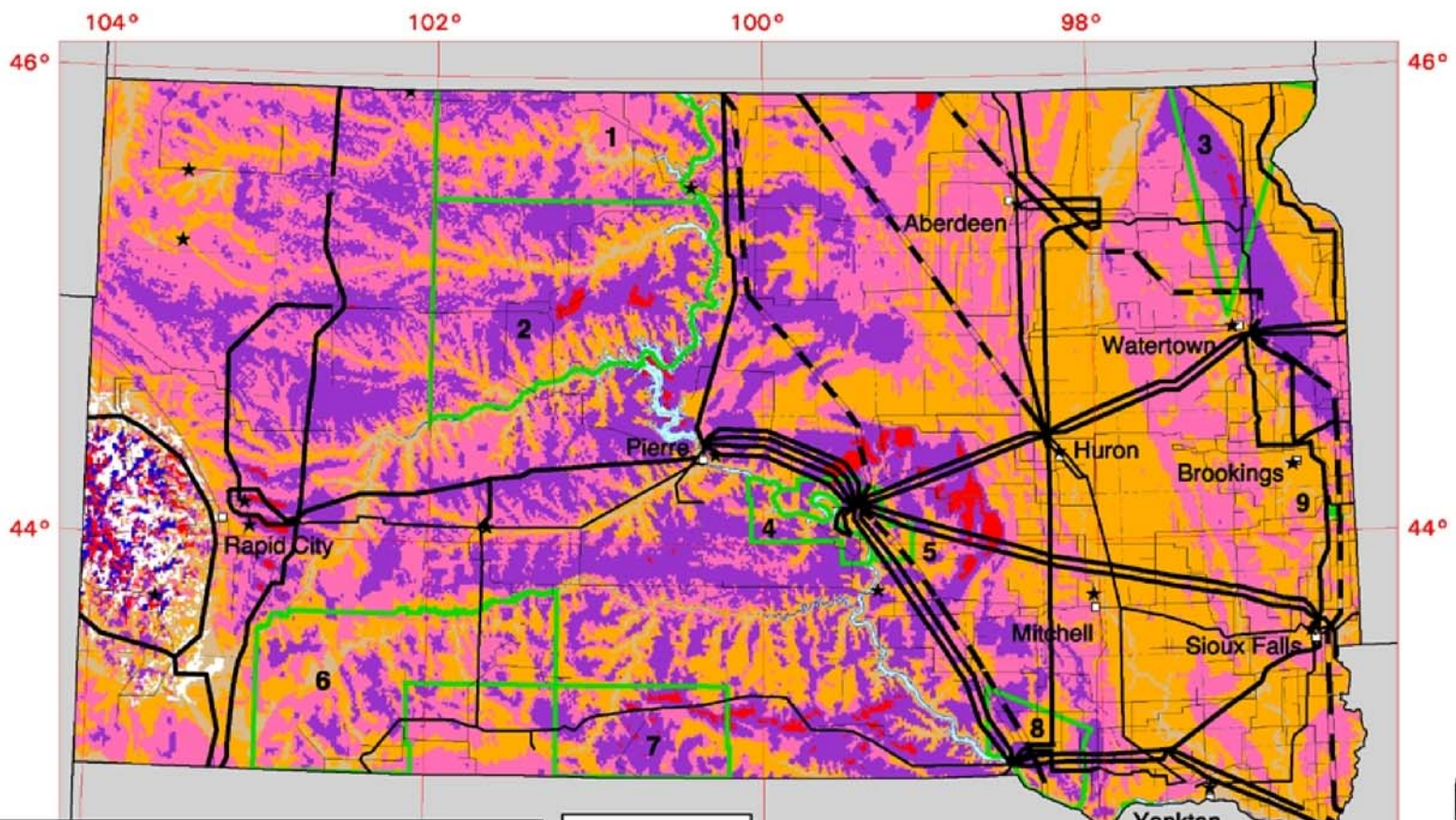


South Dakota - Wind Resource Map



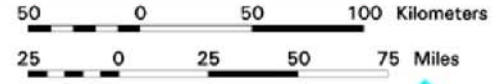
Wind Power Class	Resource Potential	Wind Power Density at 50 m W/m ²	Wind Speed ^a at 50 m m/s	Wind Speed ^a at 50 m mph
2	Marginal	200 - 300	5.6 - 6.4	12.5 - 14.3
3	Fair	300 - 400	6.4 - 7.0	14.3 - 15.7
4	Good	400 - 500	7.0 - 7.5	15.7 - 16.8
5	Excellent	500 - 600	7.5 - 8.0	16.8 - 17.9
6	Outstanding	600 - 800	8.0 - 8.8	17.9 - 19.7
7	Superb	800 - 1600	8.8 - 11.1	19.7 - 24.8

^a Wind speeds are based on a Weibull k value of 2.0


- Indian Reservations**
- 1 Standing Rock
 - 2 Cheyenne River
 - 3 Lake Traverse
 - 4 Lower Brule
 - 5 Crow Creek
 - 6 Pine Ridge
 - 7 Rosebud
 - 8 Yankton
 - 9 Flandreau

- ★ Meteorological Station with Wind Data
- City or Town

- Transmission Line Voltage**
- ~ 69 Kilovolts
 - ~ 115 Kilovolts
 - ~ 230 Kilovolts
 - ~ 345 Kilovolts



U.S. Department of Energy
National Renewable Energy Laboratory



Map Document: (\\mspe-gis-file\gisproj\PPM\179112\map_docs\mxd\SDPUCPermitBRILL_Figure2_WindRsc.mxd) 10/22/2008 -- 11:41:43 AM



Figure 2 - South Dakota Wind Resource Map
Buffalo Ridge II Wind Farm
Iberdrola Renewables
Brookings and Deuel Counties, SD