



March 19<sup>th</sup>, 2010

**RECEIVED**

**MAR 22 2010**

**SOUTH DAKOTA PUBLIC  
UTILITIES COMMISSION**

Patty Van Gerpen  
South Dakota Public Utilities Commission  
Suite 202, 124 South Euclid Ave.  
Pierre, SD 57501-3168

RE: EL08-031 - Buffalo Ridge II – updated transmission line and collector line design

Dear Ms. Van Gerpen:

Buffalo Ridge II, LLC proposes refining the electrical design for the Buffalo Ridge II Wind Project as we approach 2010 construction. Attached is a map of the original overhead 115 kV transmission line route and the 34.5 kV overhead transmission line routes and proposed changes. The proposed changes are shown on the map as yellow along the 115 kV line and green along the aboveground 34.5 kV collector line. All construction will be done within the confines of the permit and the "permit the box" approach of the permit. The reasons for the changes are summarized below.

This summary starts from the Brookings Substation:

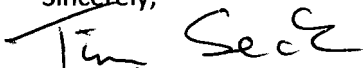
1. Instead of entering the Brookings Substation from the north, Xcel has asked that we enter the substation from the east side. Xcel Energy proposes to own the short span of 115 kV line from the substation to the other side of the road as indicated on the map.
2. Approximately 1.5 miles north of the Brookings Substation, to avoid an expensive arc around a house with the 115 kV line, the route was switched to the other side of the road for just over a mile.
3. Approximately 5.75 miles north of the Brookings Substation, a back and forth crossing of the road was avoided when a landowner agreed to a transmission line easement.
4. South of turbines W-3 and X-1, the 115 KV transmission line route was straightened when a landowner agreed to host the transmission line.
5. Directly north of the Buffalo Ridge II project substation, 3 miles of aboveground 34.5 kV collector line was added as this was a more cost effective option. This change minimizes the amount of ground disturbance due to trenching.
6. Approximately 2.25 miles of overhead 34.5 kV line was added at the very end of the aboveground 34.5 kV collector line route along the southern boundary of Deuel County. This change was made as it is also more cost-effective. This change minimizes the amount of ground disturbance due to trenching.

In all cases, the landowners have been informed of the changes and no opposition to the changes has been conveyed.

Please do not hesitate to contact me if I can provide any more information or if there are concerns about the proposed changes to the route.

We look forward to resuming work on the roads and foundations as soon as the weather permits.

Sincerely,



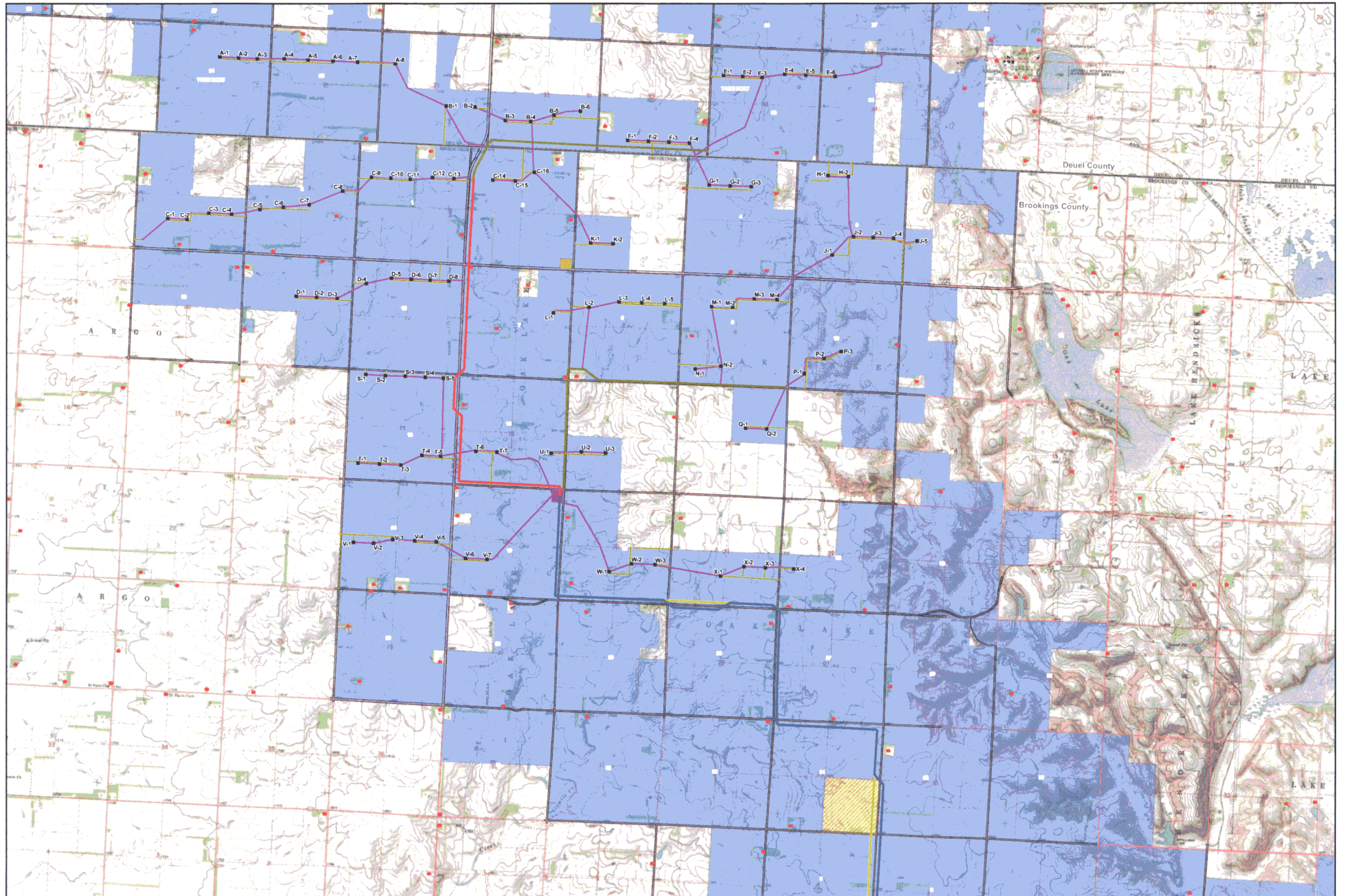
Tim Seck

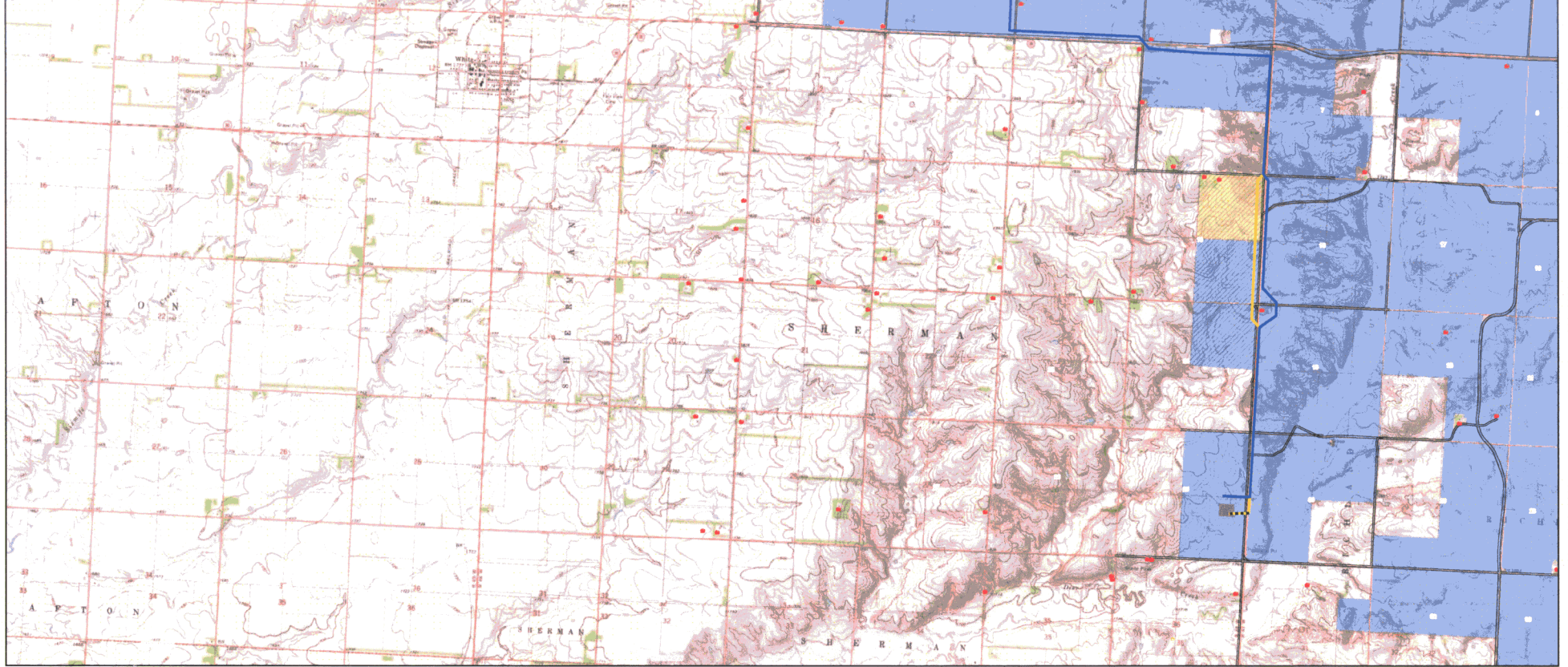
Director, Wind Development

RECEIVED

MAR 22 2010

SOUTH DAKOTA PUBLIC  
UTILITIES COMMISSION





**Legend**

- Homes
- Turbine, Proposed
- ⋯ Overhead Collector Line
- Underground Collector Line
- Proposed Access Road
- 115-kV/34.5-kV Transmission Corridor (Current)
- ⋯ Xcel 115-kV Transmission Corridor (Current)
- 34.5-kV Transmission Corridor (Current)
- 115-kV/34.5-kV Transmission Corridor (Oct. 2009)
- 34.5-kV Transmission Corridor (Oct. 2009)
- Proposed O&M Facility
- Brookings Substation
- Leased
- Transmission Line Easement
- Pending Transmission Line Easement
- No Lease
- County Line

## Project Facilities Map Buffalo Ridge II Wind Project

