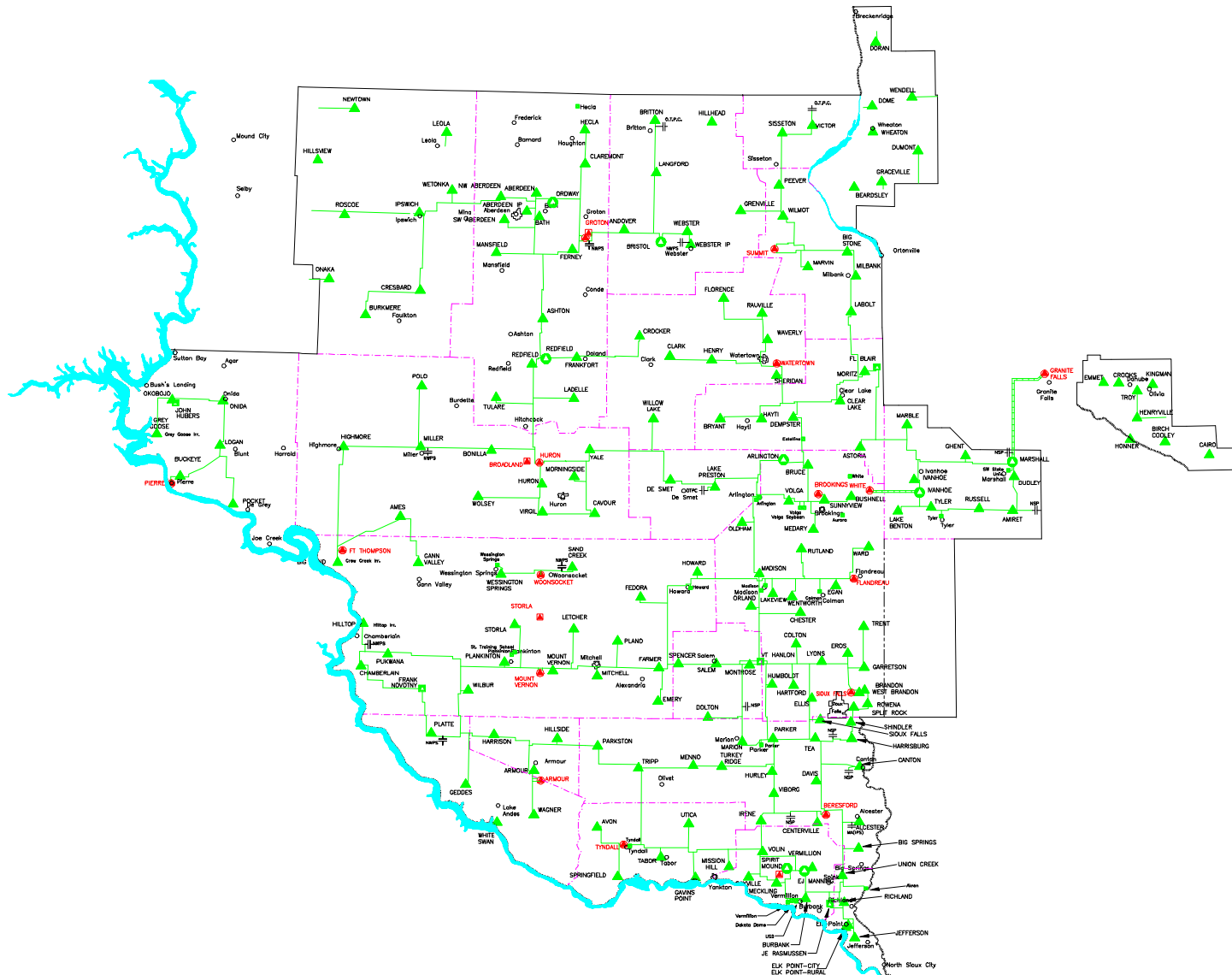


**Public Hearing
South Dakota Public Utility Commission
Groton, South Dakota**

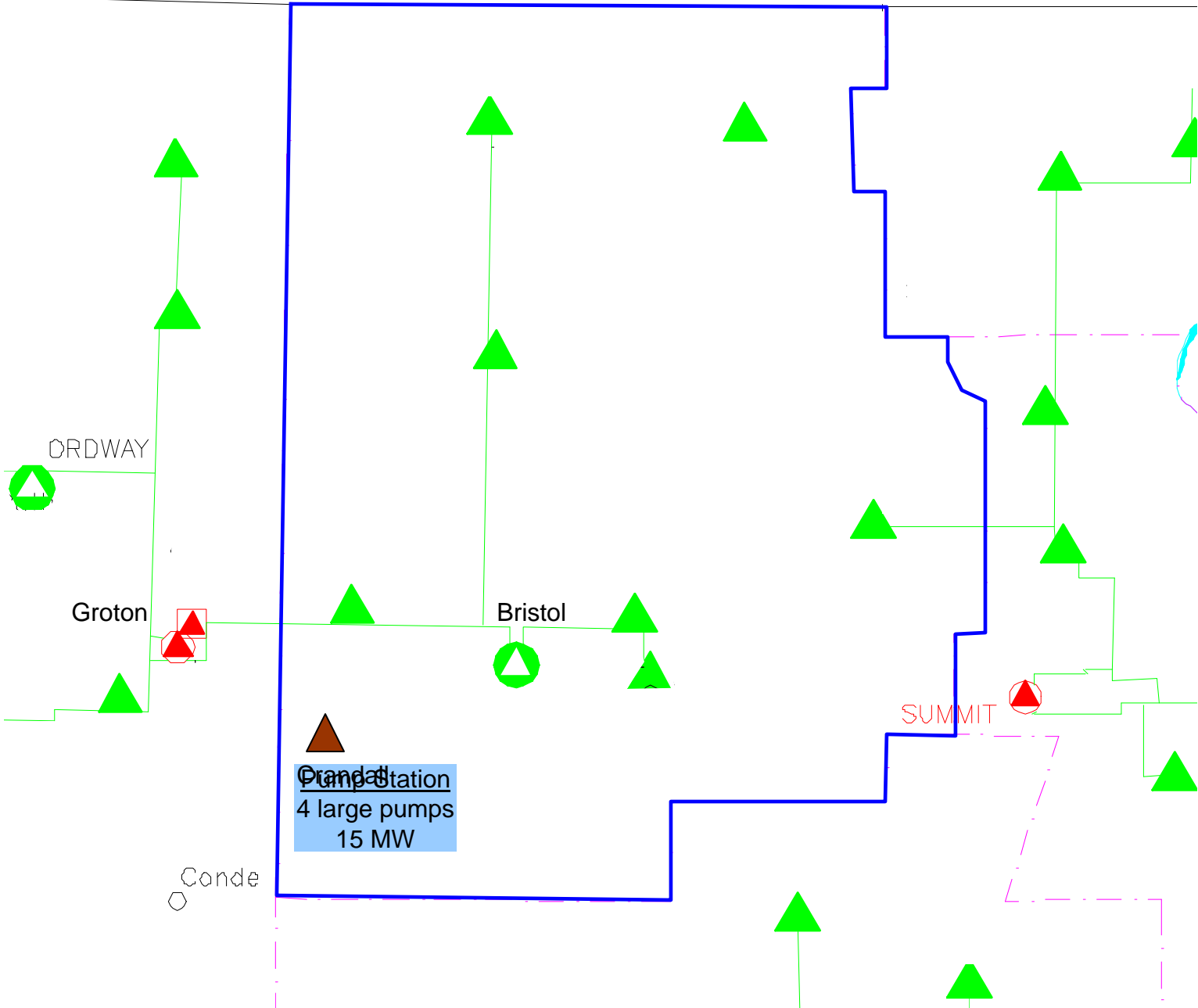
May 12, 2008

**East River Electric Power Cooperative
Application For Permit To Construct
Crandall 115 kV Line Tap**

East River Electric's Service Area

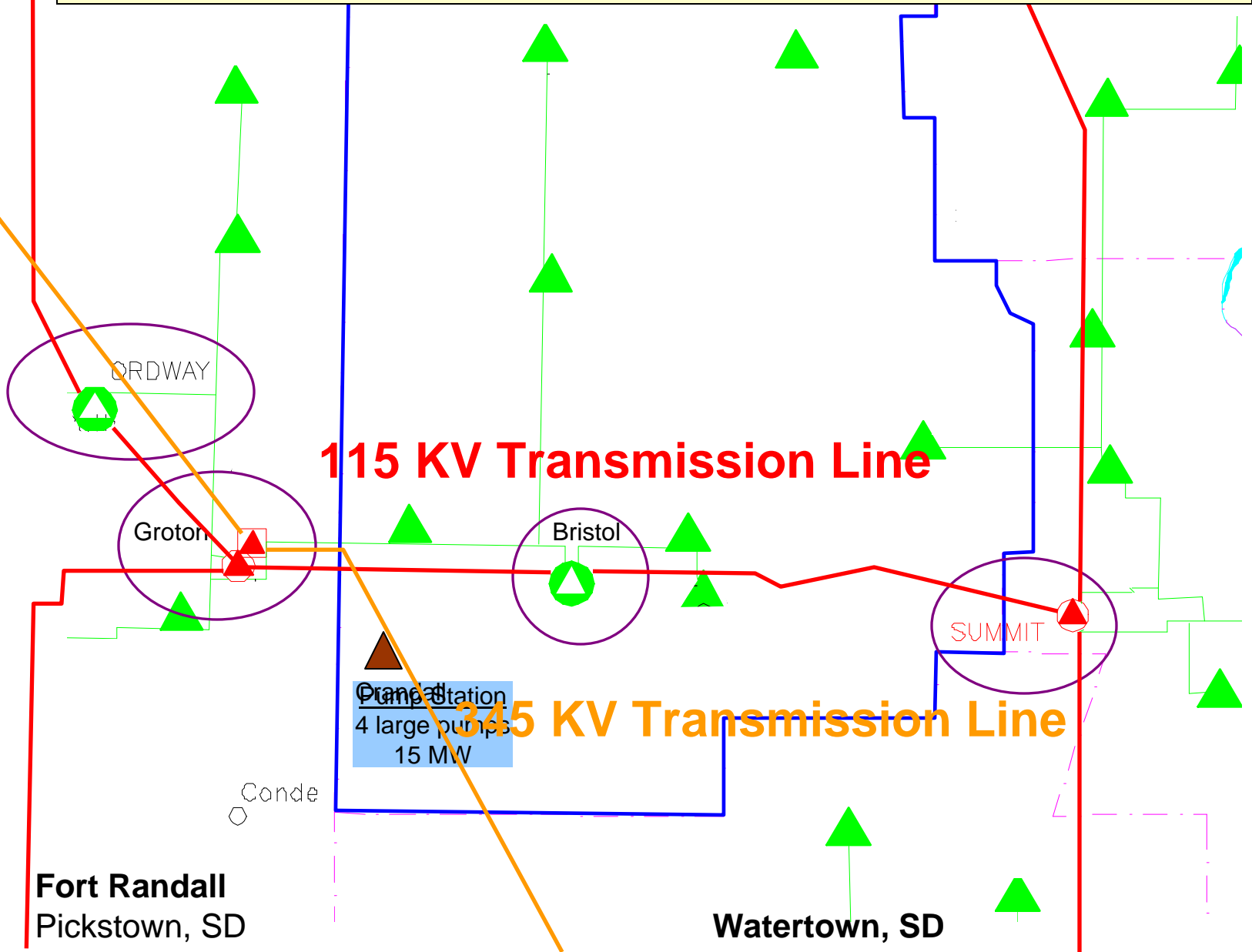


LAKE REGION ELECTRIC SERVICE AREA

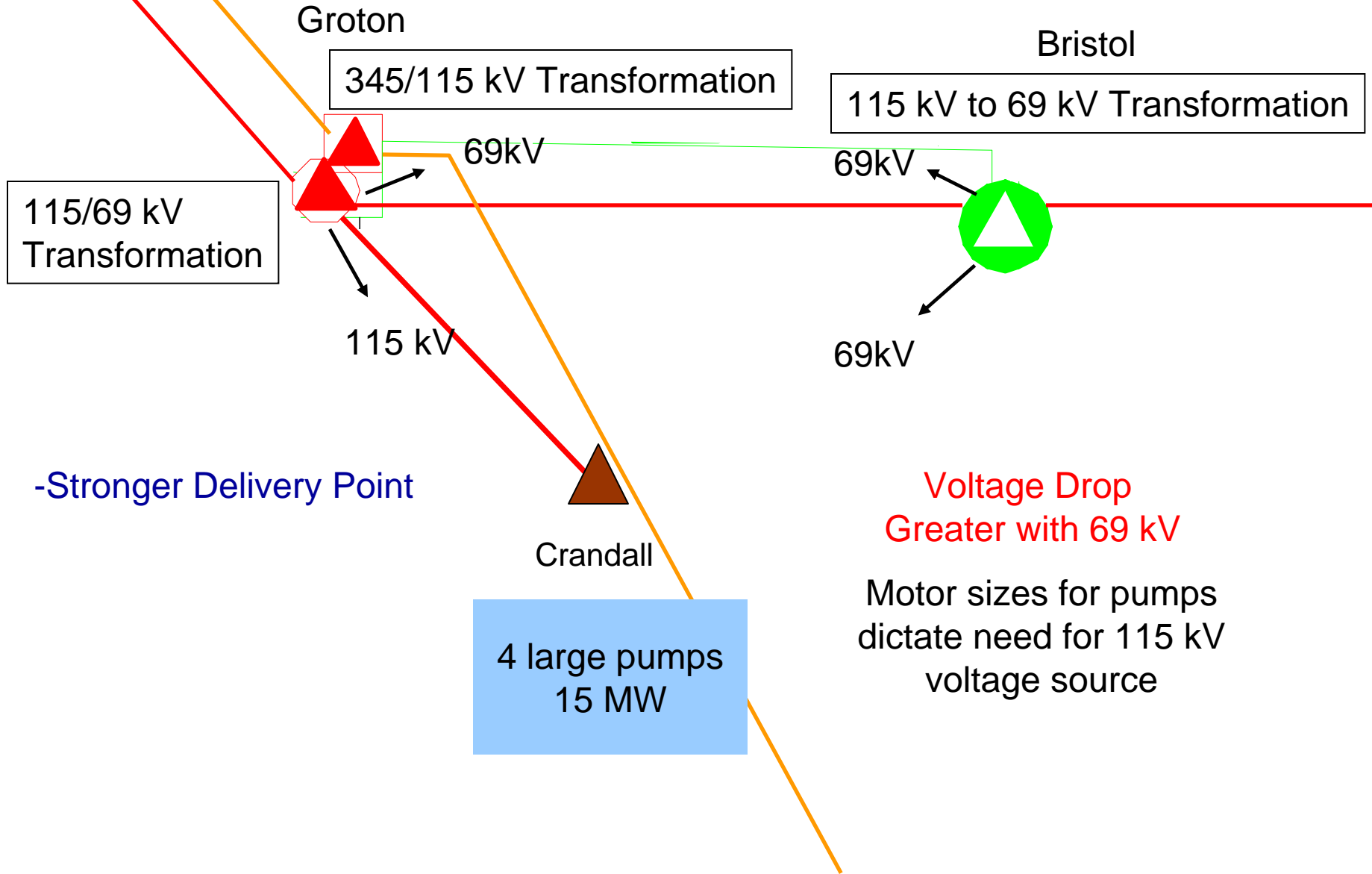




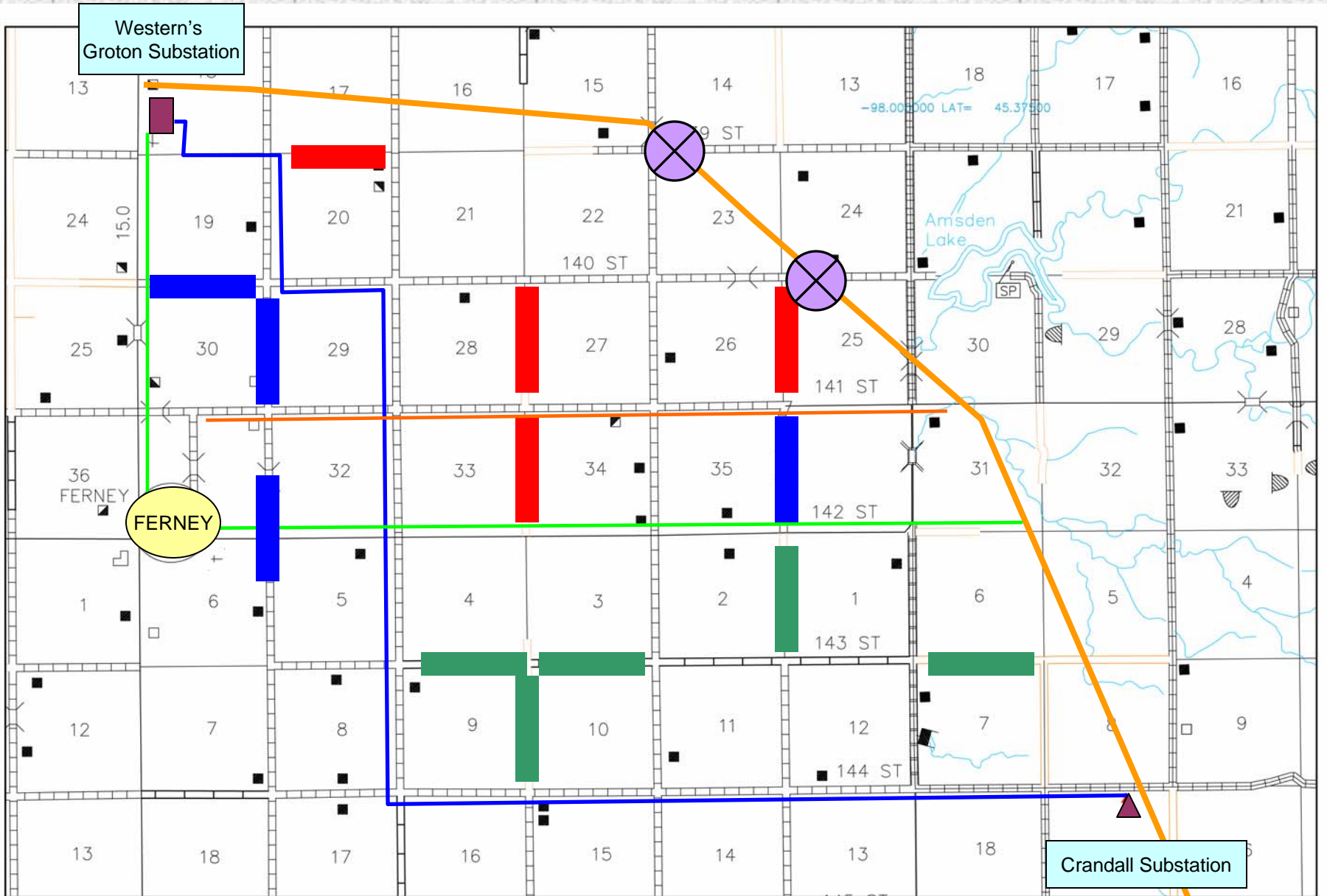
HIGH VOLTAGE DELIVERY SYSTEM



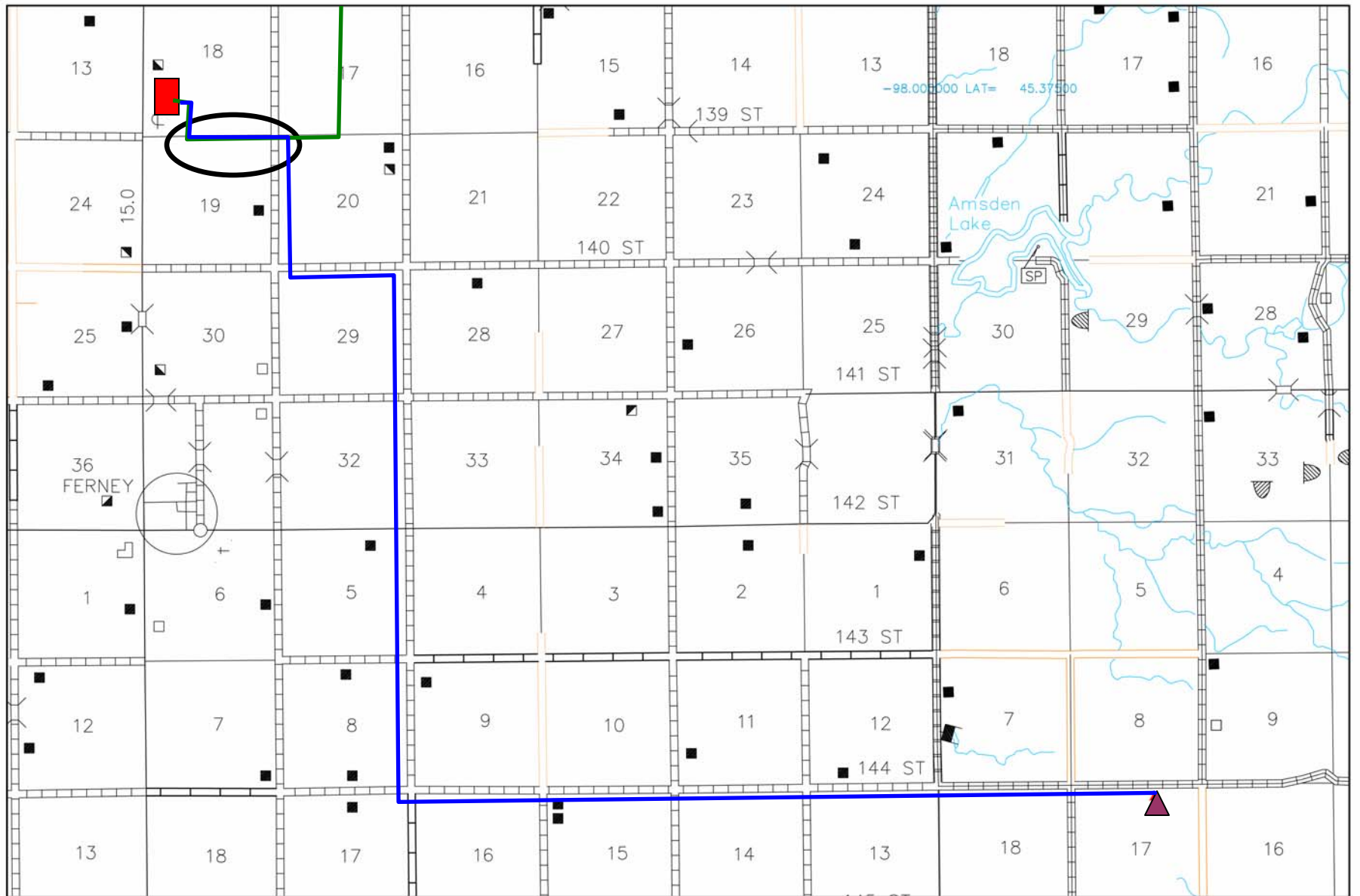
OPTIONS FOR PROJECT LINE ROUTE



Transmission Line Route



Transmission Structures







Single Pole Double Circuit 115/69 kV



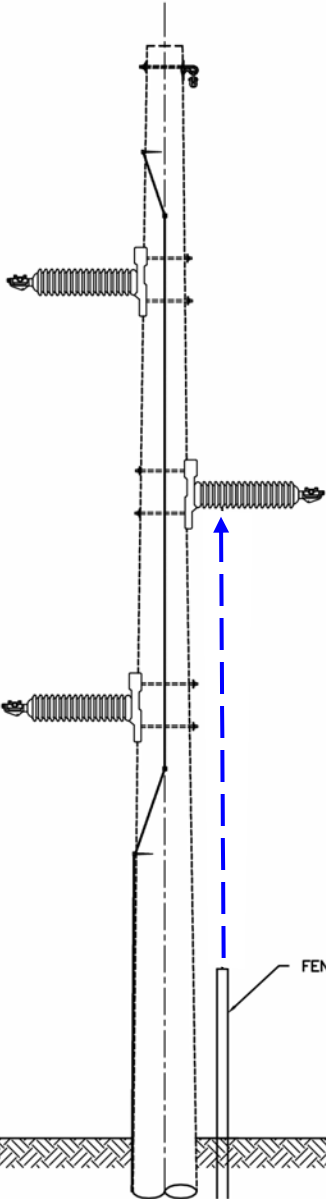
115 Kv Line Structure with 115 Kv Post Insulators



Line on Private Land

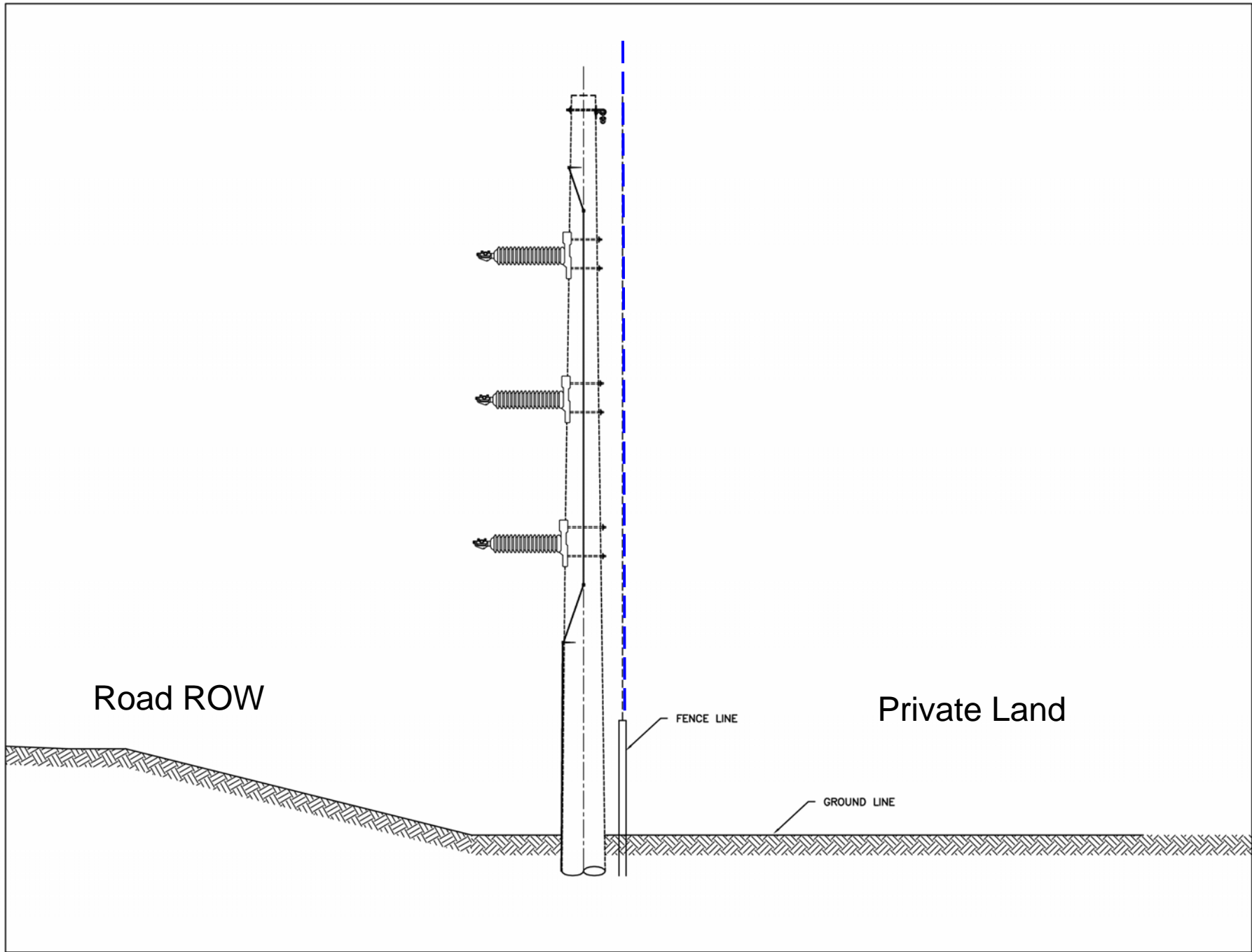
Road ROW

Private Land



FENCE LINE

GROUND LINE



Road ROW

Private Land

FENCE LINE

GROUND LINE

Approvals Required

- Six governmental agencies will have reviewed and approved before commencement of construction
 - U.S. Fish and Wildlife
 - U.S. Army Corp of Engineers
 - South Dakota Department of Natural Resources
 - South Dakota Department of Game Fish and Parks
 - South Dakota State Historical Society
 - South Dakota Public Utility Commission

County franchise obtained for both Brown and Day
Counties

Time frame for construction

Begin - Late 2008

Complete – Early 2009

Contact Information

Dan Wall

Manager Transmission/Engineering Services

Ron Golden

Land Management Supervisor

Jim Edwards

Assistant General Manager Operations

East River Electric Power Cooperative

605-256-4536

