

100.0 FT. HORIZ. SCALE  
20.0 FT. VERT. SCALE

THIS MAP/DOCUMENT IS A TOOL TO ASSIST EMPLOYEES IN THE PERFORMANCE OF THEIR JOB'S. YOUR PERSONAL SAFETY IS PROVIDED FOR BY USING SAFETY PRACTICES, PROCEDURES AND EQUIPMENT AS DESCRIBED IN THE SAFETY TRAINING PROGRAMS, MANUALS AND SPAR'S.

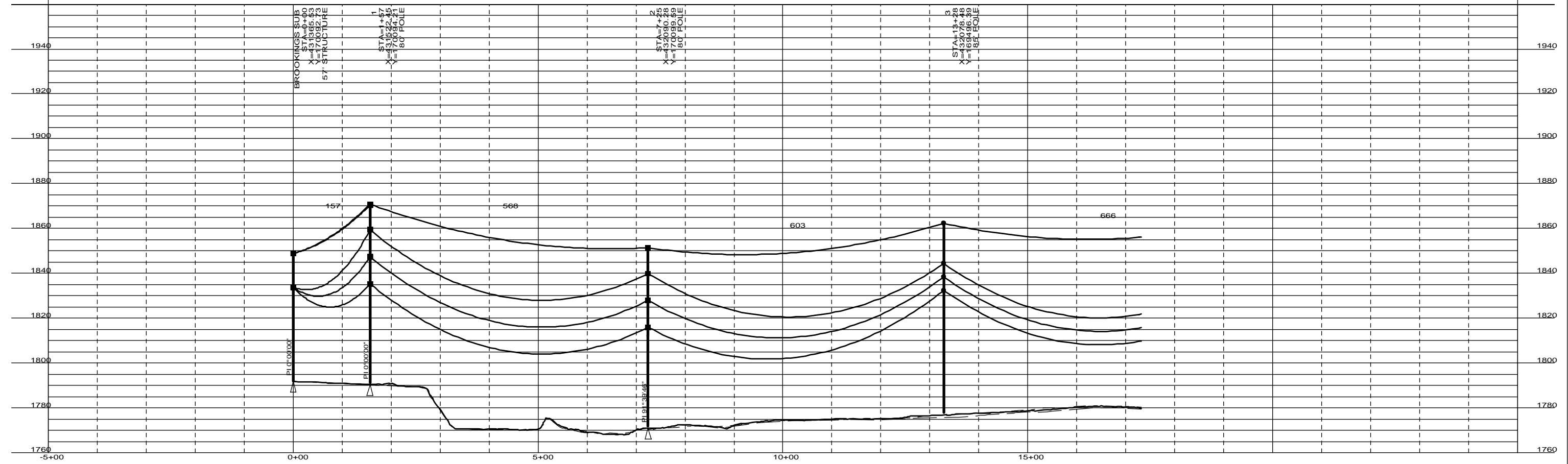


BROOKINGS SUB TO STR 01  
SHIELD: 2-3/8" EHS STEEL @ 1,000# D.T. @ HL  
COND: 6-795 MCM ACSS 26/7 @ 1,000# D.T. @ HL, RS=156 FT  
SW SAG TABLE NQ-XXXXXX-X, COND SAG TABLE NQ-XXXXXX-X  
SW SHOWN @ -20 DEG INITIAL, COND SHOWN @ 392 DEG FINAL

STR 01 TO STR 02  
SHIELD: 1-3/8" EHS STEEL @ 3,650# D.T. @ HL  
COND: 6-795 MCM ACSS 26/7 @ 7,650# D.T. @ HL, RS=568 FT  
SW SAG TABLE NQ-XXXXXX-X, COND SAG TABLE NQ-XXXXXX-X  
SW SHOWN @ -20 DEG INITIAL, COND SHOWN @ 392 DEG FINAL

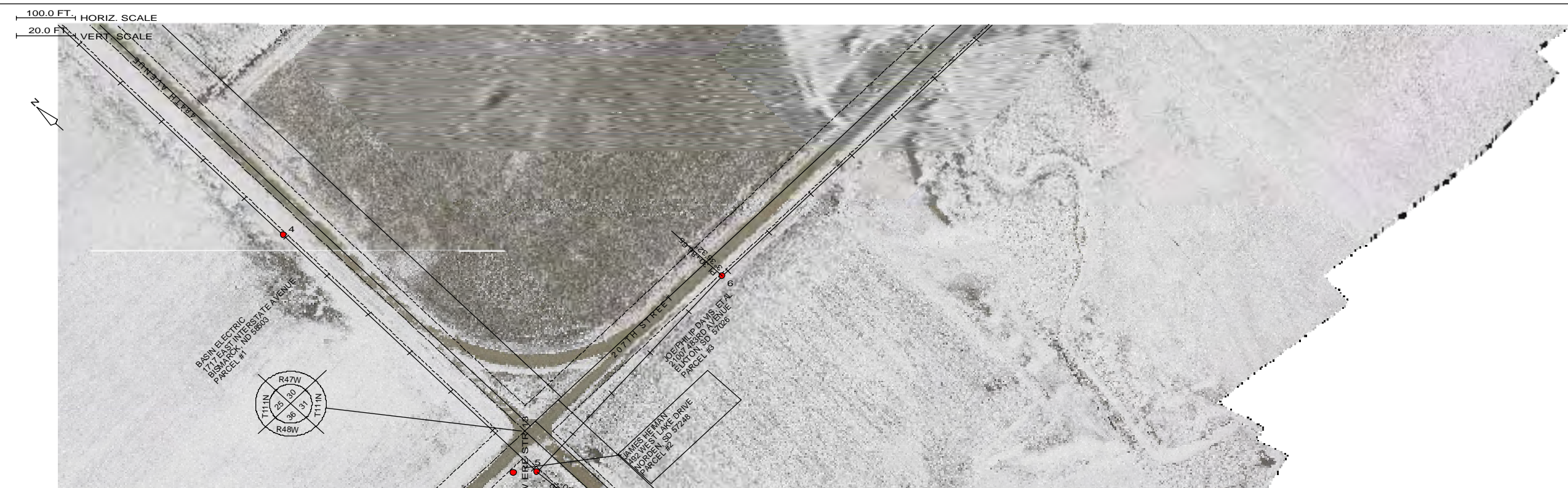
STR 02 TO STR 05  
SHIELD: 1-3/8" EHS STEEL @ 3,850# D.T. @ HL  
COND: 6-795 MCM ACSS 26/7 @ 7,950# D.T. @ HL, RS=629 FT  
SW SAG TABLE NQ-XXXXXX-X, COND SAG TABLE NQ-XXXXXX-X  
SW SHOWN @ -20 DEG INITIAL, COND SHOWN @ 392 DEG FINAL

NOTES:  
1. SINGLE PHASE DISTRIBUTION TO BE RELOCATED BETWEEN STRS 02 - 05.



01/13/2009  
**PRELIMINARY**

ENGINEERING DEPARTMENT, MINNEAPOLIS, MN		LINE NO. 5547	NH-202027-02	REV
CONFIDENTIAL: DO NOT COPY OR DISTRIBUTE TO OTHERS WITHOUT EXPRESS WRITTEN CONSENT FROM XCEL ENERGY.				
L5547_V13 1/13/2009				

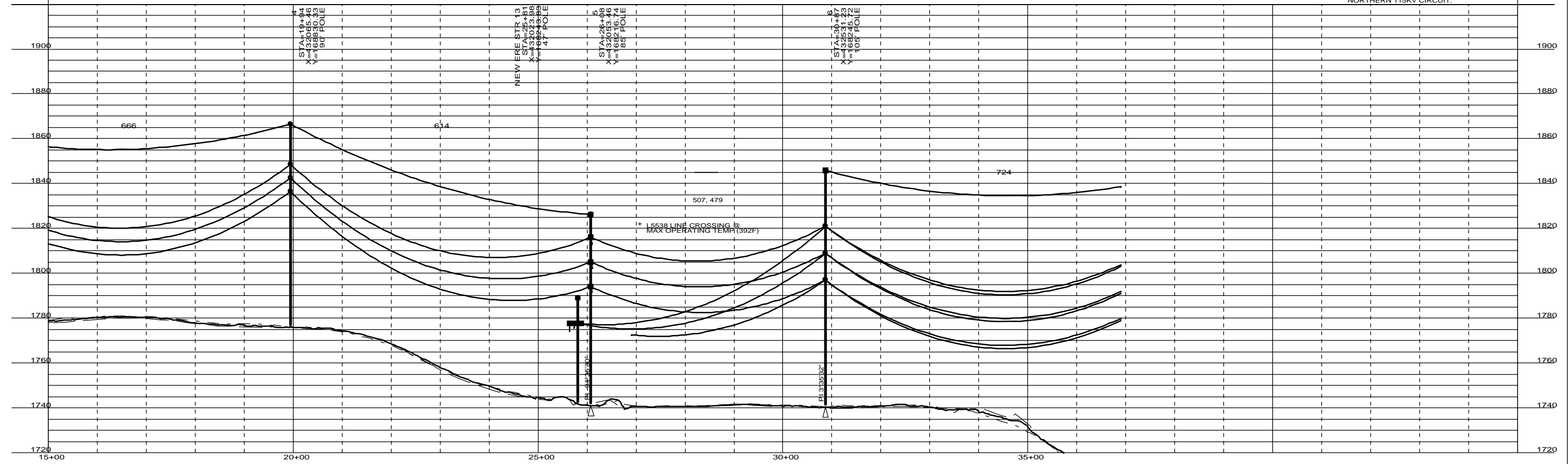


THIS MAP/DOCUMENT IS A TOOL TO ASSIST EMPLOYEES IN THE PERFORMANCE OF THEIR JOB'S. YOUR PERSONAL SAFETY IS PROVIDED FOR BY USING SAFETY PRACTICES, PROCEDURES AND EQUIPMENT AS DESCRIBED IN THE SAFETY TRAINING PROGRAMS, MANUALS AND SPAR'S.

STR 02 TO STR 05  
 SHIELD: 1-3/8" EHS STEEL @ 3,850# D.T. @ HL  
 COND: 6-795 MCM ACSS 26/7 @ 7,950# D.T. @ HL, RS=629 FT  
 SW SAG TABLE NO-XXXXXX-X, COND SAG TABLE NO-XXXXXX-X  
 SW SHOWN @ -20 DEG INITIAL, COND SHOWN @ 392 DEG FINAL

STR 05 TO STR 21  
 SHIELD: 1-3/8" EHS STEEL @ 4,000# D.T. @ HL  
 COND: 6-795 MCM ACSS 26/7 @ 8,100# D.T. @ HL, RS=673 FT  
 SW SAG TABLE NO-XXXXXX-X, COND SAG TABLE NO-XXXXXX-X  
 SW SHOWN @ -20 DEG INITIAL, COND SHOWN @ 392 DEG FINAL

- NOTES:
1. SINGLE PHASE DISTRIBUTION TO BE RELOCATED BETWEEN STRS 02 - 05.
  2. DOUBLE CIRCUIT WITH EAST RIVER ELECTRIC BETWEEN STRS 06 - 21.
  3. EAST RIVER ELECTRIC IS NORTHERN 115KV CIRCUIT.



**01/13/2009**  
**PRELIMINARY**

CONFIDENTIAL: DO NOT COPY OR DISTRIBUTE TO OTHERS WITHOUT EXPRESS WRITTEN CONSENT FROM XCEL ENERGY.

ENGINEERING DEPARTMENT, MINNEAPOLIS, MN	LINE NO. 5547	NH-202027-03	REV

L5547\_V13 1/13/2009

100.0 FT. HORIZ. SCALE  
20.0 FT. VERT. SCALE

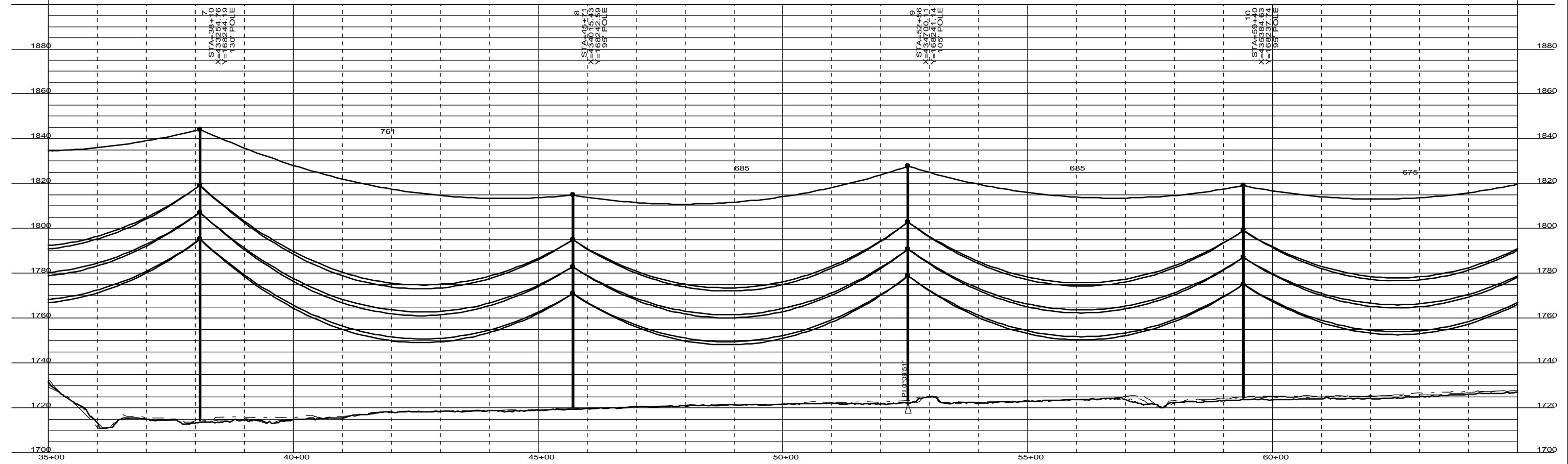


THIS MAP/DOCUMENT IS A TOOL TO ASSIST EMPLOYEES IN THE PERFORMANCE OF THEIR JOB'S. YOUR PERSONAL SAFETY IS PROVIDED FOR BY USING SAFETY PRACTICES, PROCEDURES AND EQUIPMENT AS DESCRIBED IN THE SAFETY TRAINING PROGRAMS, MANUALS AND SPAR'S.



STR 05 TO STR 21  
SHIELD: 1-3/8" EHS STEEL @ 4,000# D.T. @ HL  
COND: 6-795 MCM ACSS 26/7 @ 8,100# D.T. @ HL, RS=673 FT  
SW SAG TABLE NQ-XXXXXX-X, COND SAG TABLE NQ-XXXXXX-X  
SW SHOWN @ -20 DEG INITIAL, COND SHOWN @ 392 DEG FINAL

NOTES:  
1. DOUBLE CIRCUIT WITH EAST RIVER ELECTRIC BETWEEN STRS 06 - 21.  
2. EAST RIVER ELECTRIC IS NORTHERN 115KV CIRCUIT.

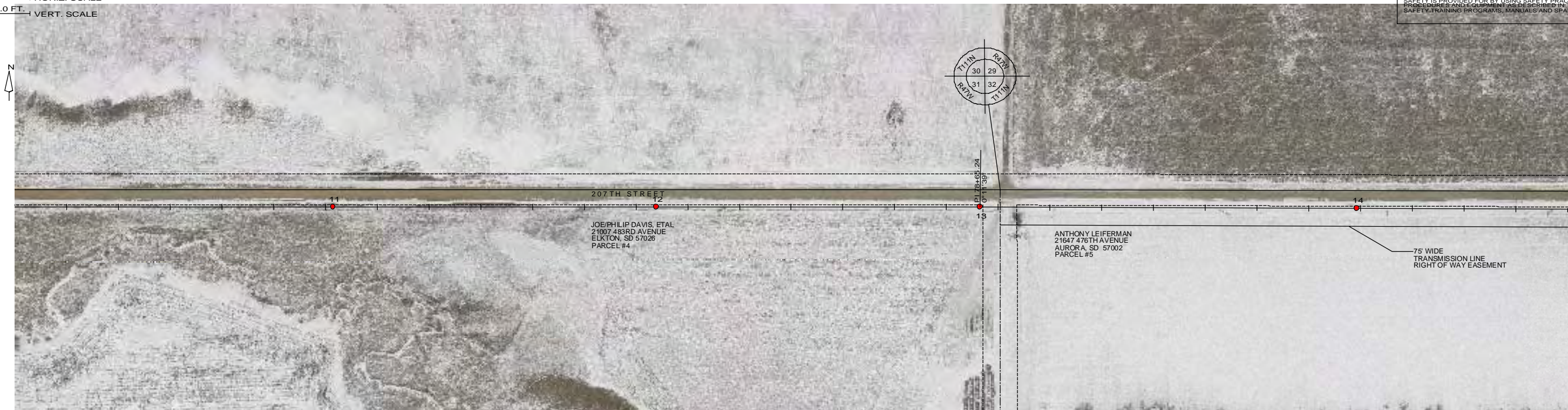


01/13/2009  
**PRELIMINARY**

ENGINEERING DEPARTMENT, MINNEAPOLIS, MN		LINE NO. 5547	NH-202027-04	REV
CONFIDENTIAL: DO NOT COPY OR DISTRIBUTE TO OTHERS WITHOUT EXPRESS WRITTEN CONSENT FROM XCEL ENERGY.				
L5547_V13 1/13/2009				

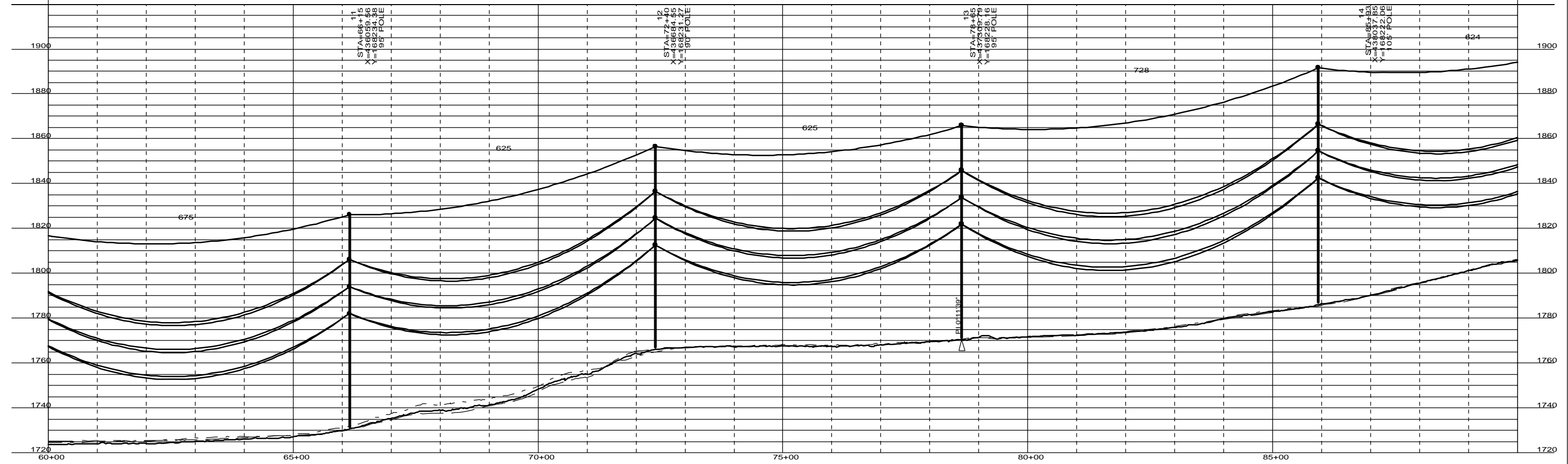
100.0 FT. HORIZ. SCALE  
20.0 FT. VERT. SCALE

THIS MAP/DOCUMENT IS A TOOL TO ASSIST EMPLOYEES IN THE PERFORMANCE OF THEIR JOB'S. YOUR PERSONAL SAFETY IS PROVIDED FOR BY USING SAFETY PRACTICES, PROCEDURES AND EQUIPMENT AS DESCRIBED IN THE SAFETY TRAINING PROGRAMS, MANUALS AND SPAR'S.



STR 05 TO STR 21  
 SHIELD: 1-3/8" EHS STEEL @ 4,000# D.T. @ HL  
 COND: 6-795 MCM ACSS 26/7 @ 8,100# D.T. @ HL, RS=673 FT  
 SW SAG TABLE NQ-XXXXXX-X, COND SAG TABLE NQ-XXXXXX-X  
 SW SHOWN @ -20 DEG INITIAL, COND SHOWN @ 392 DEG FINAL

NOTES:  
 1. DOUBLE CIRCUIT WITH EAST RIVER ELECTRIC BETWEEN STRS 06 - 21.  
 2. EAST RIVER ELECTRIC IS NORTHERN 115KV CIRCUIT.



01/13/2009  
**PRELIMINARY**

ENGINEERING DEPARTMENT, MINNEAPOLIS, MN		LINE NO. 5547	NH-202027-05	REV
CONFIDENTIAL: DO NOT COPY OR DISTRIBUTE TO OTHERS WITHOUT EXPRESS WRITTEN CONSENT FROM XCEL ENERGY.				
L5547_V13 1/13/2009				

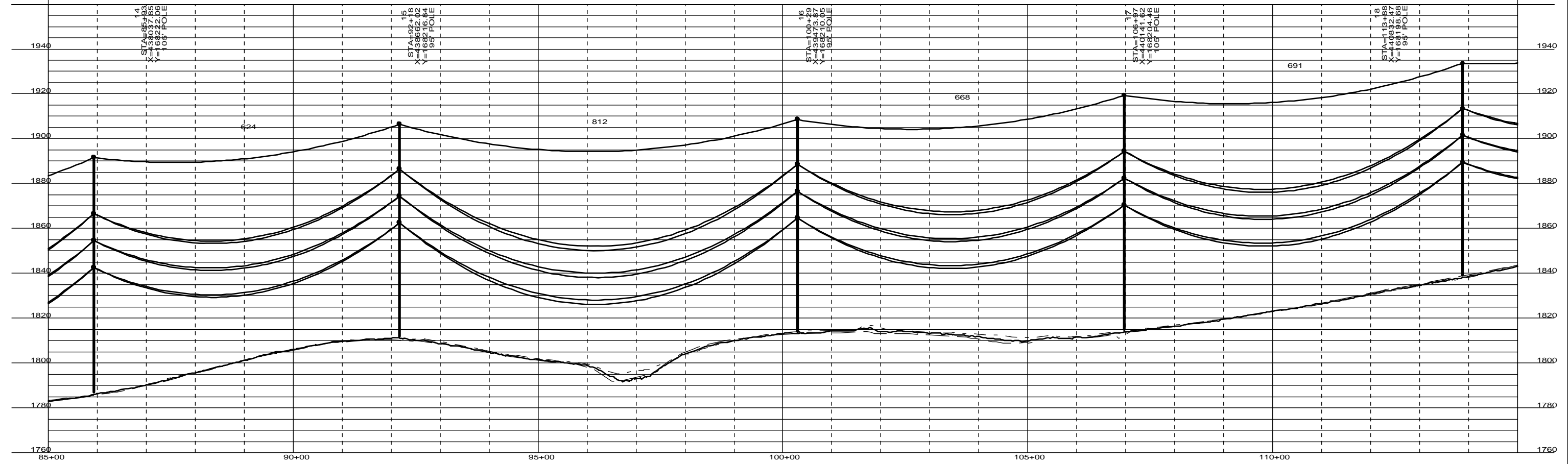
THIS MAP/DOCUMENT IS A TOOL TO ASSIST EMPLOYEES IN THE PERFORMANCE OF THEIR JOB'S. YOUR PERSONAL SAFETY IS PROVIDED FOR BY USING SAFETY PRACTICES, PROCEDURES AND EQUIPMENT AS DESCRIBED IN THE SAFETY TRAINING PROGRAMS, MANUALS AND SPAR'S.

100.0 FT. HORIZ. SCALE  
20.0 FT. VERT. SCALE



STR 05 TO STR 21  
SHIELD: 1-3/8" EHS STEEL @ 4,000# D.T. @ HL  
COND: 6-795 MCM ACSS 26/7 @ 8,100# D.T. @ HL, RS=673 FT  
SW SAG TABLE NQ-XXXXXX-X, COND SAG TABLE NQ-XXXXXX-X  
SW SHOWN @ -20 DEG INITIAL, COND SHOWN @ 392 DEG FINAL

NOTES:  
1. DOUBLE CIRCUIT WITH EAST RIVER ELECTRIC BETWEEN STRS 06 - 21.  
2. EAST RIVER ELECTRIC IS NORTHERN 115KV CIRCUIT.



01/13/2009  
**PRELIMINARY**

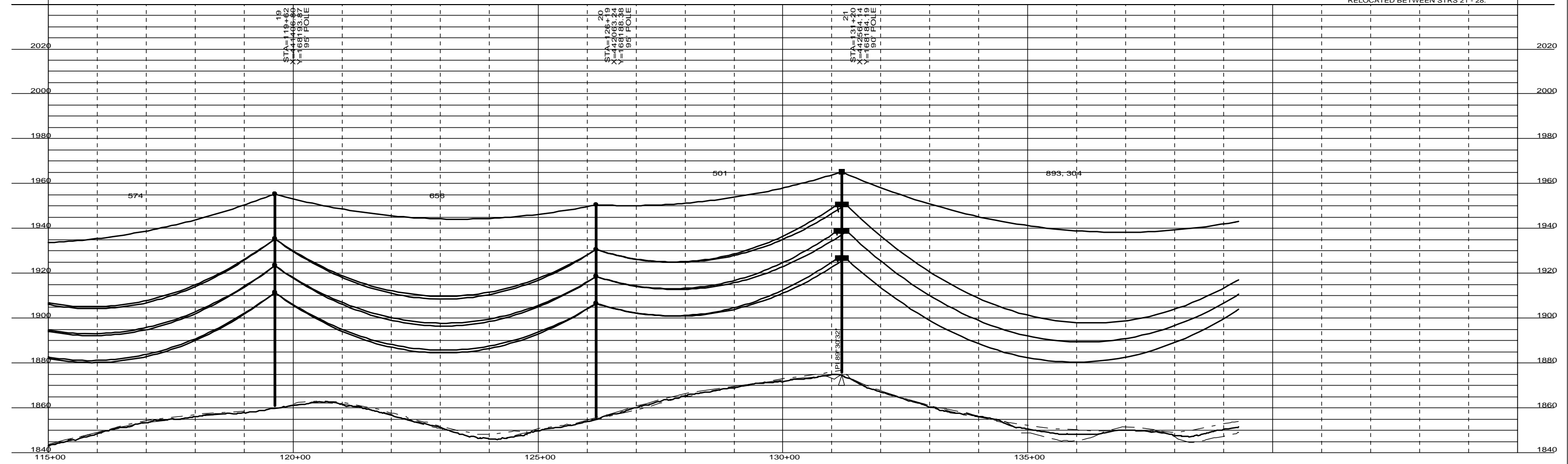
ENGINEERING DEPARTMENT, MINNEAPOLIS, MN		LINE NO. 5547	NH-202027-06	REV
CONFIDENTIAL: DO NOT COPY OR DISTRIBUTE TO OTHERS WITHOUT EXPRESS WRITTEN CONSENT FROM XCEL ENERGY.				
L5547_V13 1/13/2009				



STR 05 TO STR 21  
SHIELD: 1-3/8" EHS STEEL @ 4,000# D.T. @ HL  
COND: 6-795 MCM ACSS 26/7 @ 8,100# D.T. @ HL, RS=673 FT  
SW SAG TABLE NO-XXXXXX-X, COND SAG TABLE NO-XXXXXX-X  
SW SHOWN @ -20 DEG INITIAL, COND SHOWN @ 392 DEG FINAL

STR 21 TO STR 35  
SHIELD: 1-3/8" EHS STEEL @ 4,150# D.T. @ HL  
COND: 6-795 MCM ACSS 26/7 @ 8,400# D.T. @ HL, RS=752 FT  
SW SAG TABLE NO-XXXXXX-X, COND SAG TABLE NO-XXXXXX-X  
SW SHOWN @ -20 DEG INITIAL, COND SHOWN @ 392 DEG FINAL

- NOTES:
1. DOUBLE CIRCUIT WITH EAST RIVER ELECTRIC BETWEEN STRS 06 - 21.
  2. EAST RIVER ELECTRIC IS NORTHERN 115KV CIRCUIT.
  3. SINGLE PHASE DISTRIBUTION TO BE RELOCATED BETWEEN STRS 21 - 28.



01/13/2009  
**PRELIMINARY**

CONFIDENTIAL: DO NOT COPY OR DISTRIBUTE TO OTHERS WITHOUT EXPRESS WRITTEN CONSENT FROM XCEL ENERGY.

ENGINEERING DEPARTMENT, MINNEAPOLIS, MN

Xcel Energy

LINE NO. 5547

NH-202027-07

REV

L5547\_V13 1/13/2009

100.0 FT. HORIZ. SCALE  
20.0 FT. VERT. SCALE

THIS MAP/DOCUMENT IS A TOOL TO ASSIST EMPLOYEES IN THE PERFORMANCE OF THEIR JOB'S. YOUR PERSONAL SAFETY IS PROVIDED FOR BY USING SAFETY PRACTICES, PROCEDURES AND EQUIPMENT AS DESCRIBED IN THE SAFETY TRAINING PROGRAMS, MANUALS AND SPAR'S.



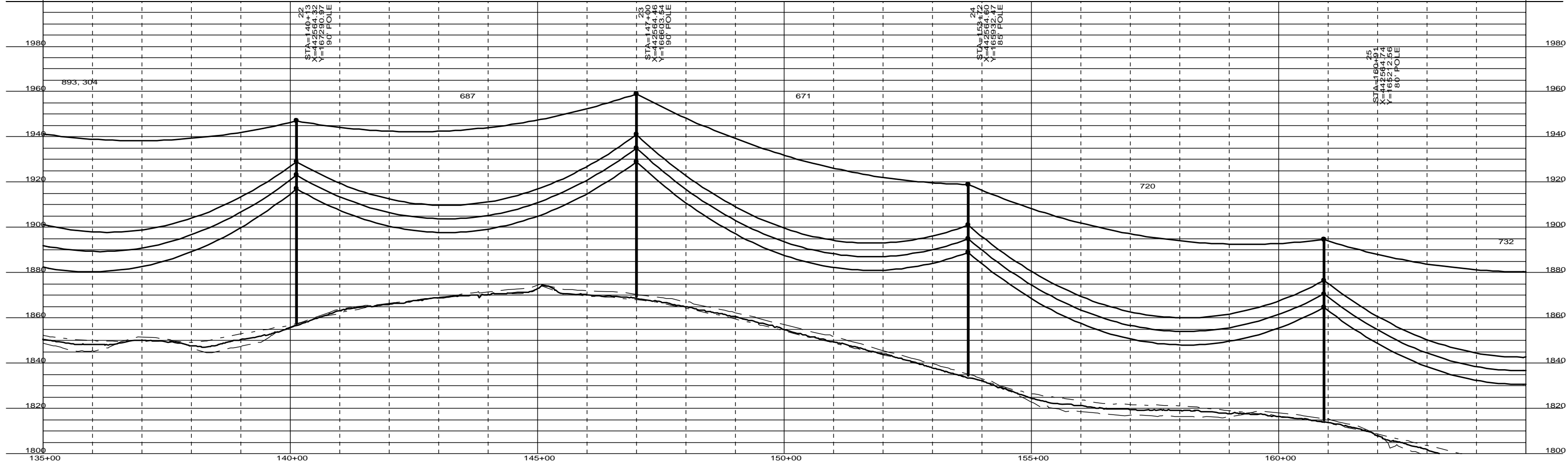
ANTHONY LEIFERMAN  
21647 476TH AVENUE  
AURORA, SD 57002  
PARCEL #5

ANTHONY LEIFERMAN  
21647 476TH AVENUE  
AURORA, SD 57002  
PARCEL #6

DANIEL LUZE  
21040 480TH AVENUE  
WHITE, SD 57276  
PARCEL #7

STR 21 TO STR 35  
SHIELD: 1-3/8" EHS STEEL @ 4.150# D.T. @ HL  
COND: 6-795 MCM ACSS 26/7 @ 8,400# D.T. @ HL, RS=752 FT  
SW SAG TABLE NQ-XXXXXX-X, COND SAG TABLE NQ-XXXXXX-X  
SW SHOWN @ -20 DEG INITIAL, COND SHOWN @ 392 DEG FINAL

NOTES:  
1. SINGLE PHASE DISTRIBUTION TO BE RELOCATED BETWEEN STRS 21 - 28.



01/13/2009

PRELIMINARY

CONFIDENTIAL: DO NOT COPY OR DISTRIBUTE TO OTHERS WITHOUT EXPRESS WRITTEN CONSENT FROM XCEL ENERGY.

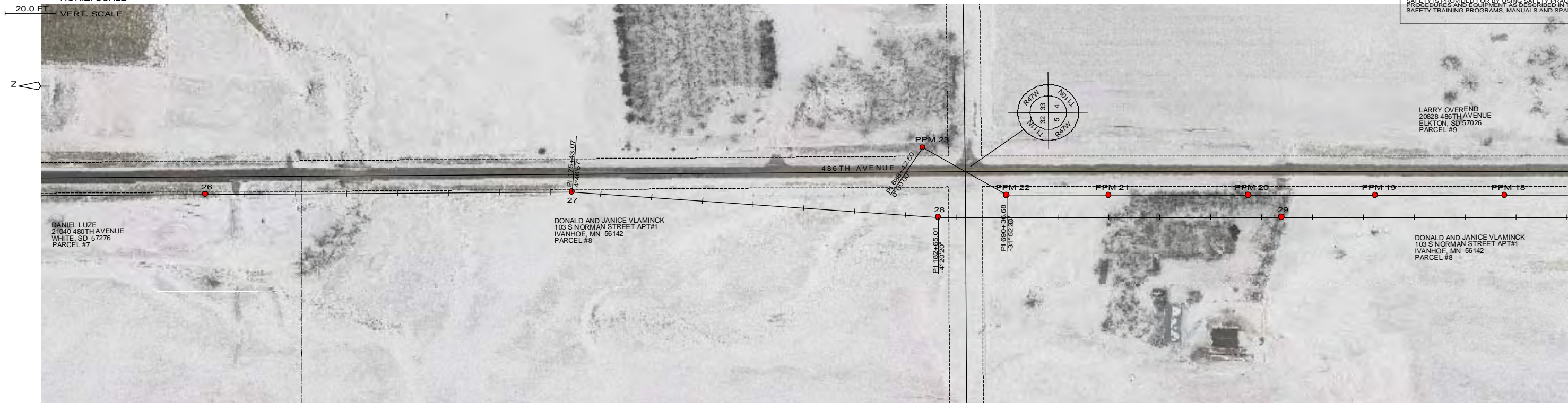
ENGINEERING DEPARTMENT, MINNEAPOLIS, MN	LINE NO. 5547	NH-202027-08	REV

L5547\_V13 1/13/2009

EXHIBIT 1

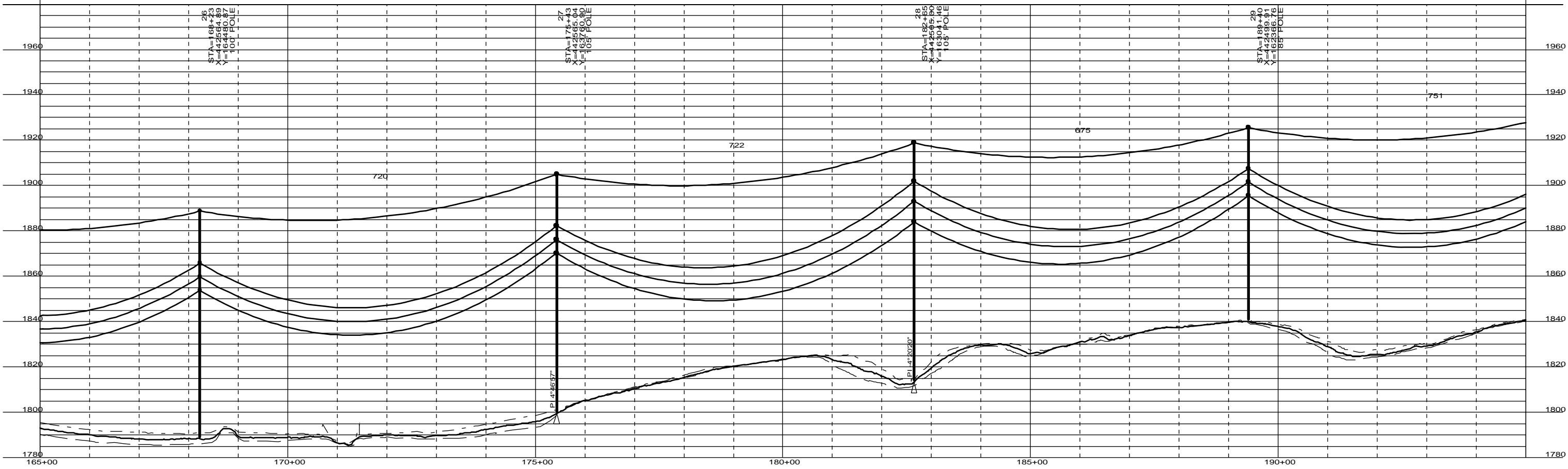
100.0 FT. HORIZ. SCALE  
20.0 FT. VERT. SCALE

THIS MAP/DOCUMENT IS A TOOL TO ASSIST EMPLOYEES IN THE PERFORMANCE OF THEIR JOB'S. YOUR PERSONAL SAFETY IS PROVIDED FOR BY USING SAFETY PRACTICES, PROCEDURES AND EQUIPMENT AS DESCRIBED IN THE SAFETY TRAINING PROGRAMS, MANUALS AND SPAR'S.



STR 21 TO STR 35  
SHIELD: 1-3/8" EHS STEEL @ 4.150# D.T. @ HL  
COND: 6-795 MCM ACSS 26/7 @ 8,400# D.T. @ HL, RS=752 FT  
SW SAG TABLE NQ-XXXXXX-X, COND SAG TABLE NQ-XXXXXX-X  
SW SHOWN @ -20 DEG INITIAL, COND SHOWN @ 392 DEG FINAL

NOTES:  
1. SINGLE PHASE DISTRIBUTION TO BE RELOCATED BETWEEN STRS 21 - 28.



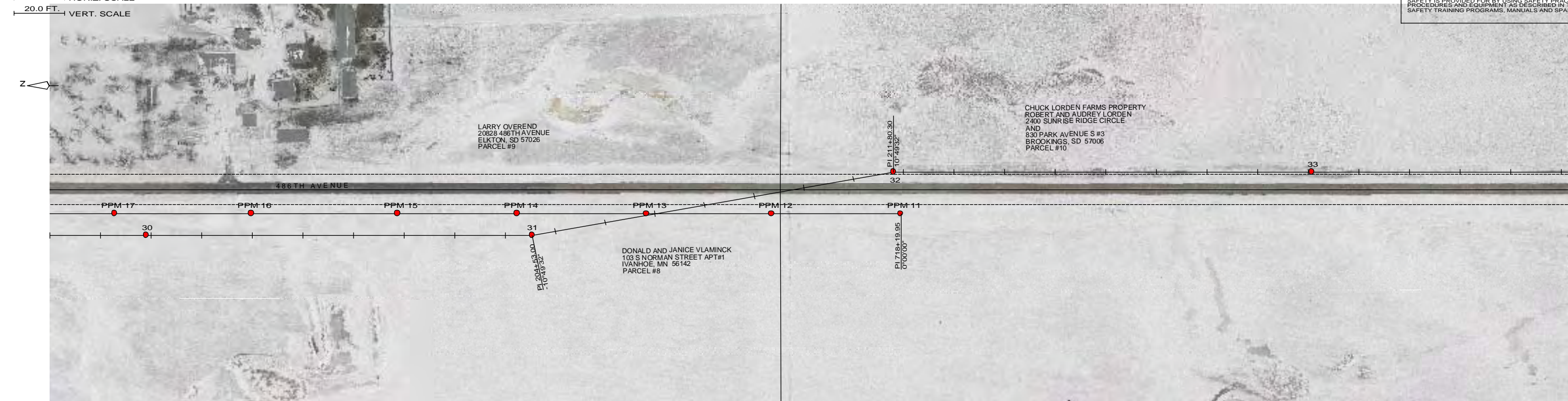
01/13/2009  
PRELIMINARY

ENGINEERING DEPARTMENT, MINNEAPOLIS, MN		LINE NO. 5547	NH-202027-09	REV
CONFIDENTIAL: DO NOT COPY OR DISTRIBUTE TO OTHERS WITHOUT EXPRESS WRITTEN CONSENT FROM XCEL ENERGY.				
Xcel Energy				
L5547_V13 1/13/2009				

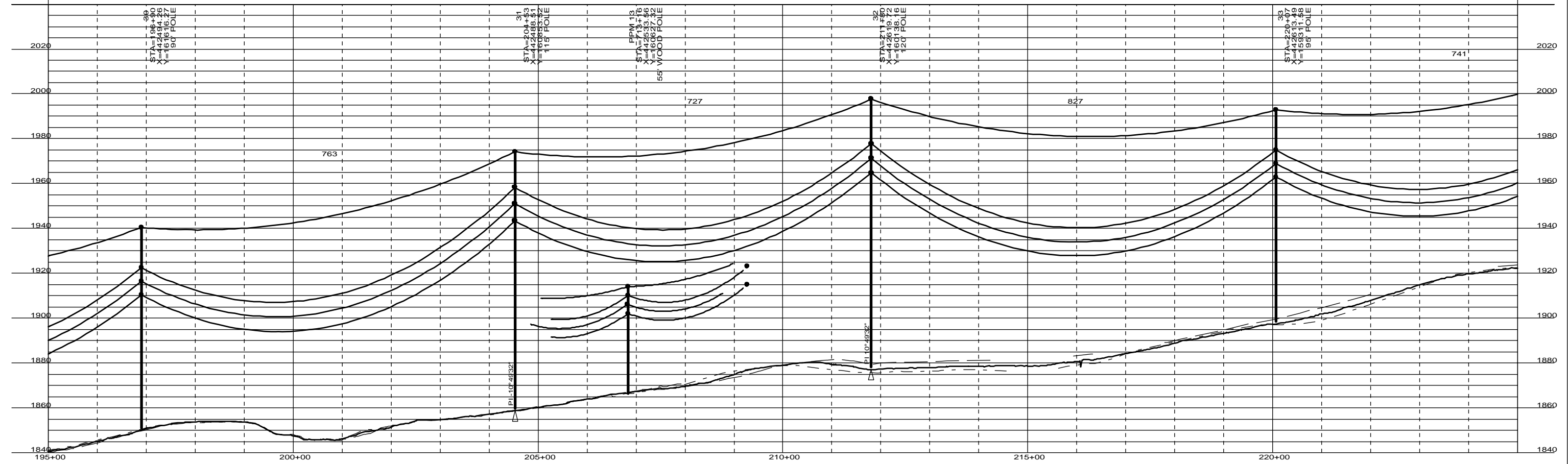


100.0 FT. HORIZ. SCALE  
20.0 FT. VERT. SCALE

THIS MAP/DOCUMENT IS A TOOL TO ASSIST EMPLOYEES IN THE PERFORMANCE OF THEIR JOB'S. YOUR PERSONAL SAFETY IS PROVIDED FOR BY USING SAFETY PRACTICES, PROCEDURES AND EQUIPMENT AS DESCRIBED IN THE SAFETY TRAINING PROGRAMS, MANUALS AND SPAR'S.



STR 21 TO STR 35  
 SHIELD: 1-3/8" EHS STEEL @ 4.150# D.T. @ HL  
 COND: 6-795 MCM ACSS 26/7 @ 8,400# D.T. @ HL, RS=752 FT  
 SW SAG TABLE NQ-XXXXXX-X, COND SAG TABLE NQ-XXXXXX-X  
 SW SHOWN @ -20 DEG INITIAL, COND SHOWN @ 392 DEG FINAL



01/13/2009  
PRELIMINARY

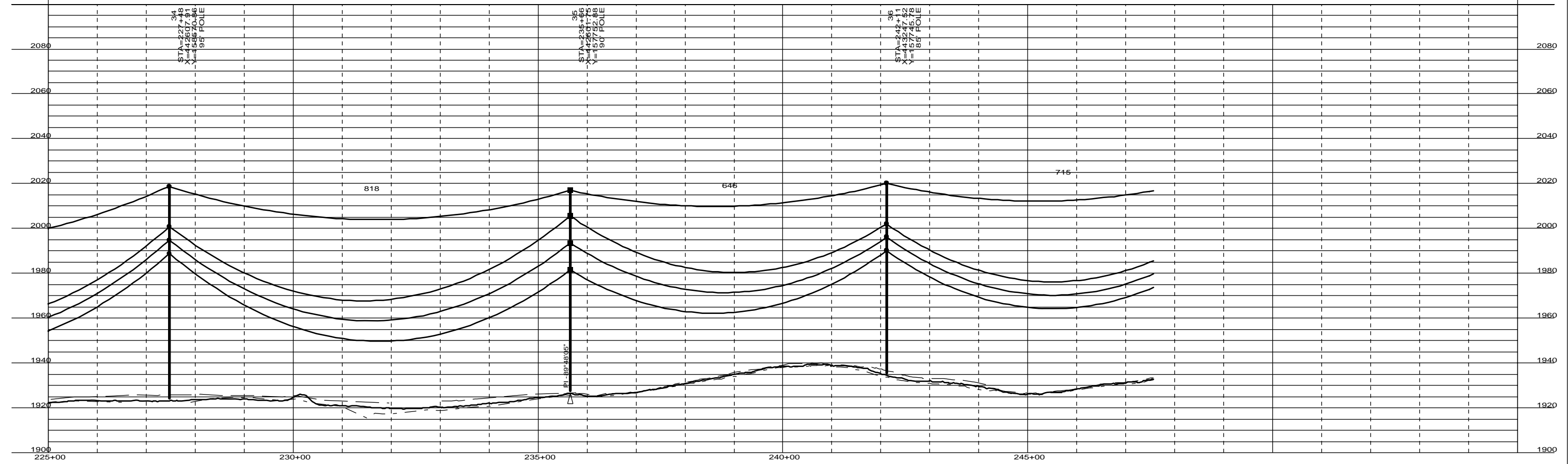
ENGINEERING DEPARTMENT, MINNEAPOLIS, MN		LINE NO. 5547	NH-202027-10	REV
CONFIDENTIAL: DO NOT COPY OR DISTRIBUTE TO OTHERS WITHOUT EXPRESS WRITTEN CONSENT FROM XCEL ENERGY.				
L5547_V13 1/13/2009				



THIS MAP/DOCUMENT IS A TOOL TO ASSIST EMPLOYEES IN THE PERFORMANCE OF THEIR JOB'S. YOUR PERSONAL SAFETY IS PROVIDED FOR BY USING SAFETY PRACTICES, PROCEDURES AND EQUIPMENT AS DESCRIBED IN THE SAFETY TRAINING PROGRAMS, MANUALS AND SPAR'S.

STR 21 TO STR 35  
SHIELD: 1-3/8" EHS STEEL @ 4,150# D.T. @ HL  
COND: 6-795 MCM ACSS 26/7 @ 8,400# D.T. @ HL, RS=752 FT  
SW SAG TABLE NO-XXXXXX-X, COND SAG TABLE NO-XXXXXX-X  
SW SHOWN @ -20 DEG INITIAL, COND SHOWN @ 392 DEG FINAL

STR 35 TO STR 48  
SHIELD: 1-3/8" EHS STEEL @ 4,000# D.T. @ HL  
COND: 6-795 MCM ACSS 26/7 @ 8,150# D.T. @ HL, RS=684 FT  
SW SAG TABLE NO-XXXXXX-X, COND SAG TABLE NO-XXXXXX-X  
SW SHOWN @ -20 DEG INITIAL, COND SHOWN @ 392 DEG FINAL



01/13/2009  
**PRELIMINARY**

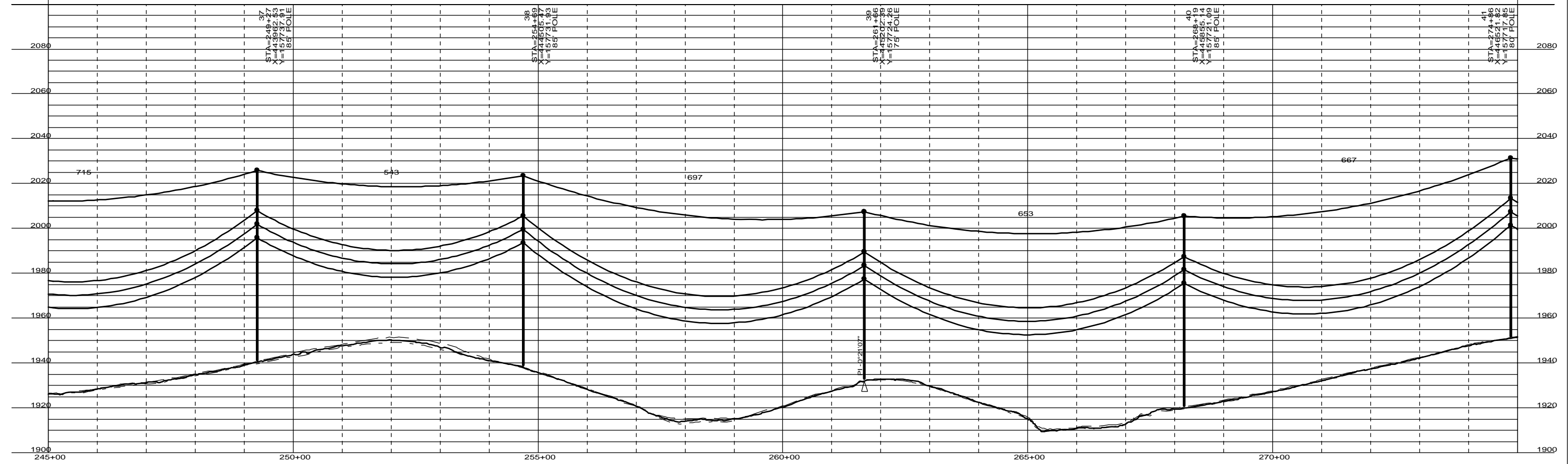
ENGINEERING DEPARTMENT, MINNEAPOLIS, MN		LINE NO. 5547	NH-202027-11	REV
CONFIDENTIAL: DO NOT COPY OR DISTRIBUTE TO OTHERS WITHOUT EXPRESS WRITTEN CONSENT FROM XCEL ENERGY.				

100.0 FT. HORIZ. SCALE  
20.0 FT. VERT. SCALE

THIS MAP DOCUMENT IS A TOOL TO ASSIST EMPLOYEES IN THE PERFORMANCE OF THEIR JOB'S. YOUR PERSONAL SAFETY IS PROVIDED FOR BY USING SAFETY PRACTICES, PROCEDURES AND EQUIPMENT AS DESCRIBED IN THE SAFETY TRAINING PROGRAMS, MANUALS AND SPAR'S.



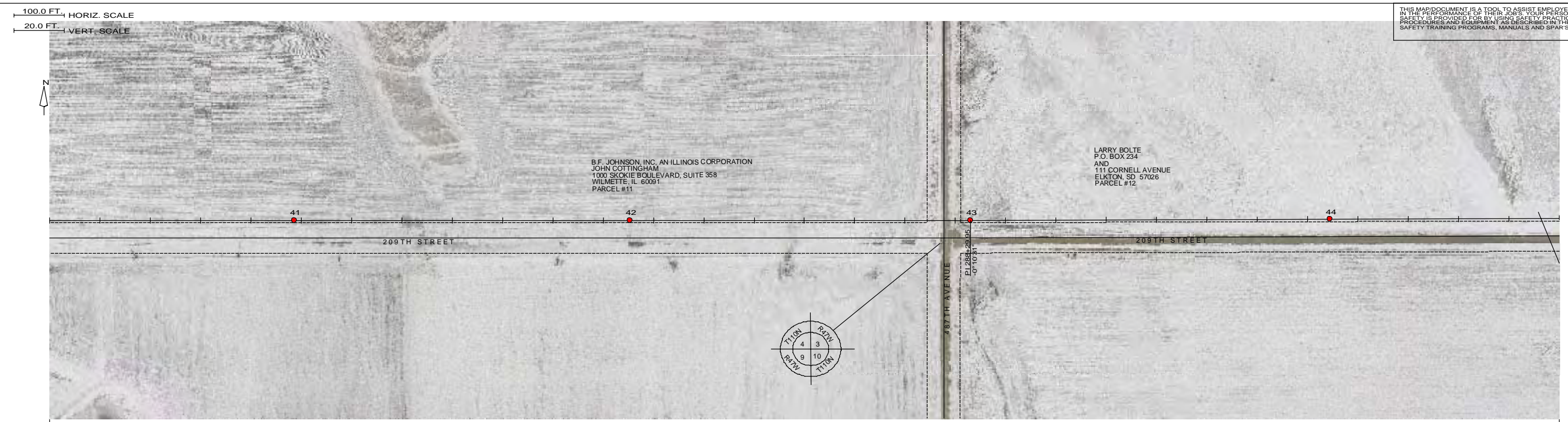
STR 35 TO STR 48  
SHIELD: 1-3/8" EHS STEEL @ 4.000# D.T. @ HL  
COND: 6-795 MCM ACSS 26/7 @ 8,150# D.T. @ HL, RS=684 FT  
SW SAG TABLE NQ-XXXXXX-X, COND SAG TABLE NQ-XXXXXX-X  
SW SHOWN @ -20 DEG INITIAL, COND SHOWN @ 392 DEG FINAL



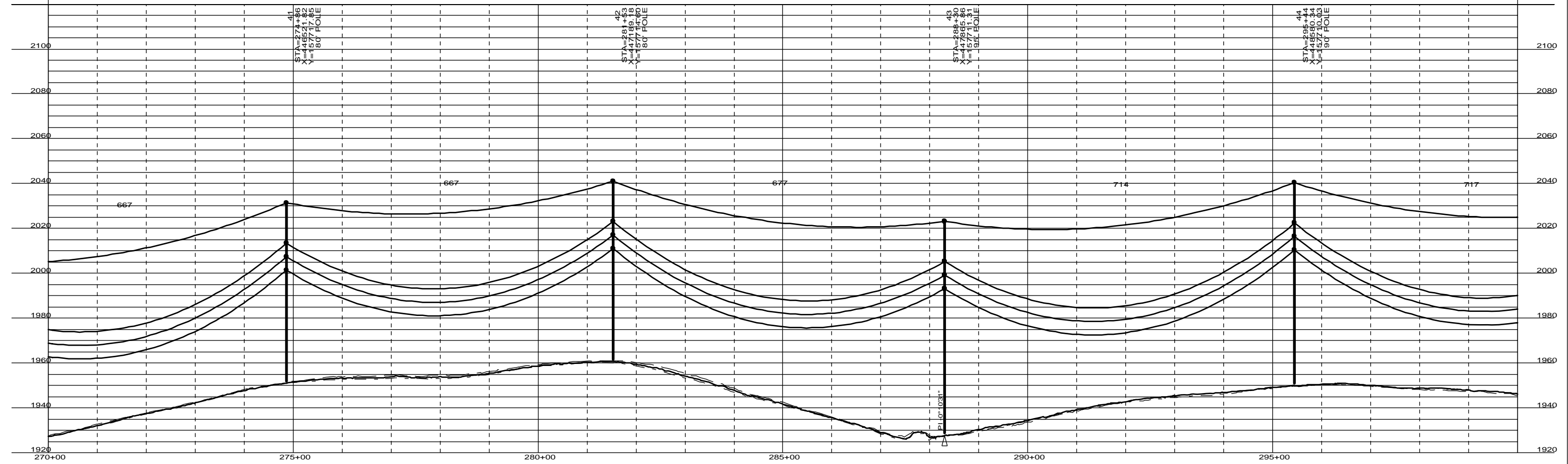
01/13/2009  
PRELIMINARY

ENGINEERING DEPARTMENT, MINNEAPOLIS, MN		LINE NO. 5547	NH-202027-12	REV
CONFIDENTIAL: DO NOT COPY OR DISTRIBUTE TO OTHERS WITHOUT EXPRESS WRITTEN CONSENT FROM XCEL ENERGY.				
L5547_V13 1/13/2009				

THIS MAP/DOCUMENT IS A TOOL TO ASSIST EMPLOYEES IN THE PERFORMANCE OF THEIR JOB'S. YOUR PERSONAL SAFETY IS PROVIDED FOR BY USING SAFETY PRACTICES, PROCEDURES AND EQUIPMENT AS DESCRIBED IN THE SAFETY TRAINING PROGRAMS, MANUALS AND SPAR'S.



STR 35 TO STR 48  
SHIELD: 1-3/8" EHS STEEL @ 4.000# D.T. @ HL  
COND: 6-795 MCM ACSS 26/7 @ 8,150# D.T. @ HL, RS=684 FT  
SW SAG TABLE NQ-XXXXXX-X, COND SAG TABLE NQ-XXXXXX-X  
SW SHOWN @ -20 DEG INITIAL, COND SHOWN @ 392 DEG FINAL



01/13/2009  
**PRELIMINARY**

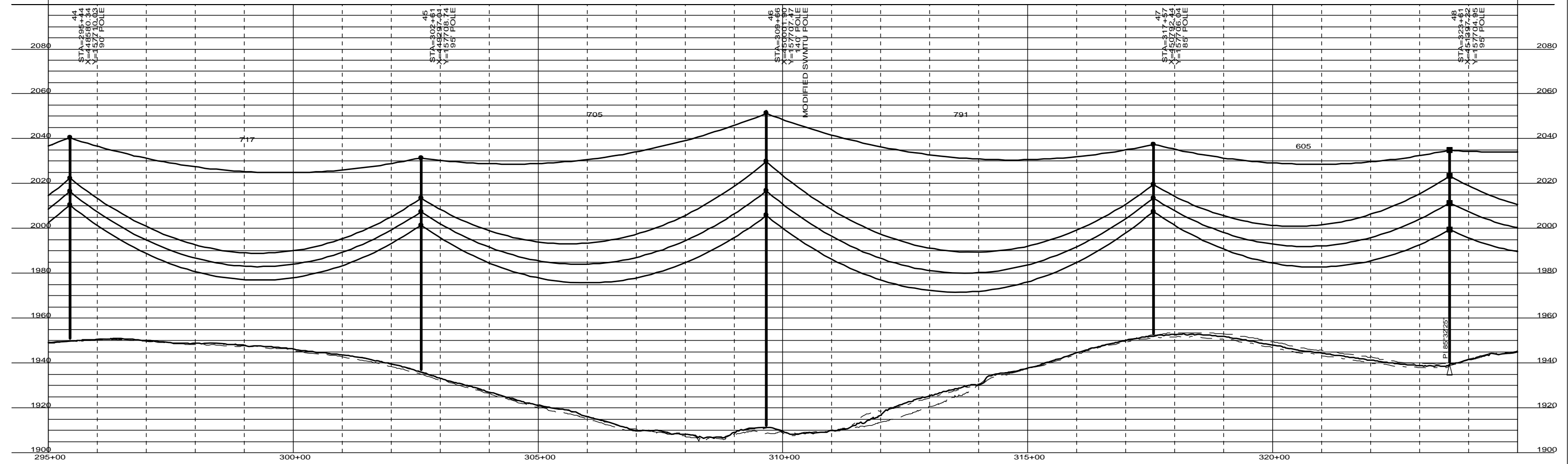
ENGINEERING DEPARTMENT, MINNEAPOLIS, MN		LINE NO. 5547	NH-202027-13	REV
CONFIDENTIAL: DO NOT COPY OR DISTRIBUTE TO OTHERS WITHOUT EXPRESS WRITTEN CONSENT FROM XCEL ENERGY.		Xcel Energy	L5547_V13	1/13/2009



THIS MAP/DOCUMENT IS A TOOL TO ASSIST EMPLOYEES IN THE PERFORMANCE OF THEIR JOBS. YOUR PERSONAL SAFETY IS PROVIDED FOR BY USING SAFETY PRACTICES, PROCEDURES AND EQUIPMENT AS DESCRIBED IN THE SAFETY TRAINING PROGRAMS, MANUALS AND SPAR'S.

STR 35 TO STR 48  
 SHIELD: 1-3/8" EHS STEEL @ 4,000# D.T. @ HL  
 COND: 6-795 MCM ACSS 26/7 @ 8,150# D.T. @ HL, RS=684 FT  
 SW SAG TABLE NO-XXXXXX-X, COND SAG TABLE NO-XXXXXX-X  
 SW SHOWN @ -20 DEG INITIAL, COND SHOWN @ 392 DEG FINAL

STR 48 TO STR 51  
 SHIELD: 1-3/8" EHS STEEL @ 3,750# D.T. @ HL  
 COND: 6-795 MCM ACSS 26/7 @ 7,850# D.T. @ HL, RS=612 FT  
 SW SAG TABLE NO-XXXXXX-X, COND SAG TABLE NO-XXXXXX-X  
 SW SHOWN @ -20 DEG INITIAL, COND SHOWN @ 392 DEG FINAL



01/13/2009  
**PRELIMINARY**

CONFIDENTIAL: DO NOT COPY OR DISTRIBUTE TO OTHERS WITHOUT EXPRESS WRITTEN CONSENT FROM XCEL ENERGY.	ENGINEERING DEPARTMENT, MINNEAPOLIS, MN 	LINE NO. 5547	NH-202027-14	REV
---	---	---------------	--------------	-----