

Exhibit 1.1:

Existing Territorial Boundary between West River Electric Association and Black Hills Power

Beginning at the half section line of Section 30 and 29, Township 2 North, Range 8 East, Black Hills Meridian, Pennington County, South Dakota and extending east one mile to the section line of 28 and 29 located in Township 2 North, Range 8 East, Black Hills Meridian, Pennington County, South Dakota.

SECTION 29 T2N, R8E TERRITORY TRADE BLACK HILL POWER - WEST RIVER ELECTRIC EXHIBIT 1.2

T2N
29
R8E

EXISTING
TERRITORY
BOUNDARY

WEST RIVER ELECTRIC
BLACK HILLS POWER

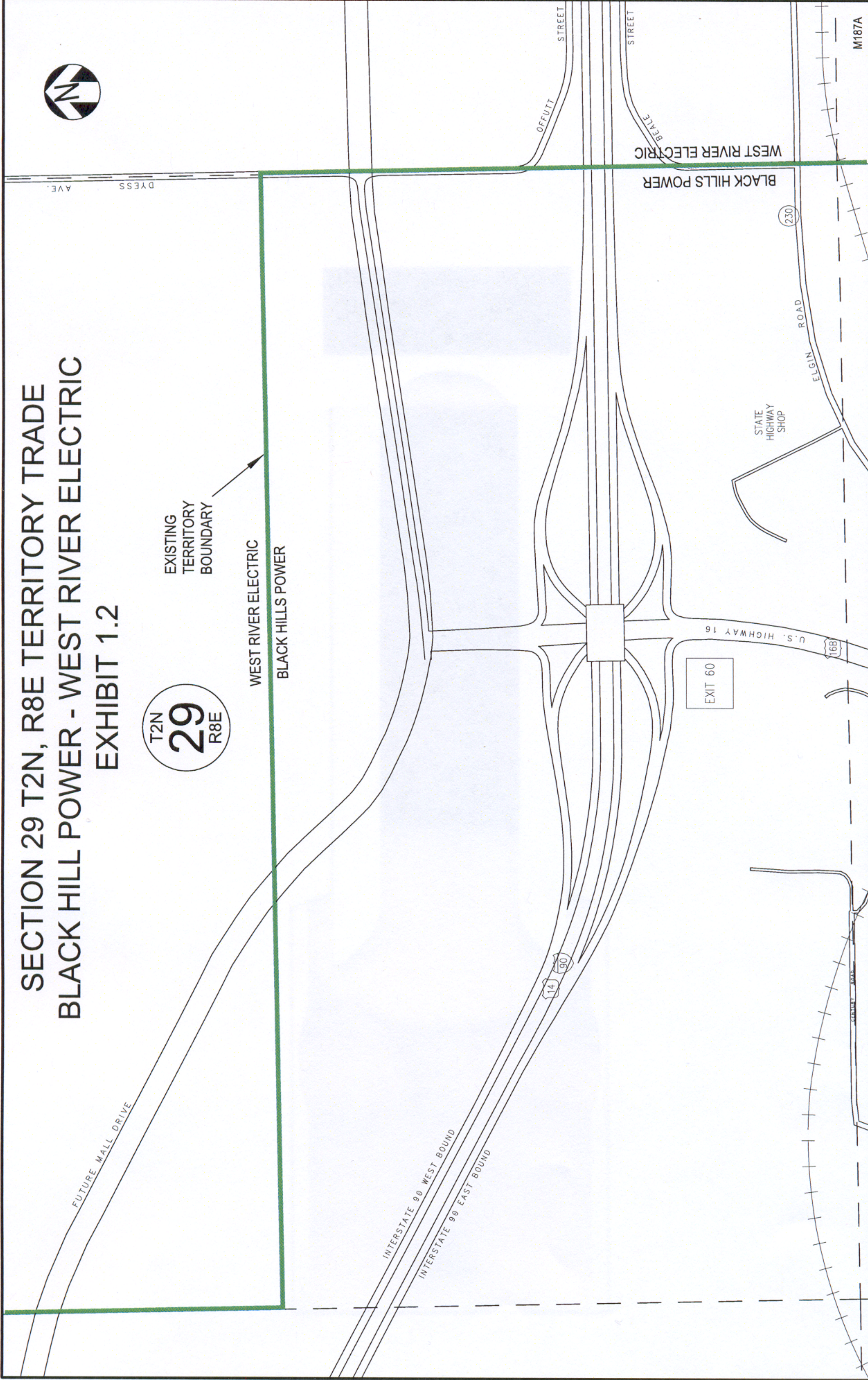


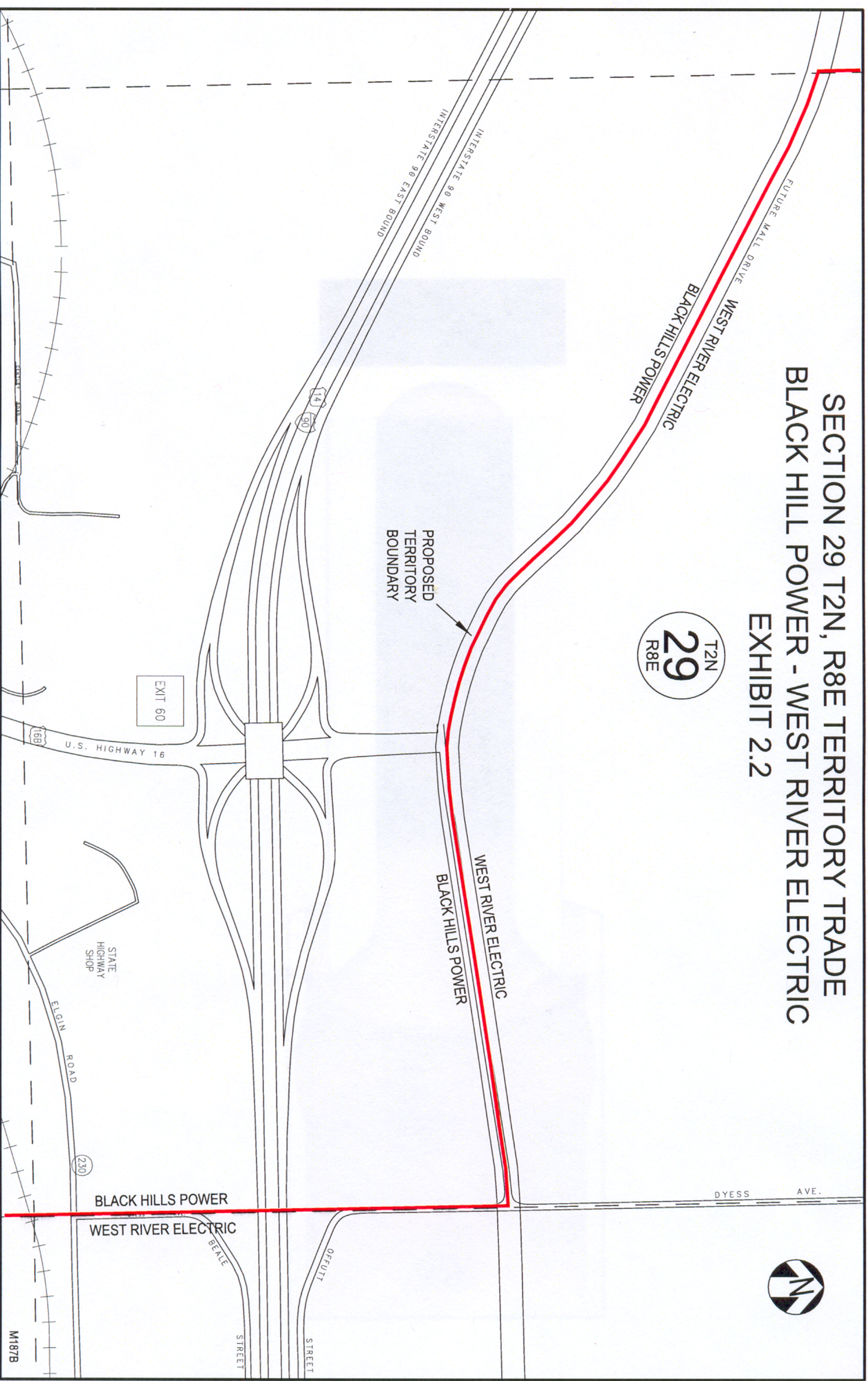
Exhibit 2.1:

Proposed Territorial Boundary between West River Electric Association and Black Hills Power

Beginning at the west, north south section line of Section 29, Township 2 North, Range 8 East, Black Hills Meridian, Pennington County, South Dakota where said section line intersects the mid point boundary of the future Mall Drive, and extending east along mid point of Mall Drive until reaching the East, north south section line of 29 and west, north south line of section 28 located in Township 2 North, Range 8 East, Black Hills Meridian, Pennington County, South Dakota.

SECTION 29 T2N, R8E TERRITORY TRADE
BLACK HILL POWER - WEST RIVER ELECTRIC
EXHIBIT 2.2

T2N
29
R8E



F M L C, Inc.

A South Dakota Subchapter (S) Corporation

Robert Usera
c/o Black Hills Power, Inc.
P O Box 1400
Rapid City, SD
57709

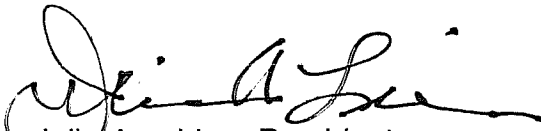
Dave Semerad
c/o West River Electric Assn.
3250 E Hwy 44
Rapid City, SD
57703

RE: Request for approval of ~joint electric service territory agreement submitted March, 2007

Gentlemen,

FMLC, Inc., by resolution of it's Board of Directors, hereby gives consent for territory boundary changes as proposed in joint agreement with Black Hills Power, Inc. and West River Electric Association as shown in the attached exhibit and referenced to be located in:

Section 29, T2N, R8E of the Black Hills Meridian, Pennington County, SD



Julie Ann Lien, President
FMLC, Inc.
3213 West Main Street #444
Rapid City, SD
57702

Date: April 11, 2007

SECTION 29 T2N, R8E TERRITORY TRADE BLACK HILL POWER - WEST RIVER ELECTRIC

T2N
29
R8E



DYESS AVE.

EXISTING
TERRITORY
BOUNDARY

WEST RIVER ELECTRIC
BLACK HILLS POWER

PROPOSED
TERRITORY
BOUNDARY

WEST RIVER ELECTRIC
BLACK HILLS POWER

FUTURE MALL DRIVE
WEST RIVER ELECTRIC
BLACK HILLS POWER

INTERSTATE 90 WEST BOUND
INTERSTATE 90 EAST BOUND



EXIT 60

U.S. HIGHWAY 16

STATE
HIGHWAY
SHOP

ELGIN ROAD

230

BLACK HILLS POWER
WEST RIVER ELECTRIC

OFFUTT STREET

STREET

BEALE

M187