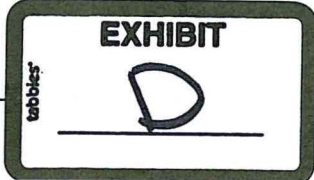




<ul style="list-style-type: none"> <li> Milepost</li> <li> Reroute Milepost</li> <li> Launcher/Receiver</li> <li> Mainline Valve</li> <li> Proposed Route</li> </ul>	<ul style="list-style-type: none"> <li> Previous Route</li> <li> Work Space</li> <li> Spink Pump Station</li> <li> Topeka Shiner Stream</li> <li> PAB Wetland</li> </ul>	<ul style="list-style-type: none"> <li> PEM Wetland</li> <li> PSS Wetland</li> <li> NWD Waterbody</li> <li> NWI Wetlands</li> </ul>	<ul style="list-style-type: none"> <li> 334 Connector</li> <li> 460 Stream</li> <li> 558 Artificial Path</li> </ul>	<ul style="list-style-type: none"> <li> 390 Lake/Pond</li> <li> 466 Swampmarsh</li> </ul>
--	--	---	---	---

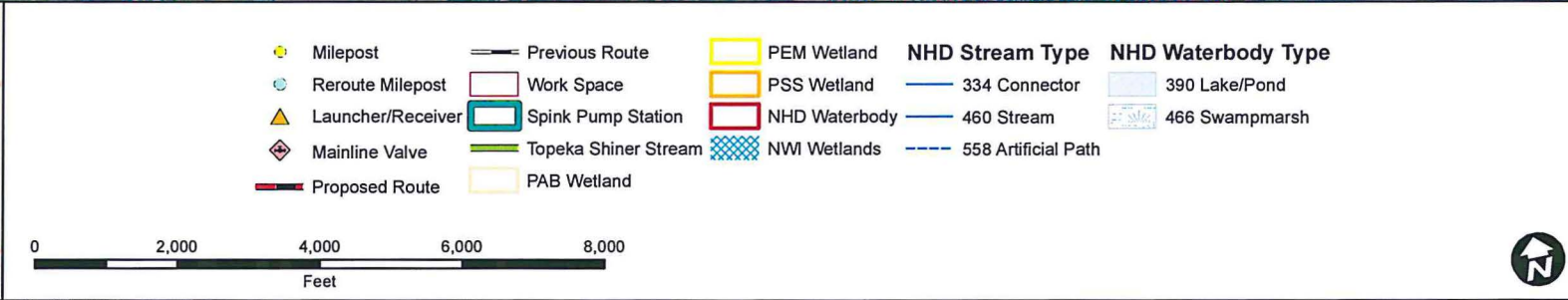
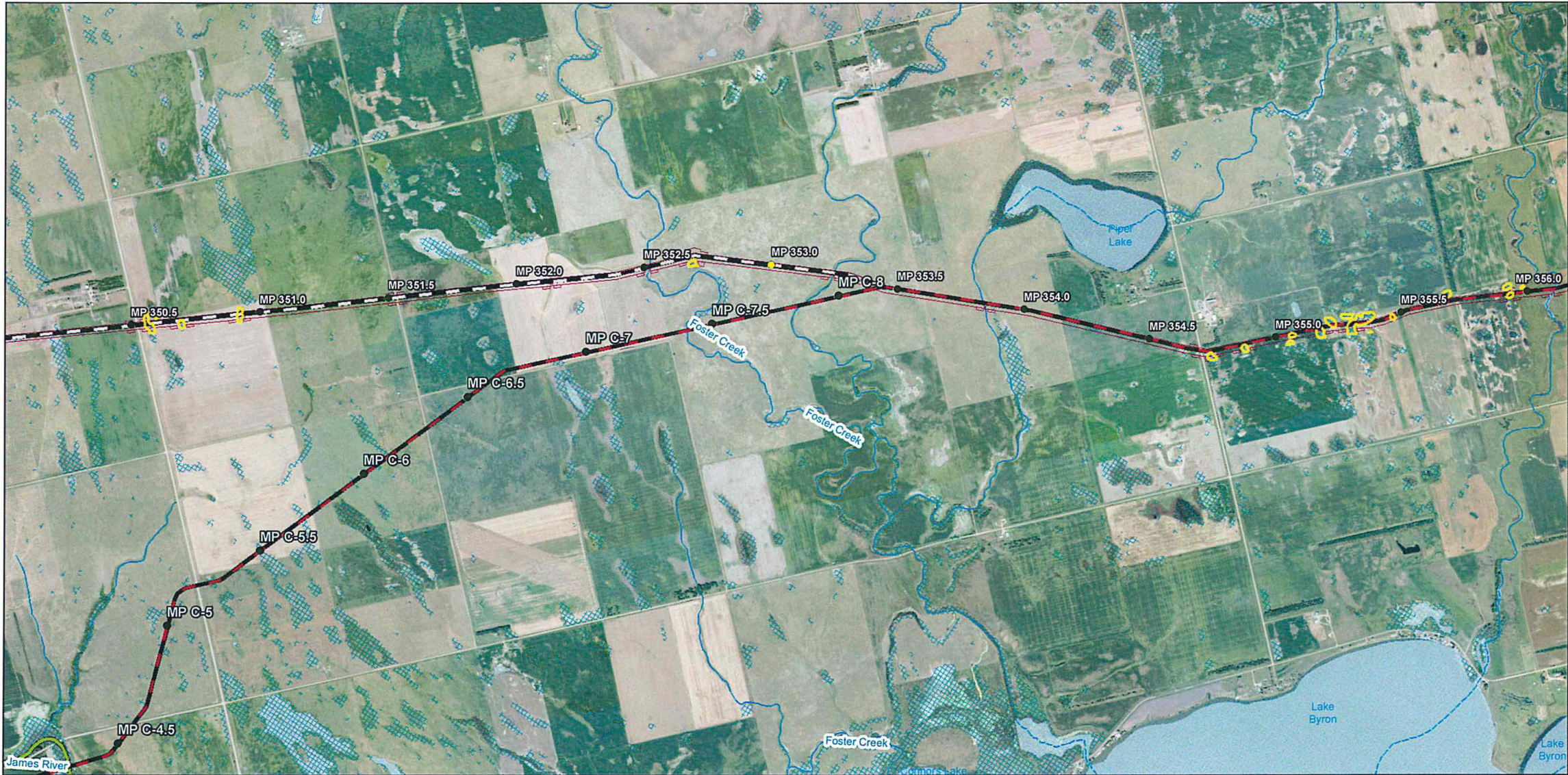
0 2,000 4,000 6,000 8,000 Feet




**Dakota Access, LLC**  
 Dakota Access Pipeline Project  
 James River Reroute  
 Hydrology  
 Surface Water Map  
 South Dakota

Path: P:\GIS\Client\ETC\_Energy Transfer\Dakota Access\_DAPL\Maps\ENV\PU\JamesRiver1158\_Hydro.mxd





 DAKOTA ACCESS, LLC

**Dakota Access, LLC**  
 Dakota Access Pipeline Project  
 James River Reroute  
 Hydrology  
 Surface Water Map  
 South Dakota

Page 2 of 2	Scale: 1:24,000
NAD 83 South Dakota South Ft	Date: Mar 17, 2015