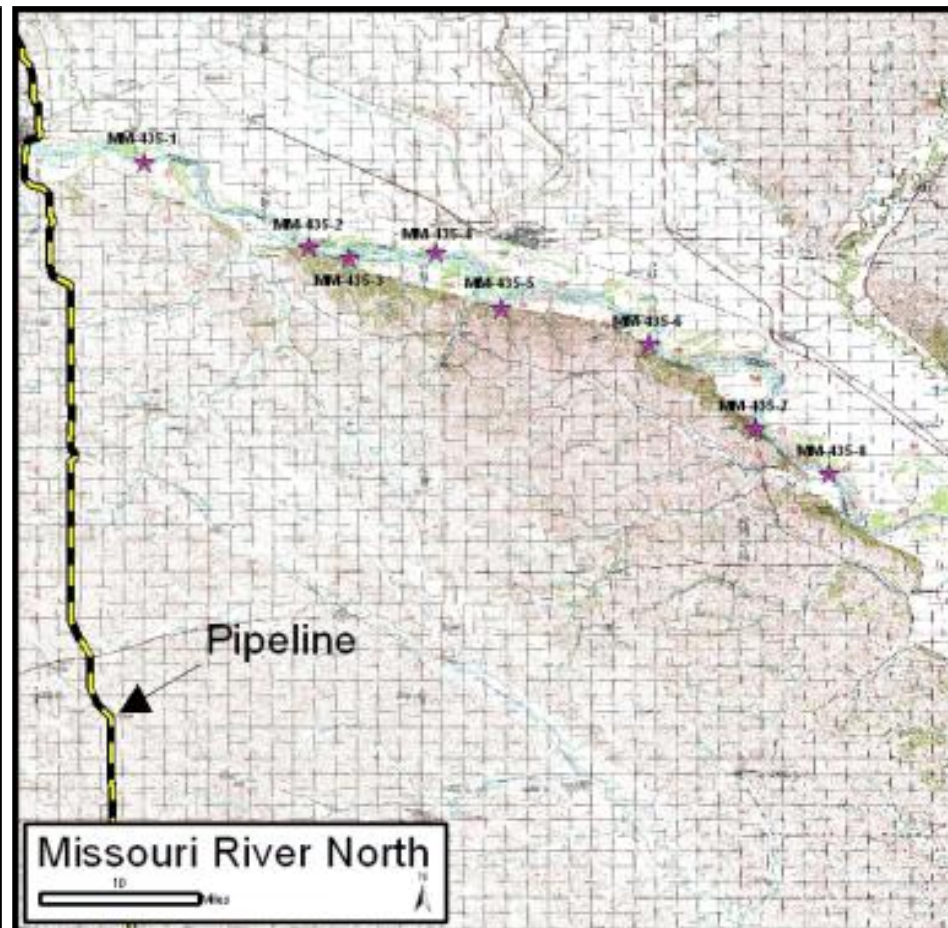


RESPONSE STRATEGY



Nearest Response Equipment:

To Be Determined.

Access to Area:

Take Hwy. 81 South from Yankton, South Dakota, turn left on Hwy. 50, turn right on 454th St. to the Myron Grove boat ramp.

Location of Staging Area / Boat Launch:

Establish Staging Area as needed, large area available.

Boat ramp available.

Description of Watercourse:

Large meandering river with high silt content and at least 6 distinct habitats. General river flow is Southeast. At this location the river ranges from approximately 800-2000 ft. wide, with a depth ranging from 10-45 ft., and a current of 3-10 knots depending on flow.

Bank Characteristics:

North and South bank are generally gently sloping with low vegetation and trees, areas of riprap.

Areas along the southern bank have eroding river banks with occasional bluffs (e.g. due South of the boat ramp). Numerous sand bars and islands can be found on the river. CP2 is located West of the Goat Island.

Environmental Sensitivities:

Critical distance to population center.

Critical distance to Intakes and Environmental Sensitive Areas.

Decontamination Areas:

Establish Small 10' X 10' Personnel DECON next to Staging Area per Spill Management Guide.

Comments:

16.5 miles downstream from pipeline.

Note: This Tactical Control Plan is provided as a general guidance tool for response to an incident emanating from this location. The selection of response strategy equipment, manpower and deployment site may vary based on actual field conditions (e.g. terrain, weather conditions, product type/volume) and incident details.

INFORMATION

Location/Site: MM-435-2 Missouri River (North)
Nearest City: Wynot, Nebraska

Latitude/Longitude:
42° 46' 19" N, 97° 7' 17" W

Landowner: Clay County
Vermillion, SD

Upstream CP: CP1

Phone: 605-677-7185

Downstream CP: CP3

EQUIPMENT AND PERSONNEL

Equipment/Personnel	Quantity
Personnel	20
18" Containment Boom	8,000'
Response Trailer	2
Skimming System - Drum	2
Skimming System - Boat	1
Vacuum Truck	2
Response Boat	5
Roll-Off Boxes	2
Frak Tank	1

RESPONSE OBJECTIVES

Establish perimeter to control access.

Establish Staging Area and Personnel DECON.

Deploy containment/deflection boom to prevent oil from progressing further.

Deploy waterborne Skimmer assets for J, V, U shape collection of free floating oil.

SAFETY

Develop a Site Safety Plan, brief all response personnel accordingly before and after the shifts.

Require the wearing of Personal Floatation Device (PFD) within 6' of the water's edge.

When Air and Water temperatures collectively are equal or less than 100 degrees Fahrenheit, Cold Weather Gear shall be worn.

RESPONSE STRATEGY

Nearest Response Equipment:

To Be Determined.

Access to Area:

Take Hwy. 81 South from Yankton, SD, turn left on Hwy. 50, turn right on 460th Ave. and continue to the Clay County Park.

Location of Staging Area / Boat Launch:

Establish Staging Area as needed, large area available.

Boat ramp available.

Description of Watercourse:

Large meandering river with a high silt content and at least 6 distinct habitats. Flow is Southeast, estimated 500-1500 ft. wide, with a depth ranging from 10-45 ft. and a current of 3-10 knots.

Bank Characteristics:

North and South bank are general gently sloping with low vegetation and trees, areas of riprap.

Depending on the current, there may be eroding river banks with occasional bluffs. Numerous sand bars and islands can be found along the river.

Environmental Sensitivities:

Critical distance to population center. Critical distance to Intakes and Environmental Sensitive Areas.

Decontamination Areas:

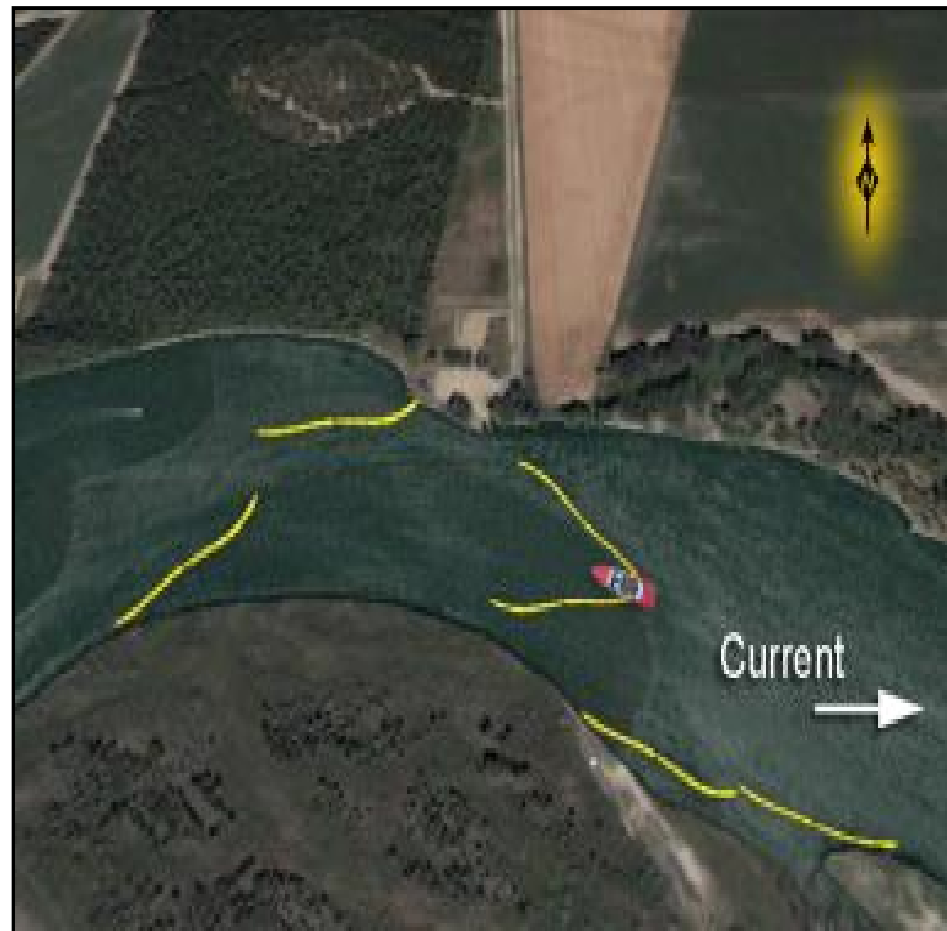
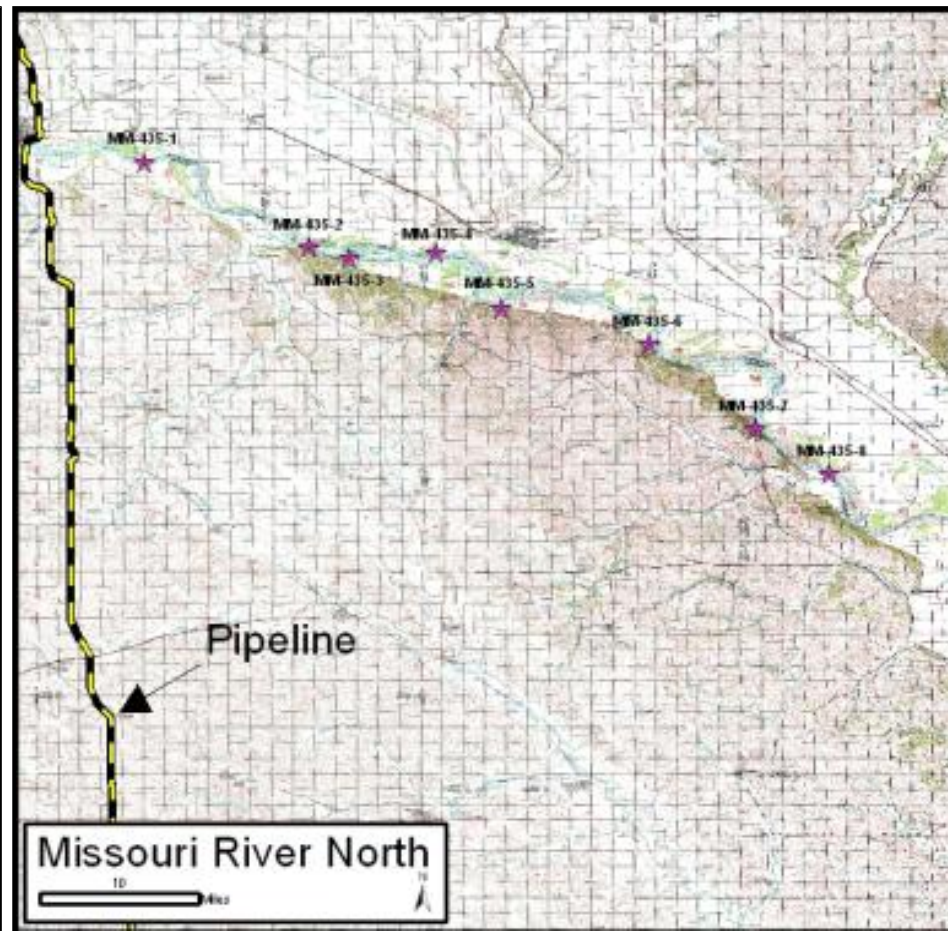
Establish Small 10' X 10' Personnel DECON next to Staging Area per Spill Mangement Guide.

Comments:

22.75 miles downstream from pipeline.

Note:This Tactical Control Plan is provided as a general guidance tool for response to an incident emanating from this location. The selection of response strategy equipment, manpower and deployment site may vary based on actual field conditions (e.g. terrain, weather conditions, product type/volume) and incident details.

Tactical Control Plan



INFORMATION

Location/Site:MM-435-4 Missouri River (North)
 Nearest City: Vermillion, South Dakota

Latitude/Longitude: 42° 45' 58" N, 97° 0' 13" W	Landowner: Clay County Vermillion, SD
Upstream CP: CP3	Phone: 605-677-7185
Downstream CP: CP5	

EQUIPMENT AND PERSONNEL

Equipment/Personnel	Quantity
Personnel	20
18" Containment Boom	8,000'
Response Trailer	2
Skimming System - Drum	2
Skimming System - Boat	1
Vacuum Truck	2
Response Boat	5
Roll-Off Boxes	2
Frak Tank	1

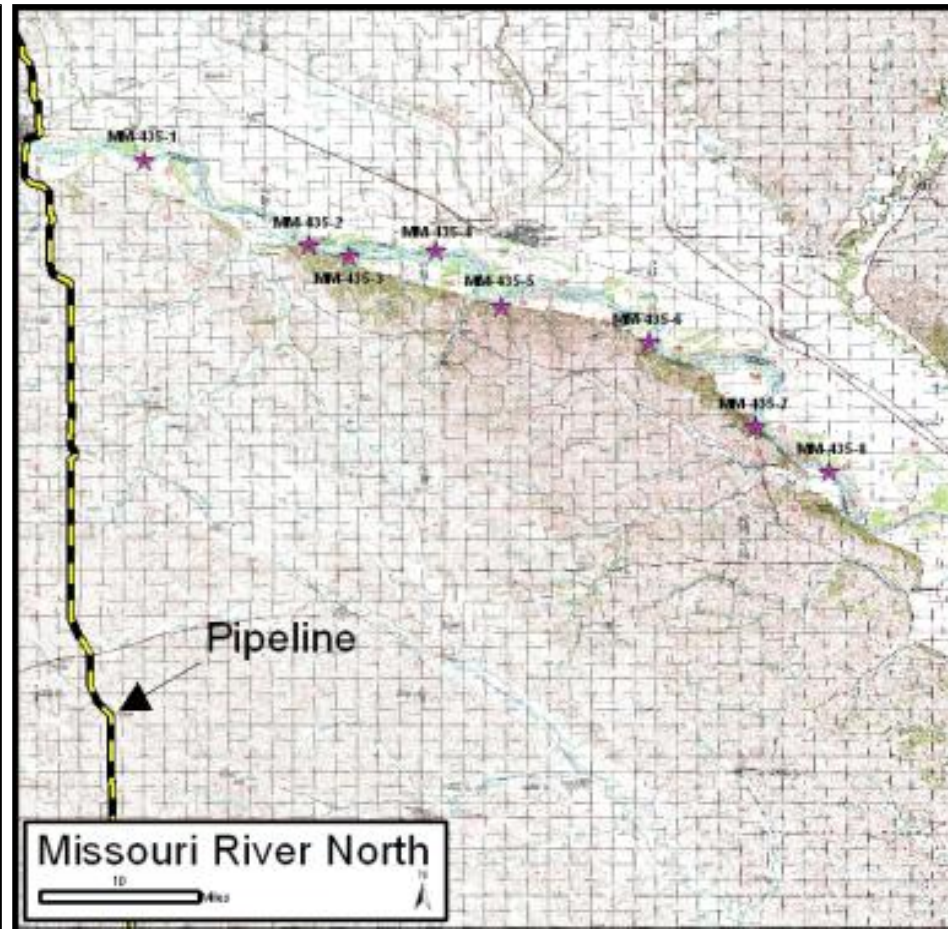
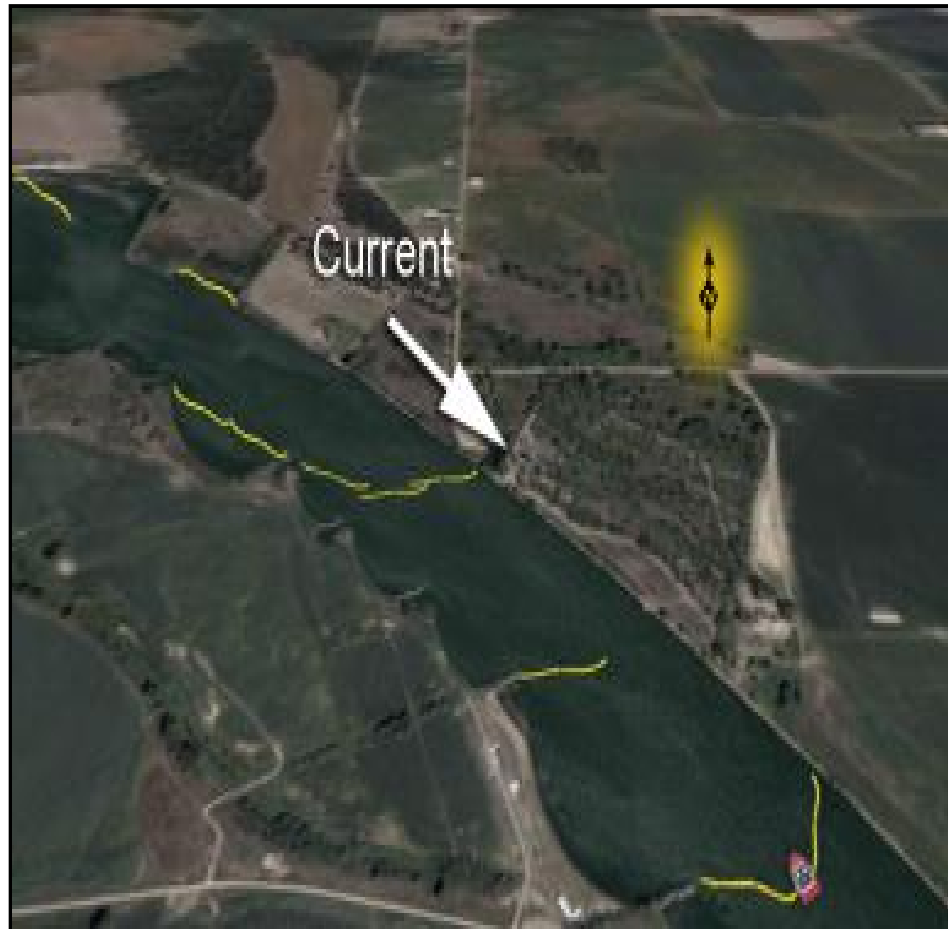
RESPONSE OBJECTIVES

- Establish perimeter to control access.
- Establish Staging Area and Personnel DECON.
- Deploy containment/deflection boom to prevent oil from progressing further.
- Deploy waterborne Skimmer assests for J, V, U shape collection of free floating oil.

SAFETY

- Develop a Site Safety Plan, brief all response personnel accordingly before and after the shifts.
- Require the wearing of Personal Floatation Device (PFD) within 6' of the water's edge.
- When Air and Water temperatures collectively are equal or less then 100 degrees Fahrenheit, Cold Weather Gear shall be worn.

RESPONSE STRATEGY



Nearest Response Equipment:

To Be Determined.

Access to Area:

From Sioux City, travel North/West 12.5 miles on Interstate 29, exit Jefferson. Head West 3.5 miles on 330th St., turn South onto 478th Ave. to river.

Location of Staging Area / Boat Launch:

Establish Staging Area as needed, large area available.

Boat ramp available.

Description of Watercourse:

Large meandering river with a high silt content and at least 6 distinct habitats. Flow is southeast, estimated 1200-3000ft wide, with a depth ranging from 10-45ft and a current of 3-10 knots.

Bank Characteristics:

North and South bank are general gently sloping with low vegetation and trees, areas of riprap.

Depending on the current, there may be eroding river banks with occasional bluffs. Numerous sand bars and islands can be found along the river.

Environmental Sensitivities:

Critical distance to population center.

Critical distance to Intakes and Environmental Sensitive Areas.

Decontamination Areas:

Establish Small 10' X 10' Personnel DECON next to Staging Area per Spill Mangement Guide.

Comments:

50.25 miles downstream from pipeline.

Note:This Tactical Control Plan is provided as a general guidance tool for response to an incident emanating from this location. The selection of response strategy equipment, manpower and deployment site may vary based on actual field conditions (e.g. terrain, weather conditions, product type/volume) and incident details.

INFORMATION

Location/Site:MM-435-8 Missouri River (North)
Nearest City: Ponca, Nebraska

Latitude/Longitude:
42° 33' 36" N, 96° 38' 41" W

Landowner: Union County
Elk Point, SD
Phone: 605-356-2679

Upstream CP: CP7

Downstream CP: N/A

EQUIPMENT AND PERSONNEL

Equipment/Personnel	Quantity
Personnel	20
18" Containment Boom	8,000'
Response Trailer	2
Skimming System - Drum	2
Skimming System - Boat	1
Vacuum Truck	2
Response Boat	5
Roll-Off Boxes	2
Frak Tank	1

RESPONSE OBJECTIVES

Establish perimeter to control access.

Establish Staging Area and Personnel DECON.

Deploy containment/deflection boom to prevent oil from progressing further.

Deploy waterborne Skimmer assests for J, V, U shape collection of free floating oil.

SAFETY

Develop a Site Safety Plan, brief all response personnel accordingly before and after the shifts.

Require the wearing of Personal Floatation Device (PFD) within 6' of the water's edge.

When Air and Water temperatures collectively are equal or less then 100 degrees Fahrenheit, Cold Weather Gear shall be worn.