

**LEGEND**

- 1/10 Mile Post
- Mile Post (2013-06-11)
- Keystone XL Centerline (2013-06-11)
- Transmission Line
- Pump Station

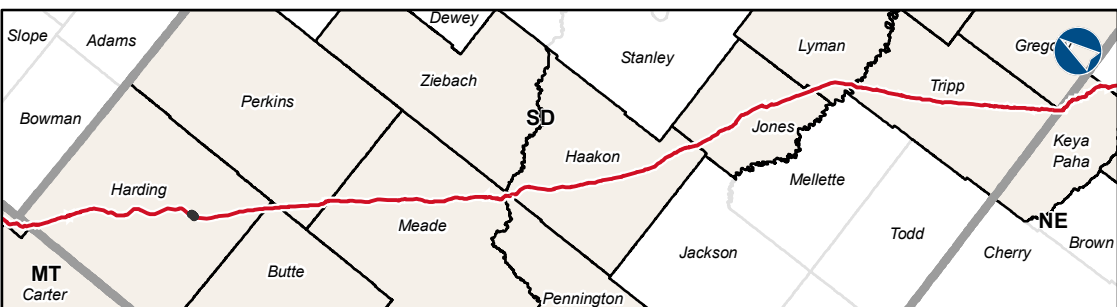
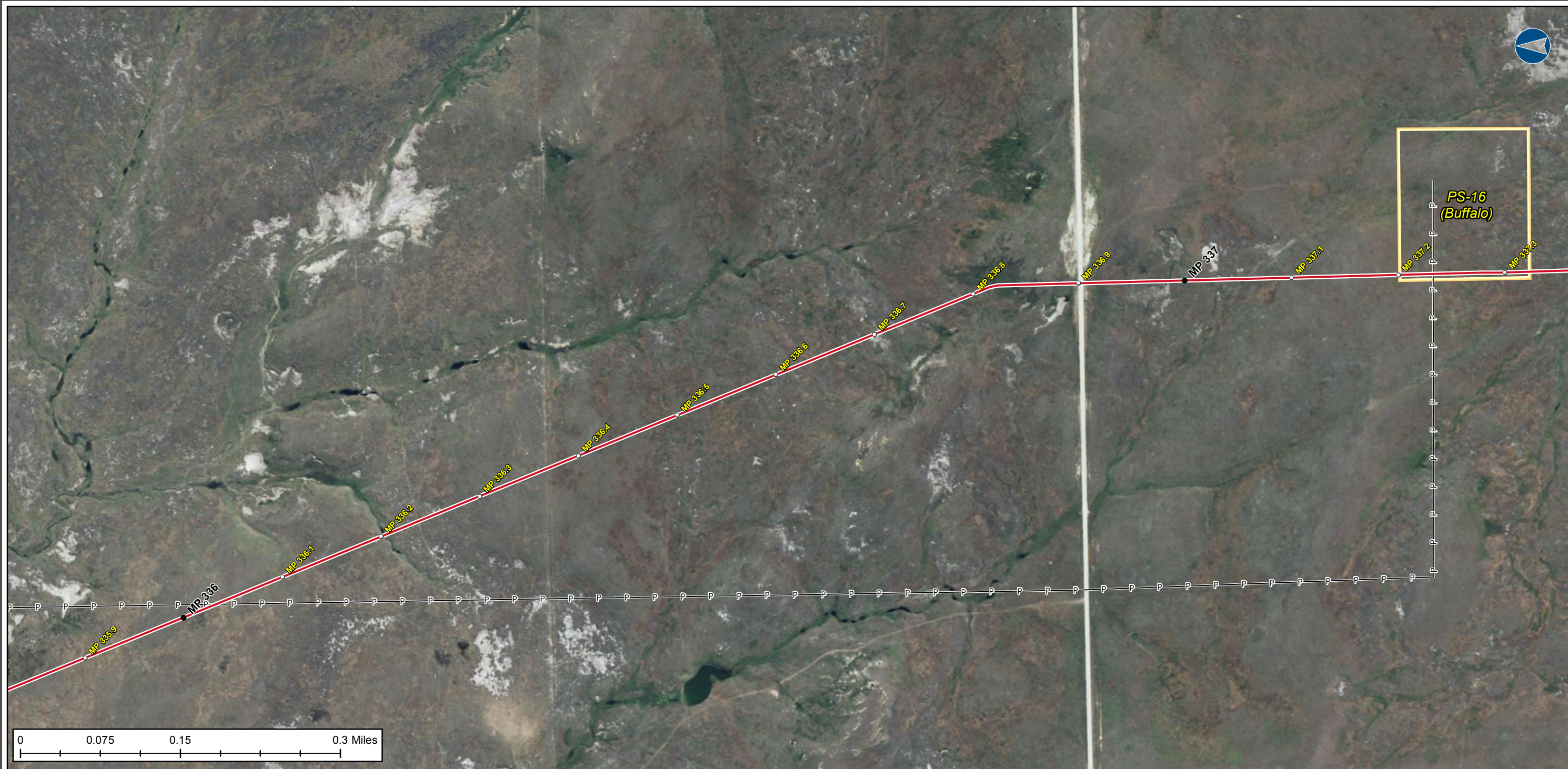
KEYSTONE XL PROJECT		
PUMP STATION / TRANSMISSION LINES		
COUNTY:	HARDING	DRAWN BY: CC
STATE:	SD	CHECKED BY: PD
REV. NO.:	REVISION	DATE
0	ISSUED FOR REVIEW	2013-09-03
<b>PRELIMINARY</b>		
DATE:	2013-09-03	PROJECTION: NAD83   UTM13 N

PREPARED BY:  
**exp** Energy Services Inc.  
 t: +1.850.385.5441 | f: +1.850.385.5523  
 1300 Metropolitan Blvd.  
 Tallahassee, FL 32308  
 U.S.A.  
[www.exp.com](http://www.exp.com)

• BUILDINGS • EARTH & ENVIRONMENT • ENERGY •  
 • INDUSTRIAL • INFRASTRUCTURE • SUSTAINABILITY •

DWG: XL-46-P-9317-T-PS15-17 SHEET: 1





**LEGEND**

- 1/10 Mile Post
- Mile Post (2013-06-11)
- Keystone XL Centerline (2013-06-11)
- P—P— Transmission Line
- Pump Station

**KEYSTONE XL PROJECT**  
**PUMP STATION / TRANSMISSION LINES**

COUNTY:	HARDING	DRAWN BY:	CC
STATE:	SD	CHECKED BY:	PD
REV. NO.:	REVISION	DATE	
0	ISSUED FOR REVIEW	2013-09-03	
<b>PRELIMINARY</b>			
DATE:	2013-09-03	PROJECTION:	NAD83   UTM13 N

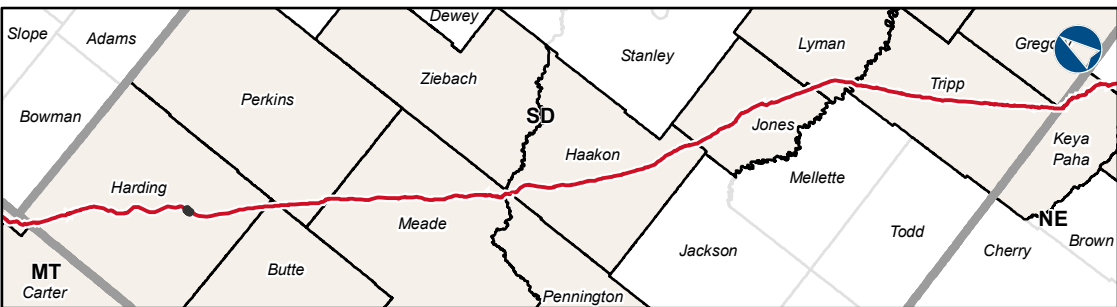
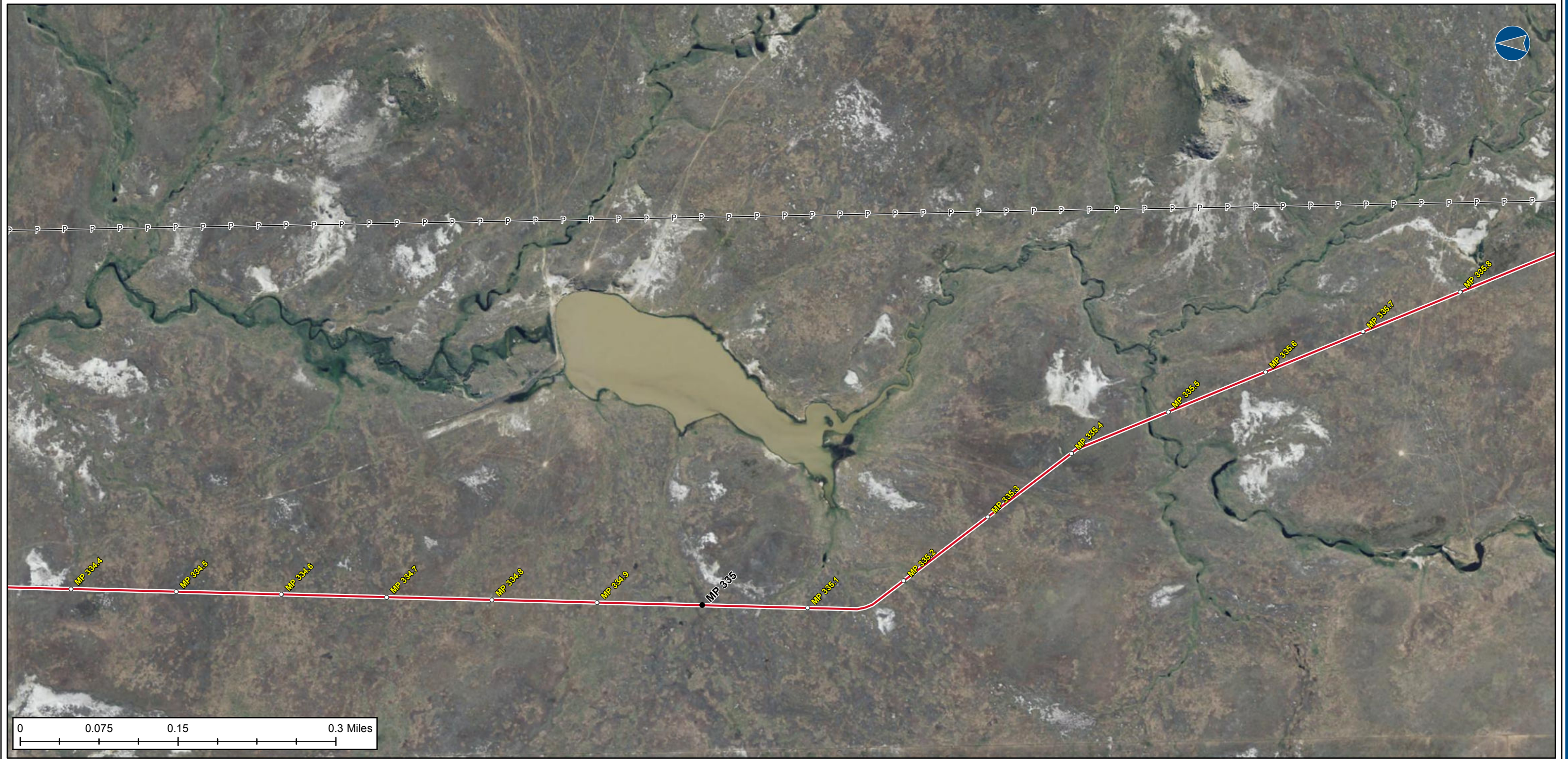
PREPARED BY:

**exp** Energy Services Inc.  
 t: +1.850.385.5441 | f: +1.850.385.5523  
 1300 Metropolitan Blvd.  
 Tallahassee, FL 32308  
 U.S.A.  
[www.exp.com](http://www.exp.com)



• BUILDINGS • EARTH & ENVIRONMENT • ENERGY •  
 • INDUSTRIAL • INFRASTRUCTURE • SUSTAINABILITY •





**LEGEND**

- 1/10 Mile Post
- Mile Post (2013-06-11)
- Keystone XL Centerline (2013-06-11)
- Transmission Line
- Pump Station

**KEYSTONE XL PROJECT**  
**PUMP STATION / TRANSMISSION LINES**

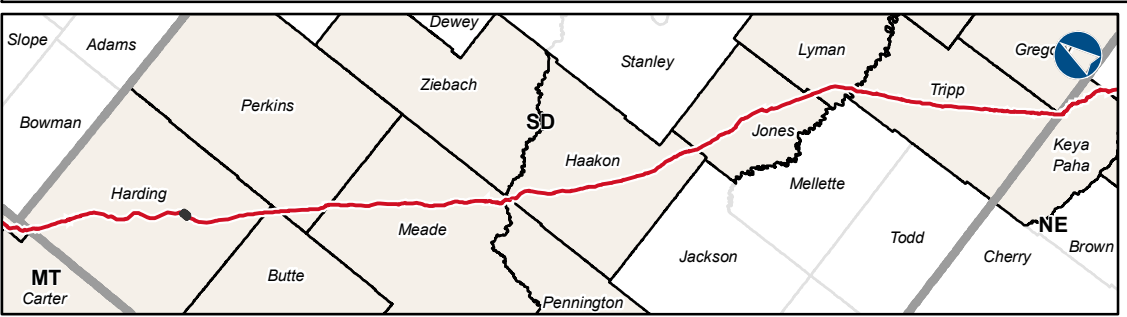
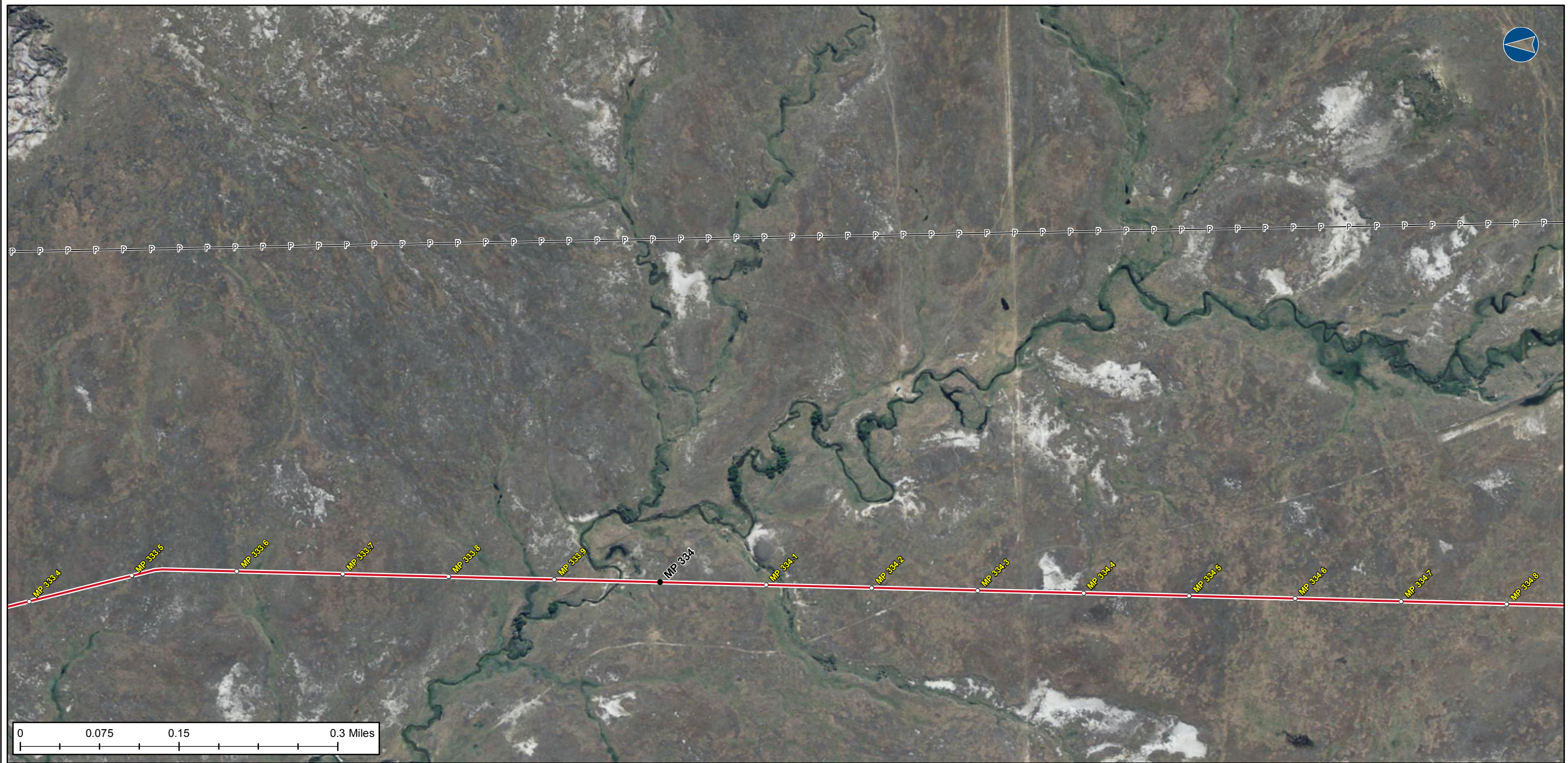
COUNTY:	HARDING	DRAWN BY:	CC
STATE:	SD	CHECKED BY:	PD
REV. NO.:	REVISION	DATE	
0	ISSUED FOR REVIEW	2013-09-03	
<b>PRELIMINARY</b>			
DATE:	2013-09-03	PROJECTION:	NAD83   UTM13 N

PREPARED BY:  
**exp** Energy Services Inc.  
t: +1.850.385.5441 | f: +1.850.385.5523  
1300 Metropolitan Blvd.  
Tallahassee, FL 32308  
U.S.A.  
[www.exp.com](http://www.exp.com)

• BUILDINGS • EARTH & ENVIRONMENT • ENERGY •  
• INDUSTRIAL • INFRASTRUCTURE • SUSTAINABILITY •

DWG: XL-46-P-9317-T-PS15-17 SHEET: 3





**LEGEND**

- 1/10 Mile Post
- Mile Post (2013-06-11)
- Keystone XL Centerline (2013-06-11)
- P-P- Transmission Line
- Pump Station

KEYSTONE XL PROJECT		
PUMP STATION / TRANSMISSION LINES		
COUNTY:	HARDING	DRAWN BY: CC
STATE:	SD	CHECKED BY: PD
REV. NO.:	REVISION	DATE
0	ISSUED FOR REVIEW	2013-09-03
<b>PRELIMINARY</b>		
DATE:	2013-09-03	PROJECTION: NAD83   UTM13 N

PREPARED BY:  
**exp** Energy Services Inc.  
 t: +1.850.385.5441 | f: +1.850.385.5523  
 1300 Metropolitan Blvd.  
 Tallahassee, FL 32308  
 U.S.A.  
[www.exp.com](http://www.exp.com)

• BUILDINGS • EARTH & ENVIRONMENT • ENERGY •  
 • INDUSTRIAL • INFRASTRUCTURE • SUSTAINABILITY •

DWG: XL-46-P-9317-T-PS15-17 SHEET: 4





- LEGEND**
- 1/10 Mile Post
  - Mile Post (2013-06-11)
  - Keystone XL Centerline (2013-06-11)
  - - - Transmission Line
  - Pump Station

**KEYSTONE XL PROJECT**  
**PUMP STATION / TRANSMISSION LINES**

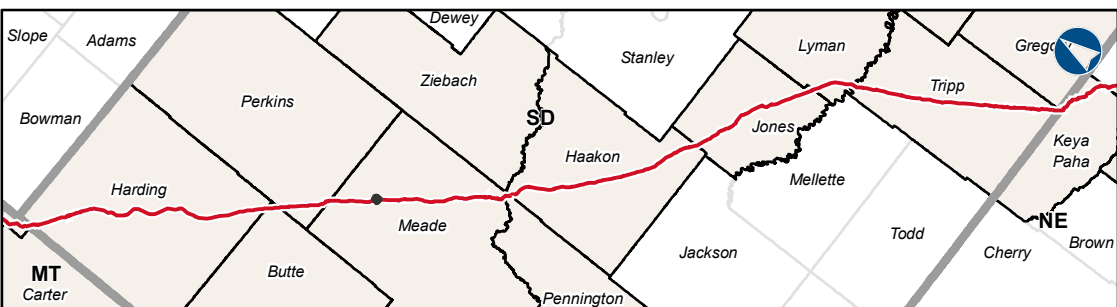
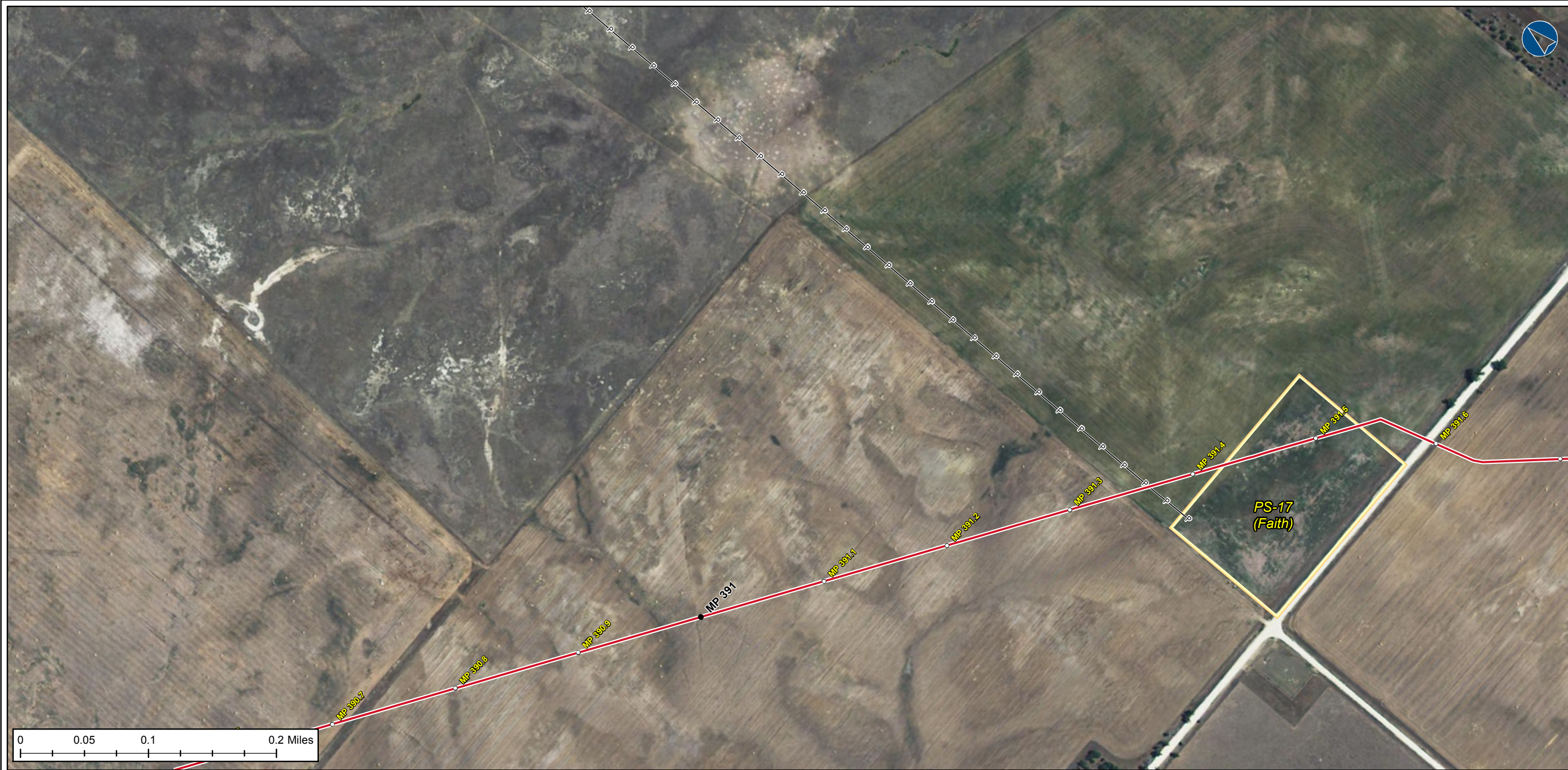
COUNTY:	HARDING	DRAWN BY:	CC
STATE:	SD	CHECKED BY:	PD
REV. NO.:	REVISION	DATE	
0	ISSUED FOR REVIEW	2013-09-03	
<b>PRELIMINARY</b>			
DATE:	2013-09-03	PROJECTION:	NAD83   UTM13 N

PREPARED BY:  
**exp** Energy Services Inc.  
t: +1.850.385.5441 | f: +1.850.385.5523  
1300 Metropolitan Blvd.  
Tallahassee, FL 32308  
U.S.A.  
[www.exp.com](http://www.exp.com)

• BUILDINGS • EARTH & ENVIRONMENT • ENERGY •  
• INDUSTRIAL • INFRASTRUCTURE • SUSTAINABILITY •

DWG: XL-46-P-9317-T-PS15-17 SHEET: 5





**LEGEND**

- 1/10 Mile Post
- Mile Post (2013-06-11)
- Keystone XL Centerline (2013-06-11)
- P—P— Transmission Line
- Pump Station

**KEYSTONE XL PROJECT**  
**PUMP STATION / TRANSMISSION LINES**

COUNTY:	MEADE	DRAWN BY:	CC
STATE:	SD	CHECKED BY:	PD
REV. NO.:	REVISION	DATE	
0	ISSUED FOR REVIEW	2013-09-03	

**PRELIMINARY**

DATE: 2013-09-03 PROJECTION: NAD83 | UTM13 N

PREPARED BY:

**exp** Energy Services Inc.

t: +1.850.385.5441 | f: +1.850.385.5523  
1300 Metropolitan Blvd.  
Tallahassee, FL 32308  
U.S.A.

www.exp.com



• BUILDINGS • EARTH & ENVIRONMENT • ENERGY •  
• INDUSTRIAL • INFRASTRUCTURE • SUSTAINABILITY •

DWG: XL-46-P-9317-T-PS15-17 SHEET: 6