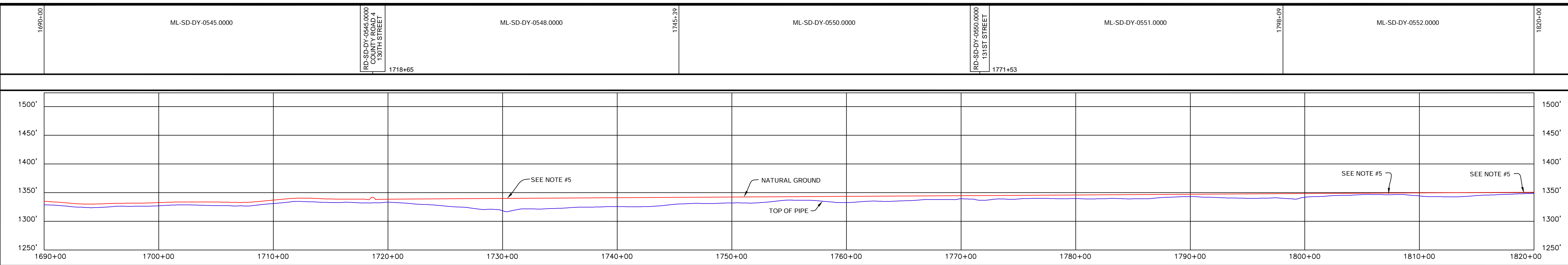


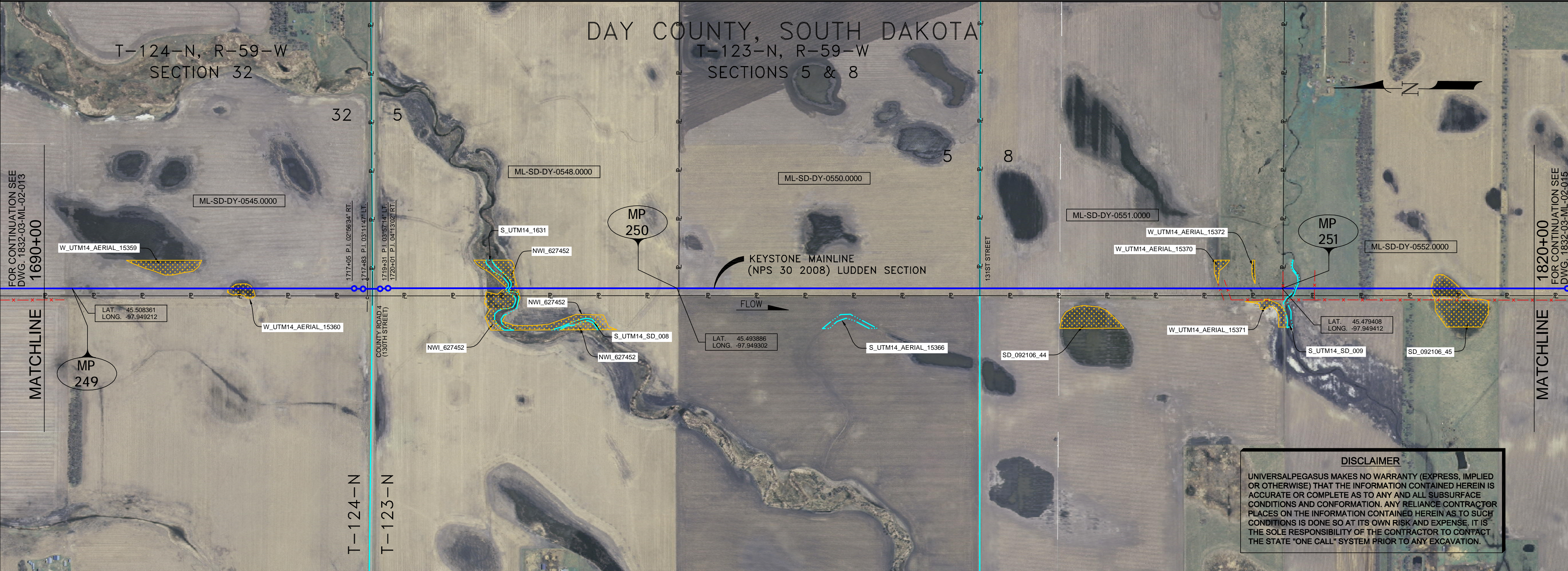
RIGHT-OF-WAY HORIZONTAL REPRESENTATION (2D)	TRACT NUMBER OWNERSHIP/AGENCY	LENGTH APPLICABLE DWG. NO.	LAND USE
1690+00	ML-SD-DY-0545.0000	RD-SD-DY-0545.0000 COUNTY ROAD 4 130TH STREET	1718+65
1700+00	ML-SD-DY-0548.0000	1718+31	1752+39
1710+00	ML-SD-DY-0550.0000	RD-SD-DY-0550.0000 131ST STREET	1771+53
1720+00	ML-SD-DY-0551.0000	1798+09	
1730+00	ML-SD-DY-0552.0000	1820+00	



- GENERAL NOTES**
- 1) ALL CHAINAGES ARE IN FEET UNLESS OTHERWISE SPECIFIED.
 - 2) DATUM ELEVATION AND PROJECTION ARE BASED ON MEAN SEA LEVEL AND NAD 83.
 - 3) FIELD PIPE LOCATING REQUIRED TO DETERMINE PLACEMENT OF PIPELINE WITHIN PERMANENT EASEMENT.
 - 4) UNLESS OTHERWISE NOTED, 48 INCHES MINIMUM COVER EXCEPT 36 INCHES IN AREAS OF CONSOLIDATED ROCK.
 - 5) NO ACTUAL AS-BUILT GROUND SHOTS WERE TAKEN AT THIS LOCATION. THE PROFILE REPRESENTS A PROJECTION FROM SHOTS TAKEN AT 150' TO 250' INTERVALS.
 - 6) THE TYPE OF COATING APPLIED TO THE FIELD WELDS DURING THE ORIGINAL CONSTRUCTION WAS TWO COMPONENT LIQUID EPOXY. THE COATING PRODUCTS USED WERE DENSO 7200 OR SPC SP-2888.
 - 7) THE SUBSTANTIAL CONSTRUCTION COMPLETION DATE, BASED ON CALIPER PIG RUN, WAS ON SEPTEMBER 01, 2009 FOR M.P. 195.68 TO M.P. 218.50, SEPTEMBER 02, 2009 FOR M.P. 218.50 TO M.P. 259.00 AND OCTOBER 08, 2009 FOR M.P. 259.21 TO M.P. 301.75.
 - 8) ORIGINAL IN-SERVICE DATE OF THE KEYSTONE PIPELINE (PHASE 1): JUNE 30, 2010.
 - 9) CPS CALCULATION DATE: MAY 2010.
 - 10) ORION STATION SERIES NUMBER: 1182700.
 - 11) TO DETERMINE THE MILE POST AT A GIVEN LOCATION, ADD THE STATION NUMBER FROM THIS SEGMENT TO STATION NUMBER 11453+73 AND DIVIDE BY 5280.

LEGEND

- KEYSTONE PIPELINE
- STATE BOUNDARY
- COUNTY/TOWNSHIP
- SECTIONS
- NATIONAL OR STATE RESERVATION BOUNDARY
- PROPERTY LINE
- FENCE
- EXCLUSIONARY FENCE
- POWER LINE
- TELEPHONE LINE
- BURIED CABLE
- WATER LINE
- SANITARY SEWER LINE
- STORM SEWER / DRAIN
- FOREIGN PIPELINE
- RAILROAD
- HIGHWAY / ROAD
- STREAM / DITCH
- WETLAND
- INTERSTATE ROUTE
- U.S. ROUTE
- STATE ROUTE
- POINT OF INTERSECTION (PI)
- PIPELINE MILEPOST
- DIRECTION OF FLOW
- HOUSE
- BUILDING
- WATER WELL
- MAINLINE VALVE



OPERATING AND TEST PRESSURE

1. THE MAXIMUM OPERATING PRESSURE (MOP) IS 1440 PSIG.
2. THE MINIMUM TEST PRESSURE WAS 1600 PSIG.

BILL OF MATERIALS (3D)

ITEM NO.	DESCRIPTION	QUANTITY
2	30" O.D. X 0.388" W.T. API-5L-X70 W/FBE COATING	12,831'
3	30" O.D. X 0.516" W.T. API-5L-X70 W/FBE COATING & ABRASION RESISTANT OVERCOAT	177'

REFERENCE DRAWINGS

REF. NO.	DRAWING NO.	REV. NO.	DRAWING TITLE

REVISIONS

NO.	DATE	REV. BY	CHK. BY	APPR. BY	ENV. APPR. BY	DESCRIPTION
1	5/17/08	UEI	RDG	LAG	SEC	ISSUED FOR CONSTRUCTION
2	8/17/08	UEI				ISSUED FOR AS-BUILT
						1832-03-ML-02-014
						REPLACES COVERAGE OF IFC DRAWINGS
						1832-03-ML-02-022
						1832-03-ML-02-023

ENGINEERING RECORDS

DRAWN BY	INITIAL	DATE	ENV. APPR.	INITIAL	DATE
UEI		10/02/01			

PROFESSIONAL ENGINEER

NAME	STATE	LIC#	REV#	DATE
LOYS ALVIN GRAY, III	SD	CE9004		

SCALE: 0 125 250 500 Feet

TransCanada
In business to deliver

KEYSTONE MAINLINE (NPS 30 2008) LUDDEN SECTION

SPREAD 2A DISCIPLINE 03

AS-BUILT ALIGNMENT

M.P. 248.95 TO M.P. 251.42

SHEET 14 OF 19 SHEETS

STA. 1690+99 TO STA. 1821+07 (3D)

DRAWING NO. 1832-03-ML-02-014 REV. 2

PIPELINE SCHEMATIC

- HEAVY WALL PIPE
- WELD FITTING
- TRANSITION PIECE
- CASING PIPE
- CONCRETE COATING
- SET-ON WEIGHTS
- PIPELINE WARNING SIGN
- PIPELINE MARKER
- MATERIAL ITEM
- GROUNDING MAT
- ZINC RIBBON
- AERIAL MARKER
- CATHODIC TEST STATION
- MAINLINE VALVE
- CHECK VALVE
- OPEN CUT
- BORE
- DRINKING WATER USA
- ECOLOGICAL USA
- HIGHLY POPULATED AREA
- OPERATOR (KEYSTONE) DEFINED
- OTHER POPULATED AREA
- SOURCE WATER PROTECTION AREA
- WELLHEAD PROTECTION AREA

HORIZONTAL STATIONS (2D)

STATION	DESCRIPTION
1690+00	MATCHLINE 1690+00
1696+47	BEGIN SLOUGH
1707+50	CL SLOUGH
1708+37	END SLOUGH
1712+43	5.8' CVR.
1714+36	6.3' CVR.
1715+35	6.2' CVR.
1716+08	5.1' CVR.
1718+08	5.6' CVR.
1718+04	P.I. 0371.127' L.L.
1719+42	FIBER OPTIC CABLE
1719+42	3.6' CUT (ABOVE)
1719+42	3.6' CUT (BELOW)
1719+42	EDGE OF ROAD
1719+77	EDGE OF ROAD
1719+31	P.I. 0357.14' L.L.
1720+07	P.I. 0413.02' RT.
1720+01	P.I. 0413.02' RT.
1726+27	M.P. 250
1772+40	EDGE OF ROAD
1772+47	CL 131ST STREET
1772+47	EDGE OF ROAD
1782+56	FENCE (ED WIRE)
1783+23	FENCE (BARBED WIRE)
1784+09	FENCE (BARBED WIRE)
1784+07	M.P. 251
1784+14	FENCE (ED WIRE)
1784+03	BEGIN SLOUGH
1784+53	END SLOUGH
1800+48	FENCE (BARBED WIRE)
1801+48	FENCE (BARBED WIRE)
1810+79	BEGIN SLOUGH
1812+46	CL SLOUGH
1814+22	END SLOUGH
1811+46	BEGIN SLOUGH
1813+47	CL SLOUGH
1815+28	END SLOUGH
1821+07	MATCHLINE 1821+07

ENVIRONMENTAL MITIGATION/RECLAMATION STATIONS (2D)

STATION	REPRESENTATION	DESCRIPTION
1690+99	②	2.810' FBE
1719+09	③	FBE & ARO BR.
1731+13	⑤	
1731+48	⑥	
1736+27	②	5.205' FBE
1772+42	③	FBE & ARO O.C.
1772+91	②	4.816' FBE
1811+41	①	
1814+08	(2)	

TEST SECTIONS (3D)

TEST SECTION 2A-4 ILTO-02-2010

ENVIRONMENTAL MITIGATION/RECLAMATION STATIONS (2D)

STATION	REPRESENTATION	DESCRIPTION
1690+99	②	2.810' FBE
1719+09	③	FBE & ARO BR.
1731+13	⑤	
1731+48	⑥	
1736+27	②	5.205' FBE
1772+42	③	FBE & ARO O.C.
1772+91	②	4.816' FBE
1811+41	①	
1814+08	(2)	