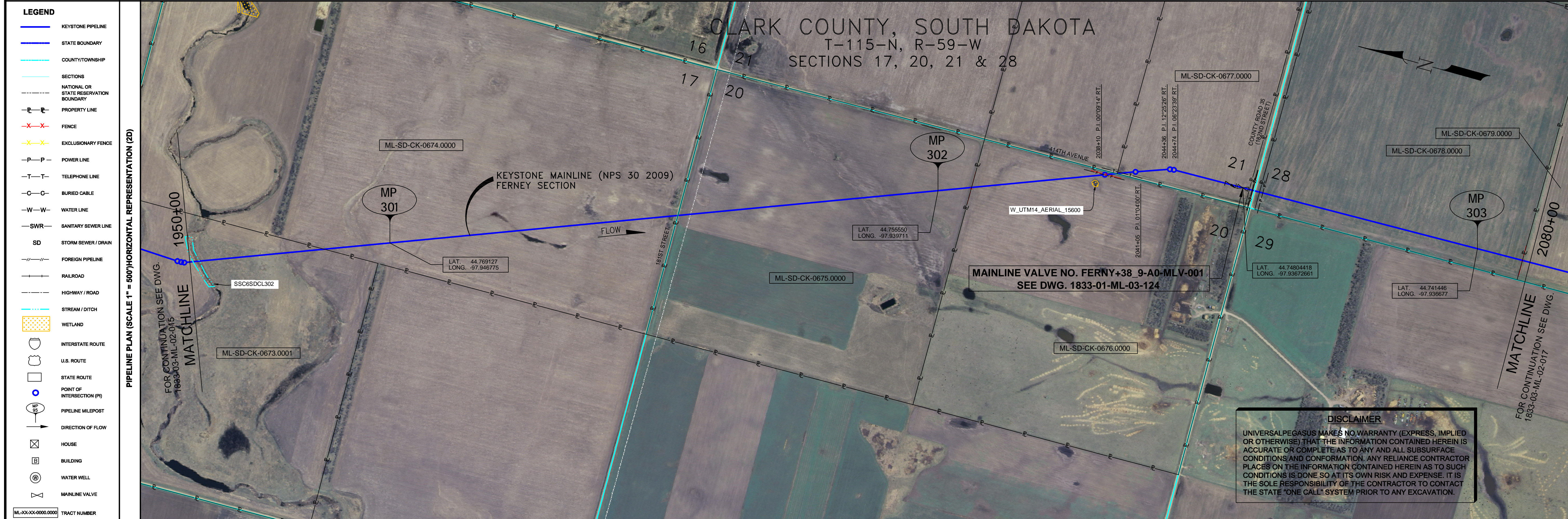


- GENERAL NOTES**
- 1) ALL CHAINAGES ARE IN FEET UNLESS OTHERWISE SPECIFIED.
 - 2) DATUM ELEVATION AND PROJECTION ARE BASED ON MEAN SEA LEVEL AND NAD 83.
 - 3) FIELD PIPE LOCATING REQUIRED TO DETERMINE PLACEMENT OF PIPELINE WITHIN PERMANENT EASEMENT.
 - 4) UNLESS OTHERWISE NOTED, 48 INCHES MINIMUM COVER EXCEPT 36 INCHES IN AREAS OF CONSOLIDATED ROCK.
 - 5) NO ACTUAL AS-BUILT GROUND SHOTS WERE TAKEN AT THIS LOCATION. THE PROFILE REPRESENTS A PROJECTION FROM SHOTS TAKEN AT 150' TO 250' INTERVALS.
 - 6) THE TYPE OF COATING APPLIED TO THE FIELD WELDS DURING THE ORIGINAL CONSTRUCTION WAS TWO COMPONENT LIQUID EPOXY. THE COATING PRODUCTS USED WERE DENS0 7200 OR SPC SP-2888.
 - 7) THE SUBSTANTIAL CONSTRUCTION COMPLETION DATE, BASED ON CALIPER PIG RUN, WAS OCTOBER 08, 2009 FOR M.P. 259.21 TO M.P. 301.75 AND OCTOBER 10, 2009 FOR M.P. 301.75 TO M.P. 343.98.
 - 8) ORIGINAL IN-SERVICE DATE OF THE KEYSTONE PIPELINE (PHASE 1): JUNE 30, 2010.
 - 9) CPS CALCULATION DATE: MAY 2010.
 - 10) ORION STATION SERIES NUMBER: 1182700.
 - 11) TO DETERMINE THE MILE POST AT A GIVEN LOCATION, ADD THE 3D STATION NUMBER FROM THIS SEGMENT TO STATION NUMBER 13922+16 AND DIVIDE BY 5280.



OPERATING AND TEST PRESSURE

1. THE MAXIMUM OPERATING PRESSURE (MOP) IS 1400 PSIG.
2. THE MINIMUM TEST PRESSURE WAS 1800 PSIG.

BILL OF MATERIALS (3D)

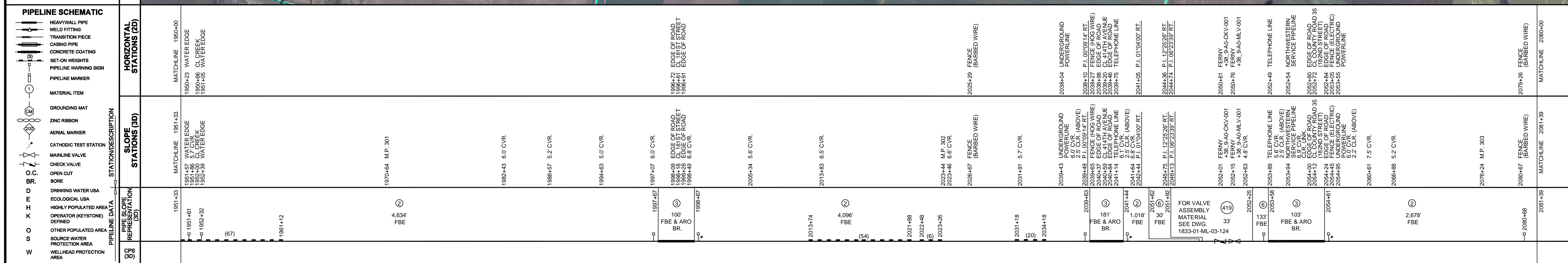
ITEM NO.	DESCRIPTION	QUANTITY
2	30" O.D. X 0.388" W.T., API-SLX-70 W/FBE COATING	12,426'
3	30" O.D. X 0.516" W.T., API-SLX-70 W/FBE COATING & ABRASION RESISTANT OVERCOAT	384'
6	30" O.D. X 0.428" W.T., API-SLX-70 W/FBE COATING	163'
419	MAINLINE VALVE ASSEMBLY FERNY+38 9-A0-MLV-001 (+33)	1 EA
	PIPELINE MARKERS	0 EA
	PIPELINE WARNING SIGNS	3 EA
	CATHODIC TEST STATION	3 EA
	AERIAL MARKER	0 EA

REFERENCE DRAWINGS

REF. NO.	DRAWING NO.	REV. NO.	DRAWING TITLE
419	1833-01-ML-03-124	3	MAINLINE VALVE FERNY+38 9-A0-MLV-001
	1833-01-ML-03-125	0	MAINLINE VALVE FERNY+38 9-A0-MLV-001

REVISIONS

NO.	DATE	REV. BY	CHK. APPR. BY	ENV. APPR. BY	DESCRIPTION
1	5/17/08	UEI	RDG	LAG	ISSUED FOR CONSTRUCTION
2	9/17/08	UEI			ISSUED FOR AS-BUILT
					1833-03-ML-02-016 REPLACES COVERAGE OF IFC DRAWINGS
					1833-03-ML-02-025
					1833-03-ML-02-026

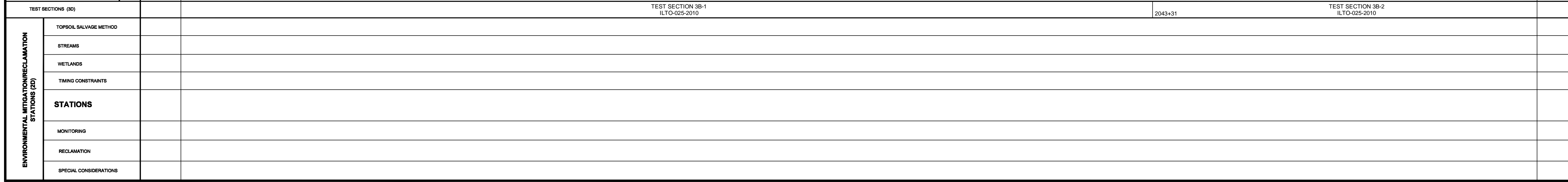


ENGINEERING RECORDS

DRAWN BY	INITIAL	DATE	ENV. APPR. BY	INITIAL	DATE
UEI		10/02/08			

PROFESSIONAL ENGINEER

NAME	STATE	LIC#	REV#	DATE
LOYS ALVIN GRAY, III	SD	CE9004		



SCALE: 0 125 250 500 Feet

TransCanada
In business to deliver

KEYSTONE MAINLINE (NPS 30 2009) FERNY SECTION

AS-BUILT ALIGNMENT
M.P. 300.63 TO M.P. 303.10
SHEET 16 OF 20 SHEETS
STA. 1951+33 TO STA. 2081+39 (3D)
DRAWING NO. 1833-03-ML-02-016 REV. 2