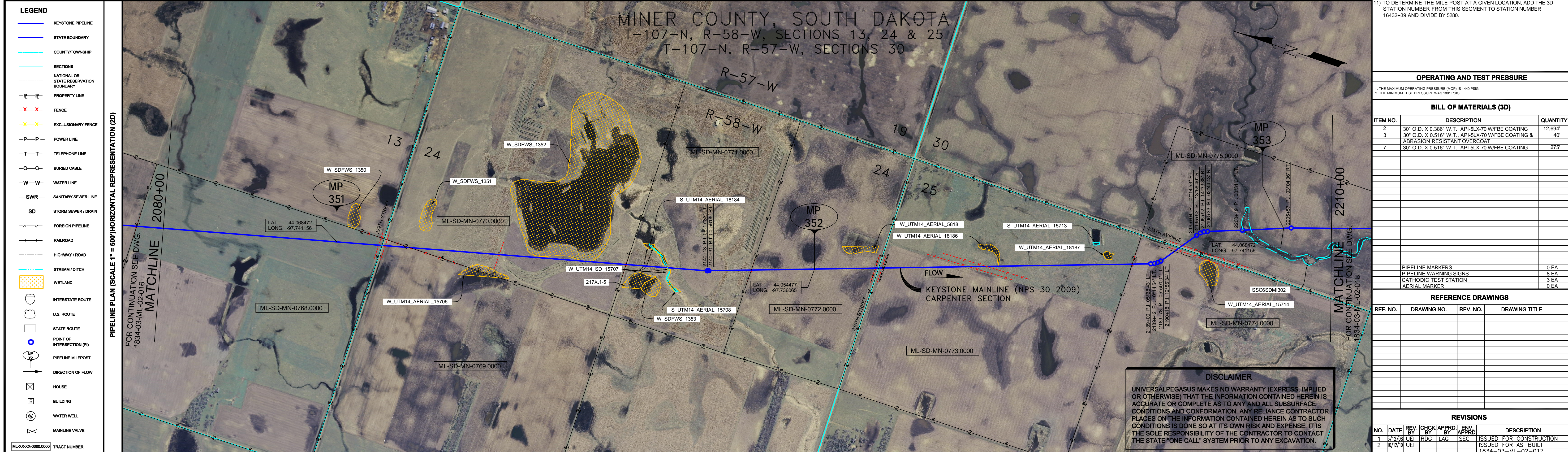


- GENERAL NOTES**
- 1) ALL CHAINAGES ARE IN FEET UNLESS OTHERWISE SPECIFIED.
  - 2) DATUM ELEVATION AND PROJECTION ARE BASED ON MEAN SEA LEVEL AND NAD 83.
  - 3) FIELD PIPE LOCATING REQUIRED TO DETERMINE PLACEMENT OF PIPELINE WITHIN PERMANENT EASEMENT.
  - 4) UNLESS OTHERWISE NOTED, 48 INCHES MINIMUM COVER EXCEPT 36 INCHES IN AREAS OF CONSOLIDATED ROCK.
  - 5) NO ACTUAL AS-BUILT GROUND SHOTS WERE TAKEN AT THIS LOCATION. THE PROFILE REPRESENTS A PROJECTION FROM SHOTS TAKEN AT 150' TO 250' INTERVALS.
  - 6) THE TYPE OF COATING APPLIED TO THE FIELD WELDS DURING THE ORIGINAL CONSTRUCTION WAS TWO COMPONENT LIQUID EPOXY. THE COATING PRODUCTS USED WERE DENSO 7200 OR SPC SP-2888.
  - 7) THE SUBSTANTIAL CONSTRUCTION COMPLETION DATE, BASED ON CALIPER PIG RUN, WAS OCTOBER 10, 2009 FOR M.P. 301.75 TO M.P. 343.98 AND OCTOBER 31, 2009 FOR M.P. 343.98 TO M.P. 377.31.
  - 8) ORIGINAL IN-SERVICE DATE OF THE KEYSTONE PIPELINE (PHASE 1): JUNE 30, 2010.
  - 9) CPS CALCULATION DATE: MAY 2010.
  - 10) ORION STATION SERIES NUMBER: 1182700.
  - 11) TO DETERMINE THE MILE POST AT A GIVEN LOCATION, ADD THE 3D STATION NUMBER FROM THIS SEGMENT TO STATION NUMBER 16432+39 AND DIVIDE BY 5280.



**OPERATING AND TEST PRESSURE**

1. THE MAXIMUM OPERATING PRESSURE (MOP) IS 1400 PSIG.
2. THE MINIMUM TEST PRESSURE WAS 1600 PSIG.

**BILL OF MATERIALS (3D)**

ITEM NO.	DESCRIPTION	QUANTITY
2	30" O.D. X 0.386" W.T., API-5LX-70/WFBE COATING	12,694'
3	30" O.D. X 0.516" W.T., API-5LX-70/WFBE COATING & ABRASION RESISTANT OVERCOAT	40'
7	30" O.D. X 0.516" W.T., API-5LX-70/WFBE COATING	275'

- LEGEND**
- KEYSTONE PIPELINE
  - STATE BOUNDARY
  - COUNTY/TOWNSHIP
  - SECTIONS
  - NATIONAL OR STATE RESERVATION BOUNDARY
  - PROPERTY LINE
  - FENCE
  - EXCLUSIONARY FENCE
  - POWER LINE
  - TELEPHONE LINE
  - BURIED CABLE
  - WATER LINE
  - SANITARY SEWER LINE
  - SD
  - FOREIGN PIPELINE
  - RAILROAD
  - HIGHWAY/ROAD
  - STREAM/DITCH
  - WETLAND
  - INTERSTATE ROUTE
  - U.S. ROUTE
  - STATE ROUTE
  - POINT OF INTERSECTION (PI)
  - PIPELINE MILEPOST
  - DIRECTION OF FLOW
  - HOUSE
  - BUILDING
  - WATER WELL
  - MAINLINE VALVE

**REFERENCE DRAWINGS**

REF. NO.	DRAWING NO.	REV. NO.	DRAWING TITLE

**DISCLAIMER**  
 UNIVERSALPEGASUS MAKES NO WARRANTY (EXPRESS, IMPLIED OR OTHERWISE) THAT THE INFORMATION CONTAINED HEREIN IS ACCURATE OR COMPLETE AS TO ANY AND ALL SUBSURFACE CONDITIONS AND CONFORMATION. ANY RELIANCE CONTRACTOR PLACES ON THE INFORMATION CONTAINED HEREIN AS TO SUCH CONDITIONS IS DONE SO AT ITS OWN RISK AND EXPENSE. IT IS THE SOLE RESPONSIBILITY OF THE CONTRACTOR TO CONTACT THE STATE "ONE CALL" SYSTEM PRIOR TO ANY EXCAVATION.

**REVISIONS**

NO.	DATE	REV. BY	CHK. BY	APP. BY	REV. BY	APP. BY	DESCRIPTION
1	5/7/08	UEI	RDG	LAG	SEC		ISSUED FOR CONSTRUCTION
2	10/17/09	UEI					ISSUED FOR AS-BUILT

**PIPELINE SCHEMATIC**

STATION	DESCRIPTION
2103+43	FENCE (BARBED WIRE)
2104+18	CL 230TH STREET
2104+59	FENCE (BARBED WIRE)
2107+21	FENCE (BARBED WIRE)
2109+46	FENCE (BARBED WIRE)
2117+14	FENCE (BARBED WIRE)
2131+18	FENCE (BARBED WIRE)
2136+20	BEGINS OULCH
2137+40	END OULCH
2137+43	5.7 CVR
2141+34	P.I. 0817333 LT.
2141+52	P.I. 0076052 RT.
2144+88	FENCE (BARBED WIRE)
2153+21	M.P. 352
2158+47	5.1 CVR
2158+48	FENCE (BARBED WIRE)
2158+49	POWERLINE HT. = 35'
2158+50	EDGE OF ROAD
2158+51	EDGE OF ROAD
2158+52	EDGE OF ROAD
2158+53	EDGE OF ROAD
2158+54	EDGE OF ROAD
2158+55	EDGE OF ROAD
2158+56	EDGE OF ROAD
2158+57	EDGE OF ROAD
2158+58	EDGE OF ROAD
2158+59	EDGE OF ROAD
2158+60	EDGE OF ROAD
2158+61	EDGE OF ROAD
2158+62	EDGE OF ROAD
2158+63	EDGE OF ROAD
2158+64	EDGE OF ROAD
2158+65	EDGE OF ROAD
2158+66	EDGE OF ROAD
2158+67	EDGE OF ROAD
2158+68	EDGE OF ROAD
2158+69	EDGE OF ROAD
2158+70	EDGE OF ROAD
2158+71	EDGE OF ROAD
2158+72	EDGE OF ROAD
2158+73	EDGE OF ROAD
2158+74	EDGE OF ROAD
2158+75	EDGE OF ROAD
2158+76	EDGE OF ROAD
2158+77	EDGE OF ROAD
2158+78	EDGE OF ROAD
2158+79	EDGE OF ROAD
2158+80	EDGE OF ROAD
2158+81	EDGE OF ROAD
2158+82	EDGE OF ROAD
2158+83	EDGE OF ROAD
2158+84	EDGE OF ROAD
2158+85	EDGE OF ROAD
2158+86	EDGE OF ROAD
2158+87	EDGE OF ROAD
2158+88	EDGE OF ROAD
2158+89	EDGE OF ROAD
2158+90	EDGE OF ROAD
2158+91	EDGE OF ROAD
2158+92	EDGE OF ROAD
2158+93	EDGE OF ROAD
2158+94	EDGE OF ROAD
2158+95	EDGE OF ROAD
2158+96	EDGE OF ROAD
2158+97	EDGE OF ROAD
2158+98	EDGE OF ROAD
2158+99	EDGE OF ROAD
2159+00	EDGE OF ROAD
2159+01	EDGE OF ROAD
2159+02	EDGE OF ROAD
2159+03	EDGE OF ROAD
2159+04	EDGE OF ROAD
2159+05	EDGE OF ROAD
2159+06	EDGE OF ROAD
2159+07	EDGE OF ROAD
2159+08	EDGE OF ROAD
2159+09	EDGE OF ROAD
2159+10	EDGE OF ROAD
2159+11	EDGE OF ROAD
2159+12	EDGE OF ROAD
2159+13	EDGE OF ROAD
2159+14	EDGE OF ROAD
2159+15	EDGE OF ROAD
2159+16	EDGE OF ROAD
2159+17	EDGE OF ROAD
2159+18	EDGE OF ROAD
2159+19	EDGE OF ROAD
2159+20	EDGE OF ROAD
2159+21	EDGE OF ROAD
2159+22	EDGE OF ROAD
2159+23	EDGE OF ROAD
2159+24	EDGE OF ROAD
2159+25	EDGE OF ROAD
2159+26	EDGE OF ROAD
2159+27	EDGE OF ROAD
2159+28	EDGE OF ROAD
2159+29	EDGE OF ROAD
2159+30	EDGE OF ROAD
2159+31	EDGE OF ROAD
2159+32	EDGE OF ROAD
2159+33	EDGE OF ROAD
2159+34	EDGE OF ROAD
2159+35	EDGE OF ROAD
2159+36	EDGE OF ROAD
2159+37	EDGE OF ROAD
2159+38	EDGE OF ROAD
2159+39	EDGE OF ROAD
2159+40	EDGE OF ROAD
2159+41	EDGE OF ROAD
2159+42	EDGE OF ROAD
2159+43	EDGE OF ROAD
2159+44	EDGE OF ROAD
2159+45	EDGE OF ROAD
2159+46	EDGE OF ROAD
2159+47	EDGE OF ROAD
2159+48	EDGE OF ROAD
2159+49	EDGE OF ROAD
2159+50	EDGE OF ROAD
2159+51	EDGE OF ROAD
2159+52	EDGE OF ROAD
2159+53	EDGE OF ROAD
2159+54	EDGE OF ROAD
2159+55	EDGE OF ROAD
2159+56	EDGE OF ROAD
2159+57	EDGE OF ROAD
2159+58	EDGE OF ROAD
2159+59	EDGE OF ROAD
2159+60	EDGE OF ROAD
2159+61	EDGE OF ROAD
2159+62	EDGE OF ROAD
2159+63	EDGE OF ROAD
2159+64	EDGE OF ROAD
2159+65	EDGE OF ROAD
2159+66	EDGE OF ROAD
2159+67	EDGE OF ROAD
2159+68	EDGE OF ROAD
2159+69	EDGE OF ROAD
2159+70	EDGE OF ROAD
2159+71	EDGE OF ROAD
2159+72	EDGE OF ROAD
2159+73	EDGE OF ROAD
2159+74	EDGE OF ROAD
2159+75	EDGE OF ROAD
2159+76	EDGE OF ROAD
2159+77	EDGE OF ROAD
2159+78	EDGE OF ROAD
2159+79	EDGE OF ROAD
2159+80	EDGE OF ROAD
2159+81	EDGE OF ROAD
2159+82	EDGE OF ROAD
2159+83	EDGE OF ROAD
2159+84	EDGE OF ROAD
2159+85	EDGE OF ROAD
2159+86	EDGE OF ROAD
2159+87	EDGE OF ROAD
2159+88	EDGE OF ROAD
2159+89	EDGE OF ROAD
2159+90	EDGE OF ROAD
2159+91	EDGE OF ROAD
2159+92	EDGE OF ROAD
2159+93	EDGE OF ROAD
2159+94	EDGE OF ROAD
2159+95	EDGE OF ROAD
2159+96	EDGE OF ROAD
2159+97	EDGE OF ROAD
2159+98	EDGE OF ROAD
2159+99	EDGE OF ROAD
2160+00	EDGE OF ROAD

**ENGINEERING RECORDS**

DRAWN BY	INITIAL	DATE	ENY APPRD.	INITIAL	DATE
UEI		10/02/15			

**PROFESSIONAL ENGINEER**

NAME	STATE	LIC#	REV#	DATE
LOYIS ALVIN GRAY, III	SD	CE9004		

**TEST SECTIONS (3D)**

TEST SECTION 3B-3  
 ILTG-026-2010

**ENVIRONMENTAL MITIGATION/RECLAMATION STATIONS (2D)**

TOPSOIL SALVAGE METHOD

STREAMS

WETLANDS

TIMING CONSTRAINTS

**STATIONS**

MONITORING

RECLAMATION

SPECIAL CONSIDERATIONS

**SCALE:** 0 125 250 500 Feet

**TransCanada**  
 In business to deliver

KEYSTONE MAINLINE (NPS 30 2009) CARPENTER SECTION

**AS-BUILT ALIGNMENT**

M.P. 350.64 TO M.P. 353.10  
 SHEET 17 OF 20 SHEETS

STA. 2081+17 TO STA. 2211+26 (3D)

DRAWING NO. 1834-03-ML-02-017 REV. 2