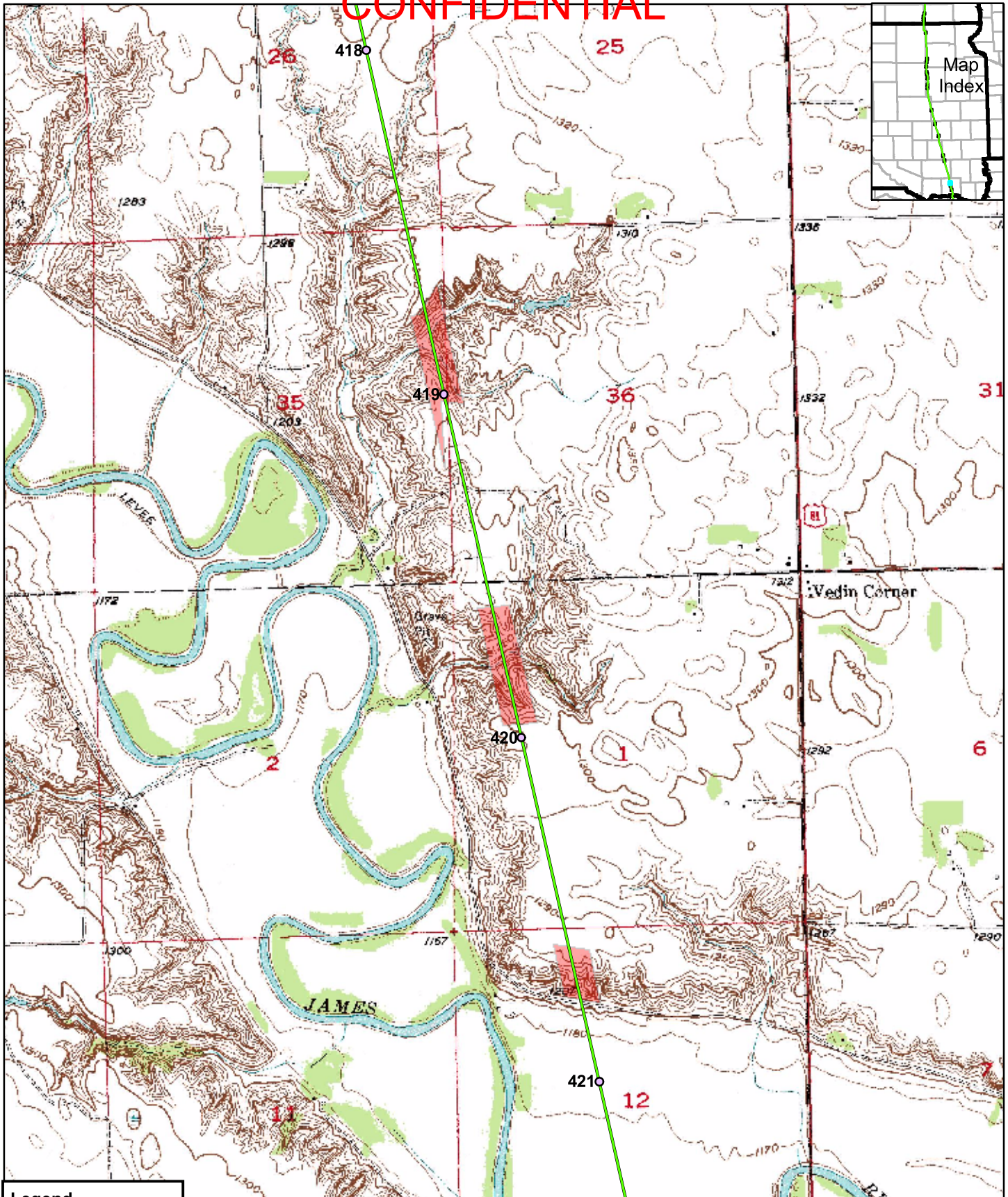


CONFIDENTIAL



Feature TDH1SDYA005: This site has the most junegrass (*Koeleria macrantha*) of any site visited.

CONFIDENTIAL



Legend

- Mileposts
- Proposed Centerline
- Surveyed Grasslands
- State Boundary
- County Boundary

Keystone Pipeline Project



0 1,000 2,000 Feet

CONFIDENTIAL

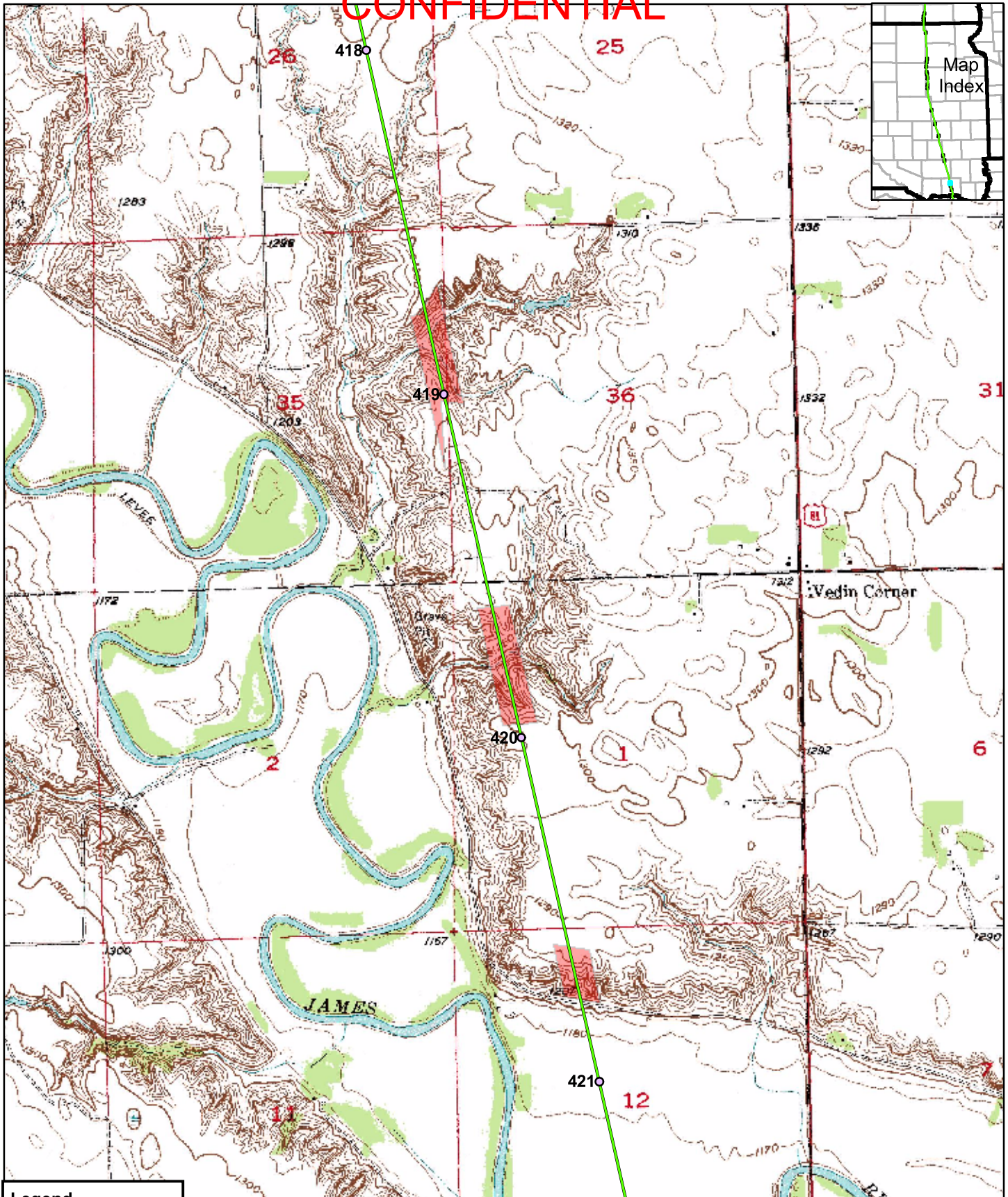
Feature ID	Survey Date	Start MP	End MP	County	State	Survey Type	Habitat Quality	Suitable T&E Habitat?
TDH1SDYA004	9/15/2006	420.6	420.8	Yankton	SD	Drive By	High	Yes, Dakota skipper

Site Summary: This is a moderately grazed, high quality grassland site for the Dakota Skipper. It is adjacent to fairly large areas of native grassland. It has unplowed hillsides with a good mix of native plants, including black Sampson (*Echinacea angustifolia*), side-oats grama (*Bouteloua curtipendula*) and blue gram (*Bouteloua gracilis*).








Feature TDH1SDYA004: High quality hillside grassland. View to the north.

CONFIDENTIAL



Legend

-  Mileposts
-  Proposed Centerline
-  Surveyed Grasslands
-  State Boundary
-  County Boundary

Keystone Pipeline Project



0 1,000 2,000
Feet

Map 19 of 21
Surveyed
Grasslands