

CONFIDENTIAL

Feature ID	Survey Date	Start MP	End MP	County	State	Survey Type	Habitat Quality	Suitable T&E Habitat?
TDH1SDMI002	9/16/2006	358.5	359.9	Miner	SD	Drive By	Low	No

Site Summary: A pasture of introduced grasses that has blue grass (*Poa* spp.) and smooth brome (*Bromus inermis*) as dominants and crested wheatgrass (*Agropyron cristatum*) in spots. Wet areas have prairie cordgrass (*Spartina pectinata*), smartweed (*Polygonum*), and Indian hemp (*Apocynum cannabinum*).



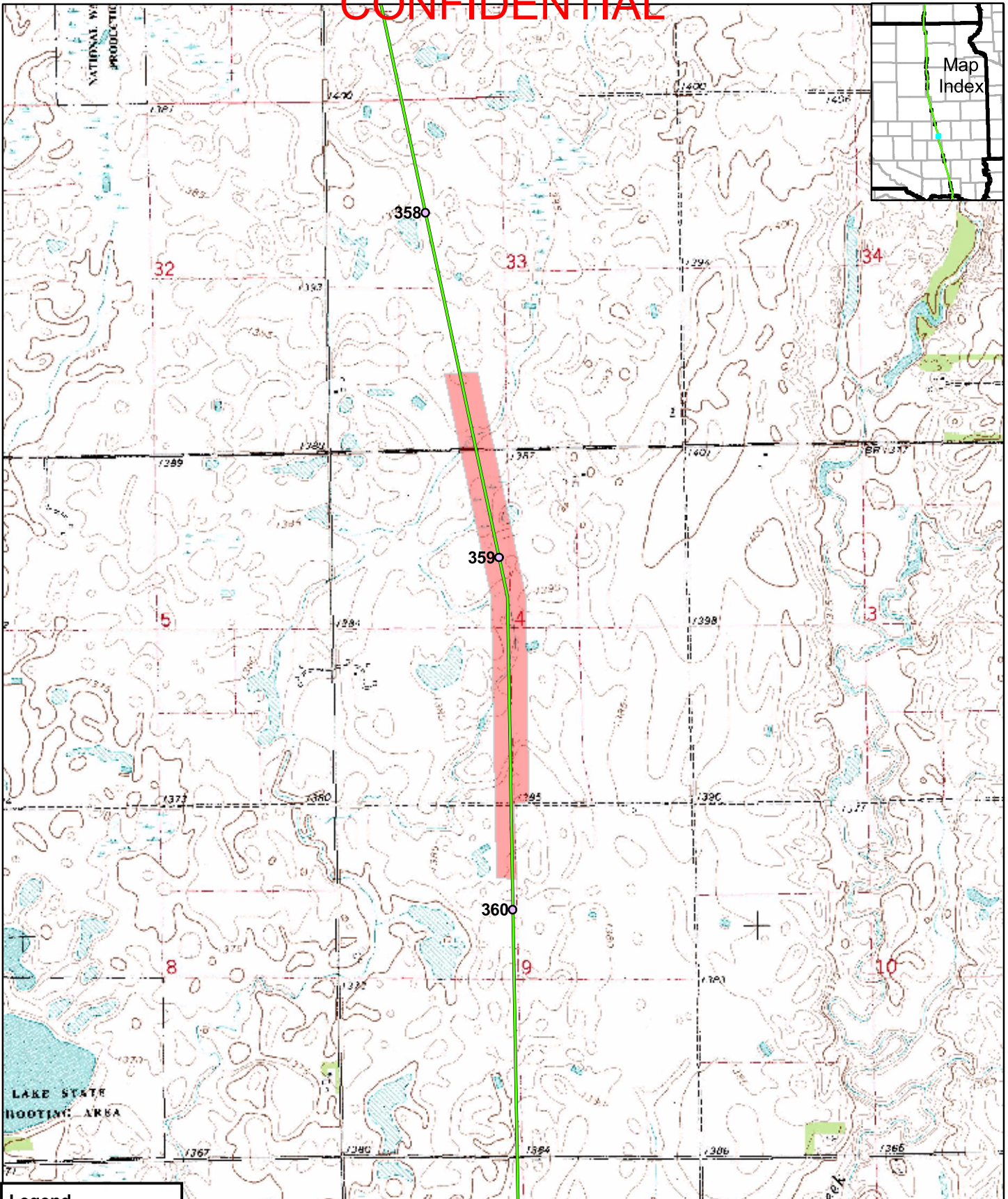
Feature TDH1SDMI002: Overview of pasture north from the road.

CONFIDENTIAL



Feature TDH1SDMI002: Overview of the pasture (wetland in foreground) south from the road.

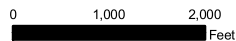
CONFIDENTIAL



Legend

- Mileposts
- Proposed Centerline
- Surveyed Grasslands
- ▭ State Boundary
- ▭ County Boundary

Keystone Pipeline Project



Map 16 of 21
Surveyed
Grasslands

CONFIDENTIAL

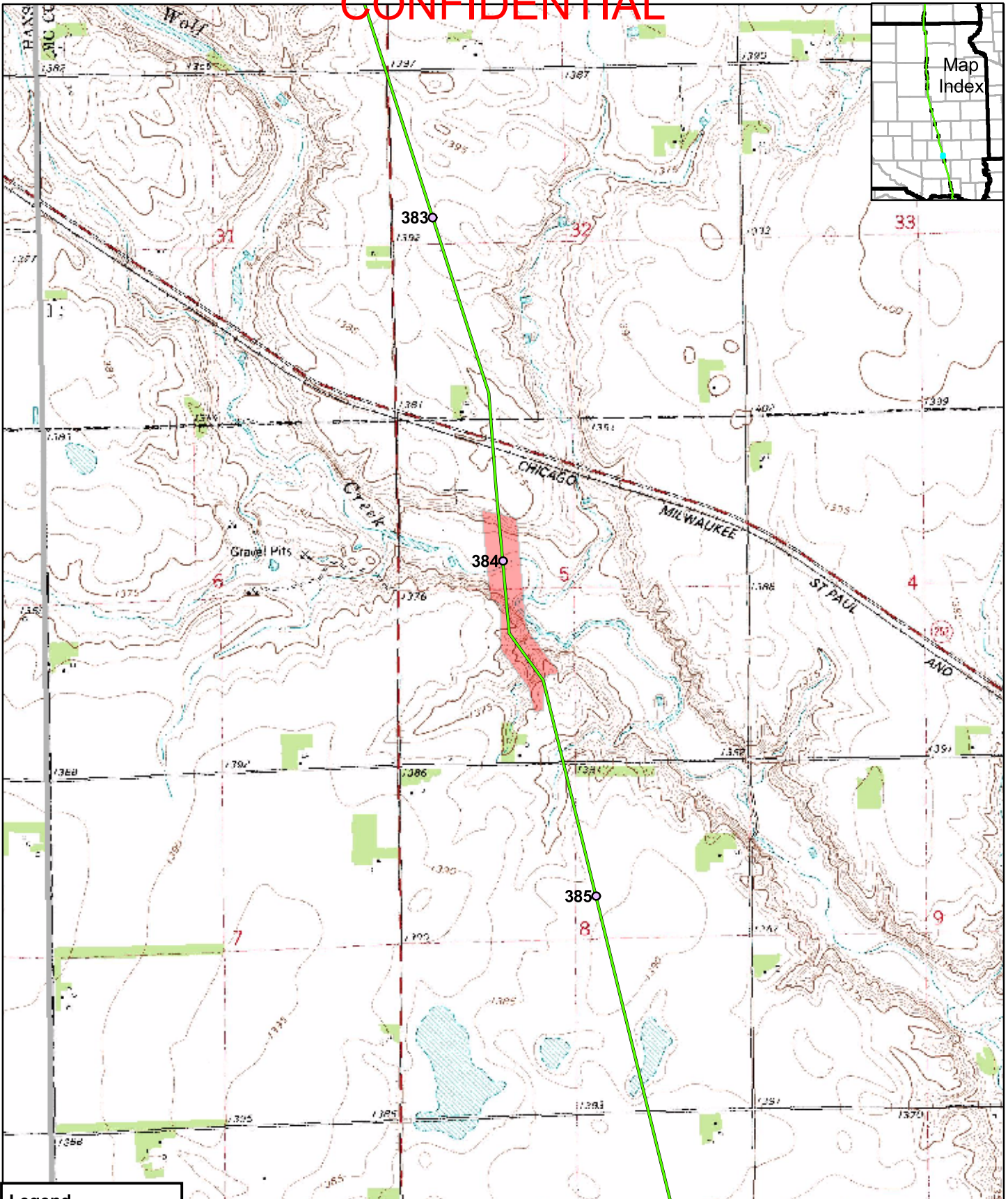
Feature ID	Survey Date	Start MP	End MP	County	State	Survey Type	Habitat Quality	Suitable T&E Habitat?
TDH1SDMC001	9/16/2006	383.9	384.5	McCook	SD	Drive By	Medium – High	Yes, prairie fringed orchid

Site Summary: A pasture of introduced grasses that has smooth brome (*Bromus inermis*) as the dominant in low spots and cattails (*Typha*) in wet spots. Native grasses such as blue grass (*Bouteloua gracilis*) and prairie dropseed (*Sporobolus heterolepis*) on hillsides. Due to these higher quality grassland slopes it is medium to high quality grassland with possible orchid habitat.



Feature TDH1SDMC001: Overview of area with creek in the distance.

CONFIDENTIAL




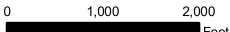
Legend

- Mileposts
- Proposed Centerline
- Surveyed Grasslands
- State Boundary
- County Boundary

Keystone Pipeline Project



TransCanada
In business to deliver

Map 17 of 21
Surveyed
Grasslands

CONFIDENTIAL

Feature ID	Survey Date	Start MP	End MP	County	State	Survey Type	Habitat Quality	Suitable T&E Habitat?
TDH1SDHU001	9/16/2006	389.7	390.6	Hutchinson	SD	Drive By	Low	No

Site Summary: A pasture of introduced grasses that has blue grass (*Poa* spp.) and smooth brome (*Bromus inermis*) as dominants and crested wheatgrass (*Agropyron cristatum*) in spots. Wet areas have prairie cordgrass (*Spartina pectinata*). Site also contained smartweed (*Polygonum spp.*), and Indian hemp (*Apocynum cannabinum*).



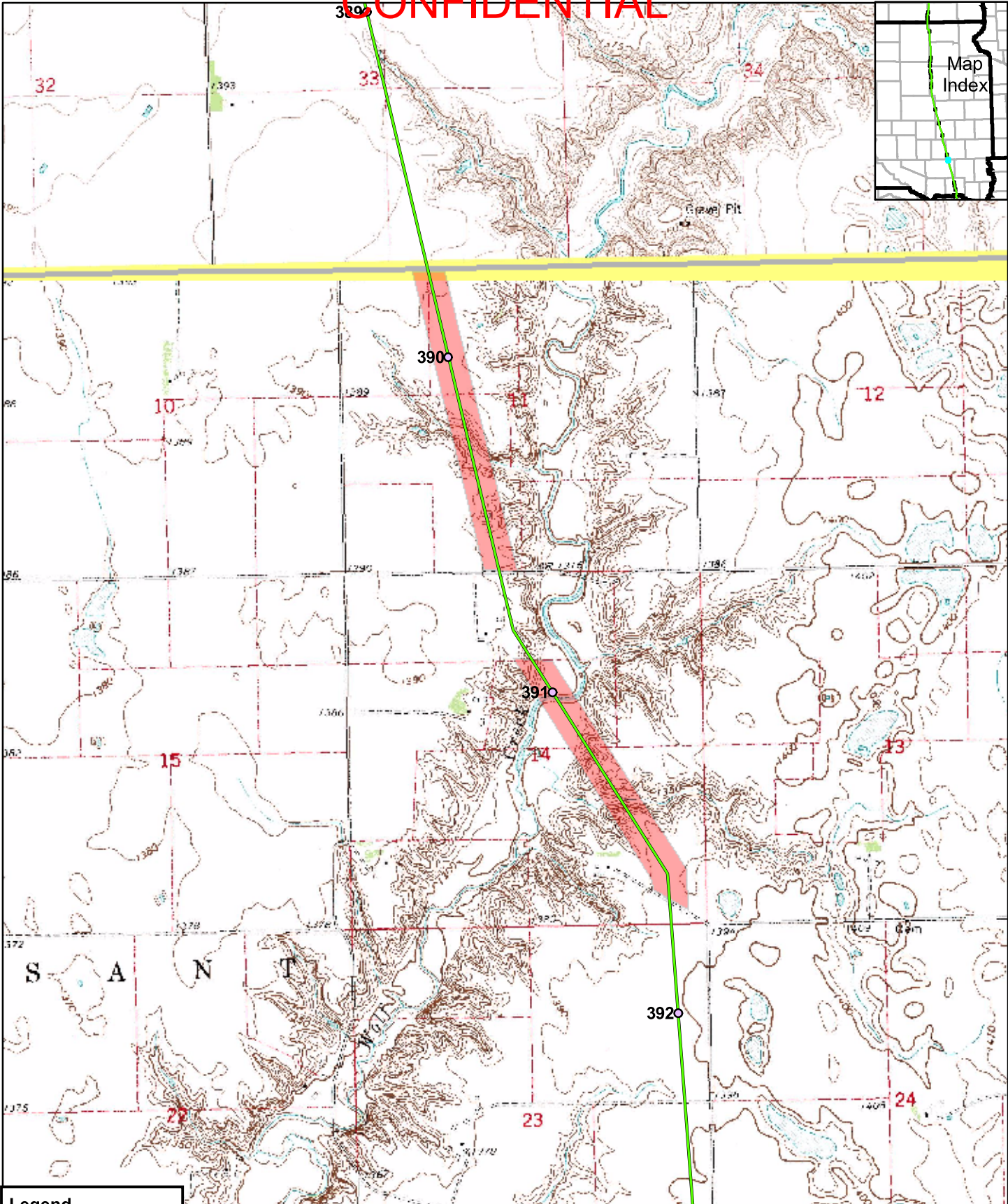
TDH1SDHU001. Overview of pasture.

CONFIDENTIAL



Feature TDH1SDHU001. Close-up of a dense stand of smooth brome (*Bromus inermis*).

CONFIDENTIAL




Legend

- Mileposts
- Proposed Centerline
- Surveyed Grasslands
- State Boundary
- County Boundary

Keystone Pipeline Project



TransCanada
In business to deliver



0 1,000 2,000
Feet

Map 18 of 21
Surveyed
Grasslands

CONFIDENTIAL

Feature ID	Survey Date	Start MP	End MP	County	State	Survey Type	Habitat Quality	Suitable T&E Habitat?
TDH1SDHU002	9/16/2006	390.9	391.7	Hutchinson	SD	Site Visit	High	Yes, Dakota skipper, prairie fringed orchid

Site Summary. This site is along Wolf Creek. Near the creek, in the ox-bow floodplain is sand dropseed (*Sporobolus* sp.) and prairie cordgrass (*Spartina pectinata*). On the hills are very high quality Dakota skipper habitat with little blue stem (*Schizachyrium scoparium*), black Sampson (*Echinacea angustifolia*), leadplant (*Amorpha canescens*), etc. Other native plants that occur at this site that were not seen elsewhere in South Dakota during the survey were hairy grama (*Bouteloua hirsuta*) and milkwort (*Polygala alba*). Both north and south of Wolf Creek, the hills contain native plants, but as the terrain levels brome grass (*Bromus inermis*) becomes more common. Note the photograph of this area with grazed pasture to the north and a lesser grazed pasture to the south of a fence.



Feature TDH1SDHU002: Overview of high quality grassland around Wolf Creek (in background)

CONFIDENTIAL



Feature TDH1SDHU002: Native hillside with little blue stem (*Schizachyrium scoparium*) and blazing star (*Liatris* sp.)



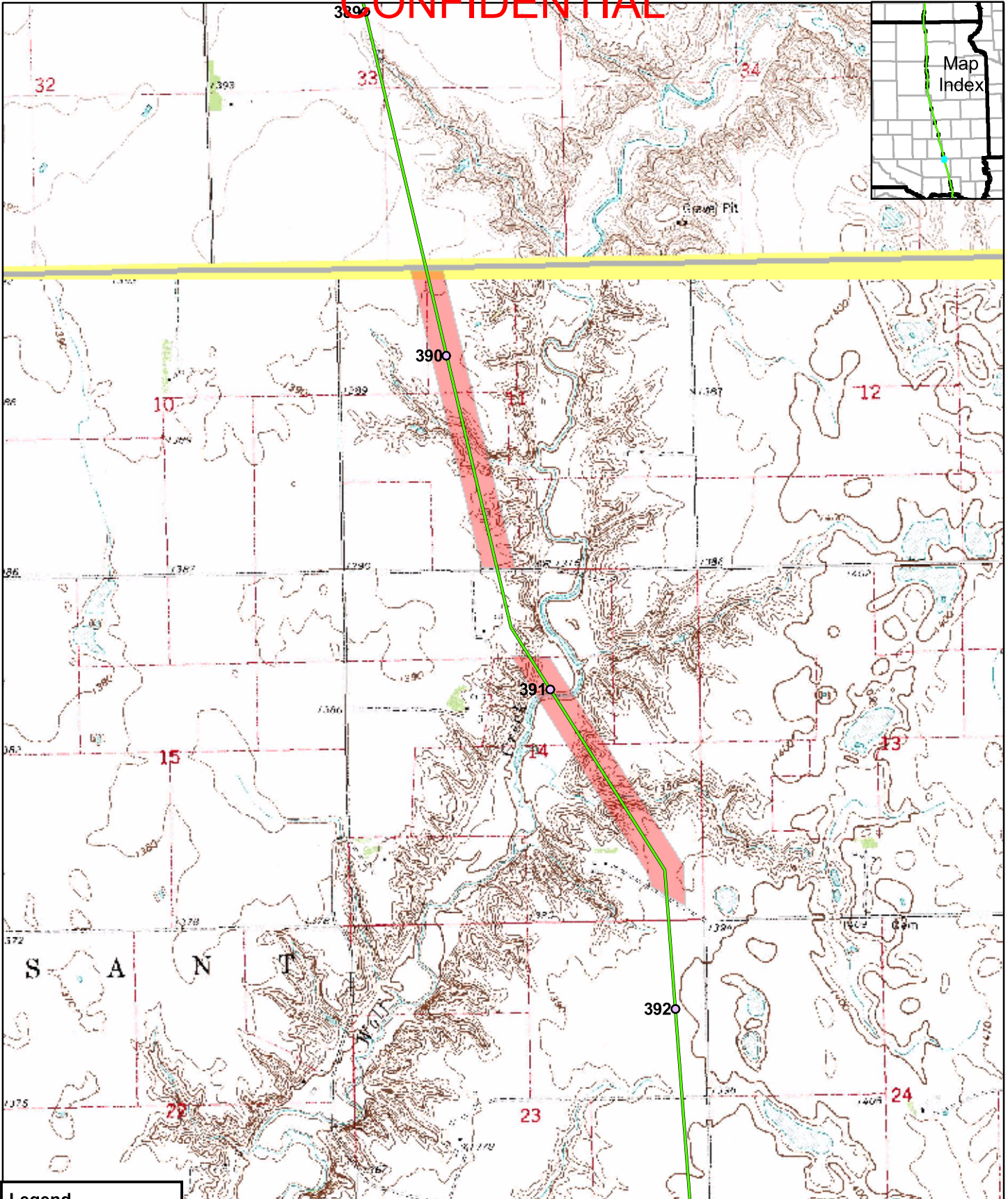
Feature TDH1SDHU002: Little blue stem (*Schizachyrium scoparium*), blazing star (*Liatris* sp.) and Black Sampson (*Echinacea angustifolia*).

CONFIDENTIAL








Feature TDH1SDHU002: Effects of grazing on prairie habitat. Note the difference between the moderately grazed pasture to the left, and the nearly ungrazed pasture to the right.

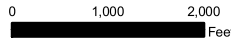
CONFIDENTIAL



Legend

-  Mileposts
-  Proposed Centerline
-  Surveyed Grasslands
-  State Boundary
-  County Boundary

Keystone Pipeline Project



Map 18 of 21
 Surveyed
 Grasslands

CONFIDENTIAL

Feature ID	Survey Date	Start MP	End MP	County	State	Survey Type	Habitat Quality	Suitable T&E Habitat?
TDH1SDYA006	9/15/2006	418.7	419.2	Yankton	SD	Site Visit	Medium	No

Site Summary: This is a smooth brome (*Bromus inermis*) and blue grass (*Poa cf. pratensis*) dominated pasture with wet swale areas and upland ridges. Cedar trees (*Juniperus scopulorum*) are common in the ravines. Also common in the more mesic areas are three exotic plants: plumeless thistle (*Carduus acanthoides*), horseweed (*Conyza canadensis*), and yellow sweet clover (*Melilotus officinalis*). However, there are patches of native grassland present on the upland ridges.



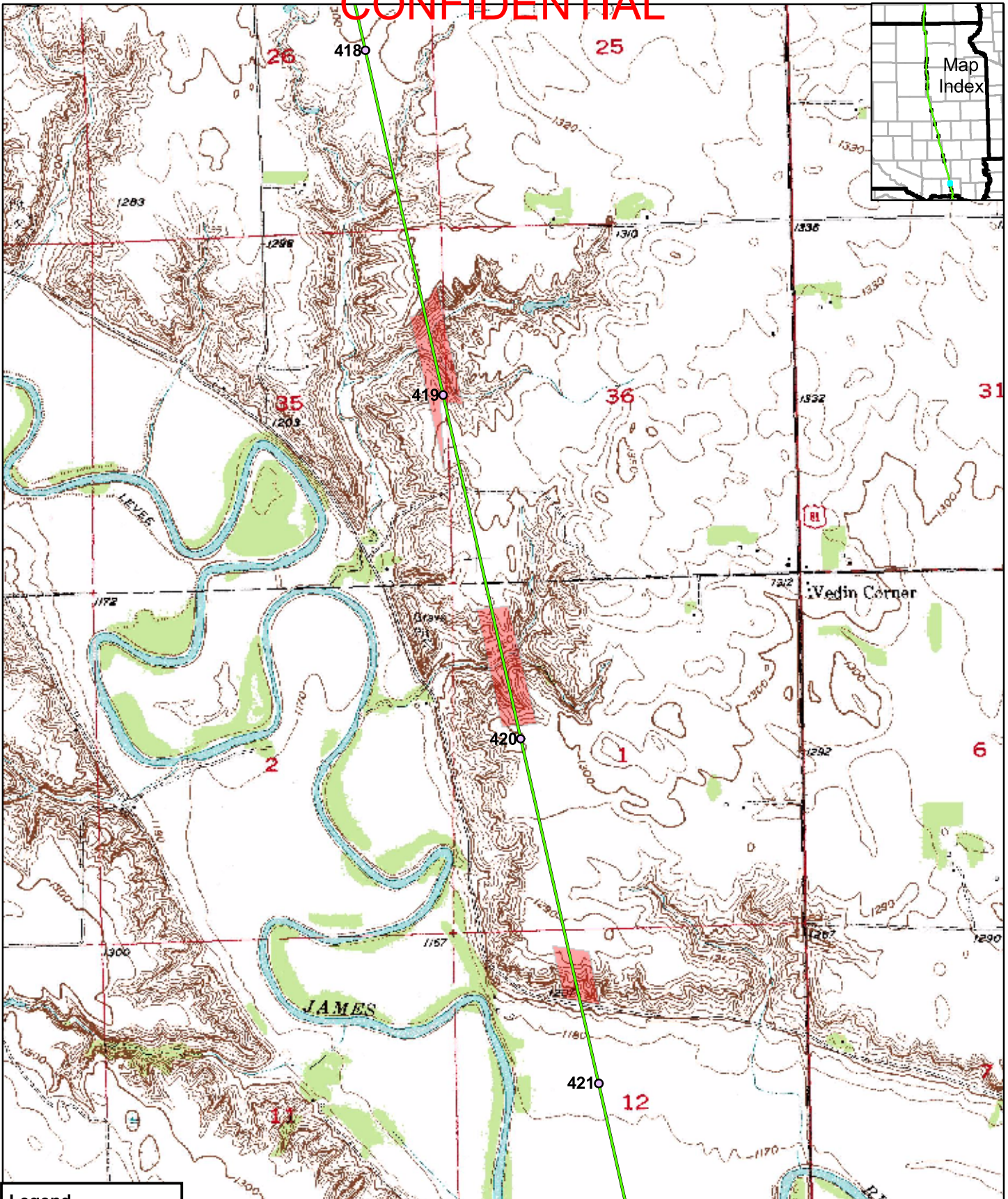
Feature TDH1SDYA006: Overview of site to the north. In the foreground is a plumeless thistle (*Carduus acanthoides*).

CONFIDENTIAL



Feature TDH1SDYA006: A smooth brome (*Bromus inermis*) dominated pasture area.

CONFIDENTIAL



Legend

- Mileposts
- Proposed Centerline
- Surveyed Grasslands
- State Boundary
- County Boundary

Keystone Pipeline Project

TransCanada
In business to deliver

0 1,000 2,000
Feet

Map 19 of 21
Surveyed
Grasslands