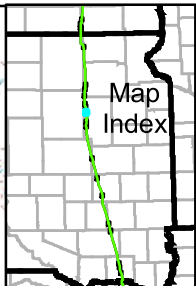
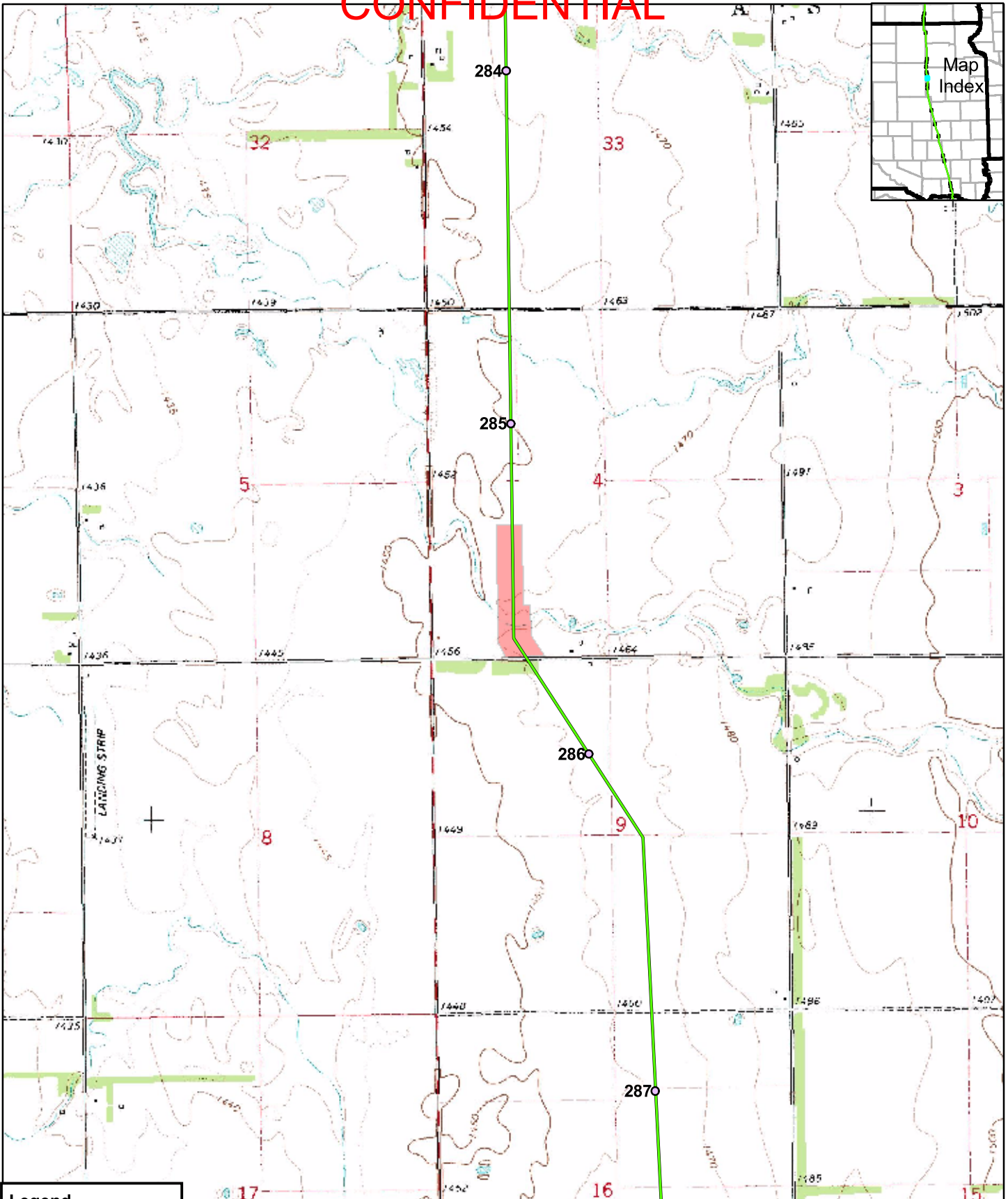


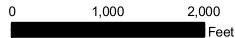
CONFIDENTIAL



Legend

- Mileposts
- Proposed Centerline
- Surveyed Grasslands
- State Boundary
- County Boundary

Keystone Pipeline Project



Map 11 of 21
Surveyed
Grasslands

CONFIDENTIAL

Feature ID	Survey Date	Start MP	End MP	County	State	Survey Type	Habitat Quality	Suitable T&E Habitat?
TDH1SDCL002	9/11/2006	293.7	294.1	Clark	SD	Drive By	Low	No

Site Summary: This is a heavily grazed wetland/upland inclusion area where ironweed (*Vernonia* spp.) and cocklebur (*Xanthium canadense*) are common. There are a few peach-leaf willows (*Salix amygdaloides*) and wormwood (*Artemisia absinthium*) is common in the floodplain pasture.



Feature TDH1SDCL002: The tree is a peach-leaf willow (*Salix amygdaloides*) that is near center line.

CONFIDENTIAL

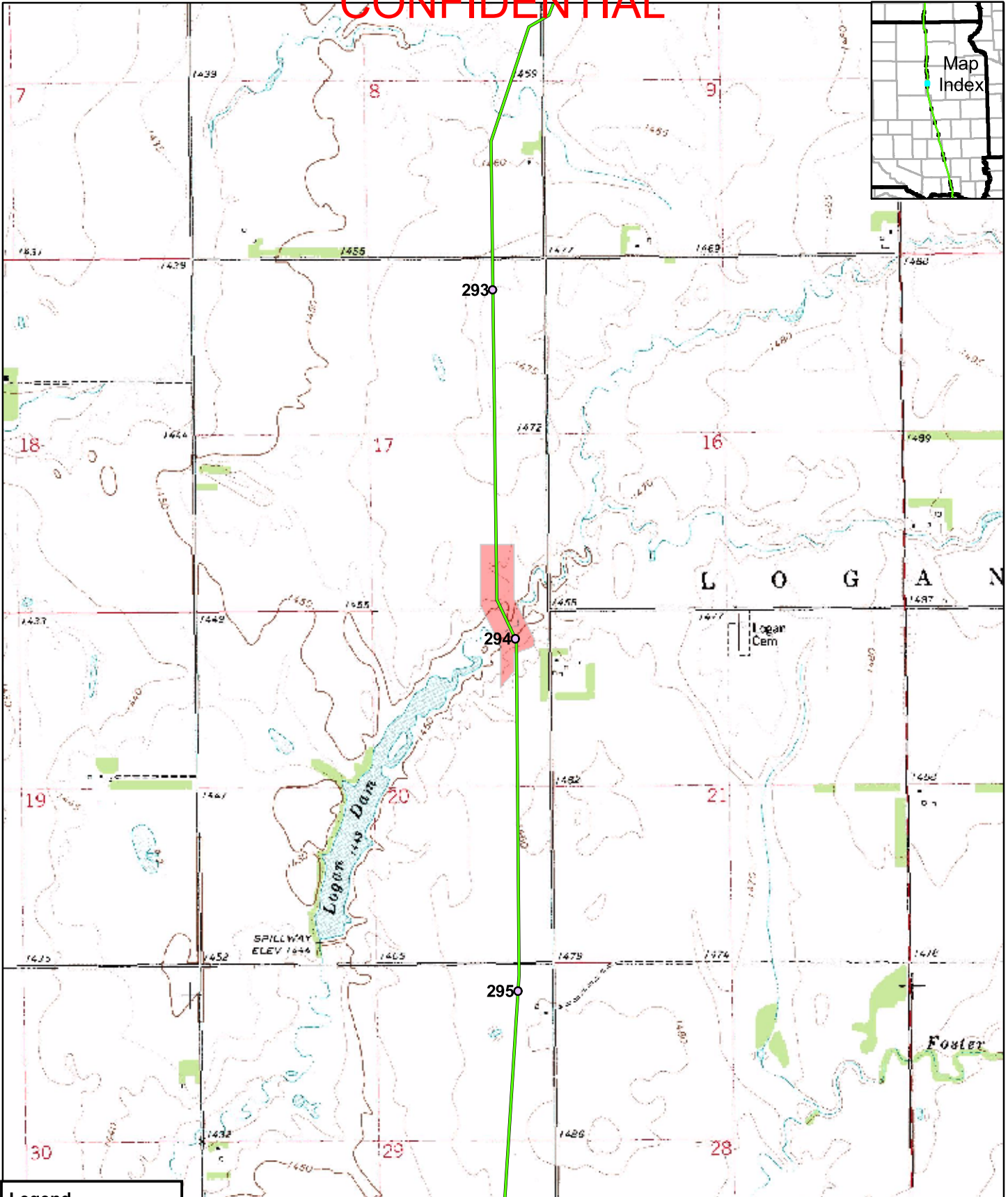
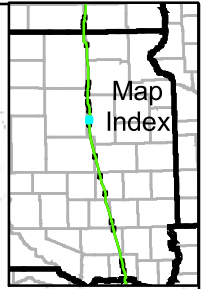


Feature TDH1SDCL002: Just east of the corridor by the road the same stream that also crosses center line has an abundance of Canadian thistle (*Cirsium arvense*).



Feature TDH1SDCL002: Wormwood (*Artemisia absinthium*) in smooth brome (*Bromus inermis*) pasture

CONFIDENTIAL



Legend

- Mileposts
- Proposed Centerline
- Surveyed Grasslands
- State Boundary
- County Boundary

Keystone Pipeline Project

TransCanada
In business to deliver

0 1,000 2,000
Feet

Map 12 of 21
Surveyed
Grasslands

CONFIDENTIAL

Feature ID	Survey Date	Start MP	End MP	County	State	Survey Type	Habitat Quality	Suitable T&E Habitat?
TDH1SDCL001	9/11/2006	296.9	297.9	Clark	SD	Site Visit	Medium	Yes, Dakota skipper

Site Summary: This is a medium quality grassland. It has a stream with rolling hills with native grasses present to the west of the stream. There are pasture grasses such as crested wheat (*Agropyron cristatum*), but there are also large areas with native grasses such as blue grama (*Bouteloua gracilis*) and little blue stem (*Schizachyrium scoparium*). There are also native forbs, including pollen plants for the Dakota skipper butterfly.



Feature TDH1SDCL001: Overview of site.

CONFIDENTIAL



Feature TDH1SDCL001: Over view of this area looking south from the road.



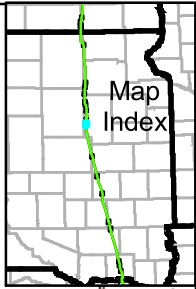
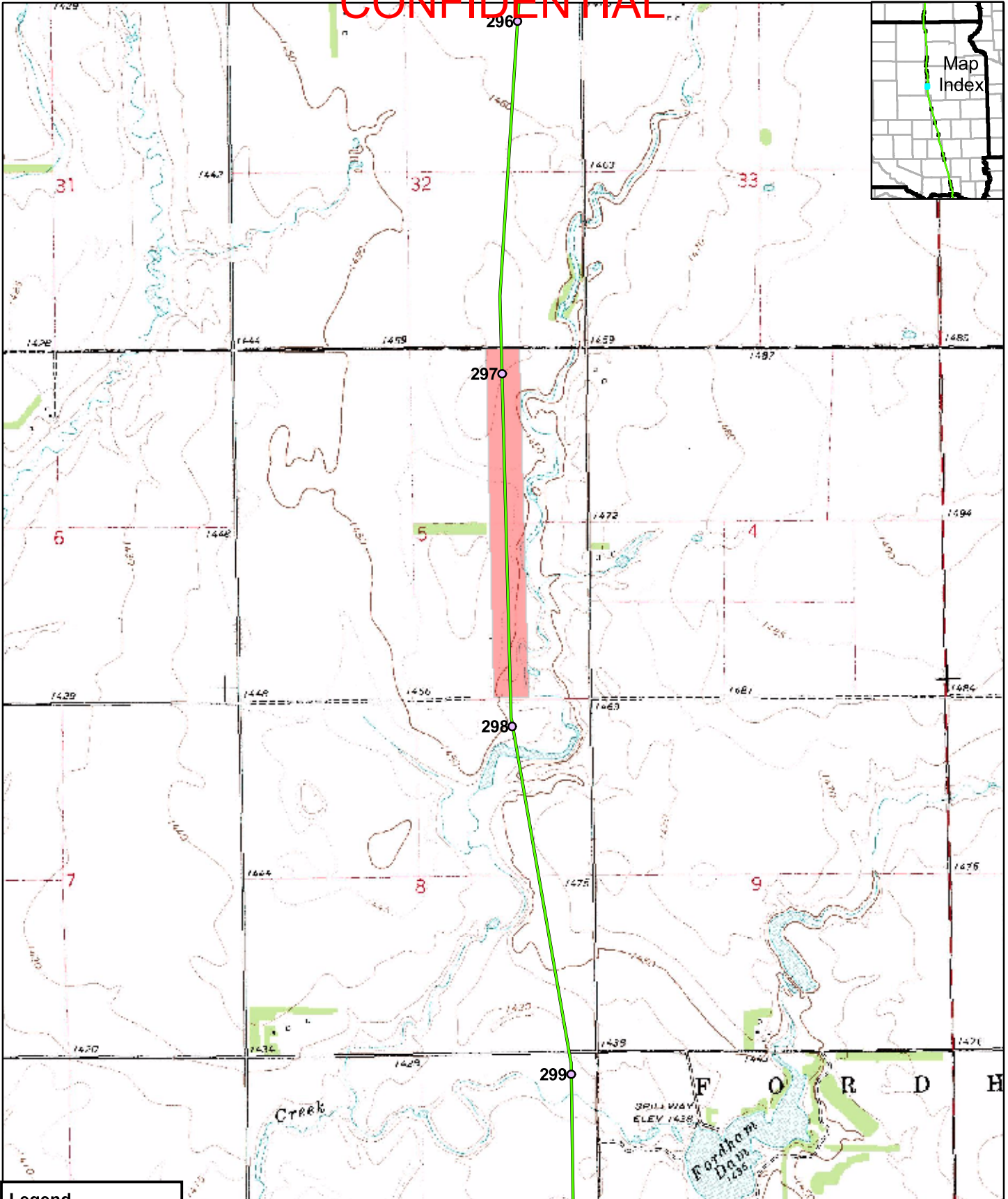
Feature TDH1SDCL001: Hillside with an abundance of goldenrod (*Solidago* spp.).

CONFIDENTIAL



Feature TDH1SDCL001: Yellow flowers of gumweed (*Grindelia squarosa*) and spikes of hoary vervain (*Verbena stricta*).

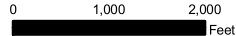
CONFIDENTIAL



Legend

- Mileposts
- Proposed Centerline
- Surveyed Grasslands
- State Boundary
- County Boundary

Keystone Pipeline Project



Map 13 of 21
 Surveyed
 Grasslands

CONFIDENTIAL

Feature ID	Survey Date	Start MP	End MP	County	State	Survey Type	Habitat Quality	Suitable T&E Habitat?
TDH1SDKI001	9/16/2006	325.1	326.4	Kingsbury	SD	Drive By	High/North Medium/South	No

Site Summary: A road dissects a high quality grassland to the north and a medium quality grassland to the south. This is a good example of the impact that grazing can have in terms of allowing exotic plants to invade and to become more common in grazed areas. This is the only area where the noxious leafy spurge (*Euphorbia esula*) was seen. The high quality pasture includes large, flowering stands of blue grama (*Bouteloua gracilis*) and patches of little blue stem (*Schizachyrium scoparium*). Since there was no adjacent prairie, and essentially no pollen plants, this site was not considered to be Dakota skipper habitat.



Feature TDH1SDKI001: High quality prairie to the north of the road.

CONFIDENTIAL



Feature TDH1SDKI001: A large stand of flowering blue grama (*Bouteloua gracilis*) north of road.



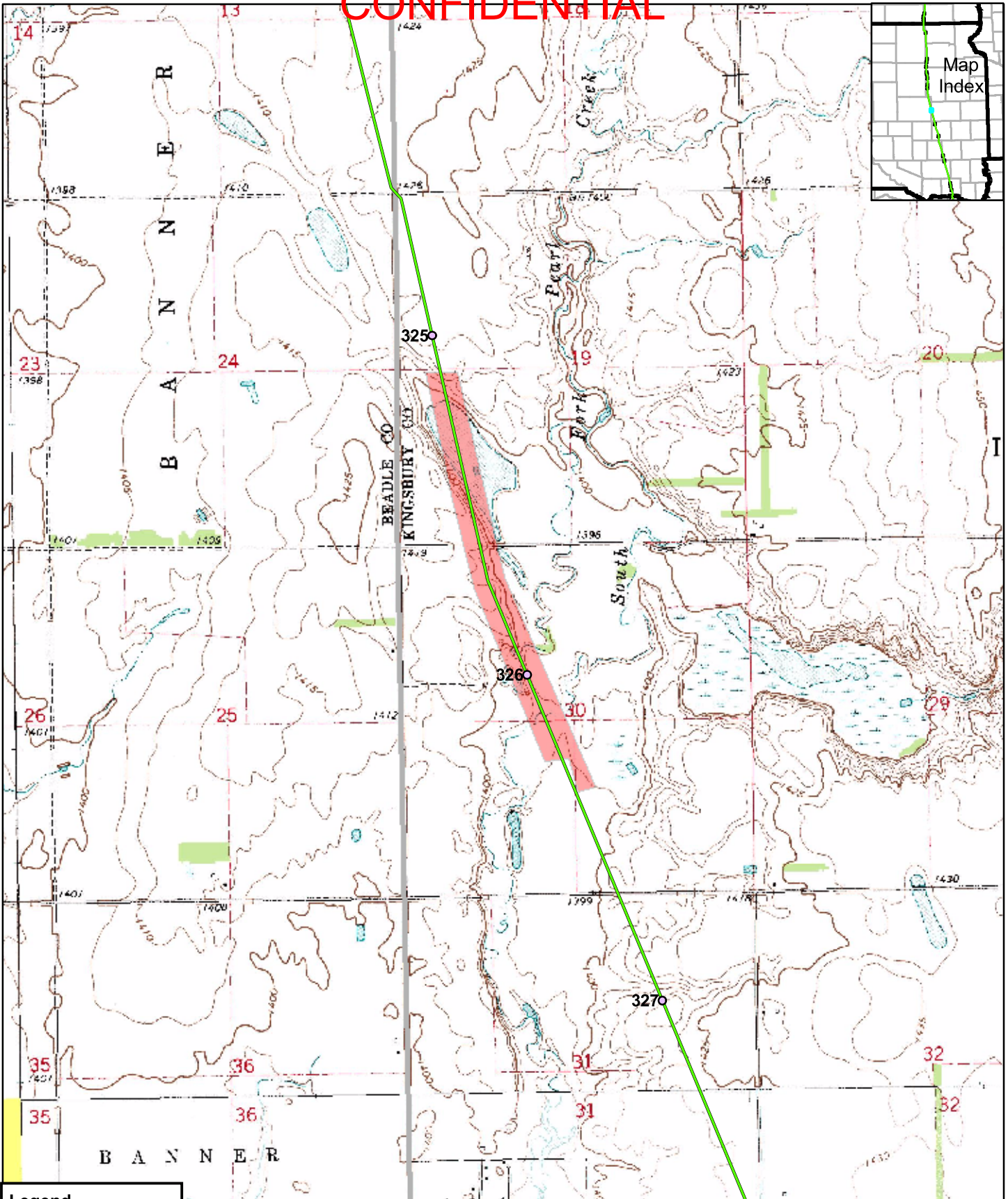
Feature TDH1SDKI001. Medium quality, heavily grazed grassland south of road.

CONFIDENTIAL



Feature TDH1SDKI001: Leafy spurge (*Euphorbia esula*) in heavily grazed pasture south of road.

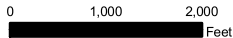
CONFIDENTIAL



Legend

- Mileposts
- Proposed Centerline
- Surveyed Grasslands
- State Boundary
- County Boundary

Keystone Pipeline Project



Map 14 of 21
 Surveyed
 Grasslands

CONFIDENTIAL

Feature ID	Survey Date	Start MP	End MP	County	State	Survey Type	Habitat Quality	Suitable T&E Habitat?
TDH1SDMI001	9/16/2006	342.9	344.0	Miner	SD	Drive By	Low	No

Site Summary: A pasture of introduced grasses that has nearly all smooth brome (*Bromus inermis*) and some crested wheatgrass (*Agropyron cristatum*). There are cattails (*Typha*) in the wetland spots and blue grama (*Bouteloua gracilis*) on the few upland areas.



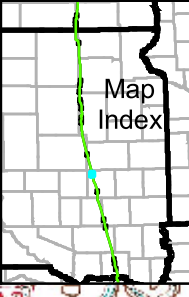
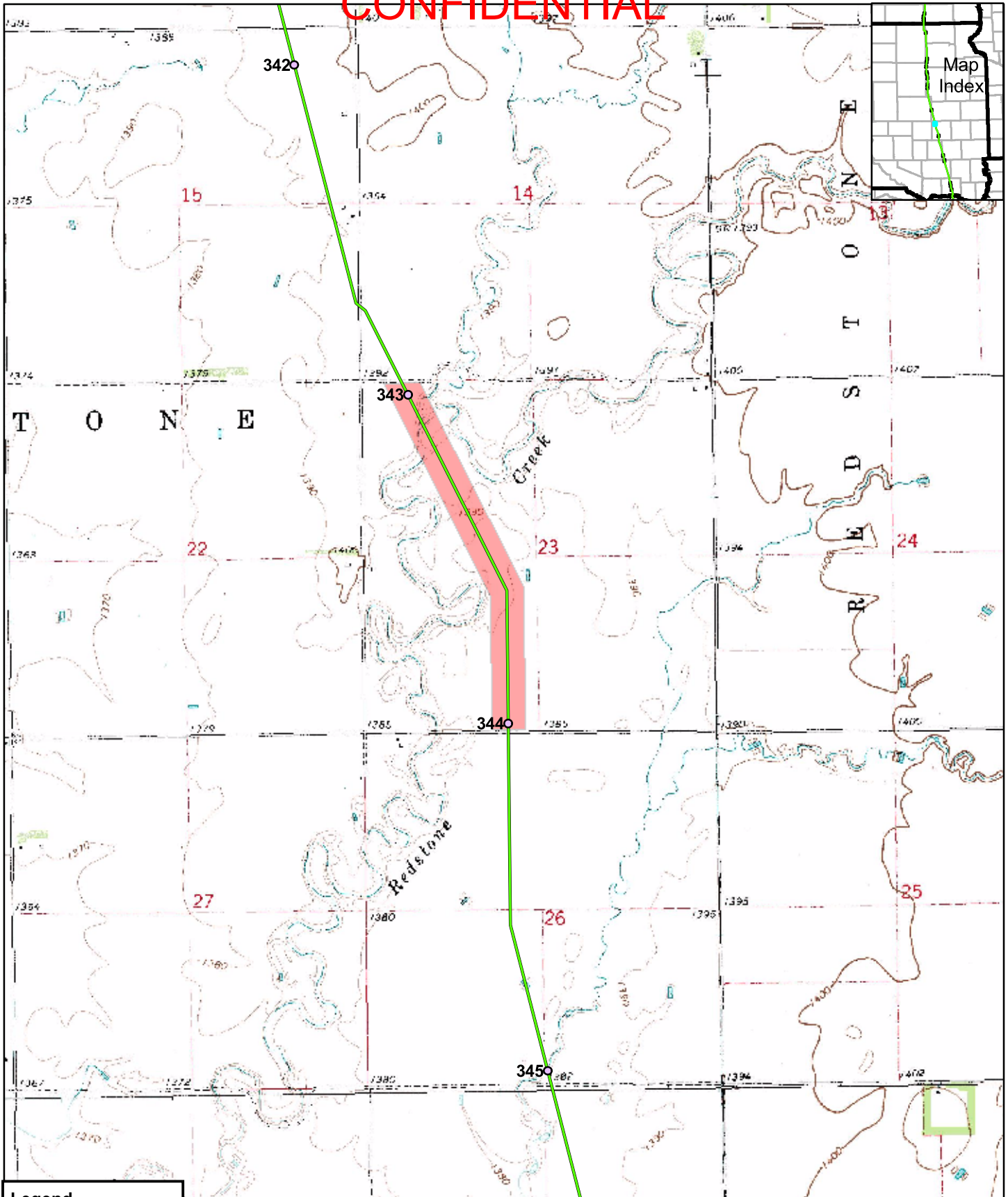
Feature TDH1SDMI001: Overview of this site to the North from the road.

CONFIDENTIAL



Feature TDH1SDMI001: Overview of the site south from the road.

CONFIDENTIAL



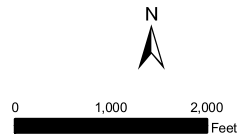
Legend

- Mileposts
- Proposed Centerline
- Surveyed Grasslands
- State Boundary
- County Boundary

Keystone Pipeline Project



TransCanada
In business to deliver



Map 15 of 21
Surveyed
Grasslands