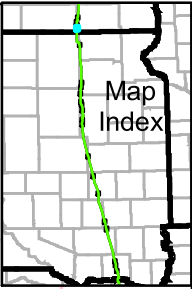
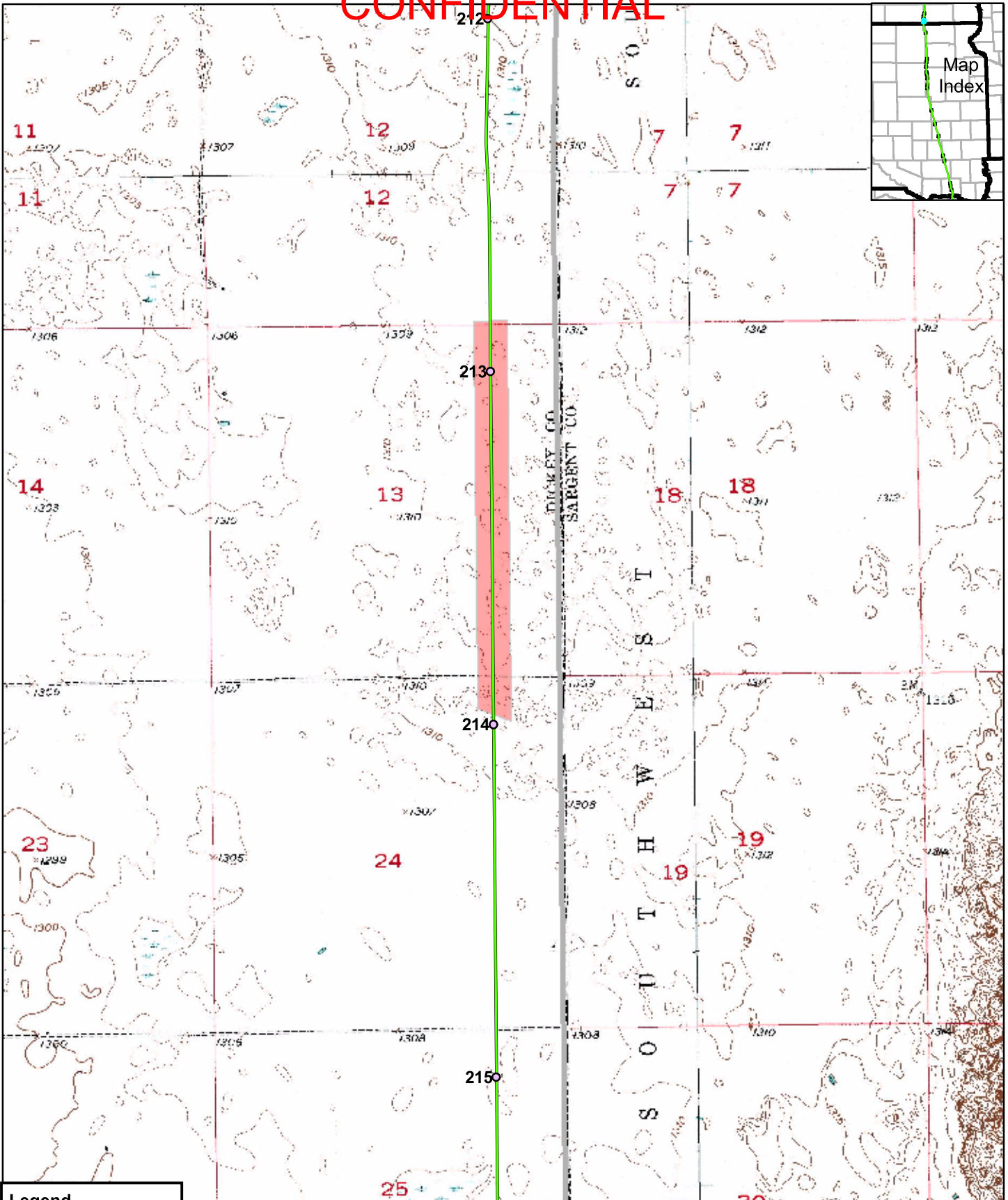


CONFIDENTIAL



Feature TDH1NDDI001: Large wetland with several wooden hunting towers (blinds) near the center.

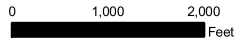
CONFIDENTIAL



Legend

- Mileposts
- Proposed Centerline
- Surveyed Grasslands
- State Boundary
- County Boundary

Keystone Pipeline Project



Map 4 of 21
Surveyed
Grasslands

CONFIDENTIAL

Feature ID	Survey Date	Start MP	End MP	County	State	Survey Type	Habitat Quality	Suitable T&E Habitat?
TDH1SDMA001	9/13/2006	228.5	228.9	Marshall	SD	Site Visit	None	No

Site Summary: This area appeared as grassland on the aerial photographs. However, it is dominated by reed canary grass (*Phalaris arundinacea*) and a strip of common reed grass (*Phragmites australis*) along the ditch to the north. This is a game production area (note the sign in the third photograph) with patches of smooth brome (*Bromus inermis*). This is a high quality wetland site with minimal grazing, but no grassland inclusions were seen.



Feature TDH1SDMA001: Southern exposure along center line of this large wetland, dominated by reed canary grass (*Phalaris arundinacea*) and common reed grass (*Phragmites australis*).

CONFIDENTIAL

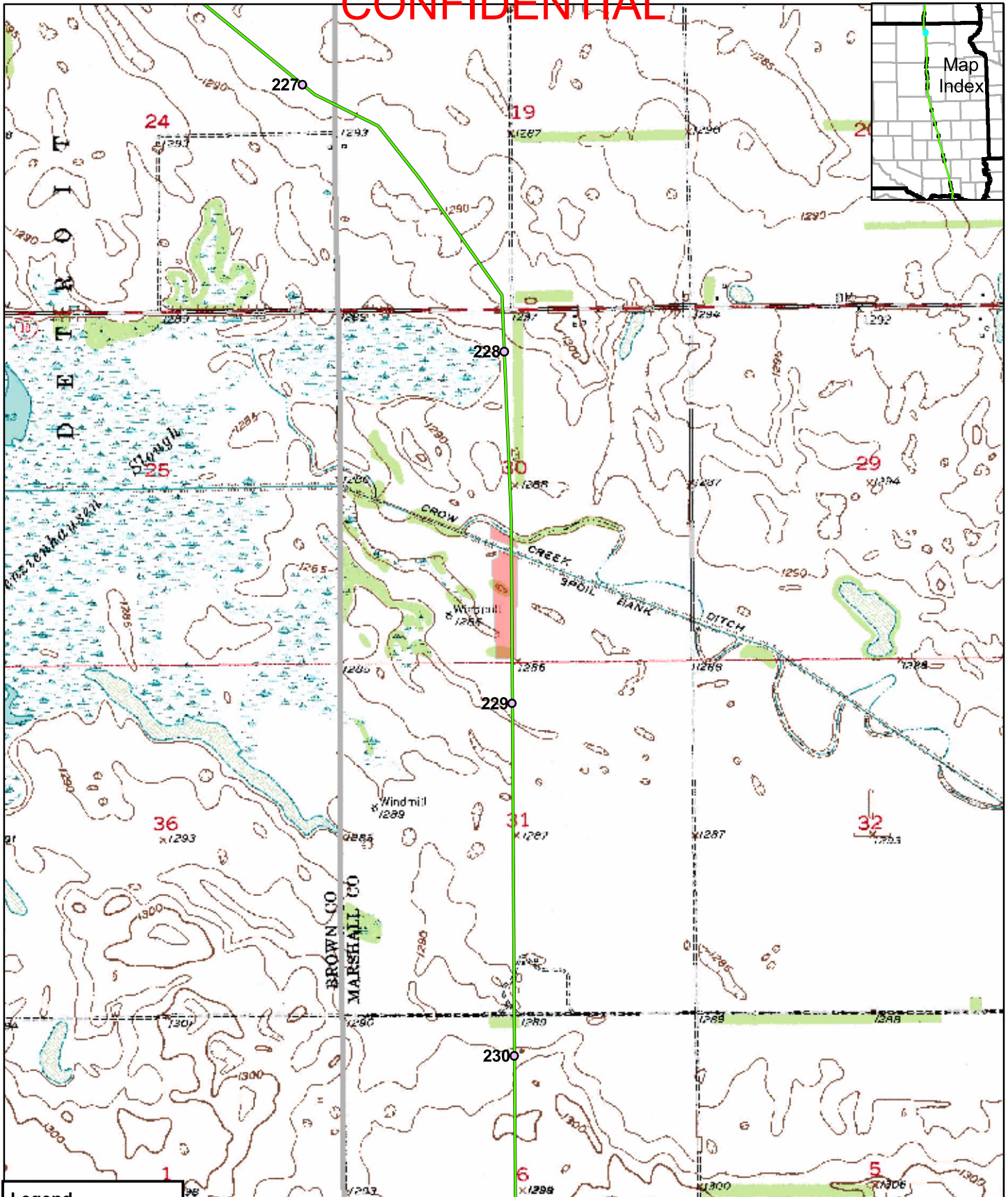


Feature TDH1SDMA001: View along center line that crosses this canal.



Feature TDH1SDMA001: Sign at the border of this large wetland that is on state land.

CONFIDENTIAL



Legend

- Mileposts
- Proposed Centerline
- Surveyed Grasslands
- State Boundary
- County Boundary

Keystone Pipeline Project

0 1,000 2,000
Feet

Map 5 of 21
Surveyed
Grasslands

CONFIDENTIAL

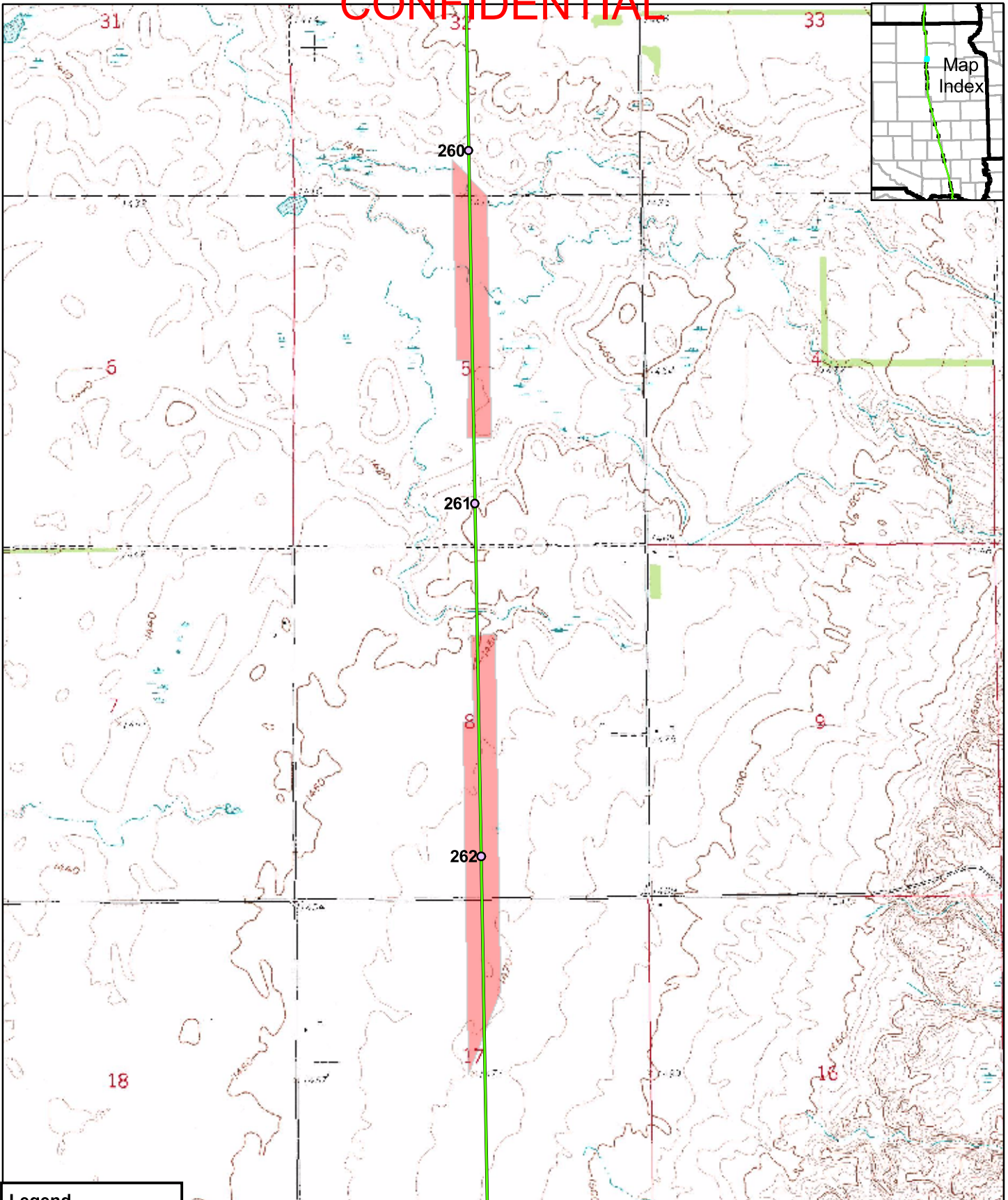
Feature ID	Survey Date	Start MP	End MP	County	State	Survey Type	Habitat Quality	Suitable T&E Habitat?
TDHISDDA005	9/11/2006	260.0	260.8	Day	SD	Drive By	Low	No

Site Summary: This site was seen only from a distance (drive-by), but appeared heavily grazed. It is a low quality grassland area.








Feature TDH1SDDA005: Overview of this heavily grazed pasture.

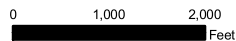
CONFIDENTIAL



Legend

-  Mileposts
-  Proposed Centerline
-  Surveyed Grasslands
-  State Boundary
-  County Boundary

Keystone Pipeline Project



Map 6 of 21
Surveyed
Grasslands

CONFIDENTIAL

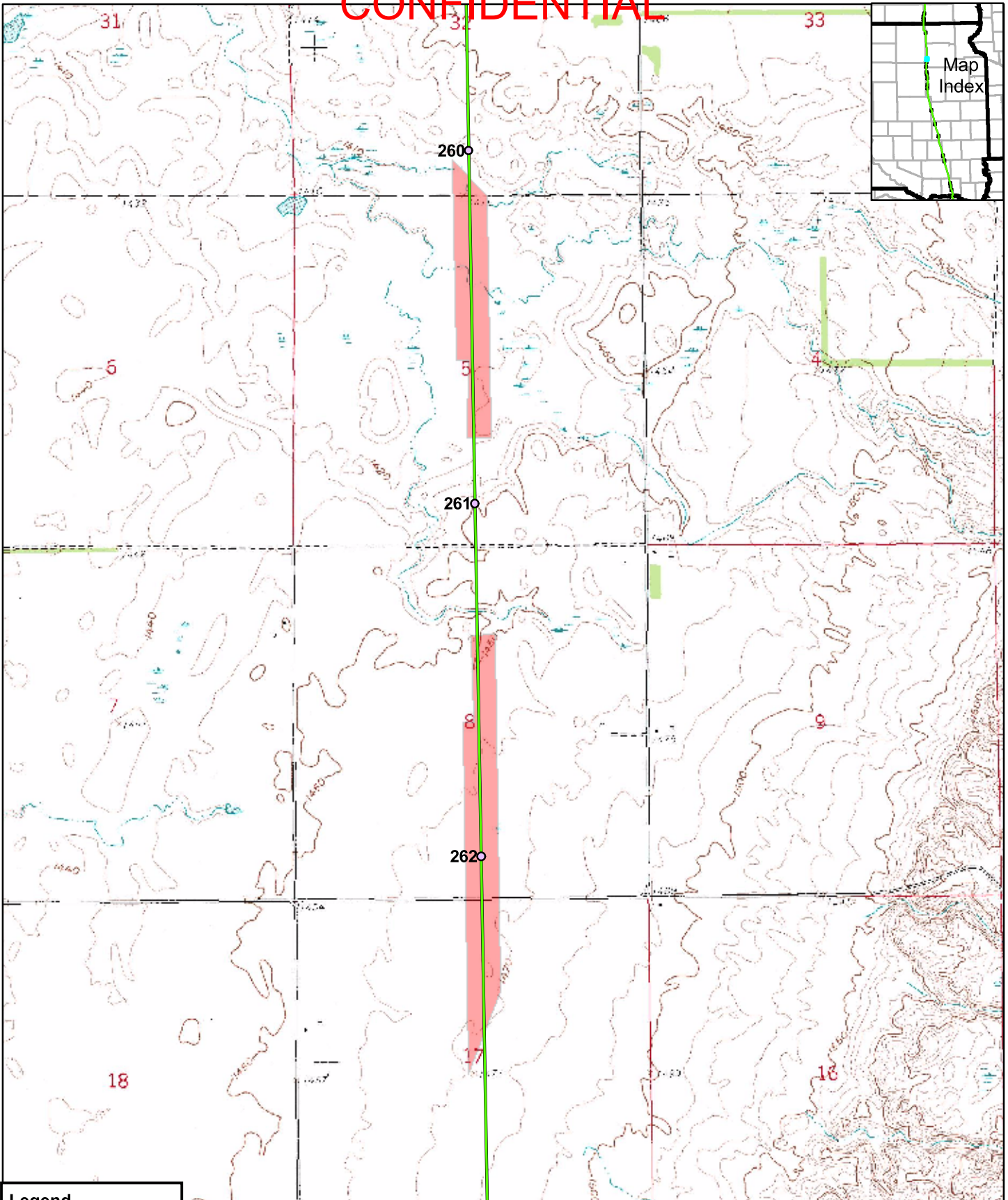
Feature ID	Survey Date	Start MP	End MP	County	State	Survey Type	Habitat Quality	Suitable T&E Habitat?
TDH1SDDA004	9/11/2006	261.4	262.6	Day	SD	Drive By	Low	No

Site Summary: A pasture dominated by introduced wheat grasses such as tall and intermediate wheat grass (*Agropyron spp.*) and perhaps other *Agropyron* species. There may be a few native grasses and forbs in spots, but the overall grassland quality is low.



Feature TDH1SDDA004: Pasture planted with wheatgrass (*Agropyron spp.*).

CONFIDENTIAL



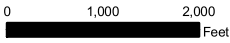
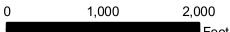
Legend

- Mileposts
- Proposed Centerline
- Surveyed Grasslands
- State Boundary
- County Boundary

Keystone Pipeline Project



TransCanada
In business to deliver



0 1,000 2,000
Feet

Map 6 of 21
Surveyed
Grasslands

CONFIDENTIAL

Feature ID	Survey Date	Start MP	End MP	County	State	Survey Type	Habitat Quality	Suitable T&E Habitat?
TDH1SDDA003	9/11/2006	264.5	264.8	Day	SD	Site Visit	Low	No

Site Summary: This is a heavily grazed hillside with an ox-bow by a stream. It is mostly all smooth brome (*Bromus inermis*), but it also has dense spots of Canadian thistle (*Cirsium arvense*) near the stream, patches of wormwood (*Artemisia absinthium*) on the hillsides, and wet spots with prairie cordgrass (*Spartina pectinata*). A few native forbs such as silver scurf pea (*Pediomelum argophyllum*) also occur, but the grassland quality is low.



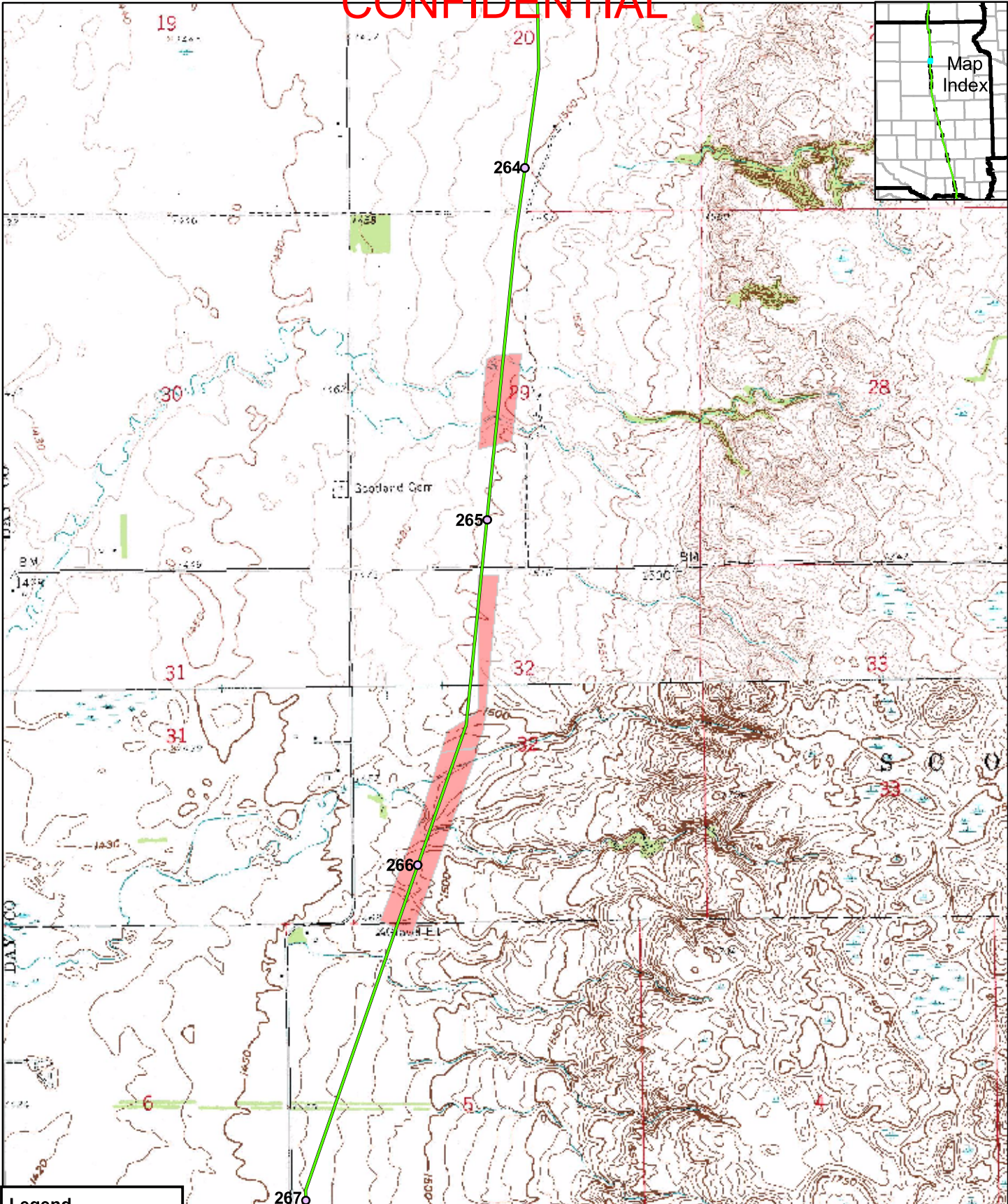
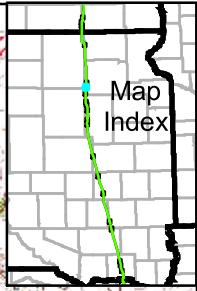
Feature TDH1SDDA003: Overview of large wetland located at site.

CONFIDENTIAL



Feature TDH1SDDA003: Close-up of prairie cordgrass (*Spartina pectinata*)

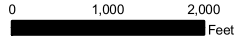
CONFIDENTIAL



Legend

- Mileposts
- Proposed Centerline
- Surveyed Grasslands
- State Boundary
- County Boundary

Keystone Pipeline Project



Map 7 of 21
Surveyed
Grasslands

CONFIDENTIAL

Feature ID	Survey Date	Start MP	End MP	County	State	Survey Type	Habitat Quality	Suitable T&E Habitat?
TDH1SDDA002	9/11/2006	265.2	266.2	Day	SD	Site Visit	High	Yes, Dakota skipper

Site Summary : This is high quality prairie area. The northern section is adjacent (toward the east) to a high quality, rolling hill prairie. To the west is a plowed field (photograph 1). In the middle section of this tract the corridor crosses a disturbed area of a farm. However, in the southern portion the center line actually crosses quality rolling hills with high quality prairie. The southern section of the site contained Dakota skipper pollen plants such as black Sampson (*Echinacea*) and leadplant (*Amorpha*). On the rocky slopes were side-oats grama (*Bouteloua curtipendula*), little blue stem (*Schicachyrium scoparium*), and big blue stem (*Andropogon gerardii*). This was the only site where the clonal variety of pincushion cactus (*Coryphantha vivipara*) was seen. Rerouting the pipeline a bit to the west to avoid this high quality prairie should be considered.



Feature TDH1SDDA002: Agricultural field in background.

CONFIDENTIAL



Feature TDH1SDDA002: Hills with red-brown little blue stem (*Schizachyrium scoparium*)



Feature TDH1SDDA002: A close-up of leadplant (*Amorpha canescens*)

CONFIDENTIAL



Feature TDH1SDDA002: Close-up of Big Blue Stem (*Andropogon gerardii*)