

CONFIDENTIAL

Feature ID	Survey Date	Start MP	End MP	County	State	Survey Type	Habitat Quality	Suitable T&E Habitat?
TDH1SDCL005	9/13/2006	277.2	277.9	Clark	SD	Drive By	Medium	Yes, prairie fringed orchid

Site Summary: This is an area with exotic pasture grasses, such as crested wheat grass (*Agropyron cristatum*), and with exotic forage legumes such as alfalfa (*Medicago sativa*), yellow sweet clover (*Melilotus officinalis*), and clover (*Trifolium*). There are upland spots with native plants that include hoary vervain (*Verbena stricta*), prairie cone flower (*Ratibida columnifera*), and silver scurf pea (*Pediomelum argophyllum*). This is potential prairie fringed orchid habitat.



Feature TDH1SDCL005: Close-up of wetland vegetation that is potential prairie orchid habitat.



Feature TDH1SDCL005: Overview of pasture area included on site.



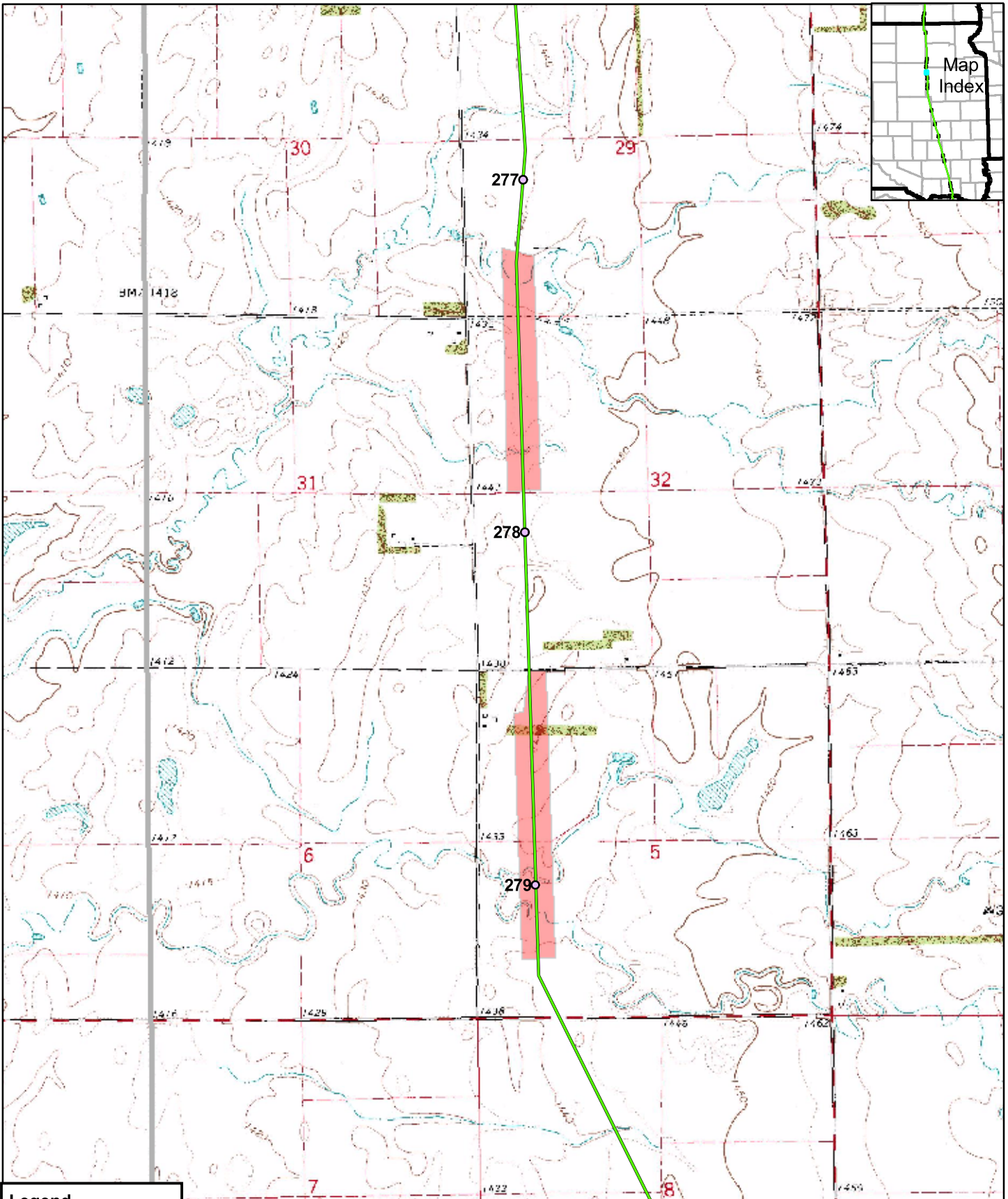
Feature TDH1SDCL005: Prairie cone flower (*Ratibida columnifera*)



Feature TDH1SDCL005: Butterfly on a white frost flower (*Aster falcatus*)



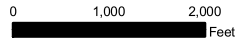
Feature TDH1SDCL005: Bird nest in wetland vegetation.



Legend

- Mileposts
- Proposed Centerline
- Surveyed Grasslands
- State Boundary
- County Boundary

Keystone Pipeline Project



Map 9 of 21
Surveyed
Grasslands

CONFIDENTIAL

Feature ID	Survey Date	Start MP	End MP	County	State	Survey Type	Habitat Quality	Suitable T&E Habitat?
TDH1SDCL006	9/13/2006	278.4	279.2	Clark	SD	Drive By	Medium	Yes, prairie fringed orchid

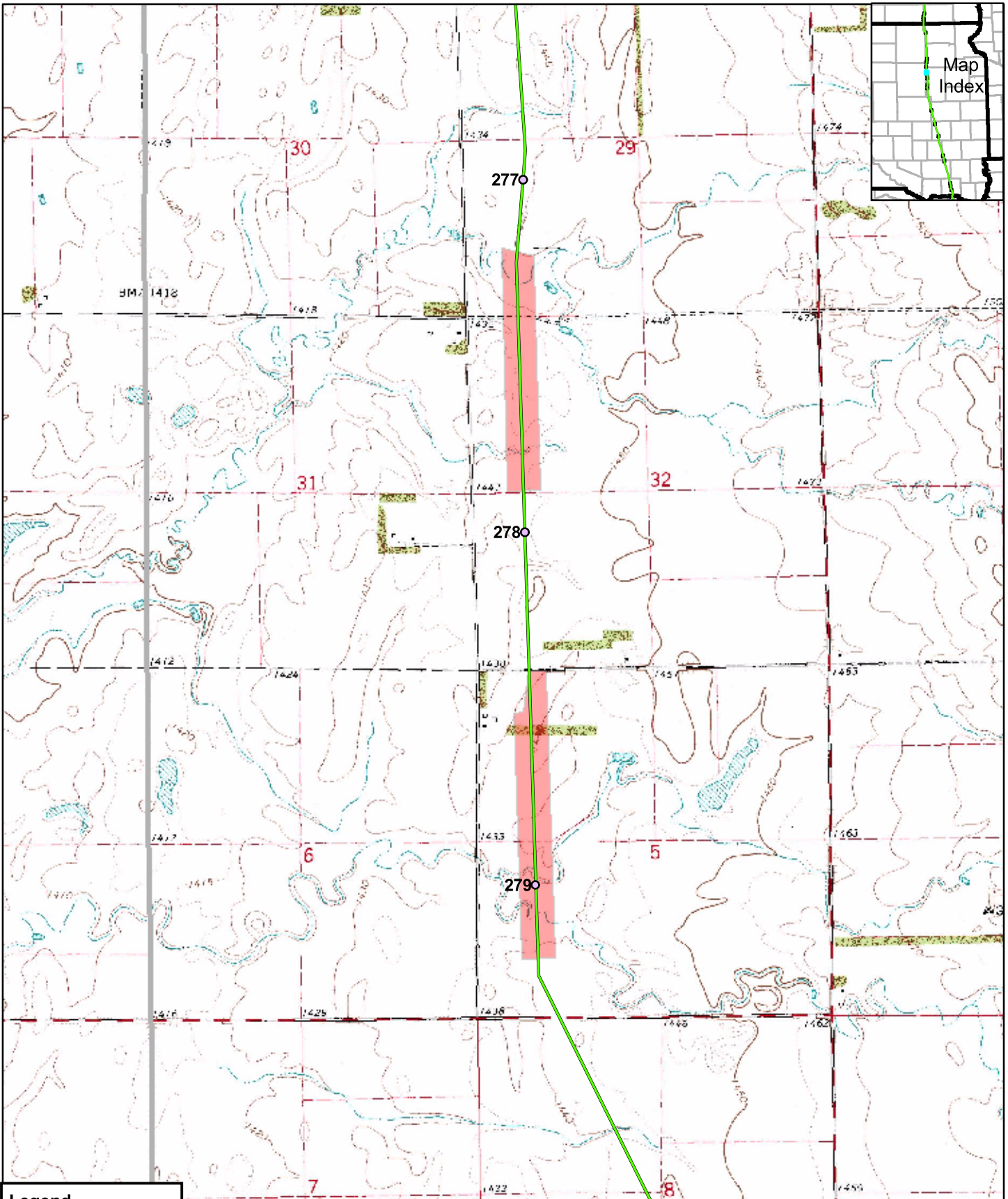
Site Summary: This is an area with exotic pasture grasses, such as crested wheat grass (*Agropyron cristatum*), and with exotic forage legumes such as alfalfa (*Medicago sativa*), yellow sweet clover (*Melilotus officinalis*), and clover (*Trifolium*). In this area of pasture and wetlands are upland spots with native plants that include hoary vervain (*Verbena stricta*), prairie cone flower (*Ratibida columnifera*), and silver scurf pea (*Pedimelum argophyllum*). This is potential prairie fringed orchid habitat.



Feature TDH1SDCL006: View of pasture (with several wetland spots) from the road.



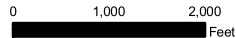
Feature TDH1SDCL006: Overview of pasture away from the wetland spots.



Legend

- Mileposts
- Proposed Centerline
- Surveyed Grasslands
- State Boundary
- County Boundary

Keystone Pipeline Project



Map 9 of 21
Surveyed
Grasslands

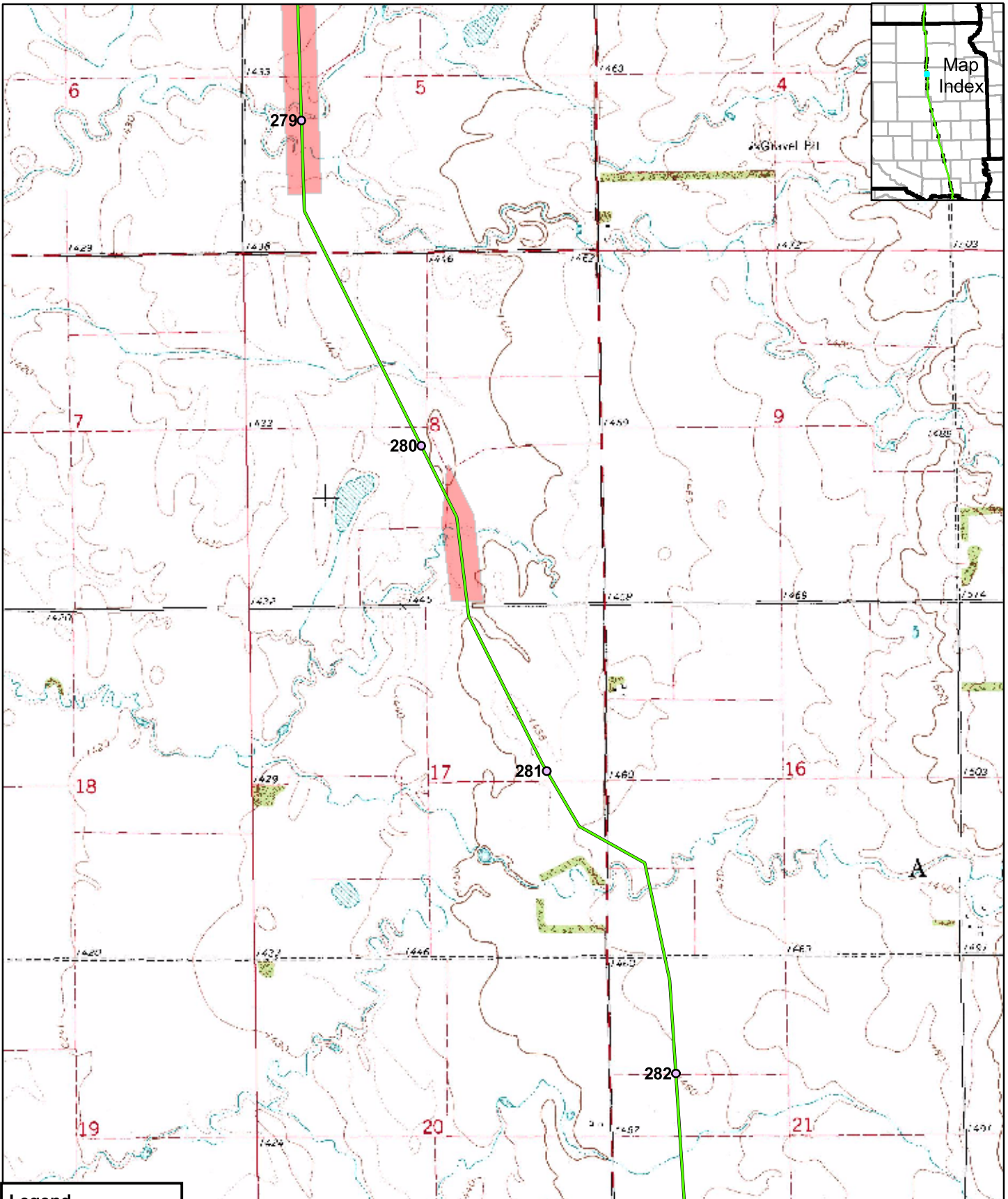
CONFIDENTIAL

Feature ID	Survey Date	Start MP	End MP	County	State	Survey Type	Habitat Quality	Suitable T&E Habitat?
TDH1SDCL004	9/11/2006	280.1	280.5	Clark	SD	Drive By	Low	No

Site Summary. This is a smooth brome (*Bromus inermis*) dominated pasture with an abundance of western ragweed (*Ambrosia psilostachya*). This is apparently an alkaline area due to the presence of saltgrass (*Distichlis spicata*) and gumweed (*Grindelia squarrosa*).



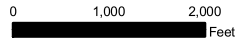
Feature TDH1SDCL004: General overview of site.



Legend

- Mileposts
- Proposed Centerline
- Surveyed Grasslands
- State Boundary
- County Boundary

Keystone Pipeline Project



Map 10 of 21
Surveyed
Grasslands

CONFIDENTIAL

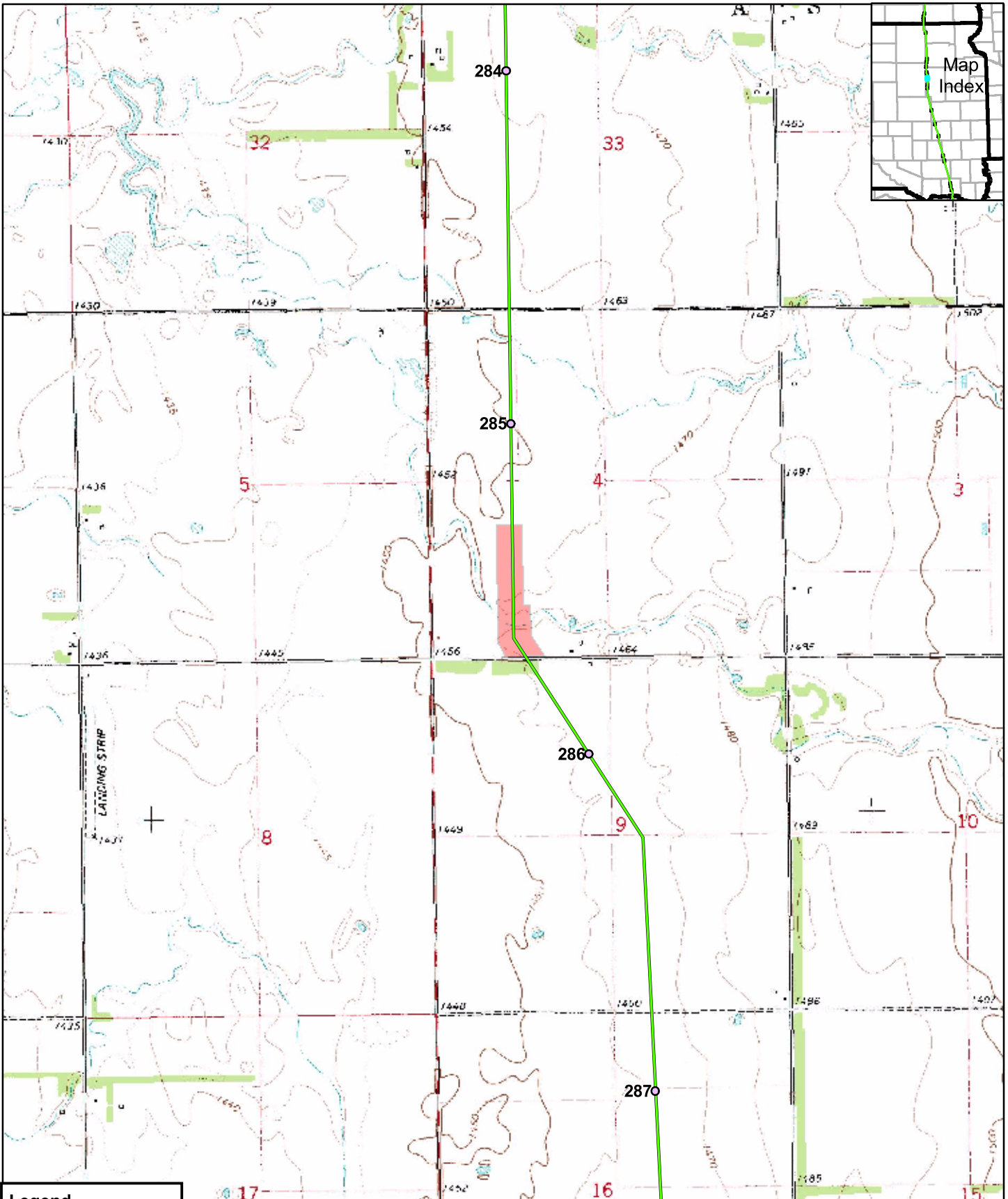
Feature ID	Survey Date	Start MP	End MP	County	State	Survey Type	Habitat Quality	Suitable T&E Habitat?
TDH1SDCL003	9/11/2006	285.3	285.7	Clark	SD	Drive By	Low	No

Site Summary: This is a smooth brome (*Bromus inermis*) dominated pasture with lots of western ragweed (*Ambrosia psilostachya*). A heavily grazed creek in the corridor has a few peach-leaf willows (*Salix amygdaloides*) and wormwood (*Artemisia absinthium*) is common in the floodplain pasture.



Feature TDH1SDCL003: View of weedy, smooth brome (*Bromus inermis*) pasture from the road.

CONFIDENTIAL



Legend


- Mileposts
- Proposed Centerline
- Surveyed Grasslands
- State Boundary
- County Boundary

Keystone Pipeline Project

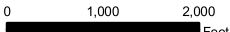


TransCanada
In business to deliver

N



0 1,000 2,000 Feet



Map 11 of 21
Surveyed
Grasslands

CONFIDENTIAL

Feature ID	Survey Date	Start MP	End MP	County	State	Survey Type	Habitat Quality	Suitable T&E Habitat?
TDH1SDCL002	9/11/2006	293.7	294.1	Clark	SD	Drive By	Low	No

Site Summary: This is a heavily grazed wetland/upland inclusion area where ironweed (*Vernonia* spp.) and cocklebur (*Xanthium canadense*) are common. There are a few peach-leaf willows (*Salix amygdaloides*) and wormwood (*Artemisia absinthium*) is common in the floodplain pasture.



Feature TDH1SDCL002: The tree is a peach-leaf willow (*Salix amygdaloides*) that is near center line.

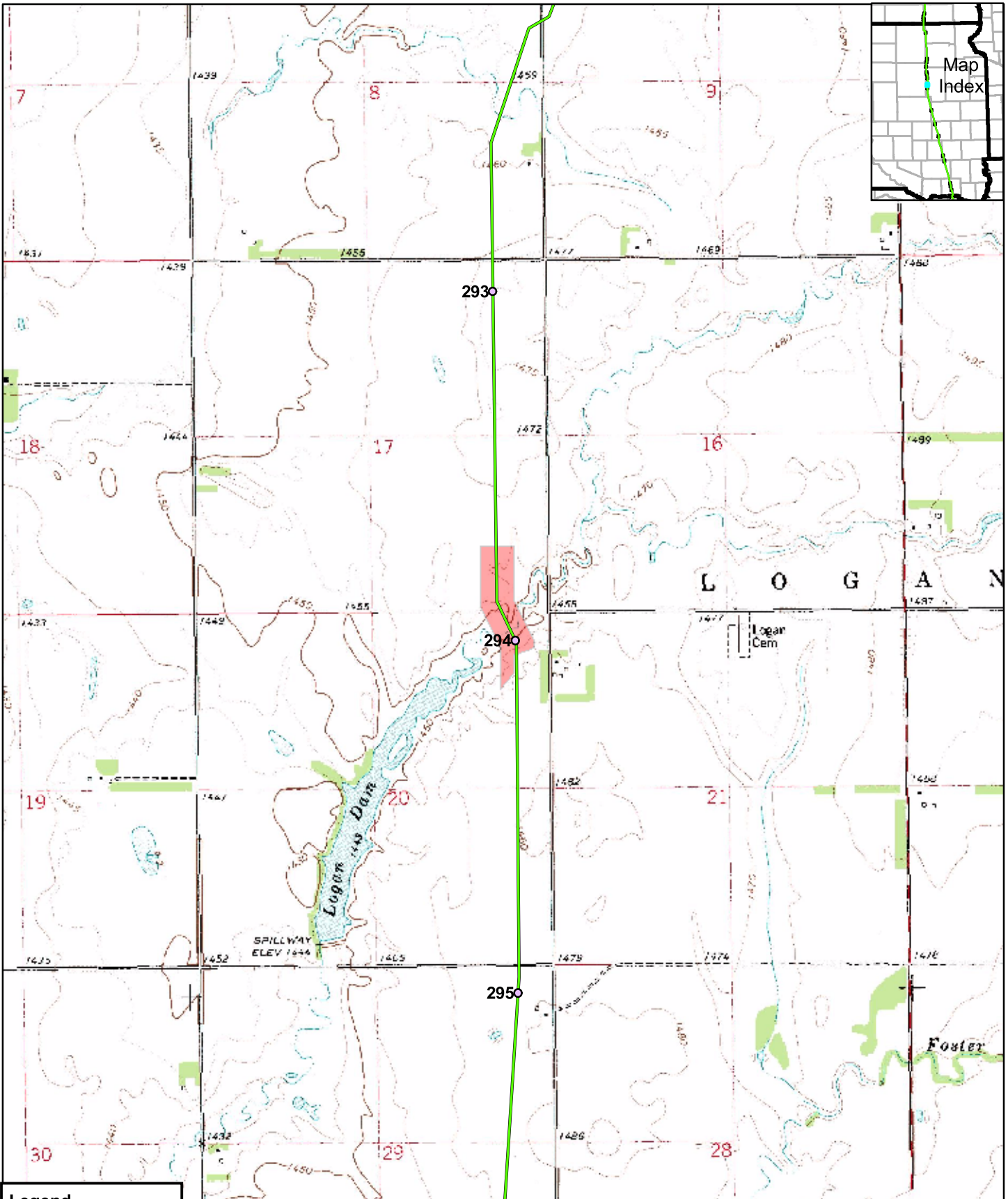
CONFIDENTIAL



Feature TDH1SDCL002: Just east of the corridor by the road the same stream that also crosses center line has an abundance of Canadian thistle (*Cirsium arvense*).



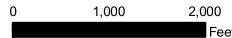
Feature TDH1SDCL002: Wormwood (*Artemisia absinthium*) in smooth brome (*Bromus inermis*) pasture



Legend

- Mileposts
- Proposed Centerline
- Surveyed Grasslands
- State Boundary
- County Boundary

Keystone Pipeline Project



Map 12 of 21
Surveyed
Grasslands

CONFIDENTIAL

Feature ID	Survey Date	Start MP	End MP	County	State	Survey Type	Habitat Quality	Suitable T&E Habitat?
TDH1SDCL001	9/11/2006	296.9	297.9	Clark	SD	Site Visit	Medium	Yes, Dakota skipper

Site Summary: This is a medium quality grassland. It has a stream with rolling hills with native grasses present to the west of the stream. There are pasture grasses such as crested wheat (*Agropyron cristatum*), but there are also large areas with native grasses such as blue grama (*Bouteloua gracilis*) and little blue stem (*Schizachyrium scoparium*). There are also native forbs, including pollen plants for the Dakota skipper butterfly.



Feature TDH1SDCL001: Overview of site.



Feature TDH1SDCL001: Over view of this area looking south from the road.

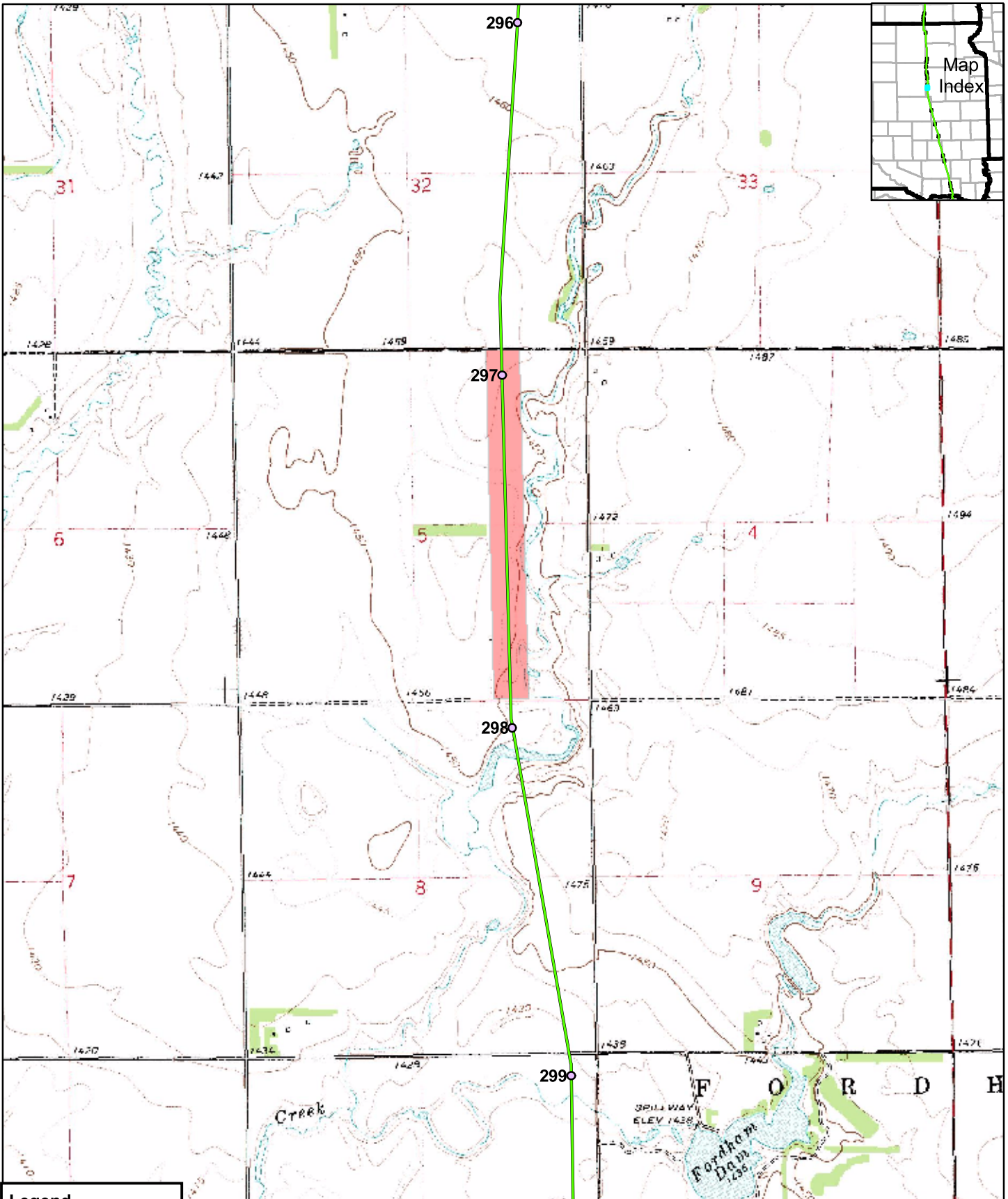


Feature TDH1SDCL001: Hillside with an abundance of goldenrod (*Solidago* spp.).



Feature TDH1SDCL001: Yellow flowers of gumweed (*Grindelia squarosa*) and spikes of hoary vervain (*Verbena stricta*).

CONFIDENTIAL



Legend


- Mileposts
- Proposed Centerline
- Surveyed Grasslands
- State Boundary
- County Boundary

Keystone Pipeline Project



TransCanada
In business to deliver

N



0 1,000 2,000
Feet

Map 13 of 21
Surveyed
Grasslands

CONFIDENTIAL

Feature ID	Survey Date	Start MP	End MP	County	State	Survey Type	Habitat Quality	Suitable T&E Habitat?
TDH1SDKI001	9/16/2006	325.1	326.4	Kingsbury	SD	Drive By	High/North Medium/South	No

Site Summary: A road dissects a high quality grassland to the north and a medium quality grassland to the south. This is a good example of the impact that grazing can have in terms of allowing exotic plants to invade and to become more common in grazed areas. This is the only area where the noxious leafy spurge (*Euphorbia esula*) was seen. The high quality pasture includes large, flowering stands of blue grama (*Bouteloua gracilis*) and patches of little blue stem (*Schizachyrium scoparium*). Since there was no adjacent prairie, and essentially no pollen plants, this site was not considered to be Dakota skipper habitat.



Feature TDH1SDKI001: High quality prairie to the north of the road.



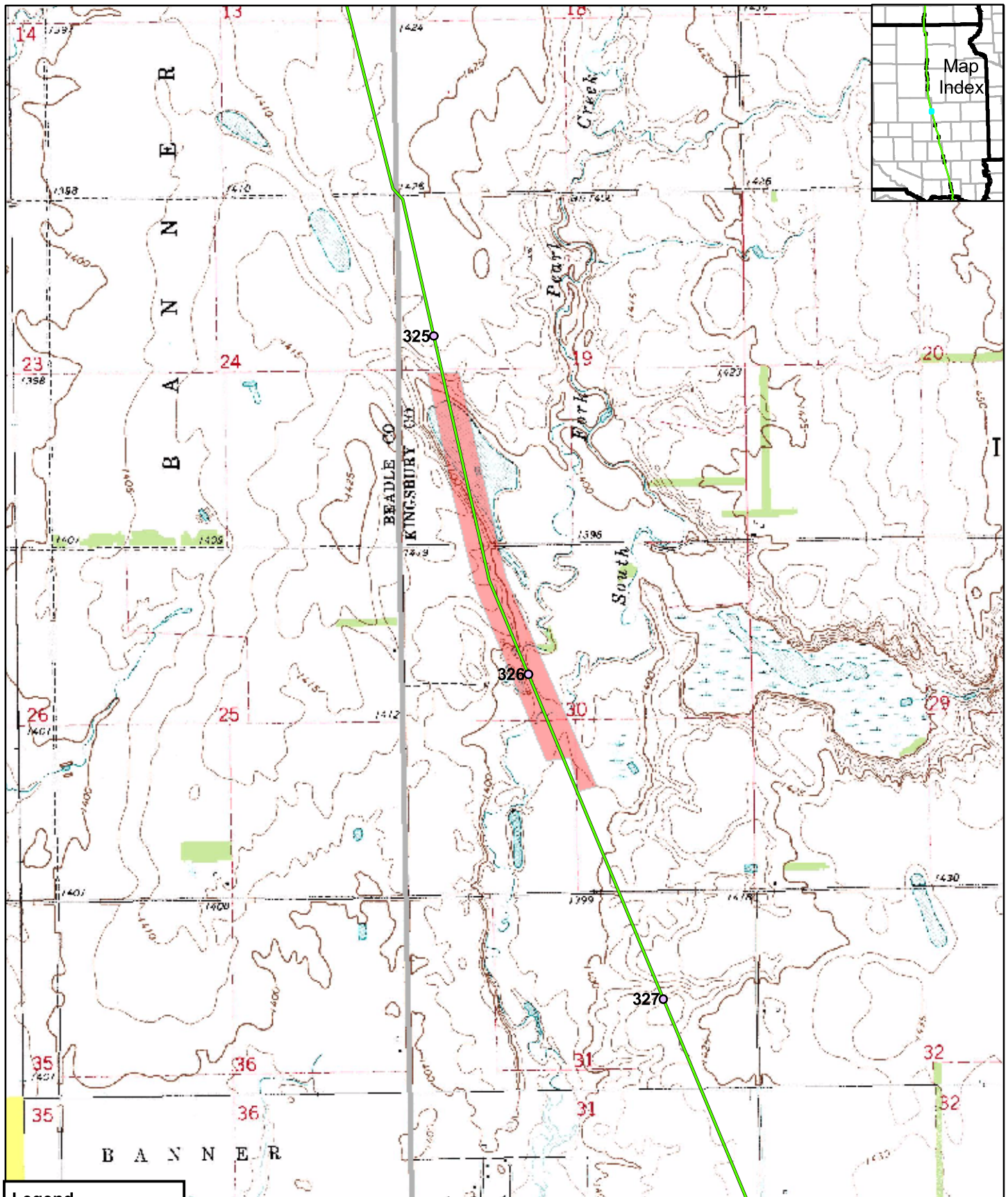
Feature TDH1SDKI001: A large stand of flowering blue grama (*Bouteloua gracilis*) north of road.



Feature TDH1SDKI001. Medium quality, heavily grazed grassland south of road.



Feature TDH1SDKI001: Leafy spurge (*Euphorbia esula*) in heavily grazed pasture south of road.



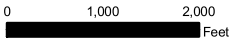

Legend

- Mileposts
- Proposed Centerline
- Surveyed Grasslands
- State Boundary
- County Boundary

Keystone Pipeline Project



TransCanada
In business to deliver



0 1,000 2,000
Feet

Map 14 of 21
Surveyed
Grasslands

CONFIDENTIAL

Feature ID	Survey Date	Start MP	End MP	County	State	Survey Type	Habitat Quality	Suitable T&E Habitat?
TDH1SDMI001	9/16/2006	342.9	344.0	Miner	SD	Drive By	Low	No

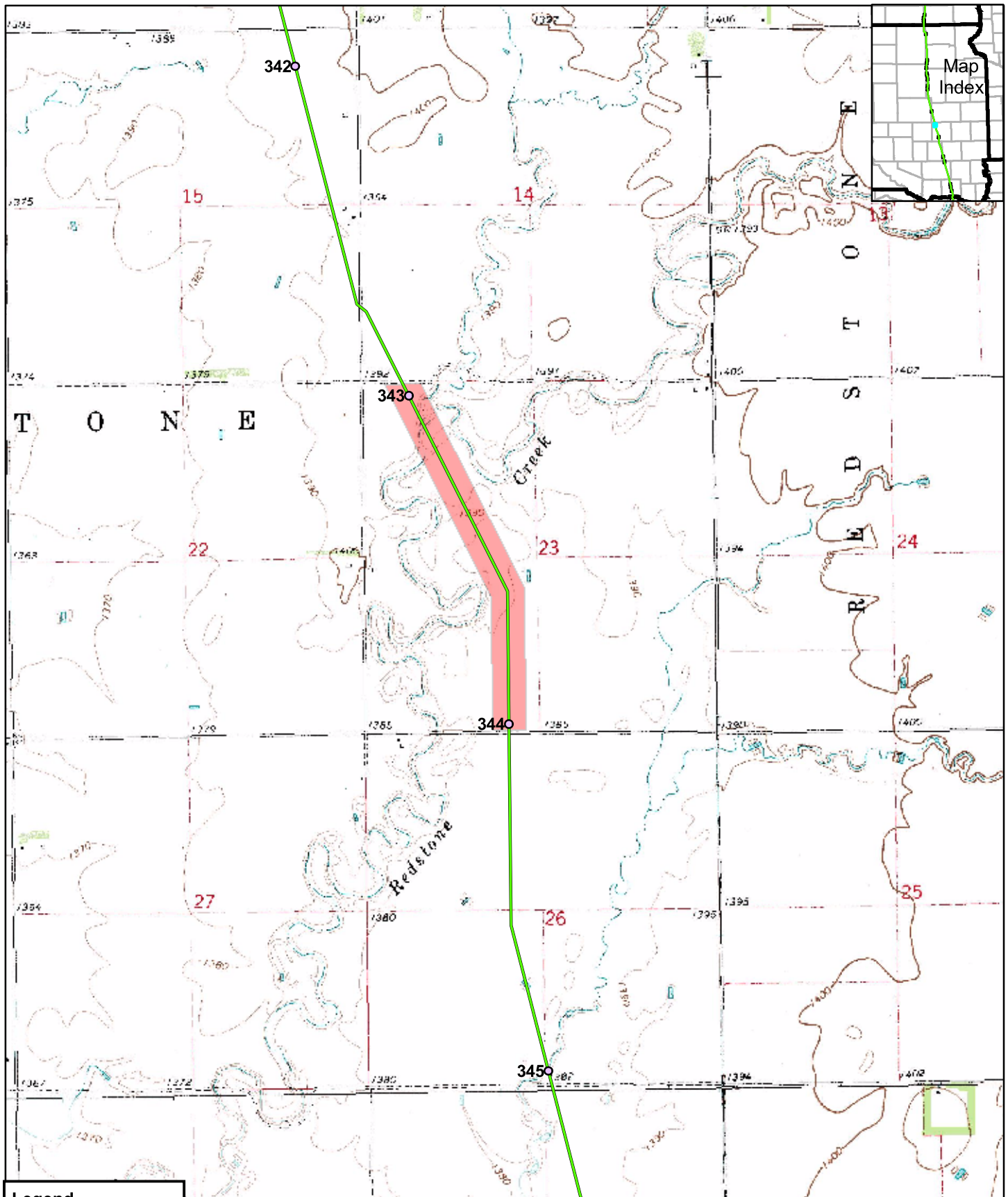
Site Summary: A pasture of introduced grasses that has nearly all smooth brome (*Bromus inermis*) and some crested wheatgrass (*Agropyron cristatum*). There are cattails (*Typha*) in the wetland spots and blue grama (*Bouteloua gracilis*) on the few upland areas.



Feature TDH1SDMI001: Overview of this site to the North from the road.



Feature TDH1SDMI001: Overview of the site south from the road.




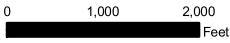
Legend

- Mileposts
- Proposed Centerline
- Surveyed Grasslands
- State Boundary
- County Boundary

Keystone Pipeline Project



TransCanada
In business to deliver

0 1,000 2,000 Feet

Map 15 of 21
Surveyed
Grasslands