

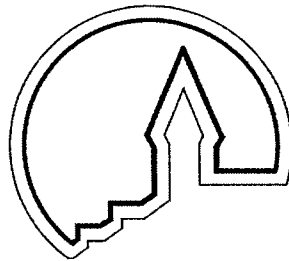
Contains Privileged Information---Do Not Release

Interim Cultural Resources Management Report

Phase I Survey Results and Recommendations for
Prehistoric and Historic Sites within the Keystone Pipeline Project
Corridor, Madison, Bond, Fayette, and Marion Counties, Illinois

Prepared for
ENSR
Fort Collins, Colorado

Prepared By
American Resources Group, Ltd.
Carbondale, Illinois



Principal Investigator
Steve Titus

Authors
Jeff Myers
Blaine Ensor
Cally Lence
Kevin Lomas

January 2007

Contains Privileged Information---Do Not Release

Table of Contents

Introduction	1
Phase I Results	4
Site JM-31	5
Site JM-30	9
Site JM-29	11
Site 11SM2018	14
Site 11MS178	17
Site 11MS1293	18
Site 11MS1292	19
Site JM-33	20
Site 11MS831	23
Site JM-27	27
Site ARG-39	30
Site JRL-3	33
Site JM-26	36
Site JM-20	39
Site JM-19	42
Site JM-18	45
Site JM-17	49
Site JM-16	52
Site JM-13	55
Site JM-11	58
Site JM-12	61
Site JM-10	63
ARG-38	65
Site JM-7	69
Site JM-8	72
Site JM-9	74
Site JM-15	77
Site JM-6	79
Site JM-5	81
Site JM-4	85
Site JM-3	87
Site JM-2	90
Site 11FY20	92
Site ARG-2	97

Site JRL-2	99
Site 11FY197	101
Site JM-1	106
Site ARG-36	108
Site JM-14	110
Site ARG-35	113
References Cited	115
Appendix A. Artifact Inventory Tables	119
Appendix B. Selected Project Photographs	121

LIST OF FIGURES

Figure 1.	General location of the proposed Keystone pipeline route in Illinois	2
Figure 2.	Topographic location, sites JM-31, JM-30, JM-29, and 11MS2018	7
Figure 3.	Site map, JM-31	8
Figure 4.	Site map, JM-30	10
Figure 5.	Site map, JM-29	13
Figure 6.	Site map, 11MS2018	16
Figure 7.	Topographic location, sites JM-33 and 11MS831	21
Figure 8.	Site map, JM-33	22
Figure 9.	Site map, 11MS831	26
Figure 10.	Topographic location, site JM-27	28
Figure 11.	Site map, JM-27	29
Figure 12.	Topographic location, site ARG-39	31
Figure 13.	Site map, ARG-39	32
Figure 14.	Topographic location, site JRL-3	34
Figure 15.	Site map, JRL-3	35
Figure 16.	Topographic location, sites JM-26, JM-20, JM-19, JM-18, and JM-17	37
Figure 17.	Site map, JM-26	38
Figure 18.	Site map, JM-20	41
Figure 19.	Site map, JM-19	44
Figure 20.	Site map, JM-18	48
Figure 21.	Site map, JM-17	51
Figure 22.	Topographic location, sites JM-16 and JM-13	53
Figure 23.	Site map, JM-16	54
Figure 24.	Site map, JM-13	57
Figure 25.	Topographic location, sites JM-11, JM-12, and JM-10	59
Figure 26.	Site map, JM-11	60
Figure 27.	Site map, JM-12	62
Figure 28.	Site map, JM-10	64
Figure 29.	Topographic location, ARG-38	67

Contains Privileged Information—Do Not Release

Figure 30.	Site map, ARG-38	68
Figure 31.	Topographic location, sites JM-7, JM-8, JM-9, JM-15, and JM-16	70
Figure 32.	Site map, JM-7	71
Figure 33.	Site map, JM-8	73
Figure 34.	Site map, JM-9	76
Figure 35.	Site map, JM-15	78
Figure 36.	Site map, JM-6	80
Figure 37.	Topographic location, sites JM-5, JM-4, JM-3, and JM-2	83
Figure 38.	Site map, JM-5	84
Figure 39.	Site map, JM-4	86
Figure 40.	Site map, JM-3	89
Figure 41.	Site map, JM-2	91
Figure 42.	Topographic location, sites 11FY20, ARG-2, and JRL-2	95
Figure 43.	Site map, 11FY20	96
Figure 44.	Site map, ARG-2	98
Figure 45.	Site map, JRL-2	101
Figure 46.	Topographic location, sites 11FY197, JM-1, ARG-36, JM-14, and ARG-35 ..	104
Figure 47.	Site map, 11FY197	105
Figure 48.	Site map, JM-1	107
Figure 49.	Site map, ARG-36	109
Figure 50.	Site map, JM-14	112
Figure 51.	Site map, ARG-35	114

LIST OF TABLES

Table 1.	Summary and Evaluation for Sites Investigated within the Illinois Proposed Keystone Pipeline Project Corridor	3
-----------------	---	---

Introduction

This document describes the Phase I survey results for fieldwork completed between May 8, and December 5, 2006, for portions of the Illinois segment of the Keystone pipeline corridor in Madison, Bond, Fayette, and Marion counties (Figure 1). The primary objectives of the Phase I survey were to identify all cultural resources located within the proposed project corridor and to provide an assessment of their eligibility for listing to the National Register of Historic Places (NRHP). Site descriptions, site locations, site plan maps, and NRHP site evaluations are included in this document. A full technical report will be submitted upon completion of the Phase I survey of the entire proposed project corridor in Illinois.

The survey corridor for the Illinois segment of the proposed Keystone pipeline corridor is 200 feet (60.96 m) wide in most places, although the width of the corridor expands to 300 feet (91.44 m) in the few locations where it diverges from an existing pipeline. Where it parallels and abuts an existing pipeline, the entire 200-foot-wide corridor is south of the existing pipeline; consequently, the northern boundary of the project corridor depicted on the site maps typically corresponds to the location of the existing petroleum pipelines, usually the Platte, Buckeye, Marathon or 2Rivers pipelines. Along the majority of the project corridor, the centerline for the proposed Keystone pipeline was staked 40 feet south of the existing pipeline. Workspace for machinery, processing, and fill management typically will lie south of the existing pipeline and the proposed Keystone pipeline.

To date, the Phase I survey has been completed for just under 49 miles (87.5 percent) of the 56 miles of the proposed pipeline route in Illinois. Fieldwork was accomplished in a series of segments dictated by property access limitations, crop and weather conditions, and re-route alignment changes. Phase II testing began in September 2006, concurrent with continuation of the Phase I survey segments and re-route areas. Results of the Phase II site evaluations are presented in a separate report (Schwegman 2007).

Thirty-seven archeological sites have been identified within the surveyed portions of the project corridor, including 19 prehistoric sites, 10 historic sites and eight sites with both prehistoric and historic components (Table 1). One historic site (JM-14) includes standing structures. Preliminary assessments of site significance suggest that 10 of the 37 sites may be potentially eligible for listing on the NRHP.

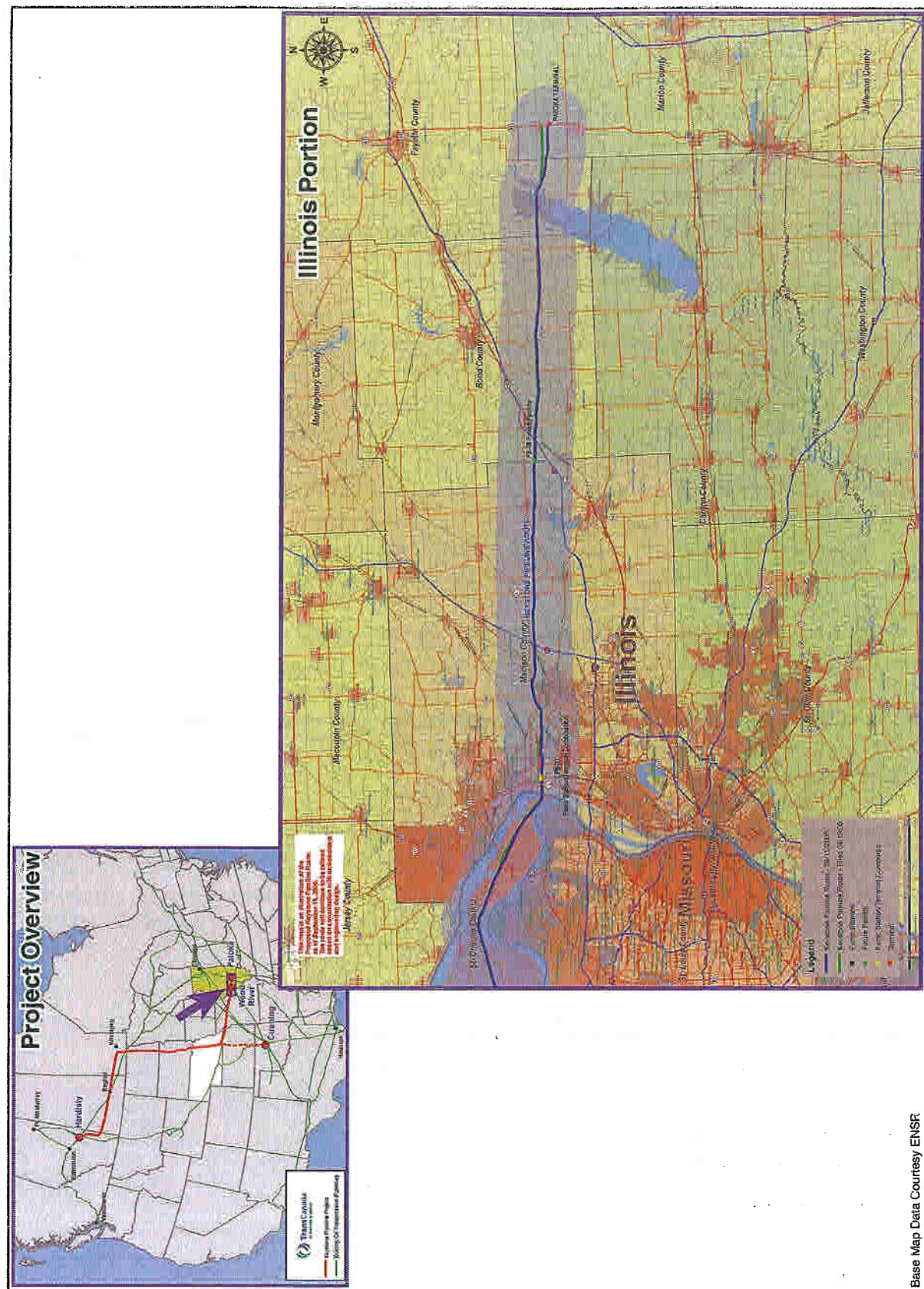


Figure 1. General location of the proposed Keystone pipeline route in Illinois.

Confidential Information removed from document