

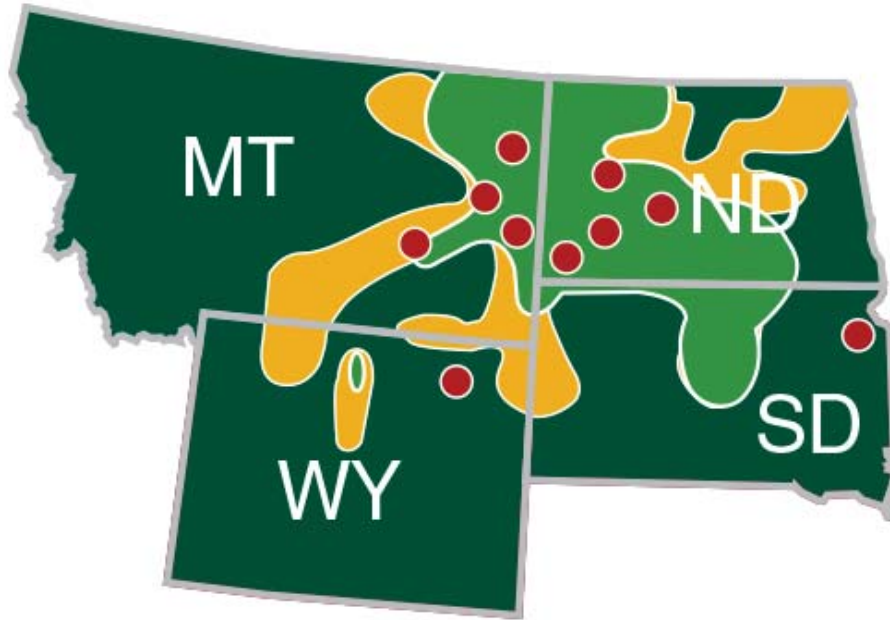


# Public Hearing

May 20, 2014



- ⦿ Applicant overviews
- ⦿ Project development
- ⦿ Project overview
- ⦿ Routing process
- ⦿ Route Change Requests
- ⦿ Engineering design
- ⦿ Project outreach
- ⦿ Right-of-way
- ⦿ Next steps



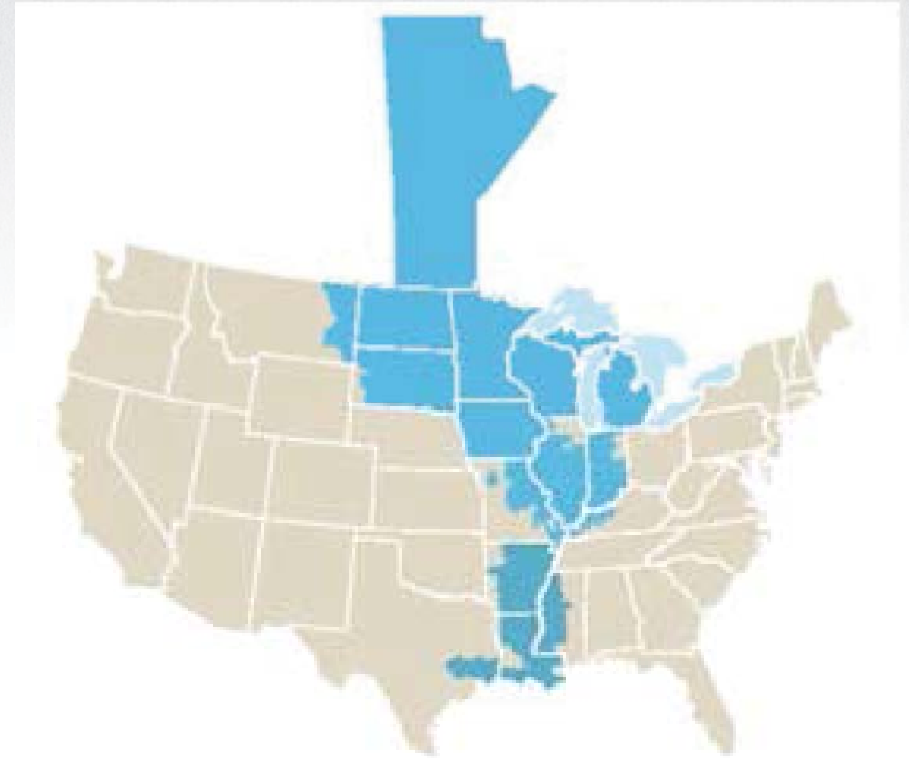
- Electric utility areas
- Natural gas utility areas
- Electric generating stations
- States of operations

- ⦿ Headquartered in Bismarck, North Dakota
- ⦿ Electric and/or natural gas service to parts of Montana, North Dakota, South Dakota, and Wyoming
- ⦿ Service area covers about 168,000 square miles
- ⦿ Approximately 312,000 customers



- Headquartered in Fergus Falls, Minnesota
- Electric service to parts of Minnesota, North Dakota, and South Dakota
- Service area covers about 70,000 square miles
- Approximately 129,400 customers in 422 communities

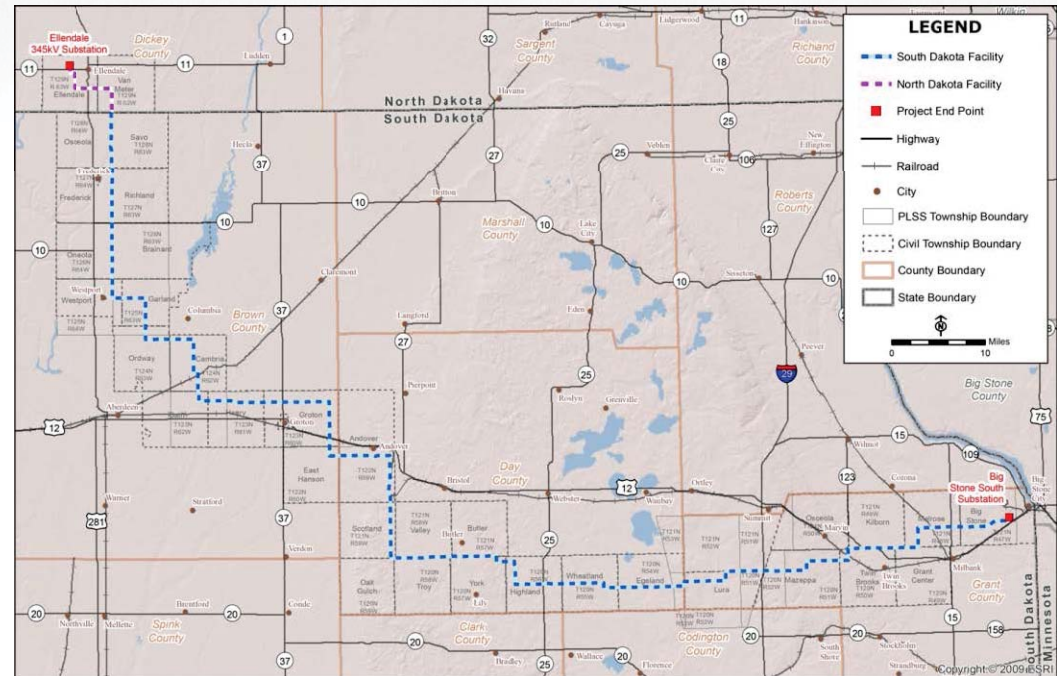
- MISO (Midcontinent Independent System Operator) consists of 48 transmission owning utilities including **Montana-Dakota Utilities Co.** and **Otter Tail Power Company.**



- ◎ MISO is an essential link in the safe, cost-effective delivery of electric power across all or parts of 15 U.S. states and the Canadian province of Manitoba. As a Regional Transmission Organization, MISO assures consumers of unbiased regional grid management and open access to the transmission facilities under MISO's functional supervision.

- ◎ Multi-value project (MVP)
  - Regional reliability
  - Economic value
  - Support for renewable energy public policy objectives
  
- ◎ On December 8, 2011 MISO approved a portfolio of 17 MVP projects which included the BSSE 345kV transmission line.

- Joint project with Otter Tail Power Company and Montana-Dakota Utilities Co.
- New 345 kV transmission line
  - Ownership to be approximately 50% MDU and 50% OTP
- Approximately 160-170 miles
- Endpoints:
  - Big Stone South substation near Big Stone City, SD
    - OTP ownership
  - New Ellendale substation near Ellendale, ND
    - MDU ownership
- Anticipated project cost \$290-\$370 Million
- In service 2019





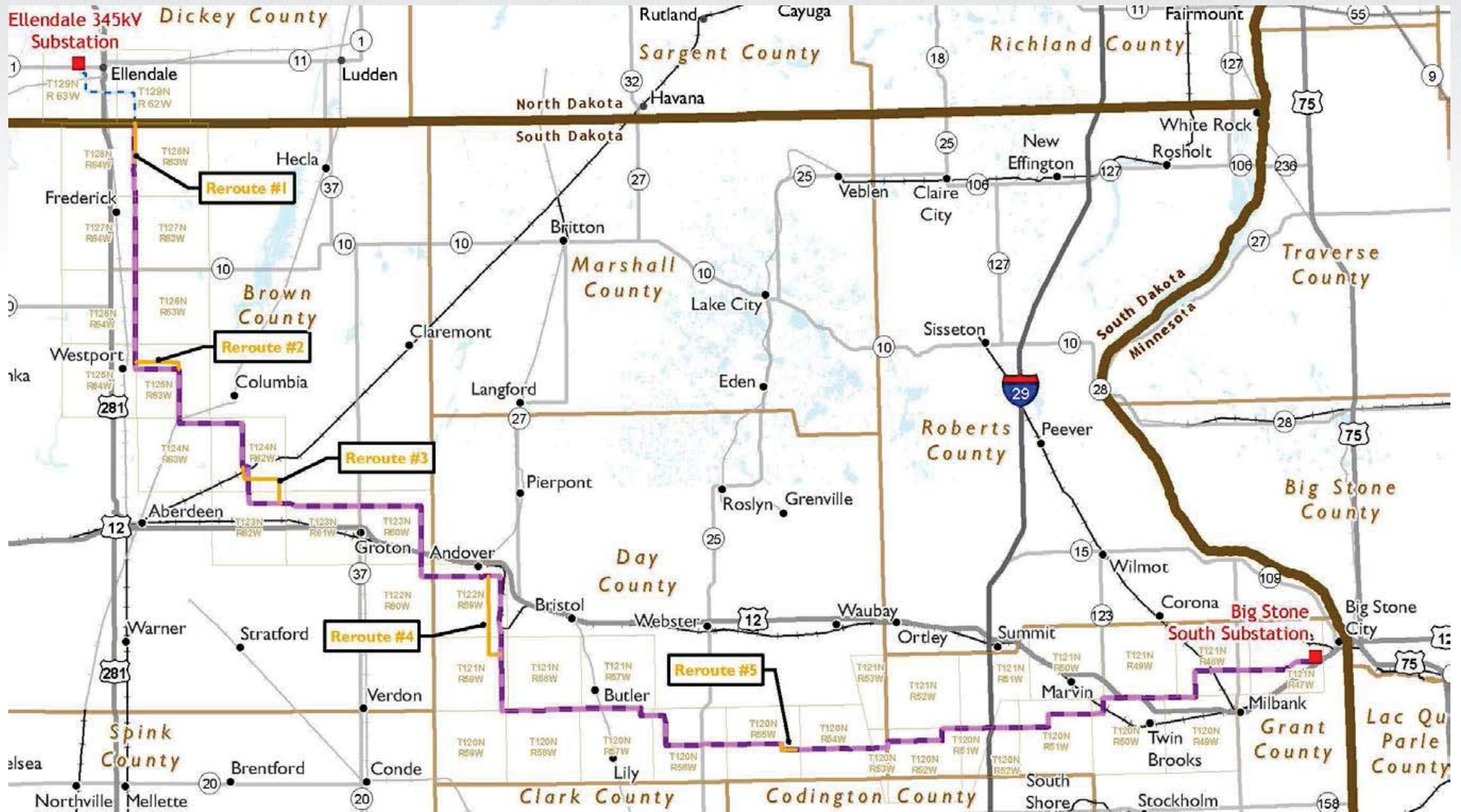
- ◎ Short term local economic benefits during construction
  - Construction expenditures (estimated range \$3 – \$7 Million through construction period)
  - Other tax benefits: (estimated range \$5.5 – \$9 Million)
    - Sales and use taxes
    - Contractor taxes
- ◎ Long term local benefits
  - Increased taxes paid to affected counties/townships
  - Estimated annual property taxes paid by Project:
    - \$715,000 – \$885,000 in Brown County
    - \$535,000 - \$755,000 in Day County
    - \$490,000 - \$605,000 in Grant County

## Information evaluated:

- ⦿ Overall length and cost
- ⦿ Existing high voltage transmission lines and transportation infrastructure
- ⦿ Section lines
- ⦿ Populated areas/residences
- ⦿ Environmental and engineering considerations
- ⦿ River crossing locations
- ⦿ Public and agency feedback

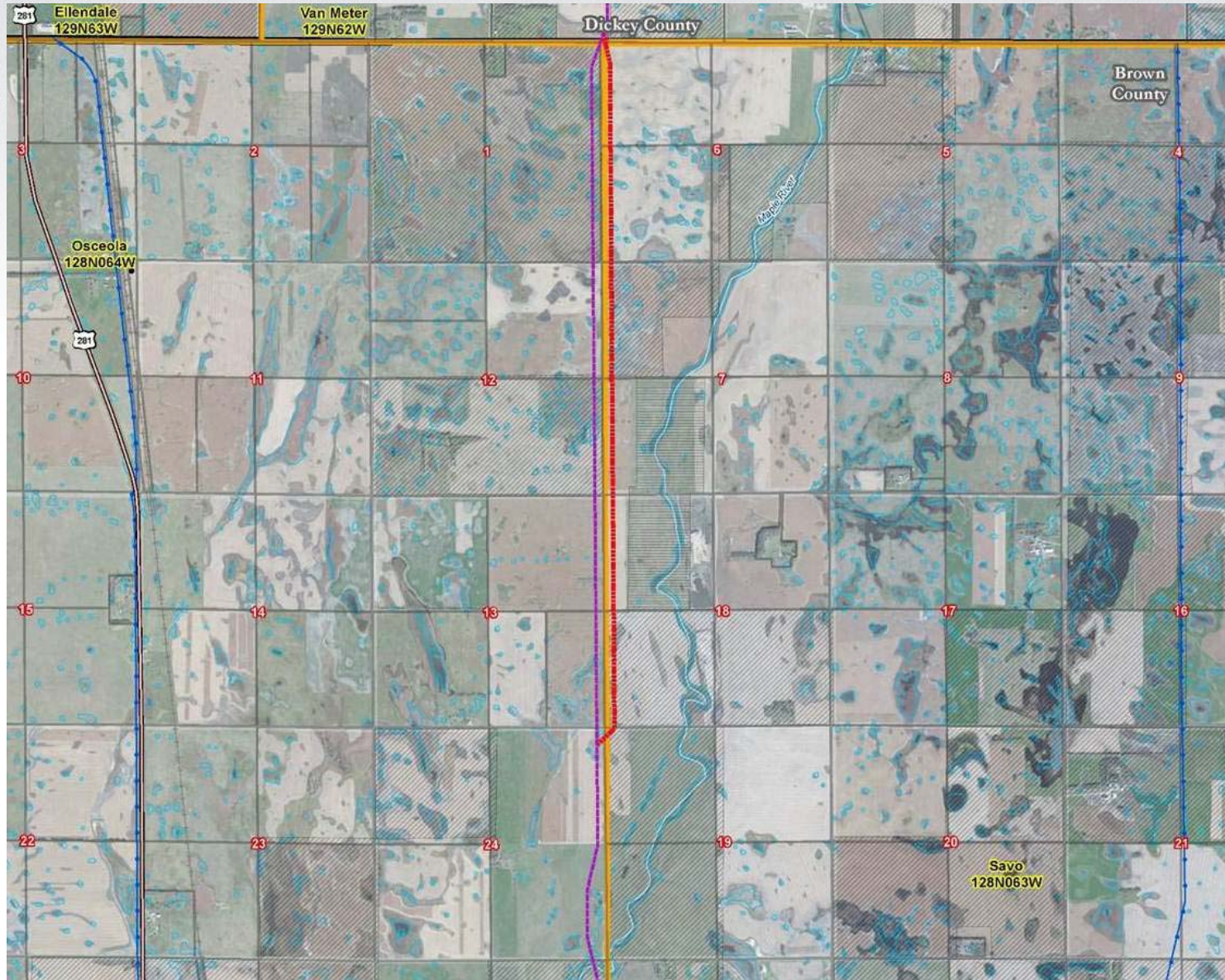
- ⦿ Total of 36 Route Change Requests (RCR) have been reviewed by the project team
- ⦿ Of this total, 5 RCRs are under negotiation that required additional landowner notifications
- ⦿ The 32 landowners impacted by these 5 RCRs are the reason this additional hearing is occurring

# Potential Route Changes

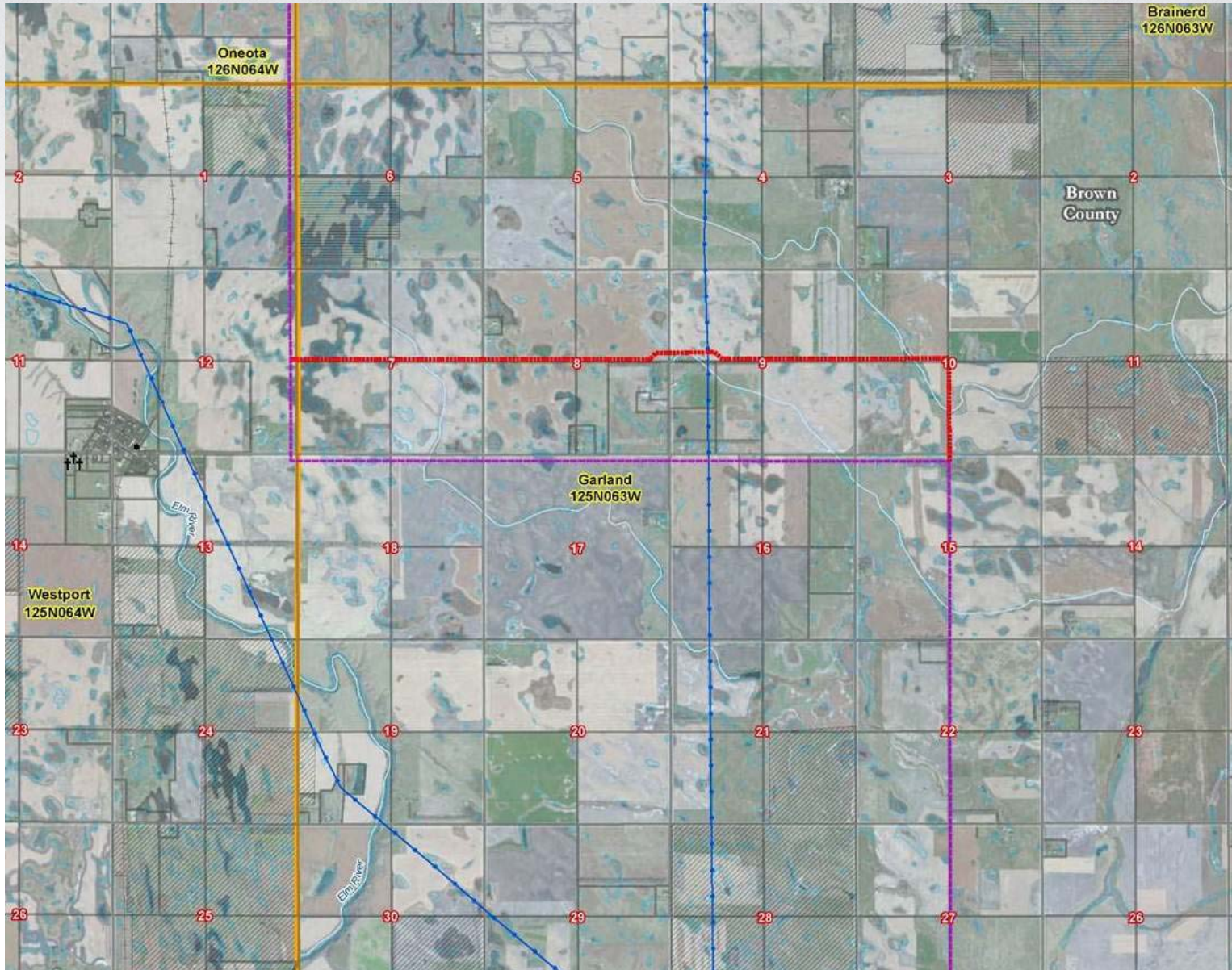


- ◎ Route Change Requests are reviewed by the project team using the same routing criteria as was used to select the original route.
- ◎ Of the 32 RCRs proposed, 14 have been approved, 5 were not approved and the rest are still under investigation.

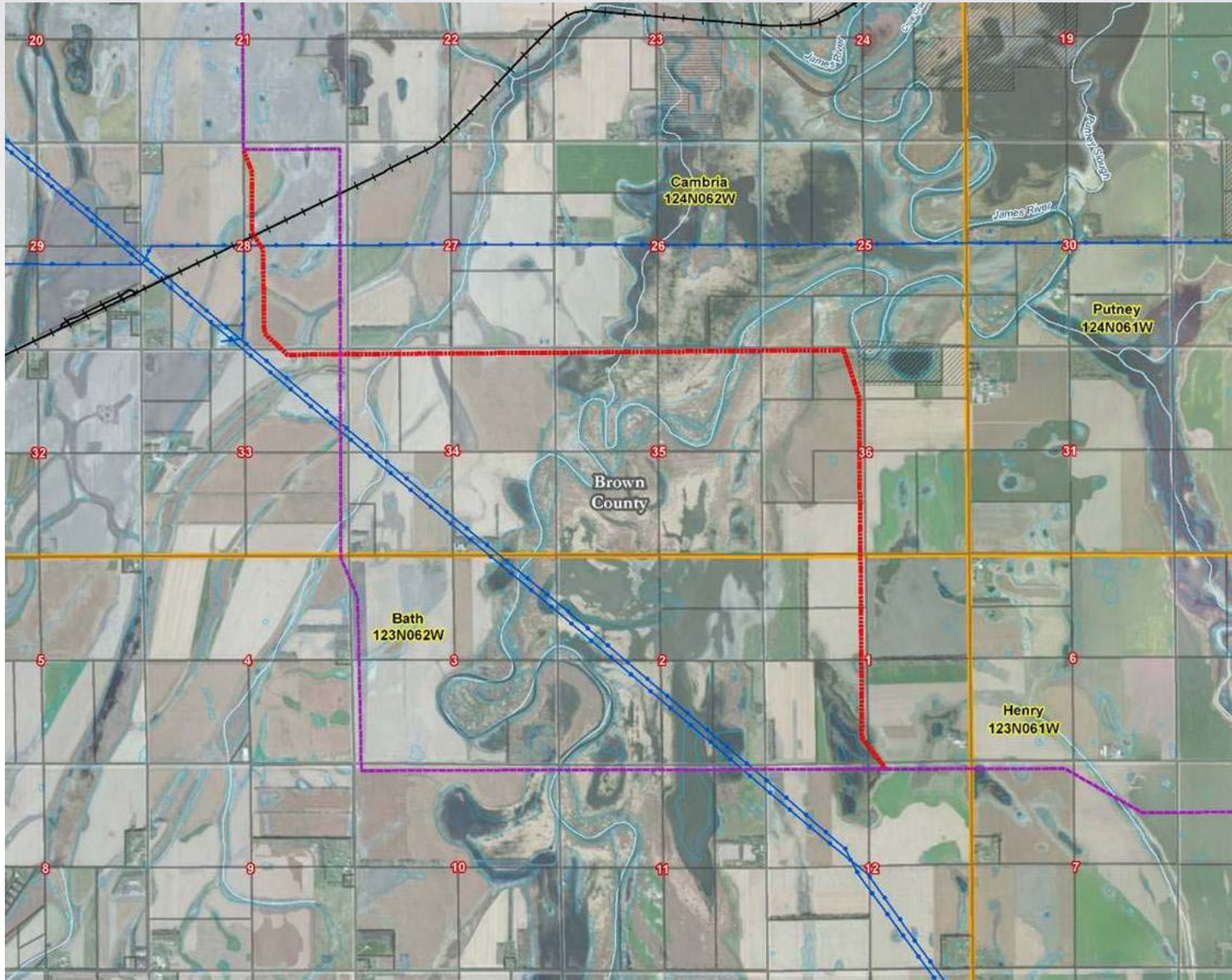
# Potential Route Change #1



# Potential Route Change #2

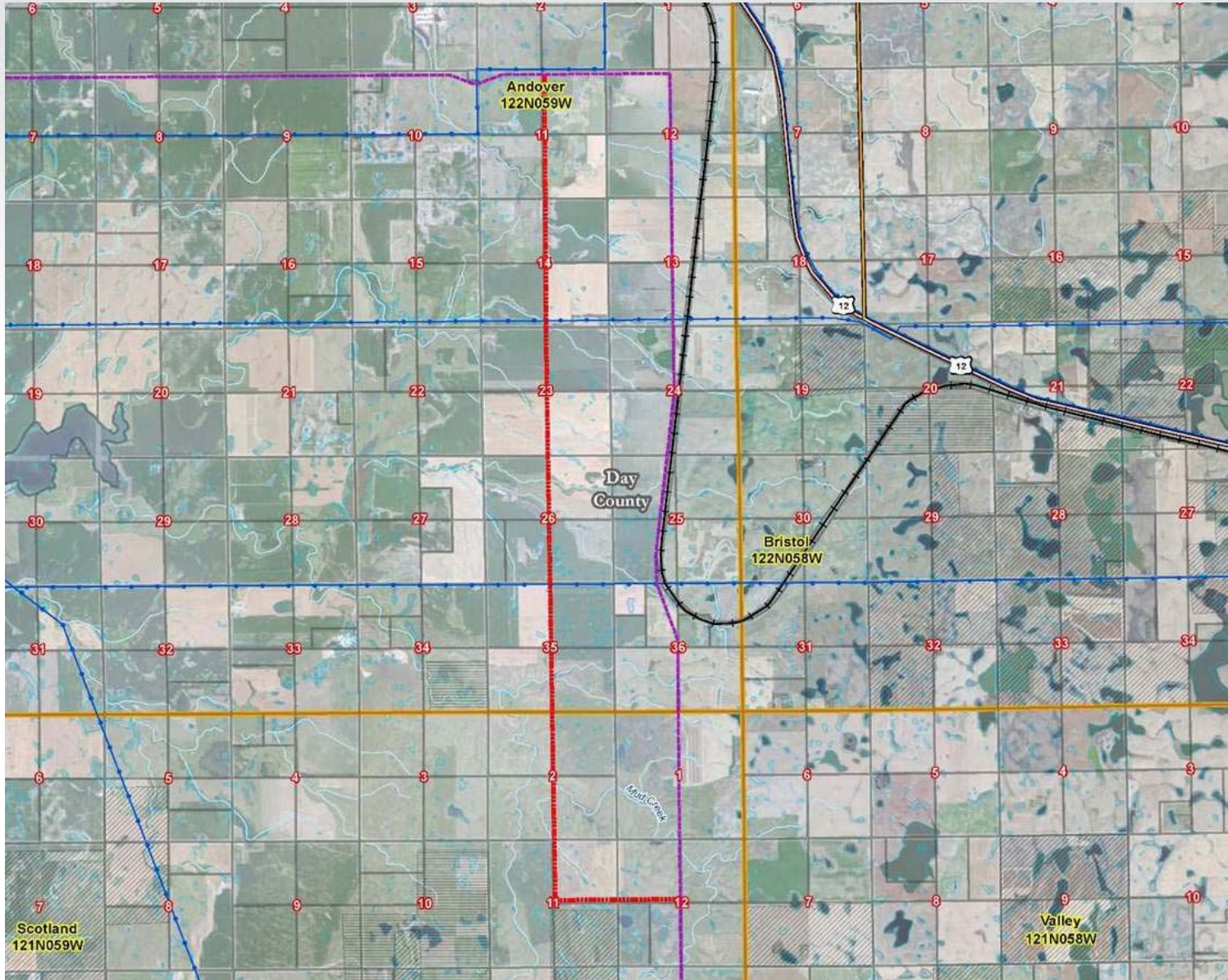


# Potential Route Change #3

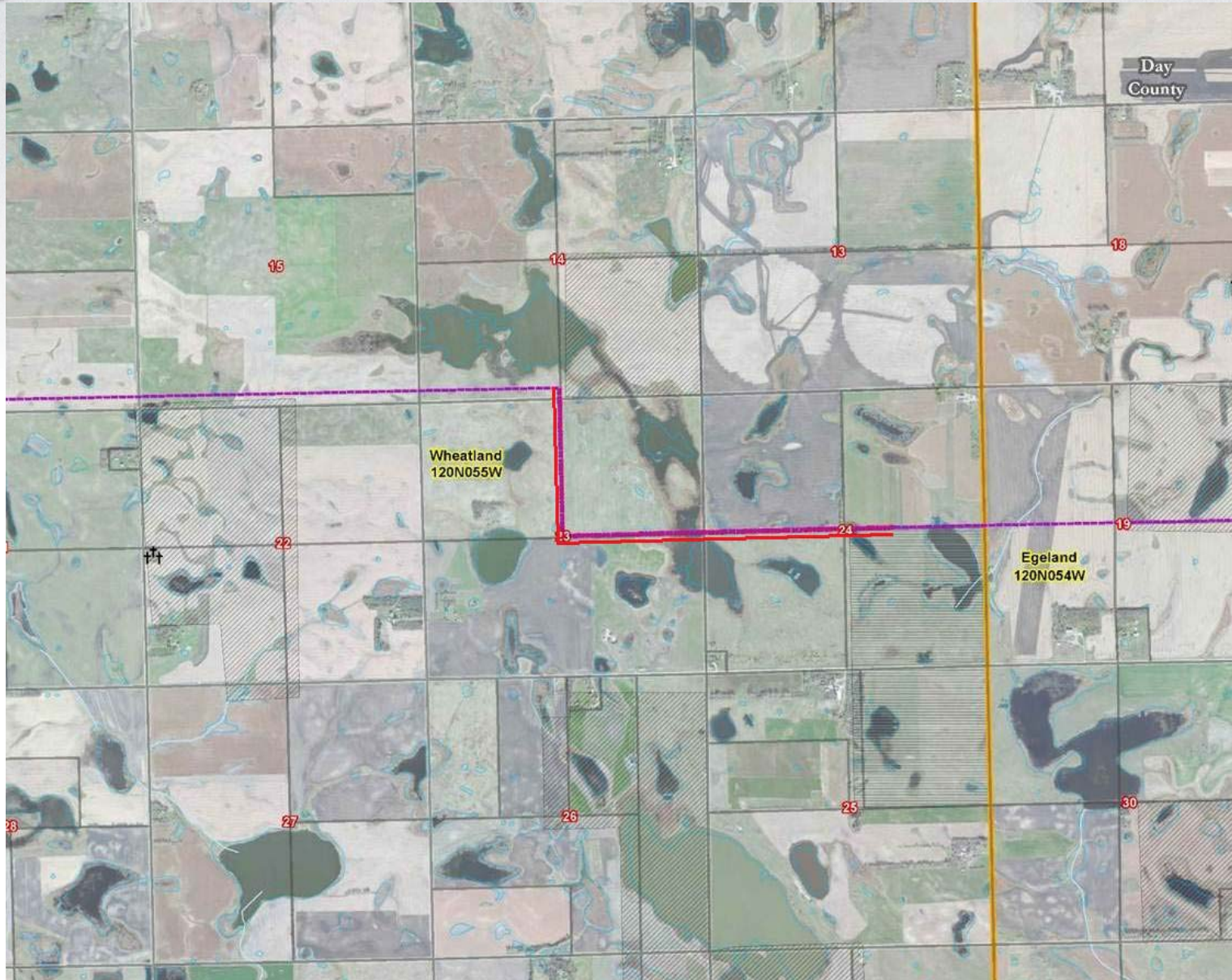




# Potential Route Change #4



# Potential Route Change #5





Average measurements	
Above-grade height	125 - 155 ft
Foundation diameter	6 - 11 ft
Span	700 - 1200 ft
Structures per mile	5 - 6
Minimum ground clearance	30 ft

003552

**1** Survey structure locations and identify ingress and egress locations.

**2** Auger the holes where the structure poles will be set and pour foundation (if required).

**3** Assemble the structure on the ground adjacent to the holes/foundation.

**4** Lift structure and place in hole or on foundation.

**5** String wires.

**6** Restore right-of-way and energize line.

**2**



**3**



**4**



**5**



**6**



- ⦿ **Letters or postcards mailed** (September 2012, October 2012, February 2013, April 2013, May 2013, June 2013, August 2013)
- ⦿ **Open house meetings** (October 2012 & February 2013)
- ⦿ **Newsletters mailed** (November 2012, June 2013, October 2013, January 2014)
- ⦿ **County meetings** (August 2012 & January 2013)
- ⦿ **Interagency meetings** (August 2012 & January 2013)
- ⦿ **Tribal Agency meetings** (October 2012, March 2013, May 2013, July 2013)
- ⦿ **SD PUC Public Input hearings** (October 2013)

- ⦿ Started contacting landowners on August 5, 2013
- ⦿ 100% of the SD parcel owners have been contacted to date
- ⦿ Nearly 60% of the SD project miles have options signed





## HOW TO STAY INFORMED and PROVIDE FEEDBACK:

- Visit our website at [www.BSSEtransmissionline.com](http://www.BSSEtransmissionline.com)
- Call our toll-free information line: **1-888-283-4678**
- **Join our mailing list** (online or at this meeting)
- Email us at: [info@BSSEtransmissionline.com](mailto:info@BSSEtransmissionline.com)
- **Make a comment** at this meeting or online at [www.BSSEtransmissionline.com](http://www.BSSEtransmissionline.com)





**BEFORE THE PUBLIC UTILITIES COMMISSION  
OF THE STATE OF SOUTH DAKOTA**

---

In the Matter of the Transmission Permit for the  
Big Stone South to Ellendale Project

EL13-028

**CERTIFICATE OF SERVICE**

---

I, Thomas J. Welk, do hereby certify that I am a member of the law firm of Boyce, Greenfield, Pashby & Welk, LLP, attorneys for Montana-Dakota Utilities Co. and Otter Tail Power Company and that on the 19<sup>th</sup> day of May 2014, a true and correct copy of **Public Hearing May 20, 2014 PowerPoint** was served via email to the following addresses listed:

Ms. Patricia Van Gerpen  
Executive Director  
South Dakota Public Utilities Commission  
500 E. Capitol Ave.  
Pierre, SD 57501  
[patty.vangerpen@state.sd.us](mailto:patty.vangerpen@state.sd.us)

Ms. Karen Cremer  
Staff Attorney  
South Dakota Public Utilities Commission  
500 E. Capitol Ave.  
Pierre, SD 57501  
[karen.cremer@state.sd.us](mailto:karen.cremer@state.sd.us)

Mr. Brian Rounds  
Staff Analyst  
South Dakota Public Utilities Commission  
500 E. Capitol Ave.  
Pierre, SD 57501  
[brian.rounds@state.sd.us](mailto:brian.rounds@state.sd.us)

Mr. Darren Kearney  
Staff Analyst  
South Dakota Public Utilities Commission  
500 E. Capitol Ave.  
Pierre, SD 57501  
[Darren.kearney@state.sd.us](mailto:Darren.kearney@state.sd.us)

Ms. Jennifer Smestad  
General Counsel  
Otter Tail Power Company  
215 S Cascade St.  
Fergus Falls, MN 56538-0496  
[jsmestad@ottertail.com](mailto:jsmestad@ottertail.com)

Mr. Daniel S. Kuntz  
Associate General Counsel  
MDU Resources Group, Inc.  
P.O. Box 5650  
1200 West Century Avenue  
Bismarck, ND 58506-5650  
[dan.kuntz@mduresources.com](mailto:dan.kuntz@mduresources.com)

Ms. Maxine Fischer  
Brown County Auditor  
25 Market St., Ste 1  
Aberdeen, SD 57401  
[maxine.fischer@browncounty.sd.gov](mailto:maxine.fischer@browncounty.sd.gov)

Ms. Sandra Raap  
Day County Auditor  
711 W. First St., Ste. 204  
Webster, SD 57274  
[dcaud@itctel.com](mailto:dcaud@itctel.com)

Ms. Karen Layher  
Grant County Auditor  
210 E. Fifth Ave.  
Milbank, SD 57252  
[karen.layher@state.sd.us](mailto:karen.layher@state.sd.us)

Mr. James R. McKane III  
41697 139<sup>th</sup> Street  
Andover, SD 57422  
[jamesmavis@hotmail.com](mailto:jamesmavis@hotmail.com)

Mr. Randall Schuring  
Vice President  
Schuring Farms, Inc.  
507 S. Second Street  
Andover, SD 57422  
[schuringrl@hotmail.com](mailto:schuringrl@hotmail.com)

Mr. Kevin Anderson  
100 S. First  
Andover, SD 57422  
[kanderson@nvc.net](mailto:kanderson@nvc.net)

Mr. Bob Pesall - Representing: Gerald Pesall  
Pesall Law Firm  
PO Box 23  
Flandreau, SD 57028  
[bob@pesall.com](mailto:bob@pesall.com)

Mr. Clark T. Olson  
13926 417<sup>th</sup> Avenue  
Andover, SD 57422  
[timolson@nvc.net](mailto:timolson@nvc.net)

Mr. Bradley R. Morehouse  
14026 416<sup>th</sup> Avenue  
Andover, SD 57422  
[mhouse@nvc.net](mailto:mhouse@nvc.net)



Thomas J. Welk  
Jason R. Sutton  
BOYCE, GREENFIELD, PASHBY & WELK, LLP  
P.O. Box 5015  
Sioux Falls, SD 57117-5015  
(605) 336-2424

Jennifer O. Smestad  
General Counsel  
Otter Tail Power Company  
215 S Cascade St.  
Fergus Falls, MN 56538-0496  
(218) 739-8892

Daniel S. Kuntz  
Associate General Counsel  
MDU Resources Group, Inc.  
P.O. Box 5650  
1200 West Century Avenue  
Bismarck, ND 58506-5650  
(701) 530-1016