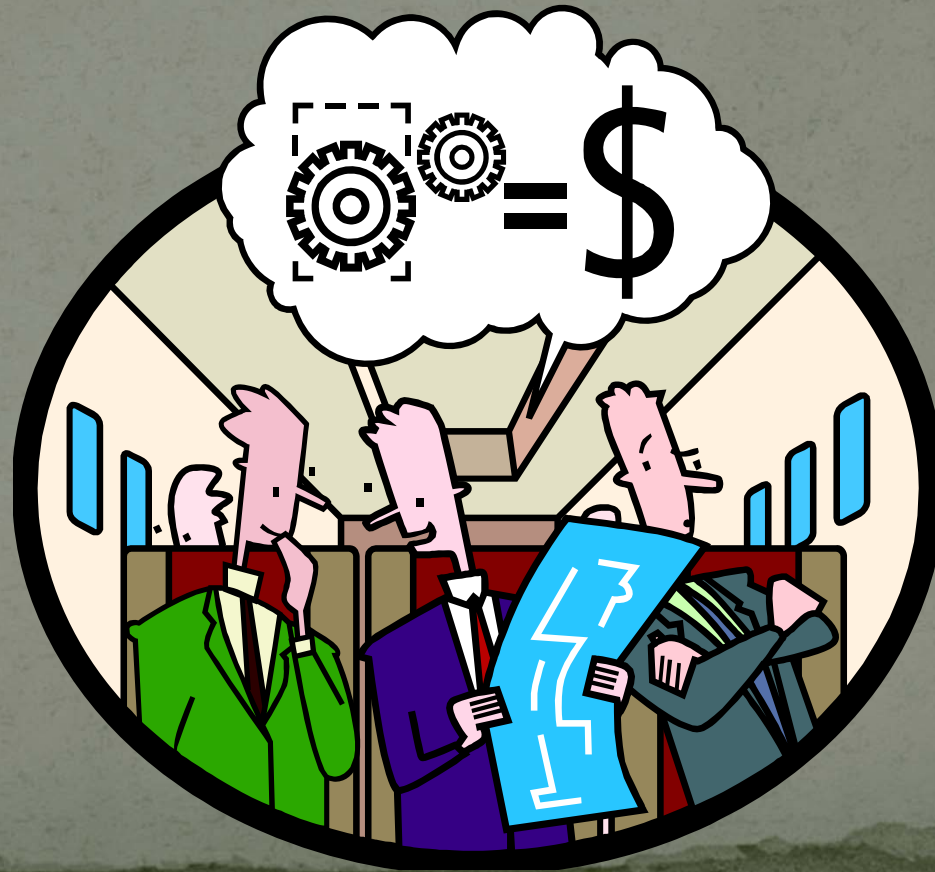


49 CFR Part 192

How do I know what to do??



Regulation Construction

⊕ Part

⊕ Subpart

⊕ Section

⊕ Paragraph

⊕ Subparagraph



Gathering Line

A pipeline that transports gas from a current production facility to a transmission line or main.



Transmission Line

- ⊕ Transports gas from a gathering line or a storage facility to a distribution center, storage facility, or Large Volume Customer that is not downstream from a distribution center;
- ⊕ Operates at a hoop stress of 20% or more of SMYS; or
- ⊕ Within a storage field

Distribution Line

A Pipeline other than a Gathering Line or Transmission Line



§192.13 General

- ⊕ **Retroactive Subparts**

- ⊕ **Effective Dates**

- ⊕ **O&M Plans - Develop and Follow**

(a) No person may operate a segment of pipeline that is readied for service listed in the first column that is readied for service after the date in the second column, unless:



Pipeline	Date
Offshore gathering line	July 31, 1977
Regulated onshore gathering line...	March 15 2007
All other pipelines	March 12, 1971



(1) The pipeline has been **designed, installed, constructed; initially inspected, and initially tested** in accordance with this part;

Other Subparts

- ⊗ "B" - Materials (design)
- ⊗ "C" – Pipe Design (design)
- ⊗ "D" – Design of Pipeline Components (design)
- ⊗ "E" - Welding of Steel in Pipelines (install, construct)
- ⊗ "F" – Joining of Materials Other Than by Welding (install, construct)

Other Subparts

- ⊗ "G" – General Construction for Transmission Lines and Mains (install)
- ⊗ "H" – Customer Meters, Service Regulators, and Service Lines (install)
- ⊗ "I" – Requirements for Corrosion Control (?)
- ⊗ "J" – Test Requirements (test)

Other Subparts

- ⊗ “K” – Upgrading (?)
- ⊗ “L” – Operations (?)
- ⊗ “M” – Maintenance (?)
- ⊗ “N” – Qualification of Pipeline Personnel (?)
- ⊗ “O” – Pipeline Integrity Management (?)
- ⊗ “P” – Integrity Management Program for Gas
Distribution Pipelines (?)

Retroactive by process of elimination

⊗ A

⊗ M

⊗ I

⊗ L

⊗ K

⊗ N

⊗ O

⊗ P

MAOPLINK

