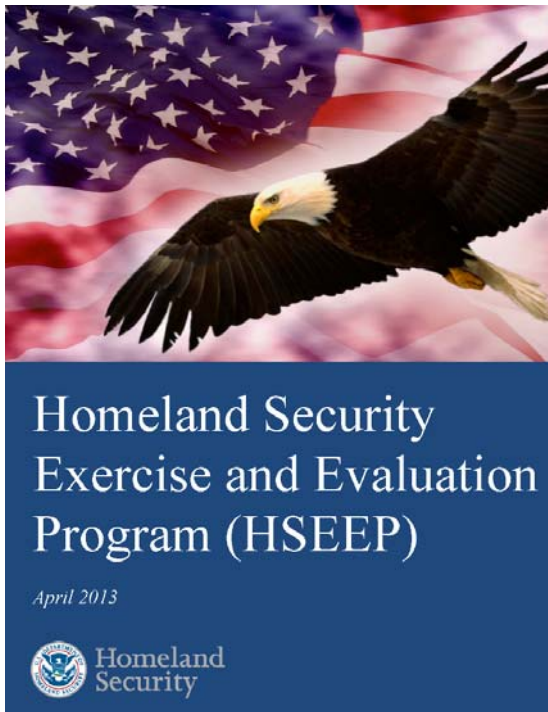


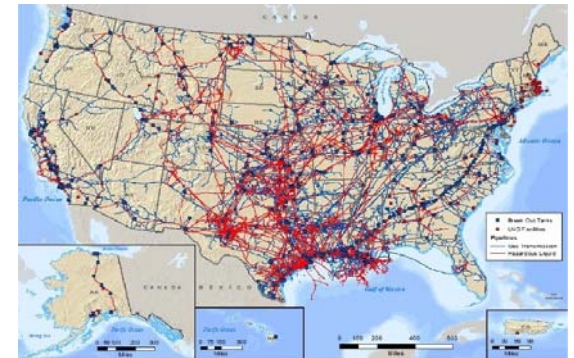
Conducting Emergency Drills



NATIONAL EXERCISE PROGRAM



March 18, 2011



Hazard Mitigation Planning:

Practices for Land Use Planning
and Development near Pipelines

2015



U.S. Department of Transportation
Pipeline and Hazardous Materials
Safety Administration

2015 South Dakota/North Dakota Pipeline Safety Operator Training
April 16, 2015
Sioux Falls, South Dakota

Conducting Emergency Drills, advantages of conducting pipeline incident exercises with local governments.

Robert W. Hill
Emergency Manager
Brookings County, South Dakota

WHO/ WHERE: Brookings County, SD

Population: 31,965 persons, 76,000 cattle

Pipeline Operators

- Northern Natural Gas Company
- Basin Electric Power Cooperative



© 2015 Google

Google earth

N Samarake Ave

5





What is HSEEP?

The Homeland Security Exercise and Evaluation Program (HSEEP)

<http://hseep.dhs.gov>

Conduct an annual Training and Exercise Planning Workshop (TEPW), and maintain a Multiyear Training and Exercise Plan (TEP).

Plan and conduct exercises in accordance with the guidelines set forth in HSEEP policy.

Document Title	Exercise Type	Distribution Audience
Situation Manual (SitMan)	Seminar (Optional), Workshop (Optional), TTX, Game	All Participants
Facilitator Guide	Seminar (Optional), Workshop (Optional), TTX, Game	Facilitators
Multimedia Presentation	Seminar (Optional), Workshop (Optional), TTX, Game	All Participants
Exercise Plan (ExPlan)	Drill, FE, FSE	Players and Observers
Controller and Evaluator (C/E) Handbook	Drill, FE, FSE	Controllers and Evaluators
Master Scenario Events List (MSEL)	Drill, FE, FSE, Complex TTX (Optional), Game (Optional)	Controllers, Evaluators, and Simulators
Extent of Play Agreement (XPA)	FE, FSE	Exercise Planning Team
Exercise Evaluation Guides (EEGs)	TTX, Game, Drill, FE, FSE	Evaluators
Participant Feedback Form	All Exercises	All Participants

Table 3.2: Exercise Design and Development Documents

Develop and submit a properly formatted After Action Report/Improvement Plan (AAR/IP).

**Track and implement corrective actions
identified in the AAR/IP.**

Types of Exercises

Discussion-Based

Operations-Based

Seminar

Workshop

Tabletop Exercise

Game

Drill

Functional Exercise

Full-Scale Exercise

October 15, 2013

Full-Scale Exercise



Things to remember

Exercise tips

Work as a team

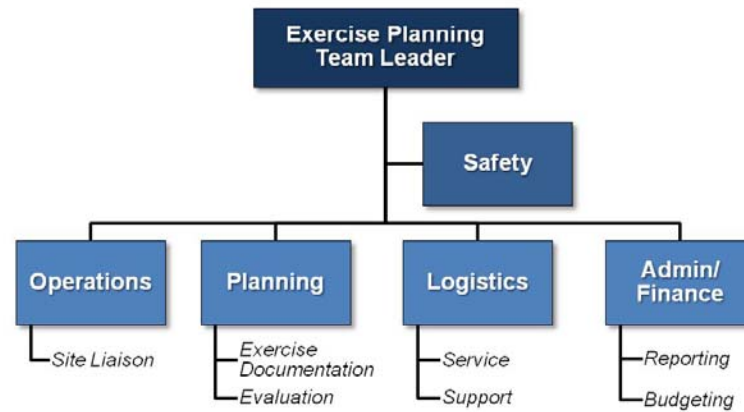


Figure 3.1: Sample Exercise Planning Team

Worst Case Scenario?

Use realistic scenarios

Include your local operators

And your Corporate Safety Staff


Include landowners

Plan to provide a meal

Security issues




**Partnering to Further Enhance Pipeline Safety
In Communities
Through Risk-Informed Land Use Planning
Final Report of Recommended Practices
November 2010**



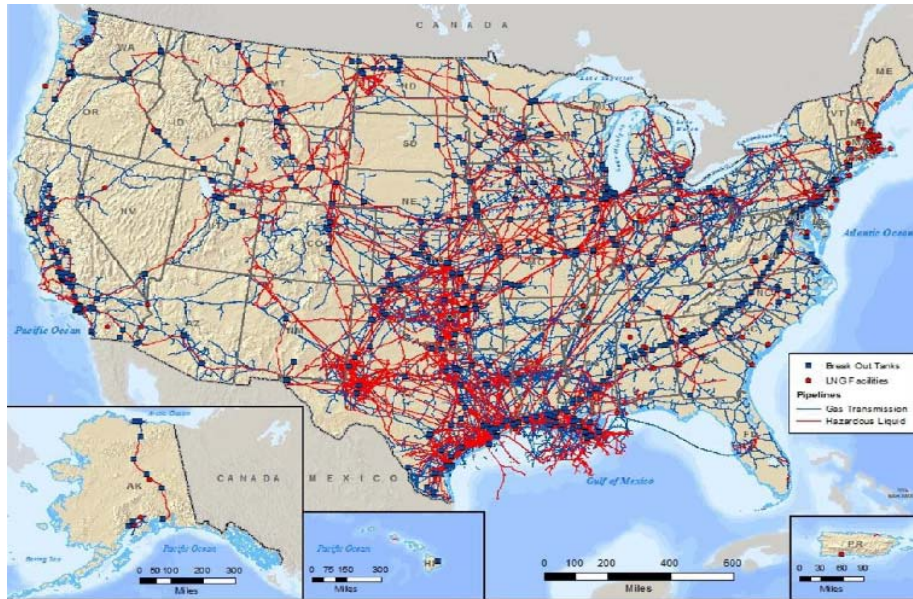
FEMA Mitigation and Insurance Strategic Plan

2012–2014

FEMA P-857/ September 2011



FEMA



Collaboration

Hazard Mitigation Planning:

Practices for Land Use Planning
and Development near Pipelines

2015



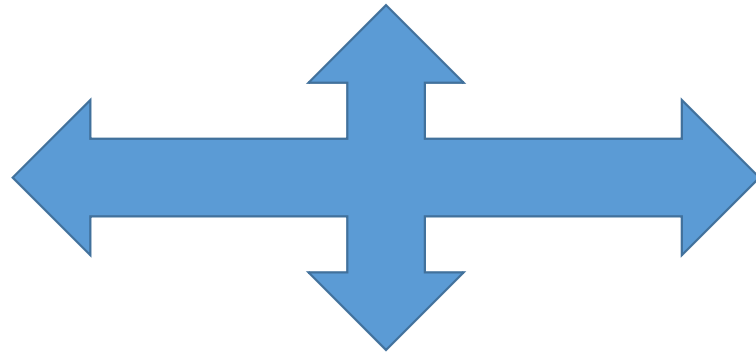
U.S. Department of Transportation
**Pipeline and Hazardous Materials
Safety Administration**

All hazards approach

Communication



Communication



Pipelines and Informed Planning Alliance (PIPA)

Baseline (BL) Recommended Practices

New Development (ND) Recommended Practices

BL04 and BL05

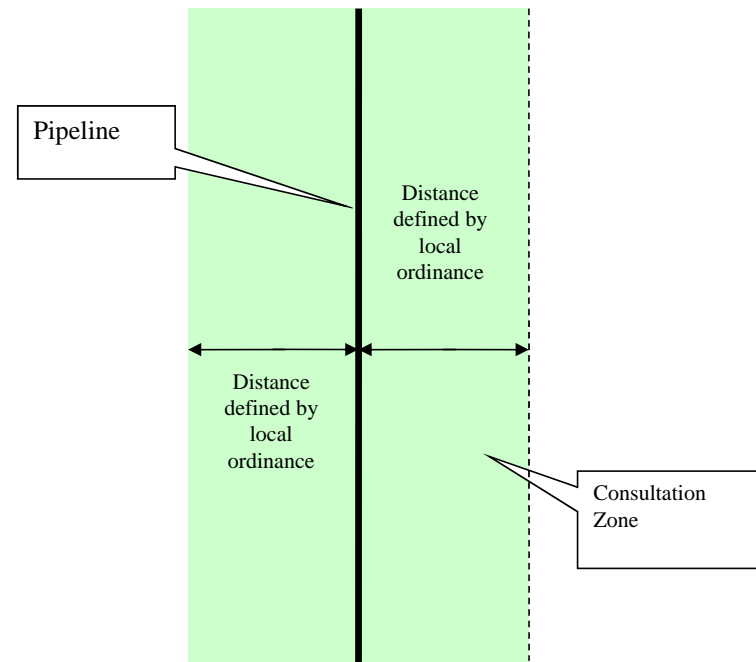
- **BL04: Adopt Transmission Pipeline Consultation Zone Ordinance**
- **BL05: Consultation Zone** – *Reference Recommended Practice BL05.* An area extending from each side of a transmission pipeline, the distance of which should be defined by local governments, to describe when a property developer/owner, who is planning new property development in the vicinity of an existing transmission pipeline, should initiate a dialogue with a transmission pipeline operator.



Consultation Zone

Absent site-specific information

- 660-1000 feet Natural Gas Pipelines
- 1000-1500 Hazardous Liquid Pipelines





Thank You

- Robert W. Hill
- Brookings County
- County Development Department Director
- Emergency Manager
- www.brookingscountysd.gov
- rhill@brookingscountysd.gov