



August 26, 2010

Brian P. Rounds
Staff Analyst
SD Public Utilities Commission
500 E. Capital Avenue
Pierre, SD 57501-5070

RE: Notice of Planned Start of Construction for 20 MW Strandburg Wind Farm

Dear Mr. Rounds:

In accordance with South Dakota Codified Law 49-41B-25.1, Harvest Wind LLC is hereby notifying the SD Public Utilities Commission of the planned start of construction for our 20 MW Strandburg Wind Farm located in Troy Township, Grant County, South Dakota. The project is planned to consist of eight (8) GE 2.5xle wind turbine generators with an 85-meter hub height and 103-meter rotor diameter.

The project will be interconnected to East River Electric Cooperative's 69-kV distribution system. Proper relays, switching, and protective devices will be installed to maintain operability standards of EREPC, WAPA, and SDPUC as well as local, state, and federal codes. Preliminary plans of our substation layout plan and electrical one line diagrams are attached which illustrate the planned method of interconnection.

The estimated construction start date is November 1, 2010 to begin trenching underground 34.5 kV collector lines and to install turbine access roads and turbine foundations prior to winter conditions. The turbines and substation gear are planned for delivery to the site in April or May of 2011 at which time the project would be interconnected to the grid in order to energize turbines as they are erected. The construction completion date (Commercial Operation Date) is estimated to be June 15, 2011.

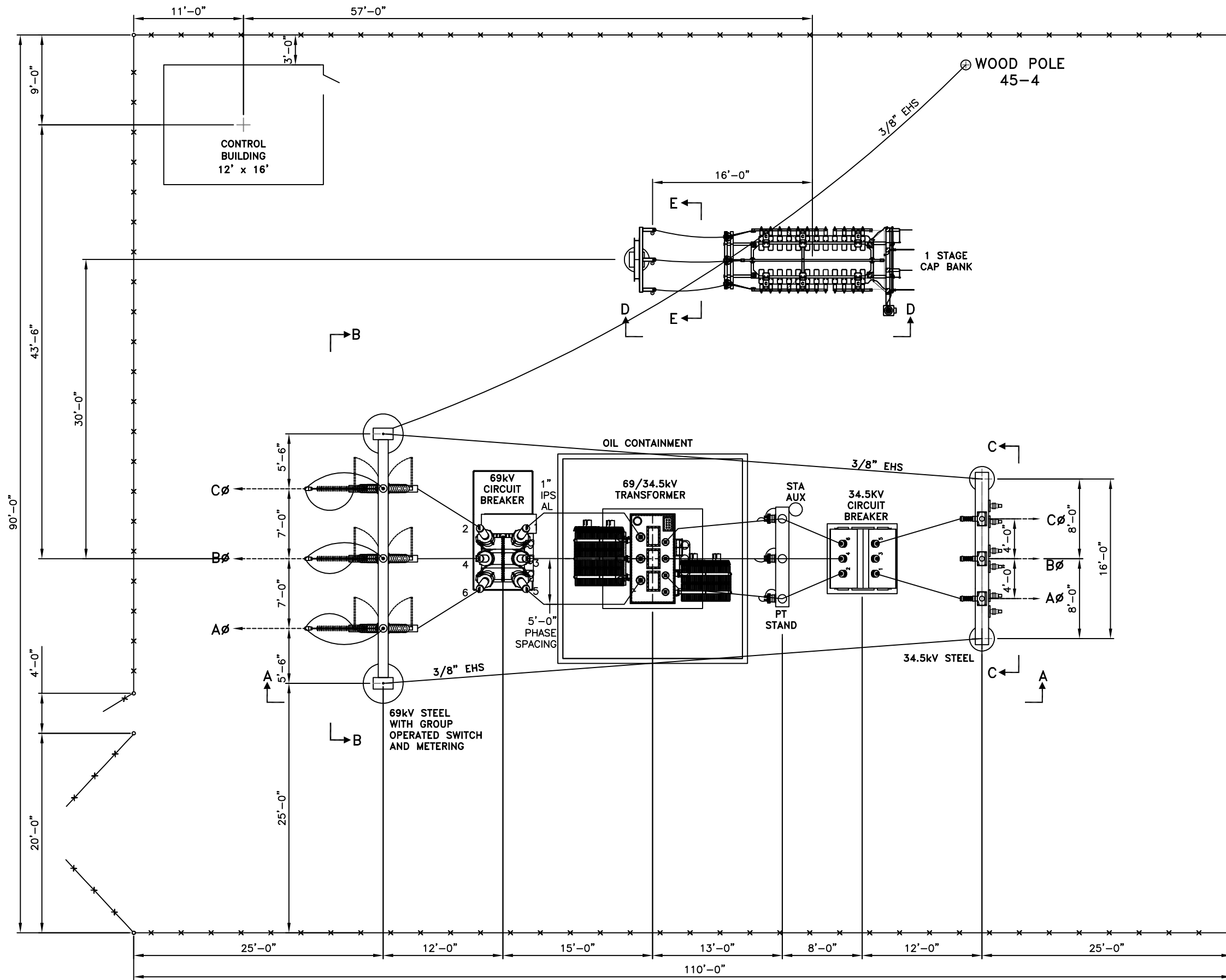
Sincerely,

Ken Peterson
CEO & Chairman of the Board
HARVEST WIND LLC

cc: Harvest Wind Board of Managers
Jeff Rud – East River Electric Power Cooperative
Krista Atyeo-Gortmaker - Grant County Planning & Zoning Officer

C:\Users\harvestwind\Permits_Statutes_Ordinances\SD PUC - Notice of Planned Construction.docx
612.840.4574
612.382.5650
harvestwindsd@gmail.com

Harvest Wind, LLC
15706 475th Avenue
Milbank, SD 57252



PRELIMINARY

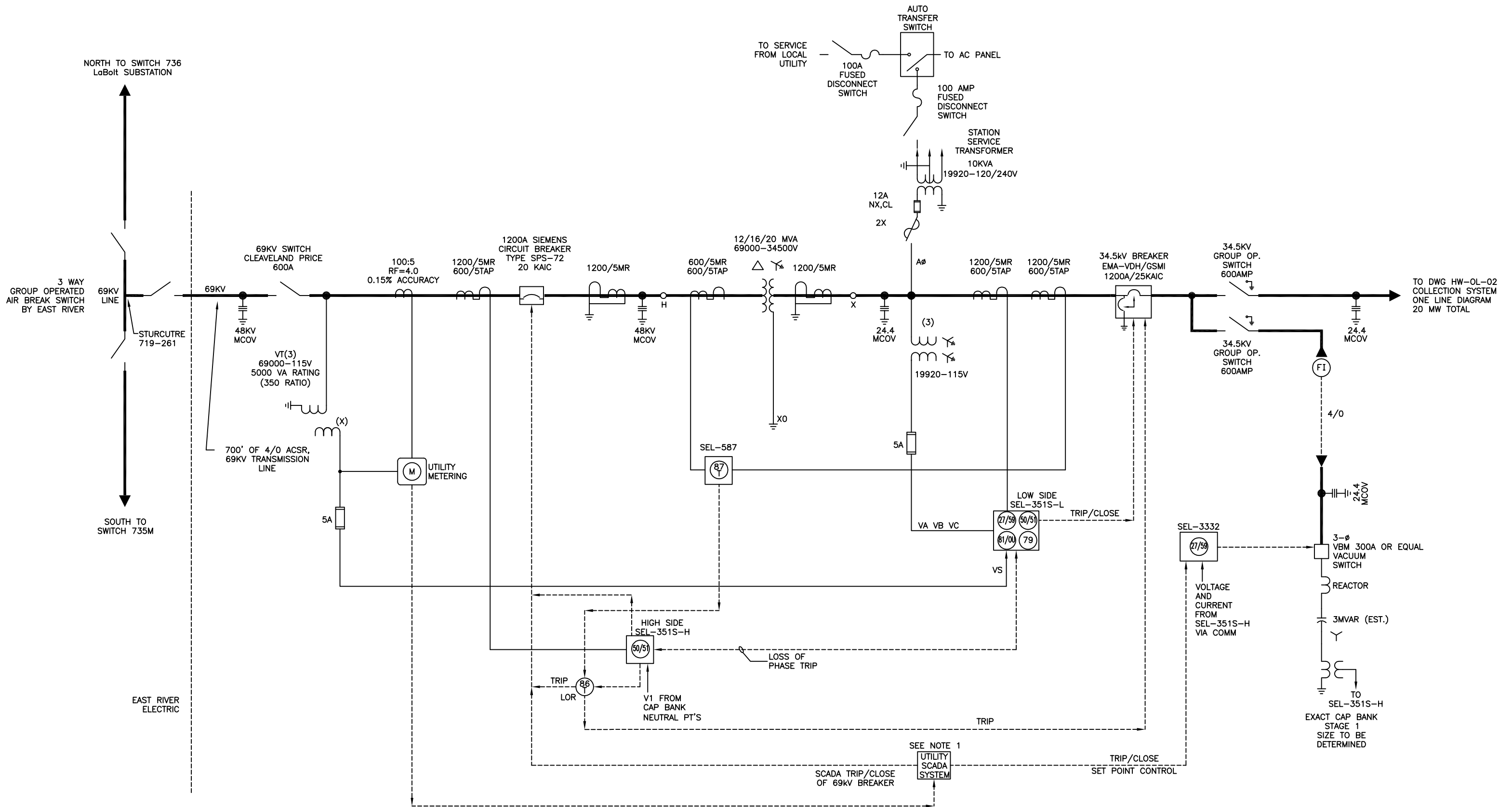
LEGEND

1. INDICATES ITEM # ON ELECTRICAL MATERIAL LIST ON HW-EL-04.

SCALE: 3/16"=1'-0"

THIS LINE IS ONE INCH WHEN DRAWING IS FULL SIZE, IF NOT ONE INCH, SCALE ACCORDINGLY.

REV.	DATE	DRAWN	DESCRIPTION	WORK ORDER	CHKD	APPD	DATE
A	03/02/10	MAK	PRELIMINARY ISSUE				
CEG CONSULTING ENGINEERS GROUP FARMINGTON MINNESOTA							
HARVEST WIND SUBSTATION ELECTRICAL LAYOUT PLAN							
I HEREBY CERTIFY THAT THIS PLAN, SPECIFICATION, OR REPORT WAS PREPARED BY ME OR UNDER MY DIRECT SUPERVISION AND THAT I AM A duly LICENSED PROFESSIONAL ENGINEER UNDER THE LAWS OF THE STATE OF SOUTH DAKOTA.							
NAME: PAUL MALAMEN, JR.				CHECKED: _____			
DATE: _____ REGISTER NO. 6205				DATE: _____			
				SCALE: AS SHOWN			
				W.O. NO. _____			
				MAP NO. _____			
				DWG. NO. HW-EL-01RA			



PROJECT LOCATED IN GRANT COUNTY, SOUTH DAKOTA. MADISON TOWNSHIP.
 SUBSTATION IS ON THE NORTHWEST CORNER OF 160TH STREET AND 478TH AVENUE

- NOTES:**
- UTILITY SCADA INTERFACE TO BE DESIGNED BY CEG & EAST RIVER ELECTRIC.
 - CAPACITOR BANK SIZED PER UTILITY REQUIREMENTS.

PRELIMINARY

REV.	DATE	DRAWN	DESCRIPTION	WORK ORDER	CHKD	APPD	DATE
A	03/02/10	MAK	PRELIMINARY ISSUE				

CEG CONSULTING ENGINEERS GROUP
 FARMINGTON, MINNESOTA

HARVEST WIND PROJECT
 SUBSTATION ONE LINE DIAGRAM

STATE OF SOUTH DAKOTA
 PAUL MALAMEN, JR.
 REGISTERED ELECTRICAL ENGINEER NO. 6205

CHECKED	SCALE	NONE
DATE	W.O. NO.	
DRAWN	MAP NO.	
DATE	DWG. NO.	HW-OL-01RA